



## CARDIAC ARREST-ASYSTOLE/PEA

### BLS CARE

Follow Routine Medical Care Protocol (M-3).

### Begin CPR.

Consider and treat potential causes of the patient's condition.

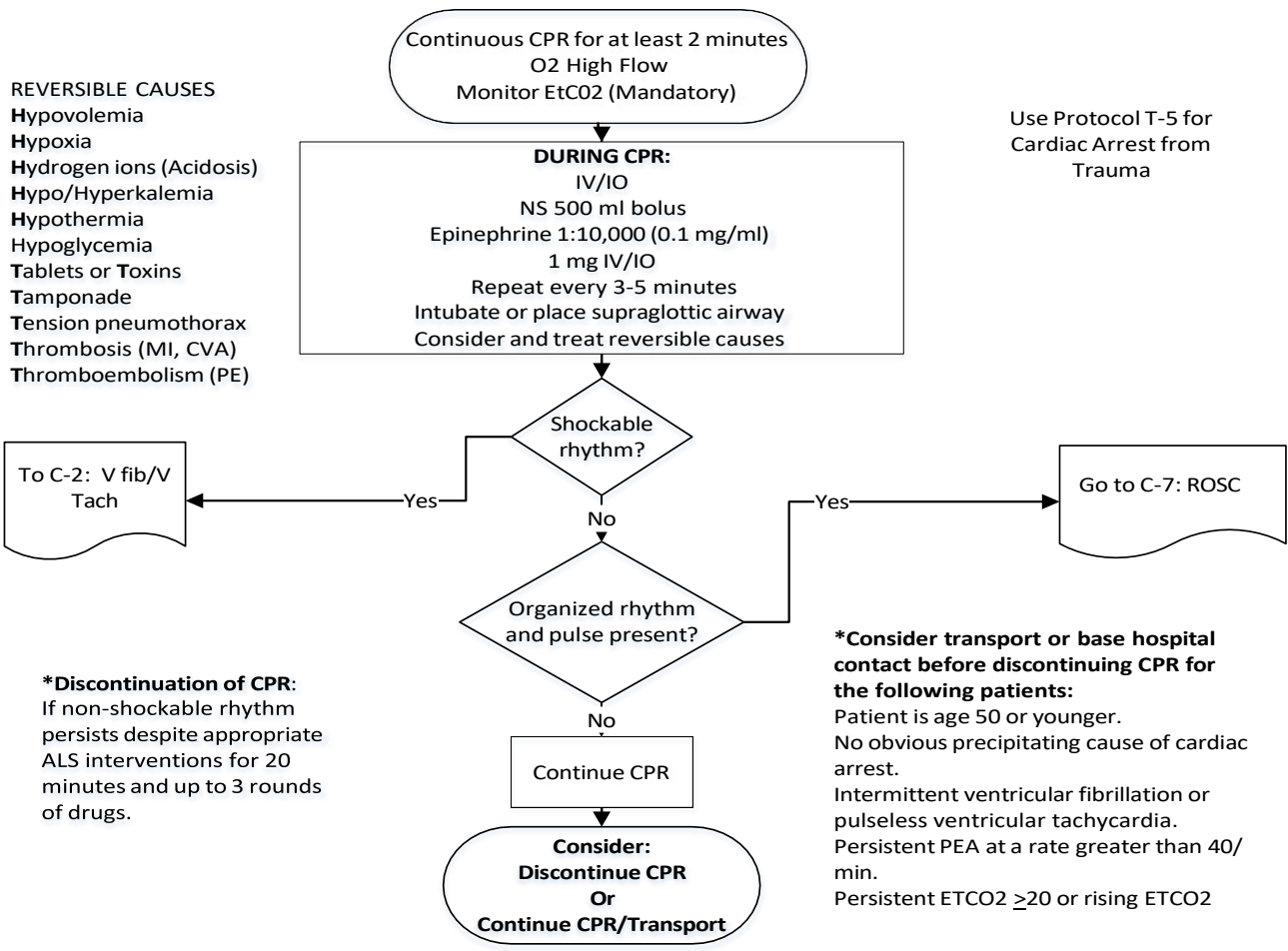
Apply AED immediately when available. Continue CPR during application of the AED pads.

Continue CPR for two minutes.

AED Rhythm check and Assess for spontaneous circulation.

Continue resuscitation efforts if no return of spontaneous circulation.

### ALS CARE



**Note:** Patients in cardiac arrest due to hypothermia shall be transported.