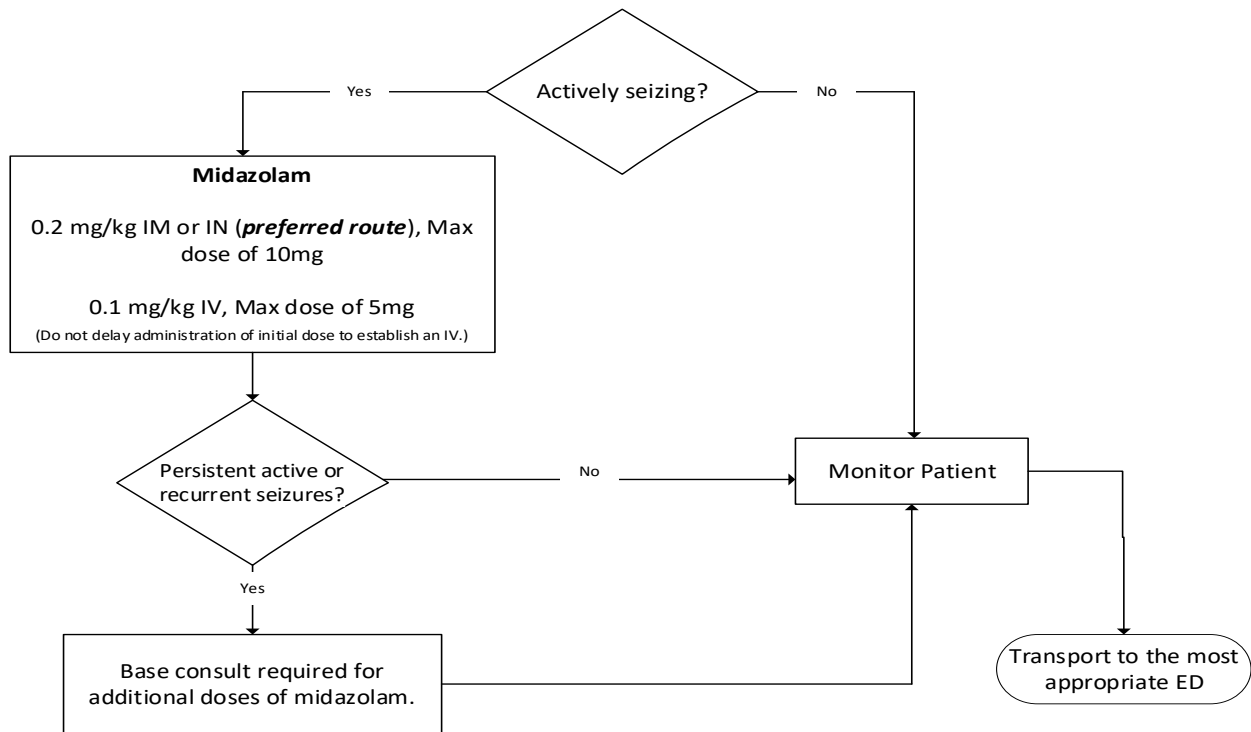




## SEIZURE - PEDIATRIC

- BLS/ALS Care**
- Routine Medical Care
  - Protect from injury
  - Blood glucose check to rule-out seizures secondary to hypoglycemia (See Policy **NP-2** for hypoglycemia treatment.)
  - Cooling measures if signs of febrile seizure are present. Cooling measures include: removing clothing and other coverings, cooling with damp towels, and fanning to speed evaporation. Do not cool to the point of shivering.
  - **Midazolam** should be administered as soon as possible for active seizure.



- Notes:**
- Blood glucose should be checked after initial midazolam dose if not checked previously.
  - Routine placement of a peripheral IV is recommended after the initial IM or IN dose of midazolam has been administered.