

DATE	BY	DESCRIPTION
12/14/2017	K. K. ZIEGLER	REVISED
12/14/2017	K. K. ZIEGLER	REVISED
12/14/2017	K. K. ZIEGLER	REVISED

# SITE PLAN

## SOUTHERN BEACH PILOT CHANNEL



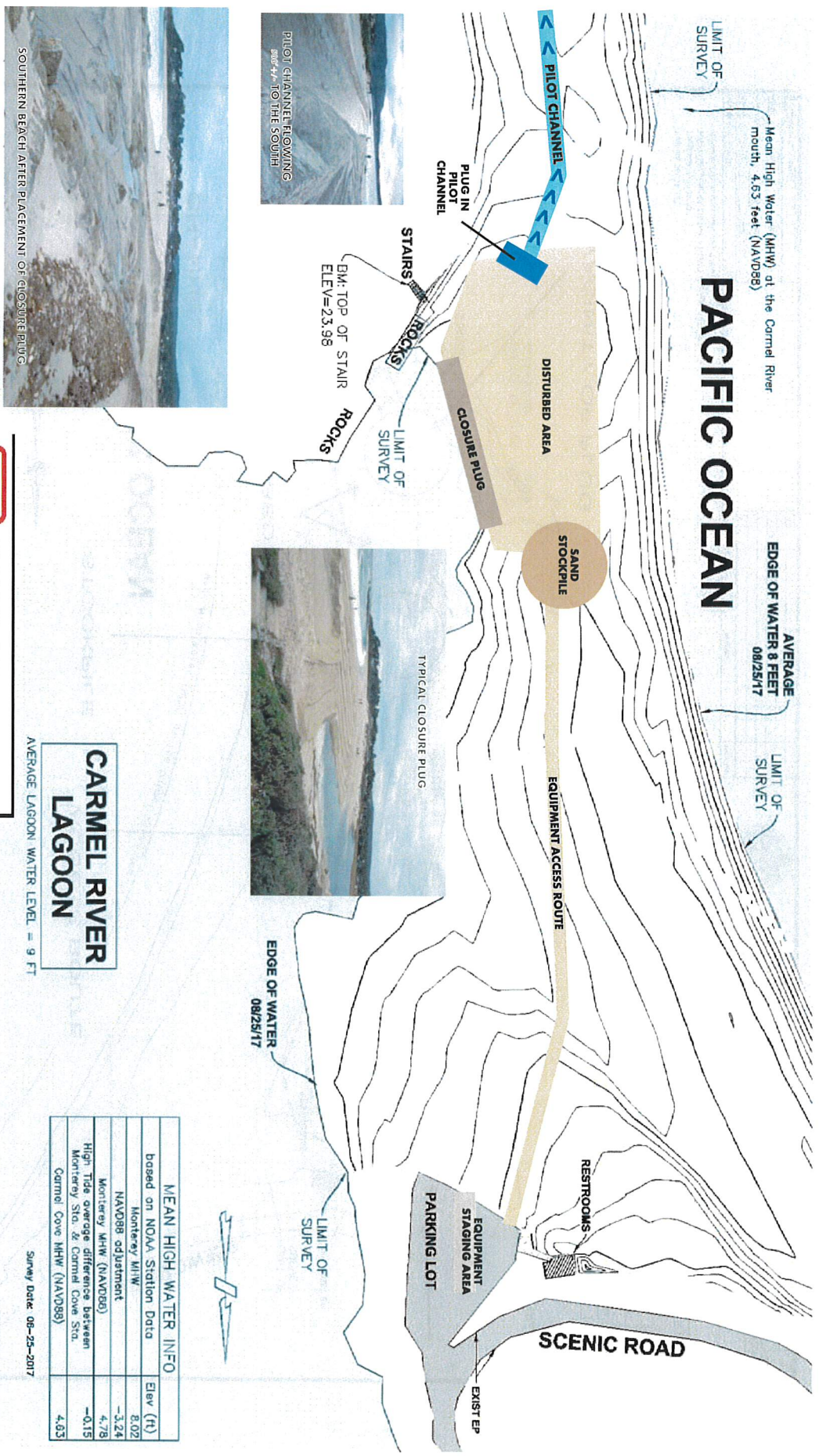
U.S. Army Corps of Engineers  
Monterey District

USACE File # 1996-190895  
Carmel Lagoon winter grading options  
Monterey County, California  
12/14/2017  
6 Sheets



COUNTY OF MONTEREY  
RESOURCE MANAGEMENT AGENCY  
OFFICE OF THE COUNTY SURVEYOR  
140 WEST ALABAMA STREET, 3RD FLOOR  
MONTEREY, CALIFORNIA 93940  
(408) 734-6600 FAX (408) 734-6600

CARMEL RIVER LAGOON	
SAND BAR ELEVATIONS - AUGUST 2017	
DATE	8/26/2017
SCALE	GRAPHIC 1"=100'
PROJECT NO.	CRSB EL-82.14
SHEET	1 OF 6



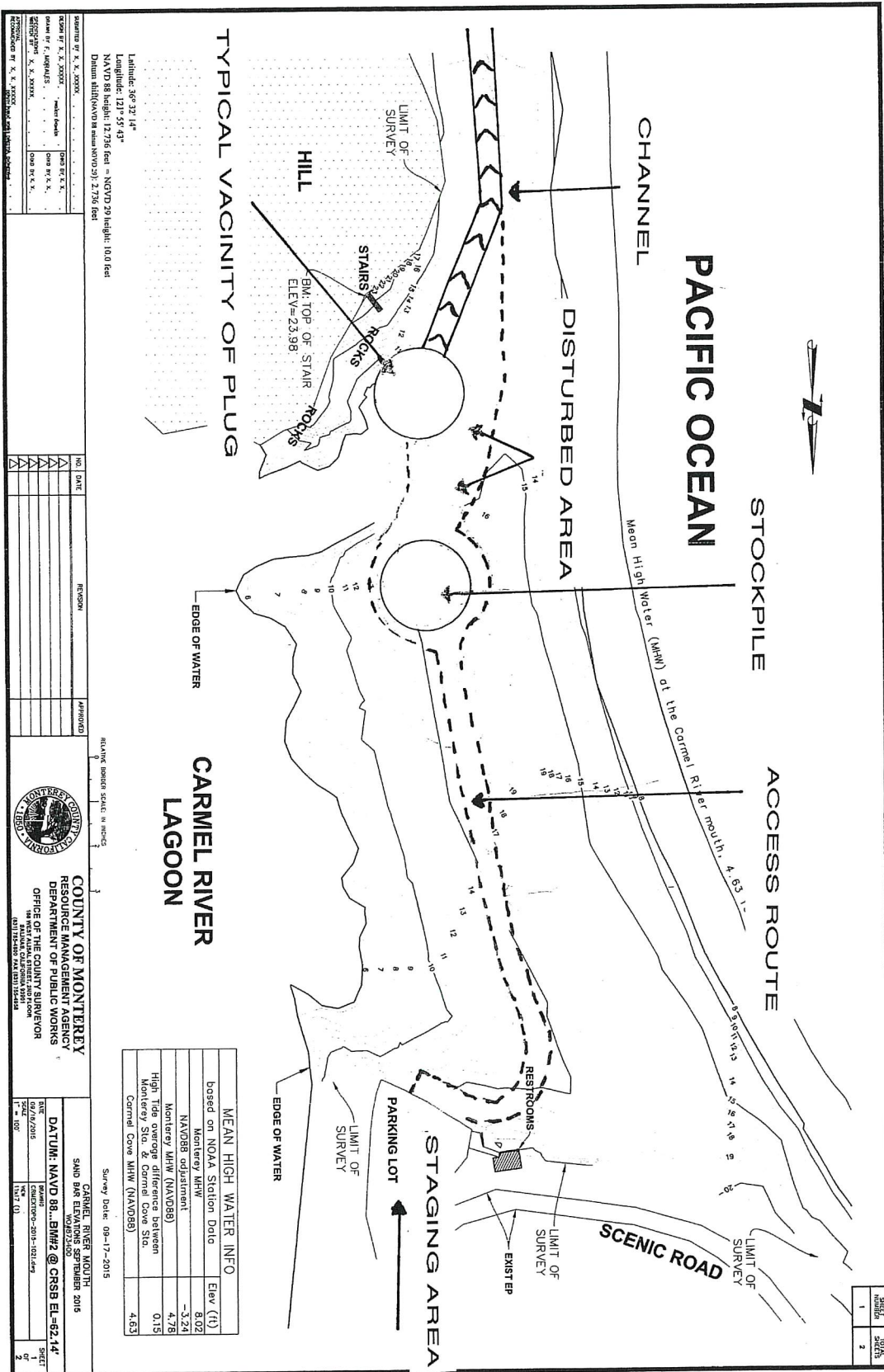
### CARMEL RIVER LAGOON

AVERAGE LAGOON WATER LEVEL = 9 FT

MEAN HIGH WATER INFO	
based on NOAA Station Data	Elev (ft)
Monterey MHW	8.02
NAVD88 adjustment	-3.24
Monterey MHW (NAVD88)	4.78
High Tide average difference between Monterey Sta. & Carmel Cove Sta.	-0.15
Carmel Cove MHW (NAVD88)	4.63

Survey Date: 08-25-2017

DATE	12/14/2017
BY	K. K. ZIEGLER



TYPICAL VACINITY OF PLUG

Latitude: 36° 32' 14"  
 Longitude: 121° 53' 43"  
 NAVD 88 height: 12.736 feet = NGVD 29 height: 10.0 feet  
 Datum shift (NGVD to datum NAVD 88): 2.736 feet

MEAN HIGH WATER INFO	
based on NOAA Station Data	Elev (ft)
Monterey MHW	8.02
NAVD88 adjustment	-3.24
Monterey MHW (NAVD88)	4.78
High Tide average difference between Monterey Sta. & Carmel Cove Sta.	0.15
Carmel Cove MHW (NAVD88)	4.63

Survey Date: 09-17-2015

Drawn by: K. K. JENSEN  
 Checked by: F. JENSEN  
 Date: 10/25/2015

Scale of: K. K. JENSEN  
 Date: 10/25/2015

NO.	DATE	REVISION	APPROVED



COUNTY OF MONTEREY  
 RESOURCE MANAGEMENT AGENCY  
 DEPARTMENT OF PUBLIC WORKS  
 OFFICE OF THE COUNTY SURVEYOR  
 100 WEST MAIN STREET, 10TH FLOOR  
 MONTEREY, CALIFORNIA 93940  
 (415) 755-3000 FAX (415) 755-3001

CARMEL RIVER LAGOON SAND BAR ELEVATIONS SEPTEMBER 2015			
DATE	09/17/15	SECT	2
SCALE	AS SHOWN	OF	2
PROJECT	CARMEL RIVER LAGOON SAND BAR ELEVATIONS SEPTEMBER 2015		
DATE	09/17/15	SCALE	AS SHOWN

DATE: NAVD 88, BM#2 @ CRSB EL=62.14'

NO.	DATE
1	10/25/2015
2	



# PACIFIC OCEAN

CHANNEL  
E.L. 12.74

SAND  
SLOPE  
AREA

OUTLET CHANNEL

Plug  
E.L. 13.74

STAIRS

← 25' →

Channel length = 150 LF

CARMEL RIVER  
LAGOON

SAND BAR Management Plan 12-11-14

SCENIC ROAD

EDGE OF WATER

EDGE OF WATER

PARKING LOT

EXIST EP

RESTROOMS

SHEET	
1	2
SOUTH	
1	2

DESIGNED BY	K. K. JOHNSON
CHECKED BY	K. K. JOHNSON
DRAWN BY	K. K. JOHNSON
DATE	09/25/2014
SCALE	AS SHOWN

NO.	DATE	REVISION	APPROVED



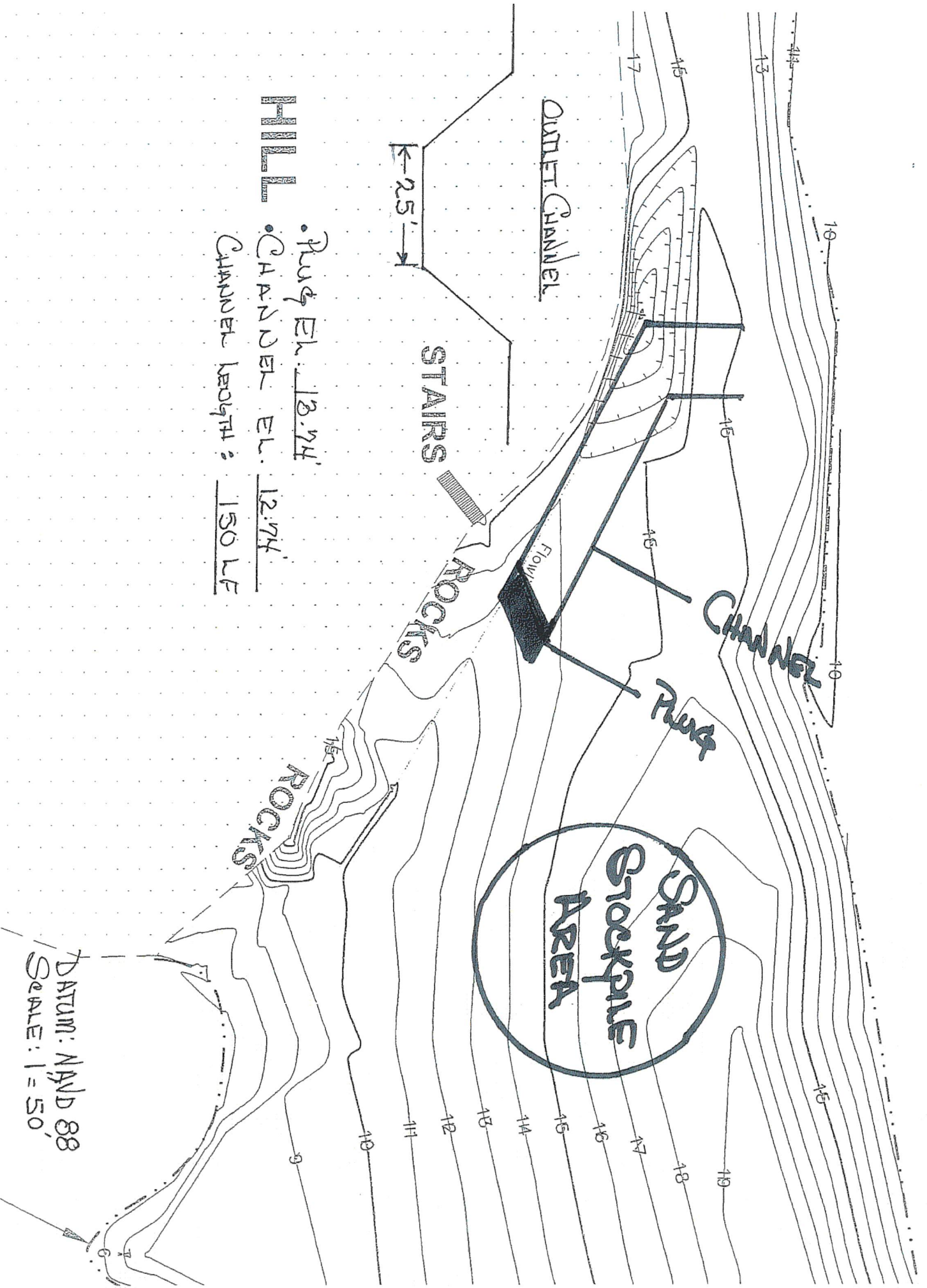
COUNTY OF MONTEREY  
RESOURCE MANAGEMENT AGENCY  
DEPARTMENT OF PUBLIC WORKS  
OFFICE OF THE COUNTY SUPERVISOR  
144 WEST ALBANY STREET, SUITE 201  
MONTEREY, CALIFORNIA 93940  
(408) 255-2222

CARMEL RIVER MOUTH SAND BAR ELEVATIONS SPRING 2014	
PROJECT NO. 09271400	
DATUM: NAVD 88... BMA2 @ CRSB EL=82.74'	
DATE	10/21/2014
SCALE	1" = 100'
PROJECT	CRSB
SHEET	1 OF 2

Survey Date: 09-25-2014

GARRET RIVER SADDLEBAR MANAGEMENT PLAN

12-11-14



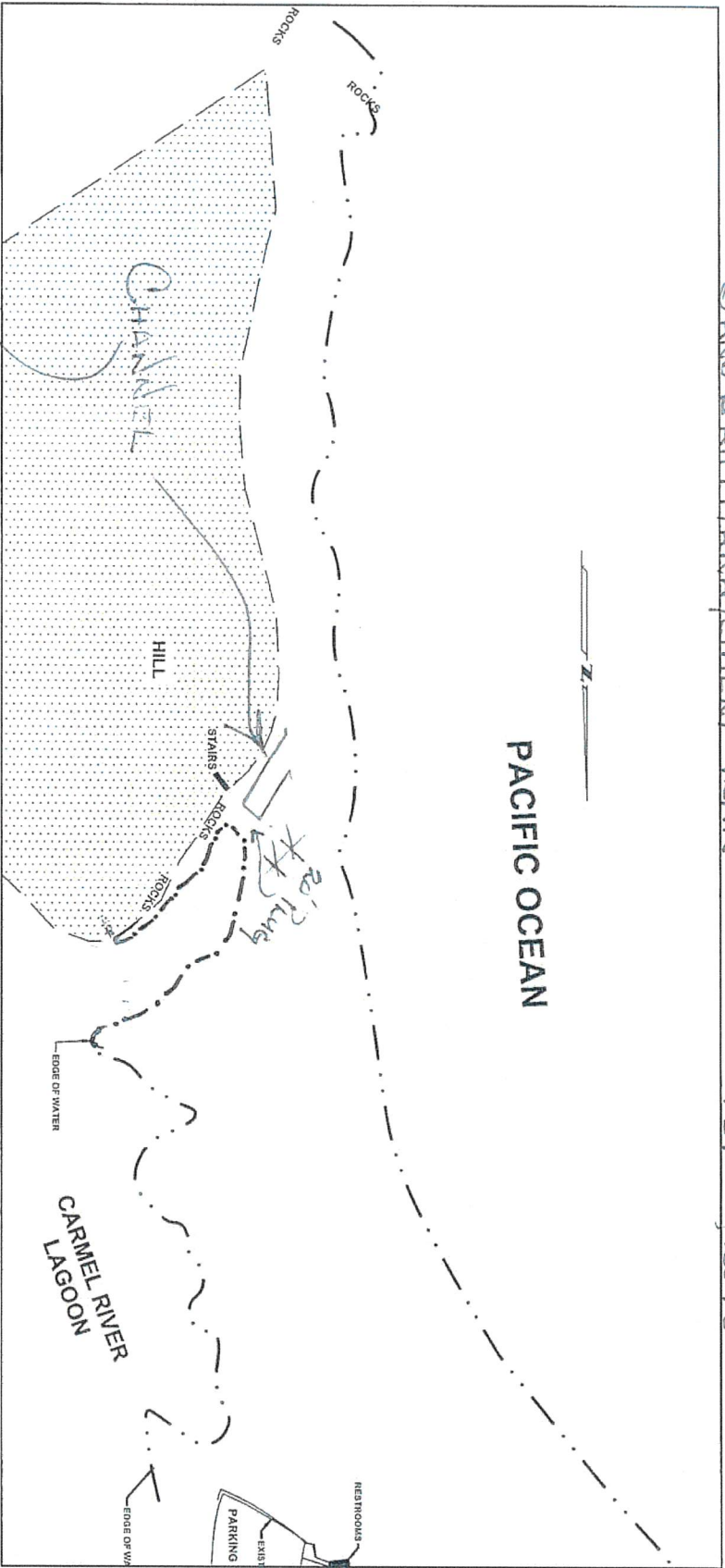
HILL  
• Ridge EL. 13.74'  
• CHANNEL EL. 12.74'  
CHANNEL LENGTH: 150 LF

DATUM: NAVD 88  
SCALE: 1" = 50'

# SAND BAR MANAGEMENT PLAN

FEB. 6, 2015

NO.	REV.



8' → EL.10.0 EL.10.5 40'-60' LONG X 6" DEEP = APPROX. 8 CY EXCAV.

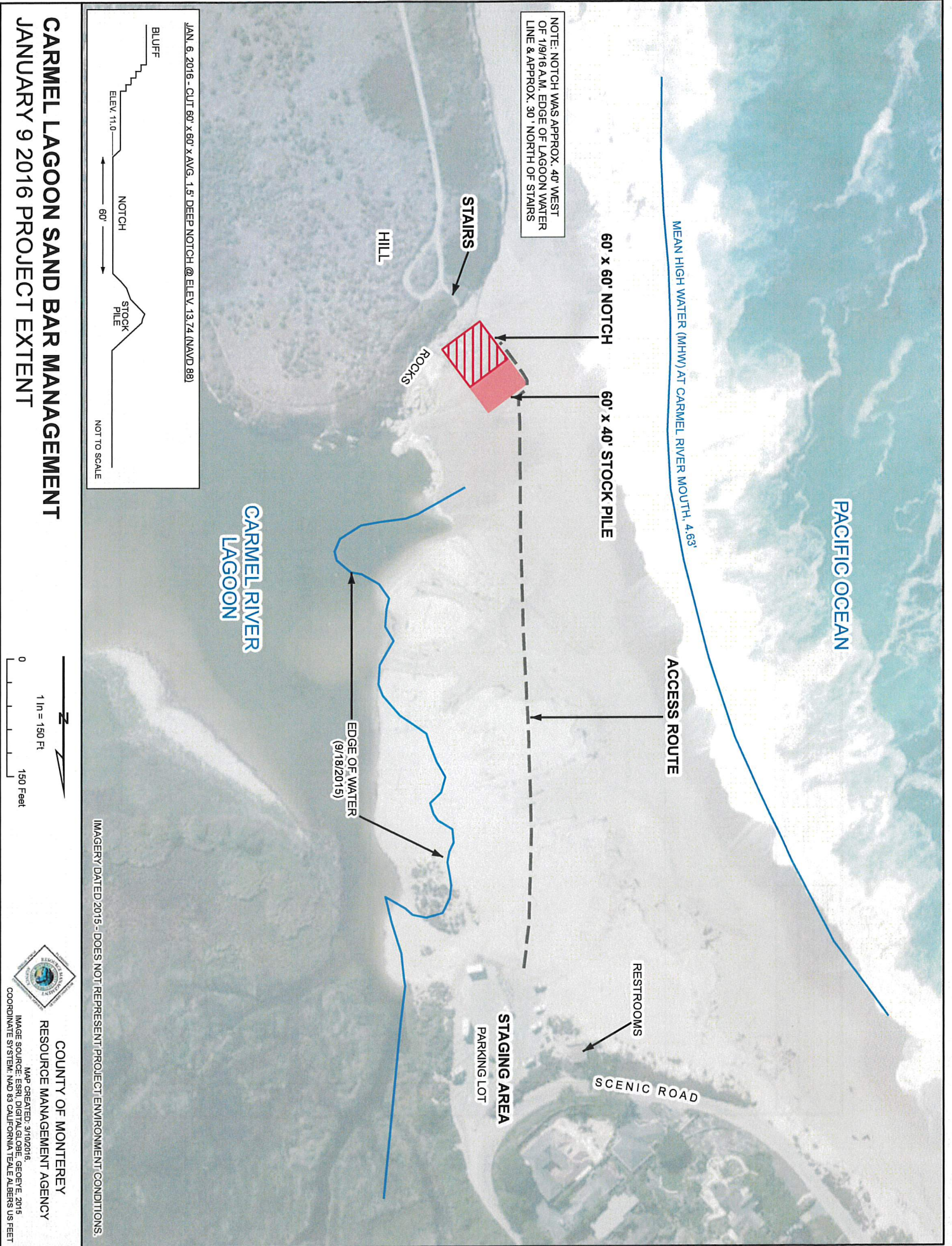
DATE OF SURVEY	BY	FOR
08/17/2011	J. J. J.	
08/17/2011	J. J. J.	
08/17/2011	J. J. J.	
08/17/2011	J. J. J.	

NO.	DATE	REVISION



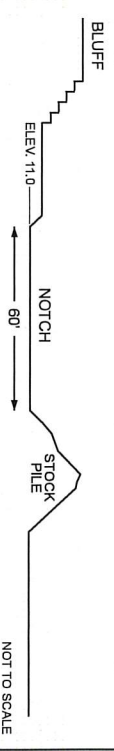
COUNTY OF MONTEREY  
 RESOURCE MANAGEMENT AGENCY  
 DEPARTMENT OF PUBLIC WORKS  
 OFFICE OF THE COUNTY SURVEYOR  
 145 WEST ALBANY STREET, 3RD FLOOR  
 MONTEREY, CALIFORNIA 93940

CARMEL RIVER JOURNAL	
SAND BAR ELEVATIONS SEPTEMBER 2013	
INVESTIGATION	
DATE	BY
11/17/2011	J. J. J.
DATUM: NAVD83 @ BM#2 @ CRSB EL. = 82.14'	
SCALE	DATE
GRAPHIC - 2011-1012-14	2/6/11
NO.	REV.



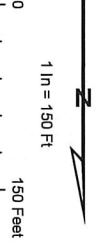
NOTE: NOTCH WAS APPROX. 40' WEST OF 1/9/16 A.M. EDGE OF LAGOON WATER LINE & APPROX. 30' NORTH OF STAIRS

JAN. 6, 2016 - CUT 60' x 60' x AVG. 1.5' DEEP NOTCH @ ELEV. 13.74 (NAVD 88)



**CARMEL LAGOON SAND BAR MANAGEMENT**  
**JANUARY 9 2016 PROJECT EXTENT**

IMAGERY DATED 2015 - DOES NOT REPRESENT PROJECT ENVIRONMENT CONDITIONS.



COUNTY OF MONTEREY  
 RESOURCE MANAGEMENT AGENCY  
 MAP CREATED: 3/10/2016  
 IMAGE SOURCE: ESRI, DIGITALGLOBE, GEOCYE, 2015  
 COORDINATE SYSTEM: NAD 83 CALIFORNIA TEALE ALBERS US FEET