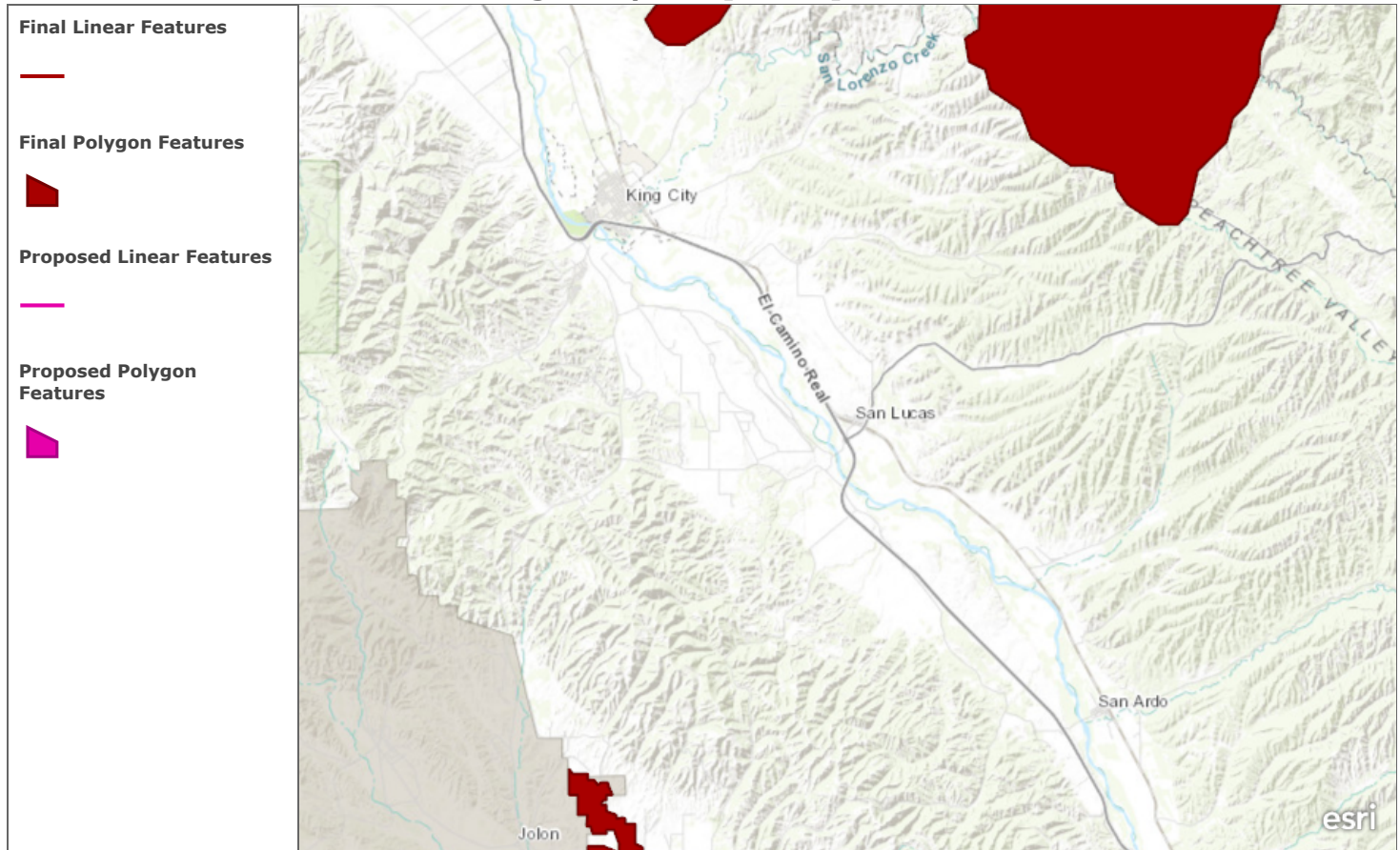


Critical Habitat for Threatened & Endangered Species [USFWS]



A specific geographic area(s) that contains features essential for the conservation of a threatened or endangered species and that may require special management and protection.

Bureau of Land Management, Esri, HERE, Garmin, USGS, NGA, EPA, USDA, NPS | U.S. Fish and Wildlife Service | The data found in this file were developed by the U.S. Fish & Wildlife Service field offices. For more information please refer to the species level metadata found with the individual shapefiles. The ECOS Joint Development Team is responsible for creating and serving this conglomerate file. No data alterations are made by ECOS.