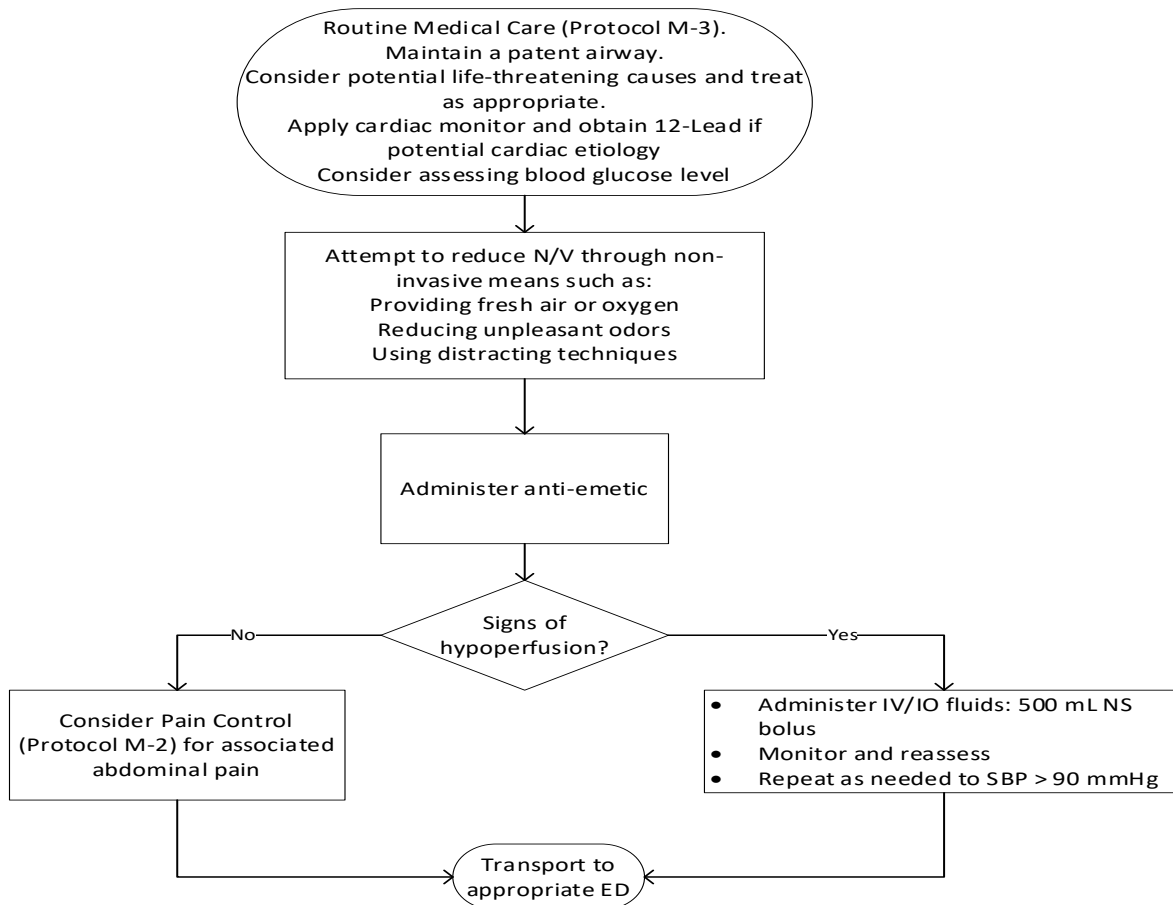




NAUSEA AND VOMITING MANAGEMENT

ALS and BLS CARE



- Antiemetic options:**
- **Ondansetron/Zofran** 4 mg slow IV push over 30 seconds or 4 mg Orally Disintegrating Tablet
 - For persistent symptoms, may repeat once in 15 minutes to a max total dose of 8 mg.
 - Relative contraindication-not recommended during the first trimester of pregnancy.
 - **Diphenhydramine/Benadryl**, 25 mg slow IV push
 - For severe nausea/intractable vomiting not responsive to Ondansetron or in pregnant patients