

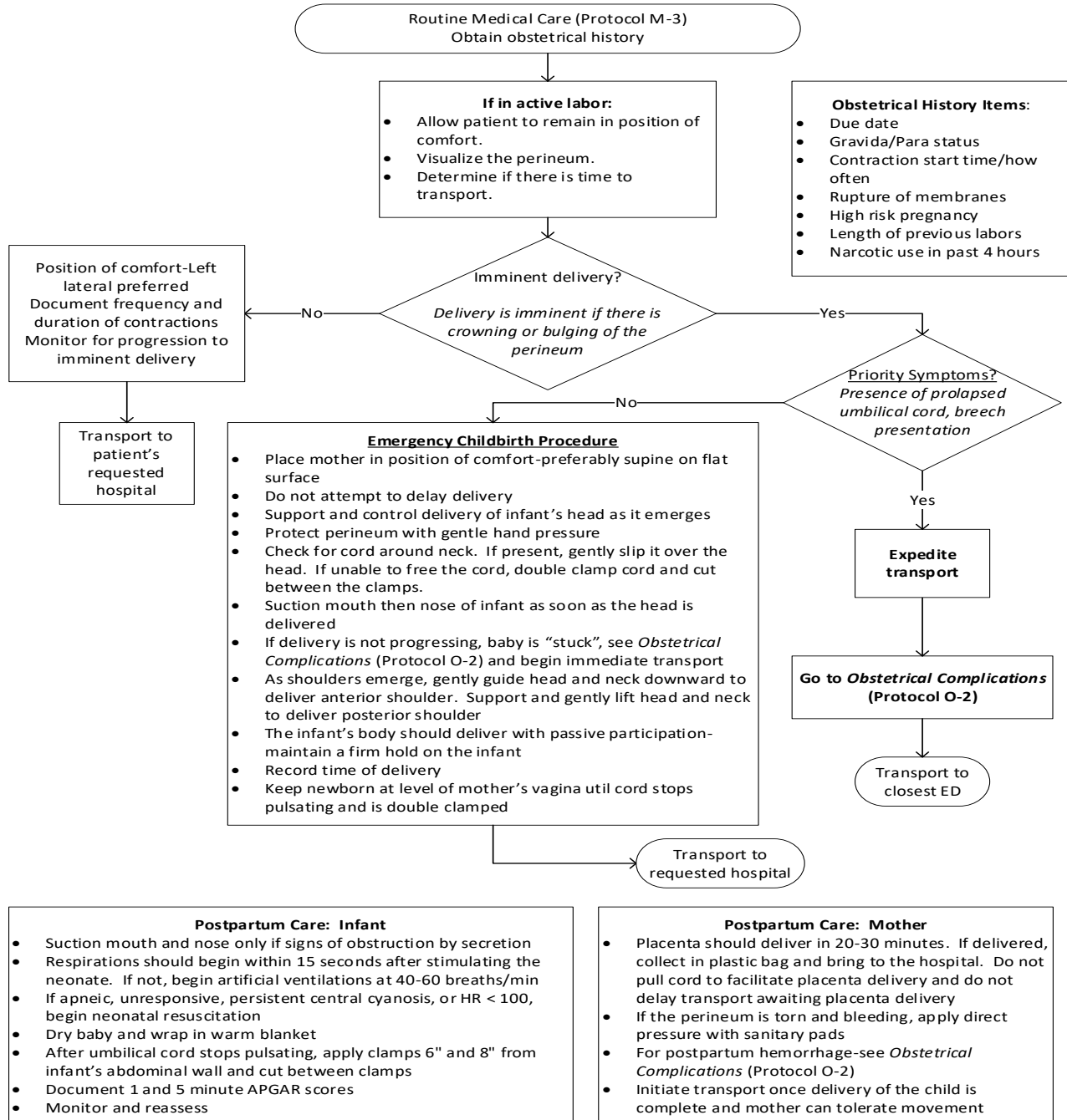
# Monterey County EMS System Policy



Protocol Number: O-1  
 Effective Date: 7/1/2022  
 Review Date: 6/30/2025

## CHILDBIRTH

### ALS and BLS CARE



**Emergency Childbirth Procedure**

- Place mother in position of comfort-preferably supine on flat surface
- Do not attempt to delay delivery
- Support and control delivery of infant's head as it emerges
- Protect perineum with gentle hand pressure
- Check for cord around neck. If present, gently slip it over the head. If unable to free the cord, double clamp cord and cut between the clamps.
- Suction mouth then nose of infant as soon as the head is delivered
- If delivery is not progressing, baby is "stuck", see *Obstetrical Complications (Protocol O-2)* and begin immediate transport
- As shoulders emerge, gently guide head and neck downward to deliver anterior shoulder. Support and gently lift head and neck to deliver posterior shoulder
- The infant's body should deliver with passive participation-maintain a firm hold on the infant
- Record time of delivery
- Keep newborn at level of mother's vagina until cord stops pulsating and is double clamped

Transport to requested hospital

**Postpartum Care: Infant**

- Suction mouth and nose only if signs of obstruction by secretion
- Respirations should begin within 15 seconds after stimulating the neonate. If not, begin artificial ventilations at 40-60 breaths/min
- If apneic, unresponsive, persistent central cyanosis, or HR < 100, begin neonatal resuscitation
- Dry baby and wrap in warm blanket
- After umbilical cord stops pulsating, apply clamps 6" and 8" from infant's abdominal wall and cut between clamps
- Document 1 and 5 minute APGAR scores
- Monitor and reassess

**Postpartum Care: Mother**

- Placenta should deliver in 20-30 minutes. If delivered, collect in plastic bag and bring to the hospital. Do not pull cord to facilitate placenta delivery and do not delay transport awaiting placenta delivery
- If the perineum is torn and bleeding, apply direct pressure with sanitary pads
- For postpartum hemorrhage-see *Obstetrical Complications (Protocol O-2)*
- Initiate transport once delivery of the child is complete and mother can tolerate movement

## APGAR Score Criteria

<b>Component of Acronym</b>	<b>Score of 0</b>	<b>Score of 1</b>	<b>Score of 2</b>	<b>Measures</b>
<b>Appearance</b>	All blue, pale	Cyanosis to extremities	No cyanosis	Skin Color
<b>Pulse</b>	Absent	<100 beats/min	>100 beats/min	Heart rate
<b>Grimace</b>	No response to stimulation	Grimace/feeble cry when stimulated	Sneeze/cough/pulls away when stimulated	Reflex irritability
<b>Activity</b>	None/limp	Some flexion	Active movement	Muscle tone
<b>Respiration</b>	Absent	Weak or irregular	Good/crying	Breathing