

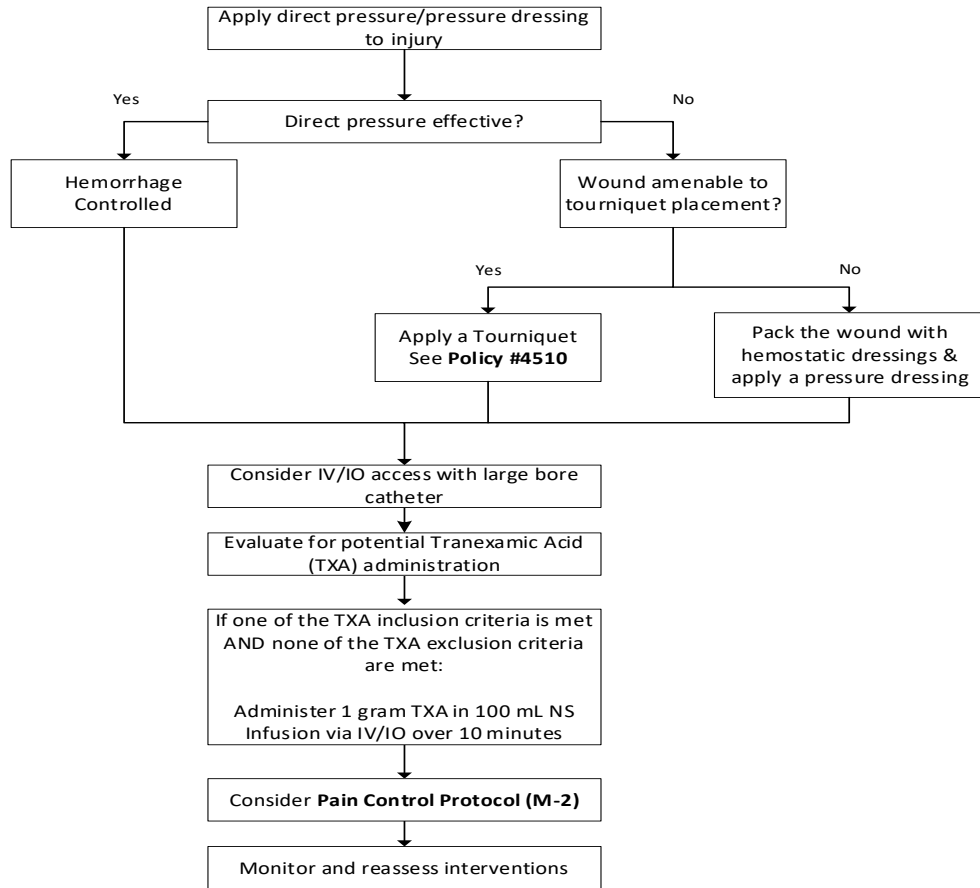
Monterey County EMS System Policy



Protocol Number: T-6
Effective Date: 7/1/2024
Review Date: 6/30/2027

HEMORRHAGE CONTROL

ALS and BLS CARE



TXA Inclusion Criteria
Does the patient meet either of the following criteria?

- Blunt or penetrating traumatic injury occurring within 3 hours with signs and symptoms of hemorrhagic shock and one or more of the following:
 - systolic blood pressure \leq 90 mmHg
 - bleeding uncontrolled by direct pressure or tourniquet
 - significant blood loss and heart rate $>$ 120 BPM

OR

- Significant non-traumatic hemorrhage occurring within 3 hours with signs and symptoms of hemorrhagic shock and one or more of the following:
 - systolic blood pressure \leq 90 mmHg
 - bleeding uncontrolled by direct pressure or tourniquet
 - significant blood loss and heart rate $>$ 120 BPM

TXA Exclusion Criteria
Does the patient meet any of the following criteria?

- $<$ 15 years old
- Time since injury or onset of bleeding $>$ 3 hours
- Isolated Traumatic Brain Injury
- Thromboembolic event (e.g. Stroke, MI, PE) within the past 24 hours
- Hypotension secondary to suspected cervical cord injury with motor deficits or spinal shock
- Gastrointestinal bleeding
- Patient in cardiac arrest
- Isolated drownin or hanging victims