

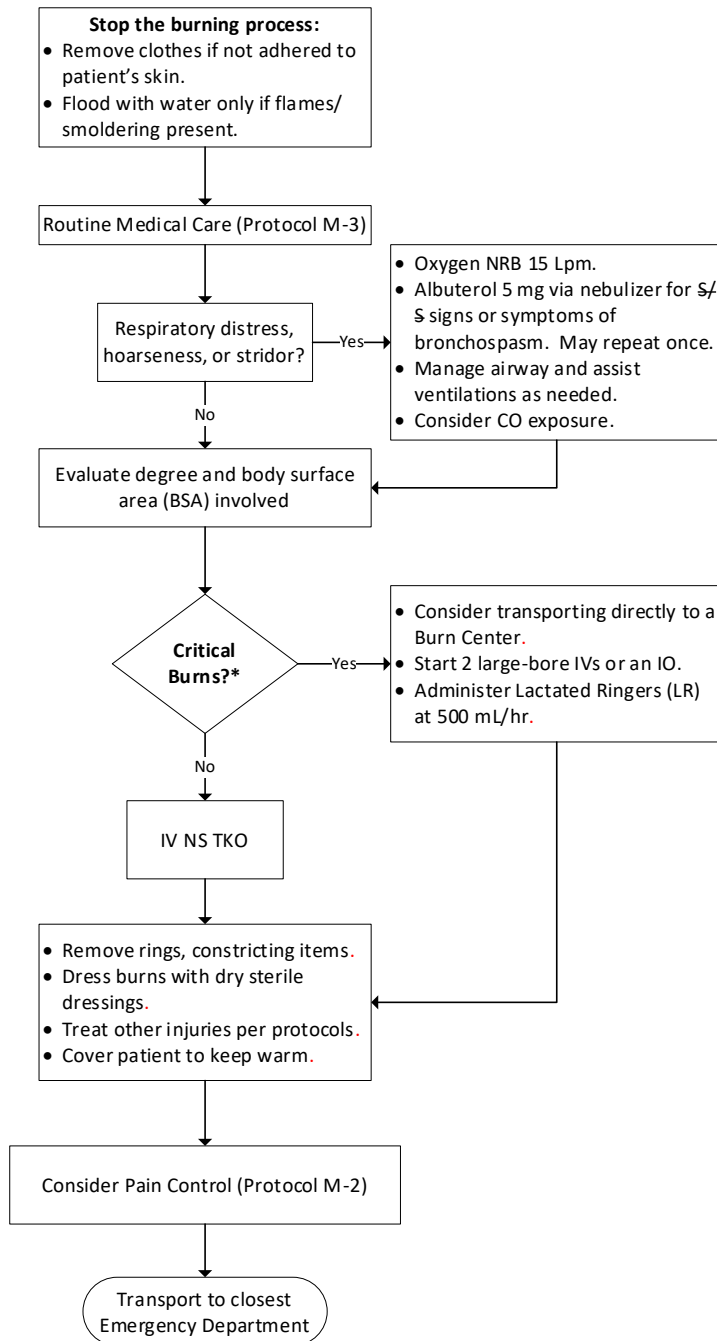
# Monterey County EMS System Policy



Protocol Number: T-1  
 Effective Date: 7/1/2023  
 Review Date: 6/30/2026

## BURN CARE

### ALS and BLS CARE



**Types of Burns**

- Thermal – remove from environment, put out fire.
- Chemical – brush off or dilute chemical, consider HAZMAT team.
- Electrical – make sure patient is de-energized and suspect internal injuries.
- Assume CO if enclosed space.

**\*Critical Burns**

Do not include 1<sup>st</sup> degree burns in this determination

- 2<sup>nd</sup> degree burns > 10% BSA.
- 3<sup>rd</sup> degree burns > 5% BSA.
- Burns involving the face, hands, feet, genitalia, perineum, or major joints.
- Electrical burns, including lightning injury.
- Chemical burns.
- Burn injury with inhalation injury.
- Patients with preexisting medical disorders that could complicate management, prolong recovery, or affect mortality.

Patients with burns and concomitant trauma should be transported to the closest Trauma Center for stabilization.

Patients with inhalation injury or burns to the airway should be transported to the closest Emergency Department for stabilization.

**Burn Centers**

- San Jose – Santa Clara Valley Medical Center Regional Burn Center
- Fresno – Community Regional Medical Center Leon S. Peters Burn Center
- San Francisco – Bothin Burn Center at Saint Francis Memorial Hospital

**“Rule of Nines”  
Burn Chart  
Adult Body Surface Area**

