



# **Agricultural Mitigation Ordinance**

AAC – Ad Hoc Subcommittee

August 14, 2023

# May 8<sup>th</sup> & June 12<sup>th</sup> Subcommittee

On June 12<sup>th</sup>, the Subcommittee voted on four motions directing staff to bring the revised ordinance to AAC, two including different mitigation ratios from May 8<sup>th</sup>; all failed by a 2:2 vote.

# Revisions to Draft Ordinance



- Language related to water quality/quantity projects.
- Section 21.92.050.G-I (Mitigation Requirements)
- Section 21.92.070 (Timing of Mitigation) – Additional Research



# Farmland Categories

State of California Department of Conservation Farmland Mapping and Monitoring Program Categories:

- Prime Farmland
- Farmland of Statewide Importance
- Unique Farmland
- Farmland of Local Importance

# Staff Proposal for Revised

## Farmland Categories Definitions:

- **Prime and Statewide Farmland** means Prime Farmland and Farmland of Statewide Importance.
- **Unique and Local Farmland** means Unique Farmland and Farmland of Local Importance.



# Farmland Classification Categories

## Option 1-A: No Change to Farmland Category

### Definitions

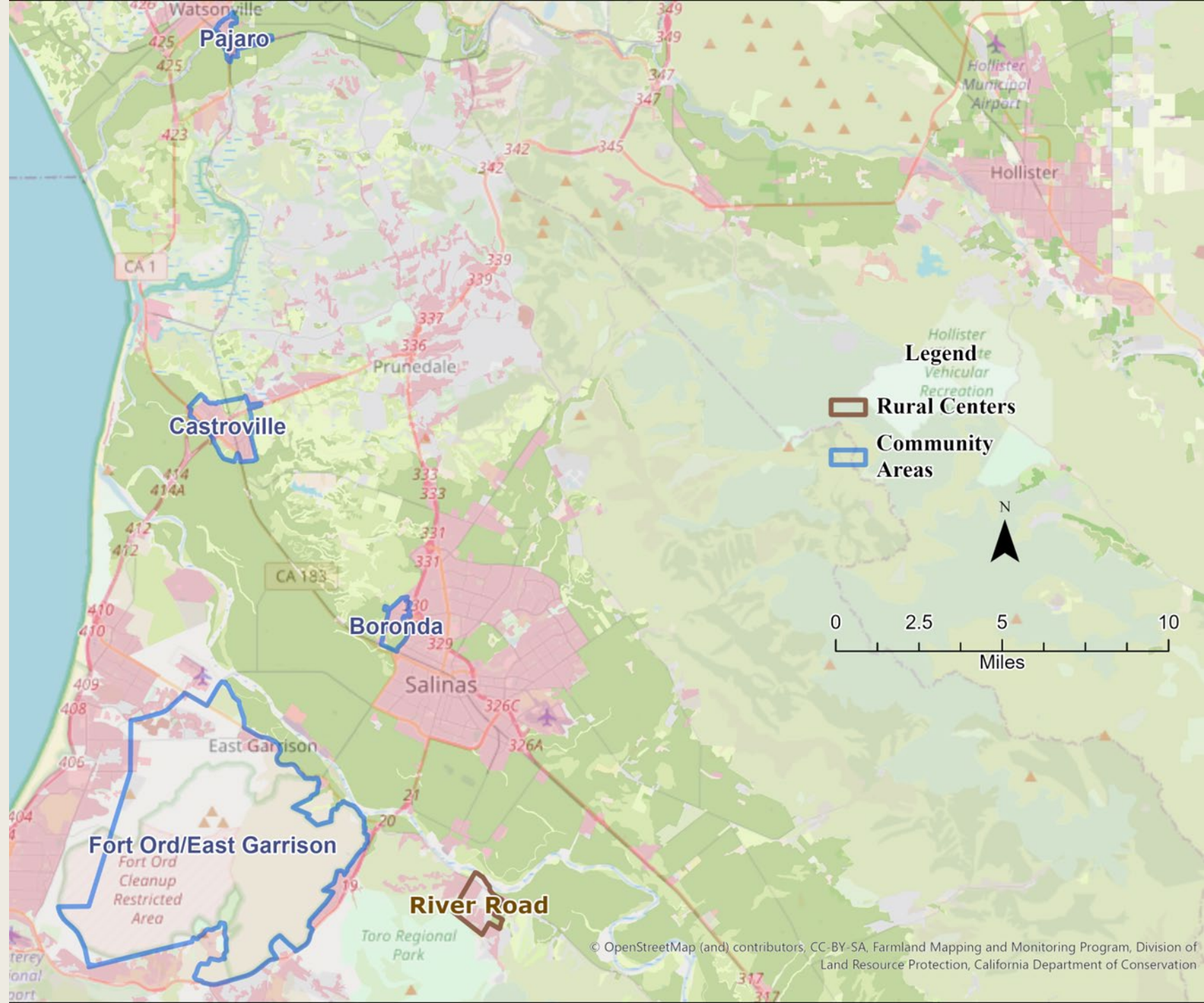
- i. Prime Farmland (Includes FMMP category for Prime Farmland)
- ii. Important Farmland (Includes FMMP categories for Farmland of Statewide Importance, Unique Farmland, and Farmland of Local Importance)

## Option 1-B: Revise Farmland Category Definitions

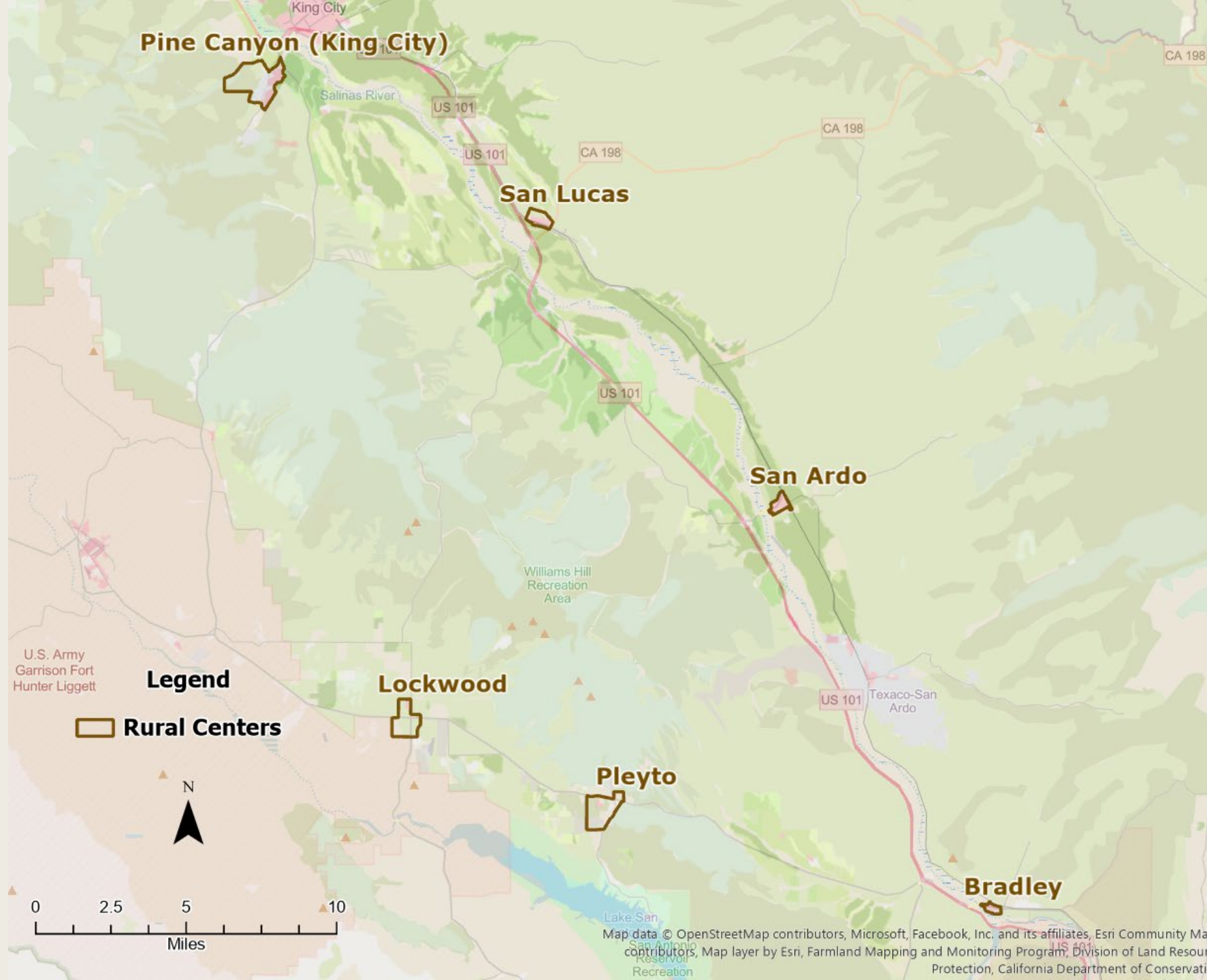
- i. Prime and Statewide Farmland (Includes FMMP categories for Prime Farmland and Farmland of Statewide Importance)
- ii. Unique and Local Farmland (Includes FMMP categories for Unique Farmland and Farmland of Local Importance)



# Community Areas & Rural Centers (CARCs)



# Community Areas & Rural Centers (CARCs) contd.





# FMMP Land Inside Community Areas and Rural Centers (CARCs)



Prime Farmland  $\approx$  208 acres

Farmland of Statewide Importance  $\approx$  246 acres

Unique Farmland  $\approx$  58 acres



# Mitigation Ratios – 1A

## Option 2-A: Mitigation Ratios All FMMP Categories Equal

### *Outside CARCs*

Prime Farmland: 2:1

Important Farmland: 2:1

### *Inside CARCs*

Prime Farmland: 1.5:1

Important Farmland: 1.5:1



## Option 2-B: Mitigation Ratios Differ By FMMP Category

### *Outside CARCs*

Prime Farmland: 2:1

Important Farmland: 1.75:1

### *Inside CARCs*

Prime Farmland: 1.5:1

Important Farmland: 1.25:1



# Mitigation Ratios – 1B

## Option 2-A: Mitigation Ratios All FMMP Categories Equal

### *Outside CARCs*

Prime and Statewide Farmland: 2:1

Unique and Local Farmland: 2:1

### *Inside CARCs*

Prime and Statewide Farmland: 1.5:1

Unique and Local Farmland: 1.5:1



## Option 2-B: Mitigation Ratios Differ By FMMP Category

### *Outside CARCs*

Prime and Statewide Farmland: 2:1

Unique and Local Farmland: 1.75:1

### *Inside CARCs*

Prime and Statewide Farmland: 1.5:1

Unique and Local Farmland: 1.25:1



# Recommendation

Staff requests that the Subcommittee recommend that staff bring forward a revised ordinance to the AAC for consideration.





# Thank You

Melanie Beretti, AICP, Principal Planner

[BerettiM@co.monterey.ca.us](mailto:BerettiM@co.monterey.ca.us)

Taylor Price, Associate Planner

[PriceT1@co.Monterey.ca.us](mailto:PriceT1@co.Monterey.ca.us)