

# Monterey County EMS System Policy



Protocol Number: C-3  
Effective Date: 8/25/2023  
Review Date: 6/30/2025

## CHEST PAIN SUSPECTED CARDIAC ORIGIN

(Acute Coronary Syndrome)

### **BLS CARE**

Routine Medical Care

**Aspirin 324mg PO.** This must be chewable aspirin and not enteric coated.

**Nitroglycerin 0.4mg SL.** May assist the patient with taking their own NTG if the patient desires and the patient's systolic BP is above 110 mmHg. May repeat every 5 minutes to total of 3 doses if the patient's systolic BP is above 110 mmHg. Do not allow the patient to self-administer if they have used erectile dysfunction medications within the prior 48 hours.

### **ALS CARE**

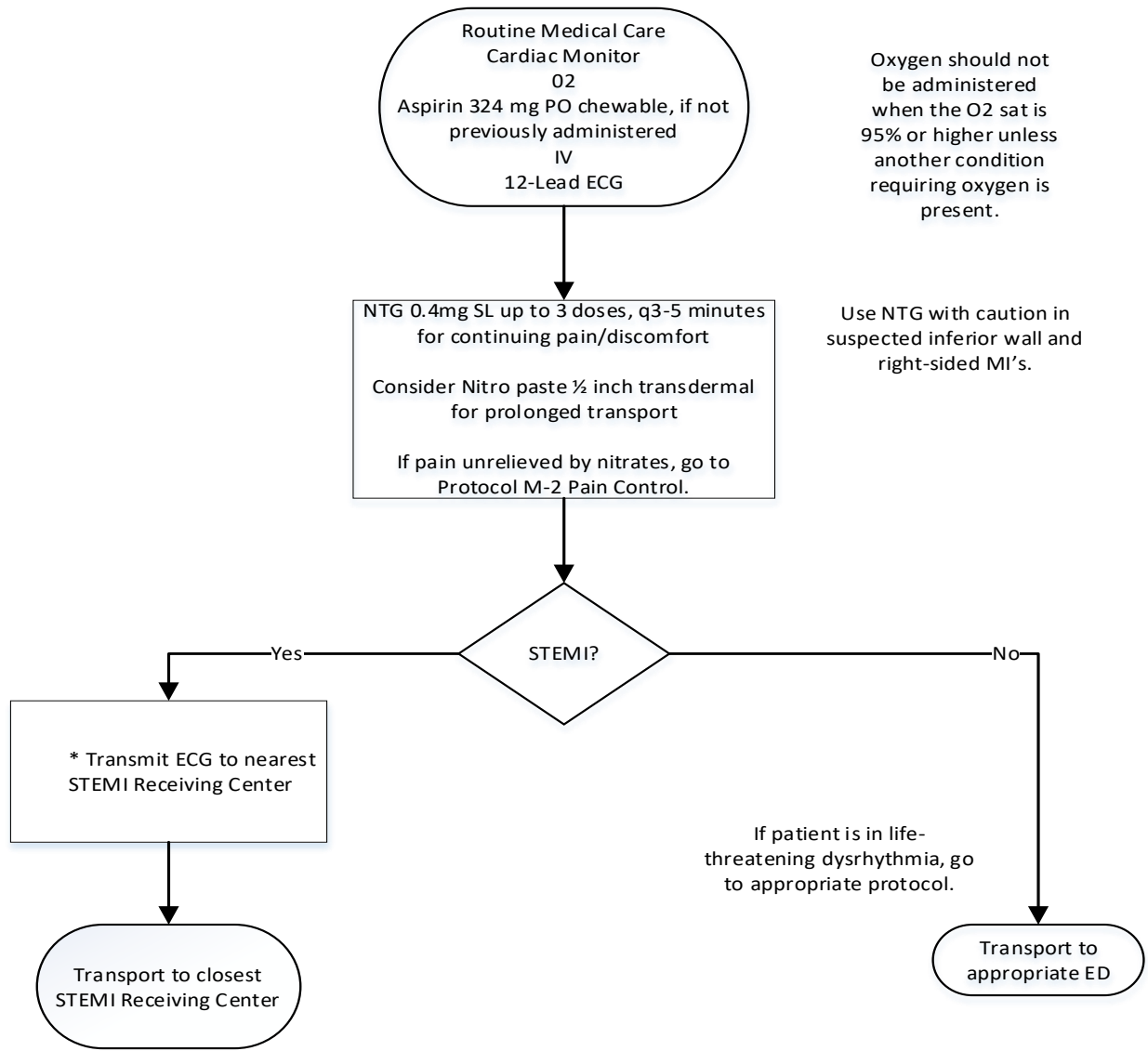
Routine Medical Care.

### **NOTES:**

Do not administer Nitroglycerin in the following circumstances:

- Patient has taken phosphodiesterase inhibitors within the past 48 hours, such as Viagra, Cialis, Levitra, Stendra, Staxyn, sildenafil, avanafil, tadalafil, or vardenafil.
- Administer nitrates with extreme caution, if at all, to patients with inferior wall MI and suspected right ventricular involvement because these patients require adequate RV preload.

Do not delay transport if technical difficulties impede ECG transmission. Attempt to send en-route whenever possible.



Routine Medical Care  
Cardiac Monitor  
O2  
Aspirin 324 mg PO chewable, if not  
previously administered  
IV  
12-Lead ECG

Oxygen should not  
be administered  
when the O2 sat is  
95% or higher unless  
another condition  
requiring oxygen is  
present.

NTG 0.4mg SL up to 3 doses, q3-5 minutes  
for continuing pain/discomfort  
  
Consider Nitro paste 1/2 inch transdermal  
for prolonged transport  
  
If pain unrelieved by nitrates, go to  
Protocol M-2 Pain Control.

Use NTG with caution in  
suspected inferior wall and  
right-sided MI's.

STEMI?

\* Transmit ECG to nearest  
STEMI Receiving Center

Transport to closest  
STEMI Receiving Center

If patient is in life-  
threatening dysrhythmia, go  
to appropriate protocol.

Transport to  
appropriate ED