

# GONZALES RIVER ROAD BRIDGE REHABILITATION

Public Works, Facilities & Parks

County of Monterey  
Pessagno Winery, Gonzales, CA  
August 7, 2024

# AERIAL VIEW OF SITE





# INTRODUCTIONS

- County
- Public Works
- Consultants

# AGENDA

- Introductions
- Brief History
- Current Efforts
- River Flows
- Project Configuration
- Traffic Handling
- Right of Way
- Schedule
- Costs and Funding
- Questions and Answers



# BRIEF HISTORY: GONZALES BRIDGE



Bridge Built  
in 1930



Seismically  
Retrofitted in 2001



Caltrans Bridge  
Inspection 2020

# BRIDGE INSPECTION CONCLUSIONS



Deficient  
Bridge Rails



Susceptible to  
Overtopping During  
Floods



Approach Road  
Overtops



Susceptible to  
Scour



Is Fracture  
Critical



Is Hydraulically  
Inadequate  
2023 Washout



Too Narrow

## EFFORTS TO DATE

County Secured  
HBP Funds for  
Rehabilitation in  
2015

Scope Includes  
Superstructure  
Replacement Only

Preliminary  
Studies Performed  
July 2017

Complete  
Replacement  
Recommended &  
Approved 2019

Funding  
Limitations in 2020

Scope Changed  
Back to  
Superstructure  
Replacement 2023

Currently  
Designing Project

# WE ADDRESS THE DEFICIENCIES



<b>Deficiency</b>	<b>Solution</b>
<b>Bridge Railings</b>	New Concrete Barriers
<b>Flood Overtopping, Scour</b>	Raise Bridge 4', Remove Piers
<b>Fracture Critical</b>	New Superstructure
<b>Narrow</b>	Widen Bridge & Approach
<b>Approach Washout</b>	Armor, Raise End of Bridge 9', Lengthen 40'
<b>Debris Hangup</b>	Removing 8 Existing Piers & Lengthen



# PROPOSED BRIDGE CONFIGURATION



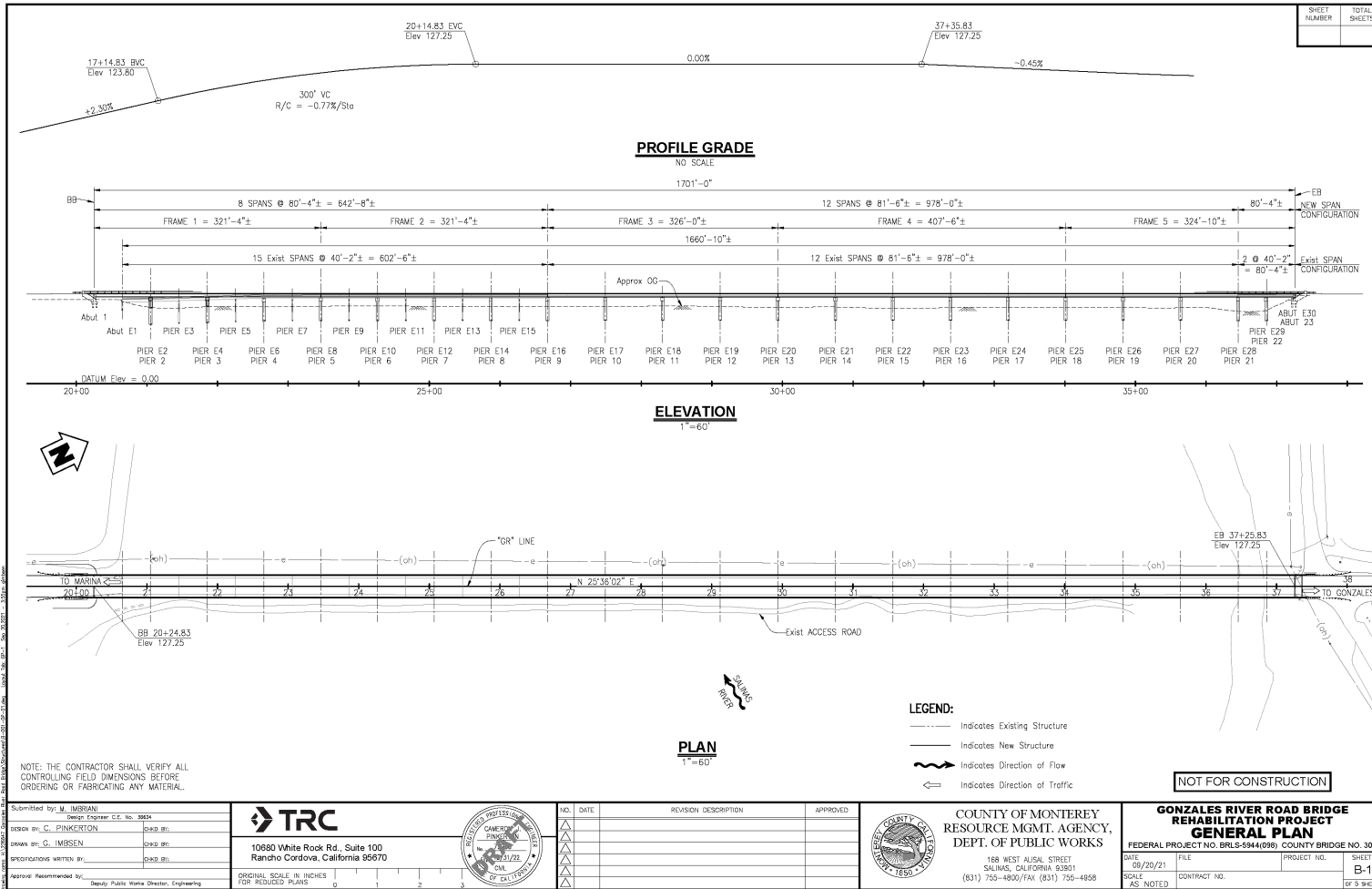
- Clear Width 30' – 12' Lanes, 3' Shoulders
- 22 – 80' Long Spans
- Profile Grade Raised 2-4'
- South End Of Bridge Raised ~9'
- Steel Girders, Concrete Deck
- Retain Some Existing Foundations, Remove Some
- Lengthen Bridge 40' South, New Abutment
- Metal Bridge Rail
- Tapered Approaches, Realign Short Road

# RIVER FLOWS

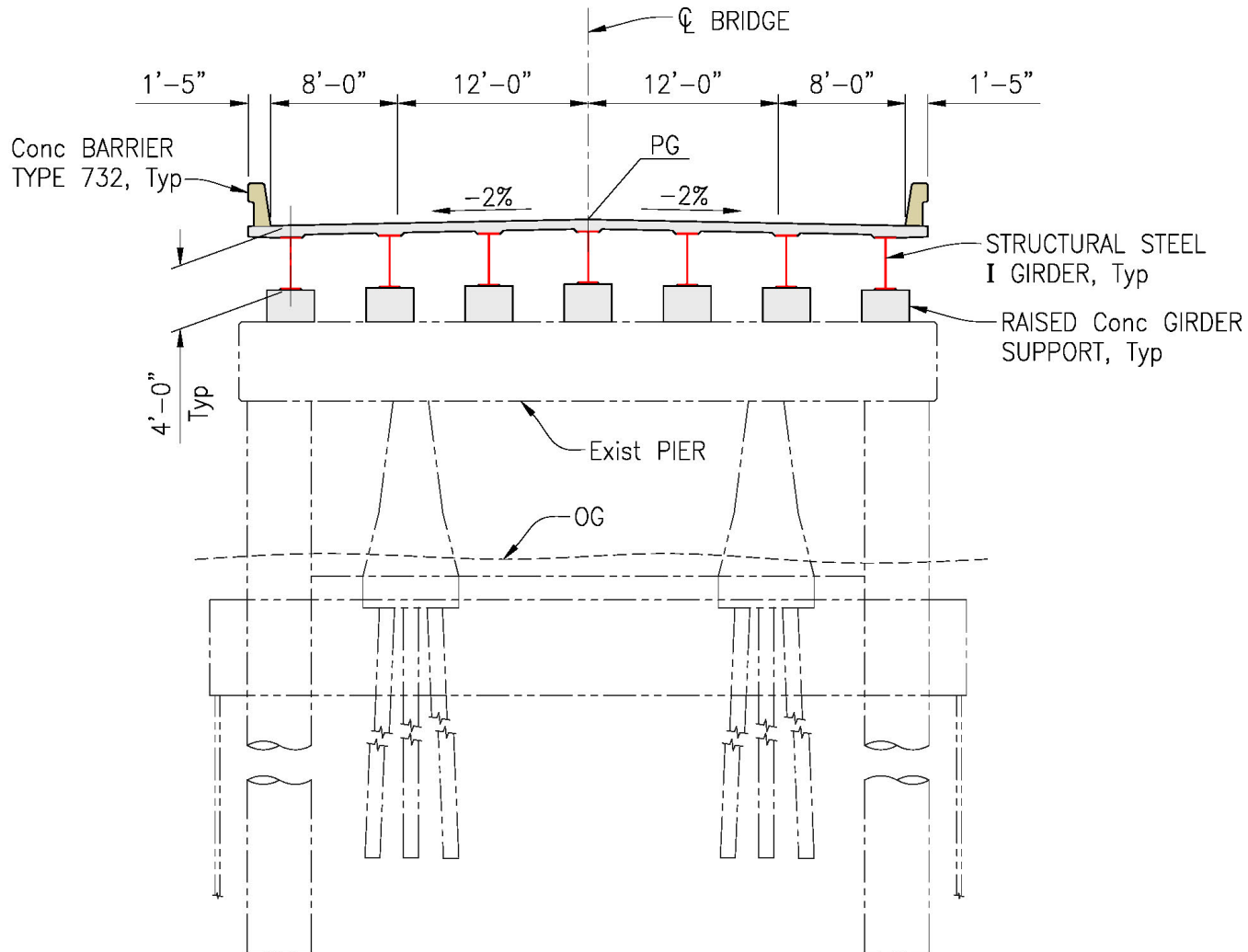
- Predicted Flows are Much Higher Than in the Past
- Flow Overtops Roadway on South Approach
- South End of Bridge Submerged
- Approach Washout in 2023



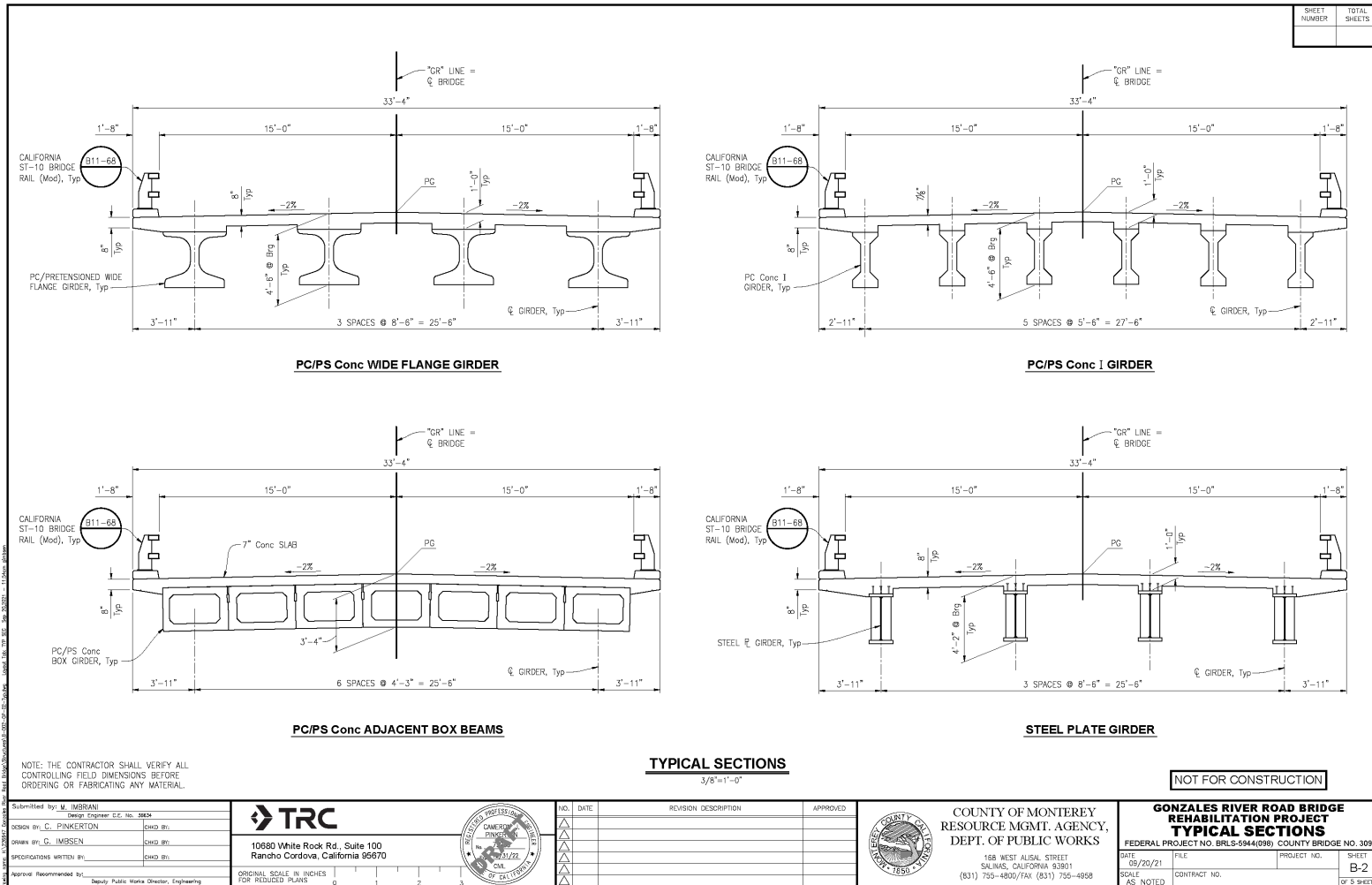
# BRIDGE GENERAL PLAN



# STEEL GIRDER SCHEMATIC



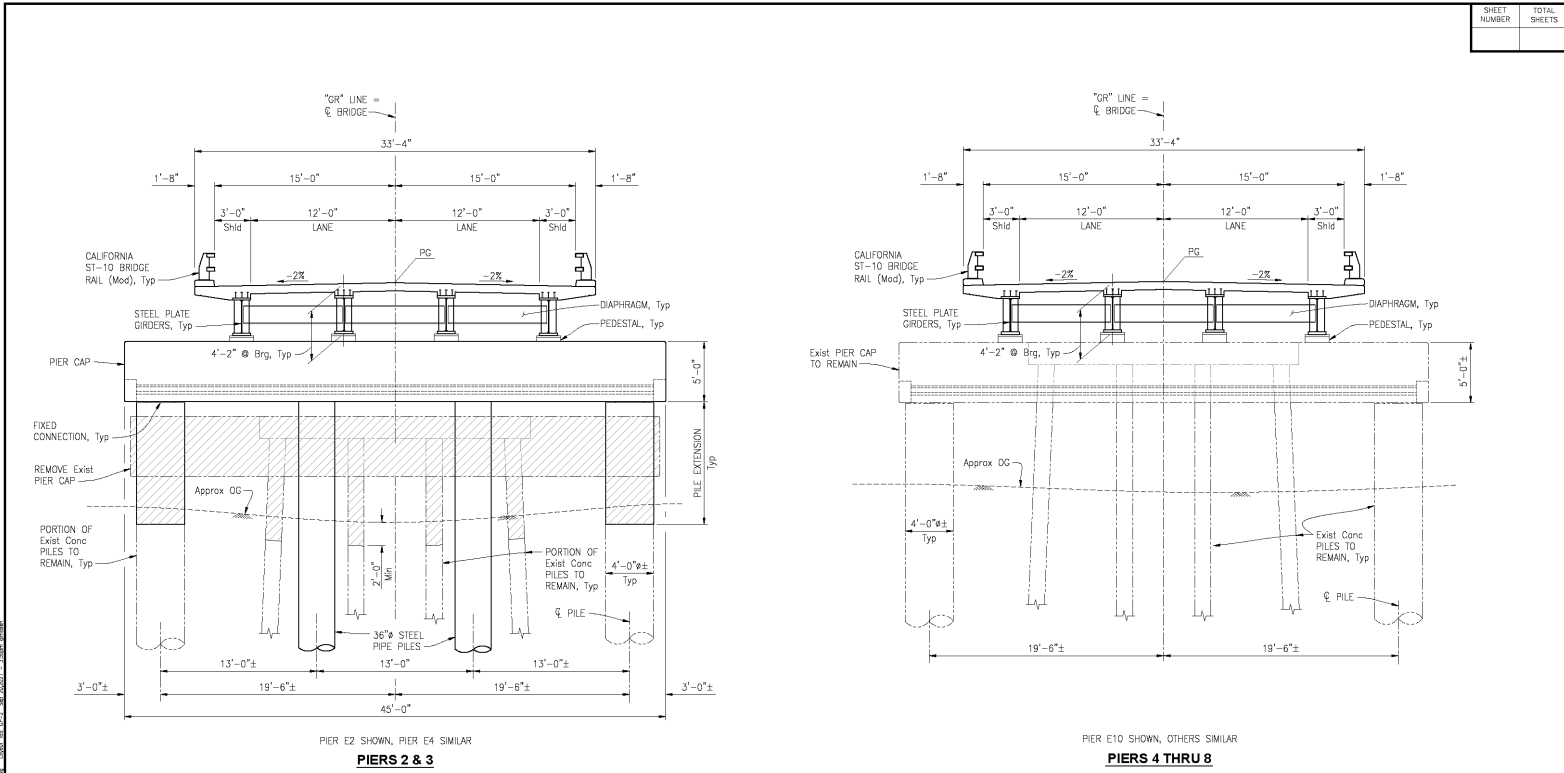
# STRUCTURE TYPES STUDIED



# SHORT SPAN PIER TREATMENT



SHEET NUMBER	TOTAL SHEETS



NOTE: THE CONTRACTOR SHALL VERIFY ALL CONTROLLING FIELD DIMENSIONS BEFORE ORDERING OR FABRICATING ANY MATERIAL.

- NOTE:**
- For Piers 9 thru 21, see "PIER DETAILS NO. 2" sheet.
  - For Pier 22, see "PIER DETAILS NO. 3" sheet.

- LEGEND:**
- Indicates Existing Structure
  - Indicates New Structure
  - ▨ Indicates Bridge Removal (Portion)

**NOT FOR CONSTRUCTION**

Submitted by: M. IMBSEN Design Engineer, C.E. No. 3604
Drawn by: C. PINKERTON CADD (R)
Drawn by: G. IMBSEN CADD (R)
Specifications written by: [Blank] CADD (R)
Approved/Recommended by: Deputy Public Works Director, Engineering

10680 White Rock Rd, Suite 100  
Rancho Cordova, California 95670

ORIGINAL SCALE IN INCHES  
FOR REDUCED PLANS



NO.	DATE	REVISION DESCRIPTION	APPROVED

COUNTY OF MONTEREY  
RESOURCE MGMT. AGENCY,  
DEPT. OF PUBLIC WORKS

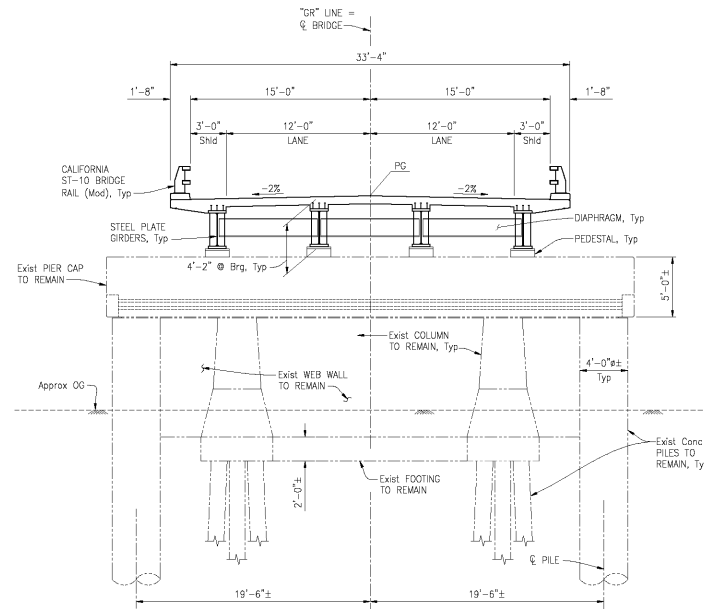
168 WEST ALISA STREET  
SALINAS, CALIFORNIA 93901  
(831) 755-4800/FAX (831) 755-4858

<b>GONZALES RIVER ROAD BRIDGE REHABILITATION PROJECT</b>			
<b>PIER DETAILS NO. 1</b>			
FEDERAL PROJECT NO. BRLS-5944(099) COUNTY BRIDGE NO. 309			
DATE: 05/20/21	FILE:	PROJECT NO.:	SHEET
SCALE: AS NOTED	CONTRACT NO.:		B-3
			OF 3 SHEETS

# LONG SPAN PIER TREATMENT



SHEET NUMBER	TOTAL SHEETS



PIER E17 SHOWN, OTHERS SIMILAR  
**PIERS 9 THRU 21**

**PIER ELEVATION**  
1/4"=1'-0"

**LEGEND:**  
 - - - - - Indicates Existing Structure  
 ———— Indicates New Structure

**NOTE:**  
 1. For Pier 22, see "PIER DETAILS NO. 3" sheet.

**NOT FOR CONSTRUCTION**

NOTE: THE CONTRACTOR SHALL VERIFY ALL CONTROLLING FIELD DIMENSIONS BEFORE ORDERING OR FABRICATING ANY MATERIAL.

Submitted by: <b>M. MIRANI</b> Design Engineer, C.E. No. 36654	Checked by: _____
Design by: <b>C. PINKERTON</b>	Checked by: _____
Drawn by: <b>G. IMBSEN</b>	Checked by: _____
Specifications written by: _____	Checked by: _____
Approved/Recommended by: _____ County Public Works Director, Engineering	



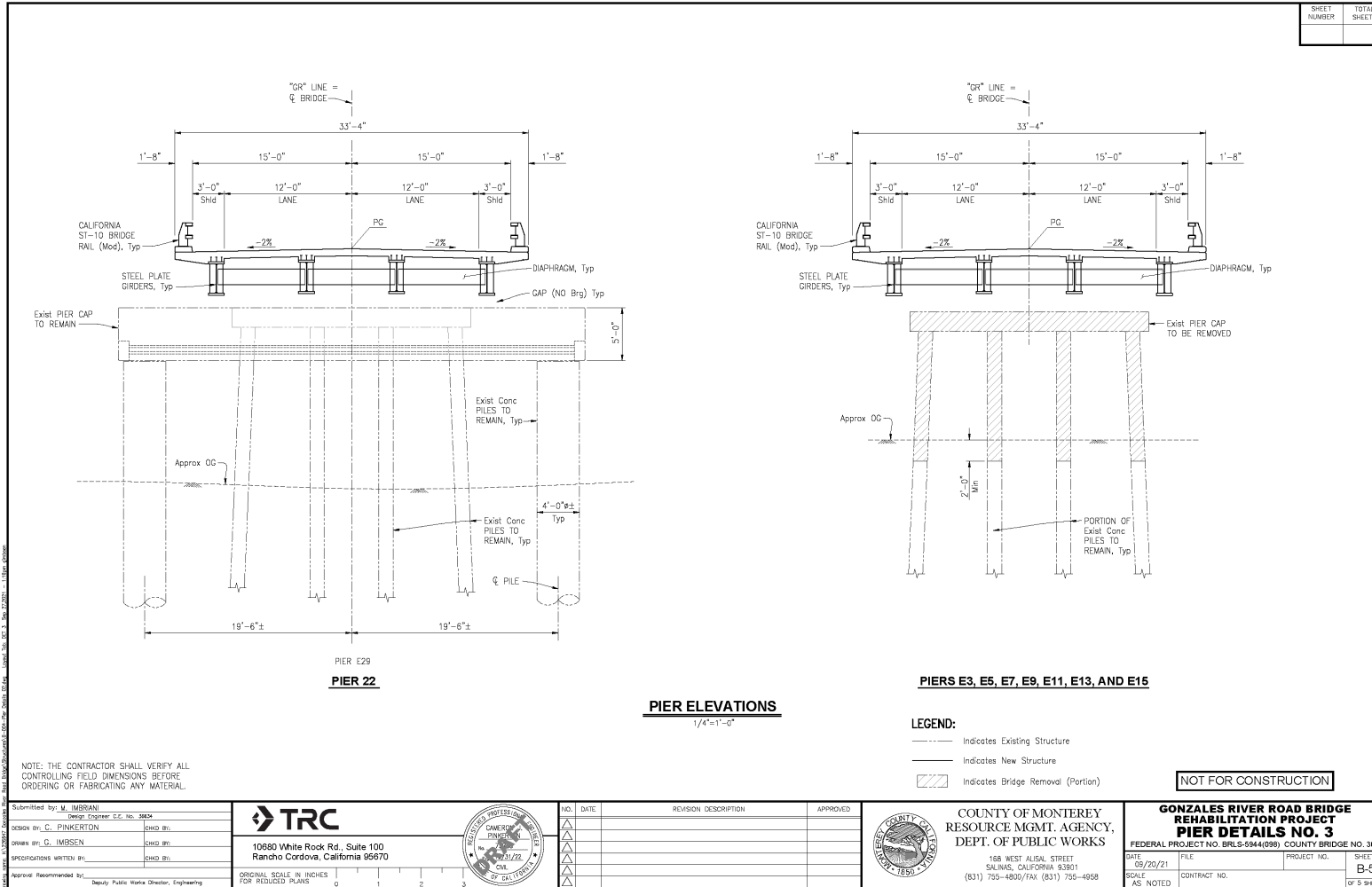
NO.	DATE	REVISION DESCRIPTION	APPROVED



COUNTY OF MONTEREY  
 RESOURCE MGMT. AGENCY,  
 DEPT. OF PUBLIC WORKS  
 168 WEST ALSAL STREET  
 SALINAS, CALIFORNIA 93901  
 (831) 755-4800/FAX: (831) 755-4958

<b>GONZALES RIVER ROAD BRIDGE REHABILITATION PROJECT PIER DETAILS NO. 2</b>			
FEDERAL PROJECT NO. BRIS-5944(09)		COUNTY BRIDGE NO. 309	
DATE: 09/25/21	FILE:	PROJECT NO.:	SHEET: B-4
SCALE: AS NOTED	CONTRACT NO.:	OF 5 SHEETS	

# LAST PIER AND EXISTING PIER REMOVAL





## TRAFFIC HANDLING

- Bridge Closed During Construction
- Access Road Through Site As Permitted:
  - Agricultural Vehicles
  - Emergency Vehicles
  - Low Water Crossing Temp. Bridge
- Traffic Detour via Chualar or Arroyo Seco Rd



# TRAFFIC HANDLING



# DETOUR ROUTES

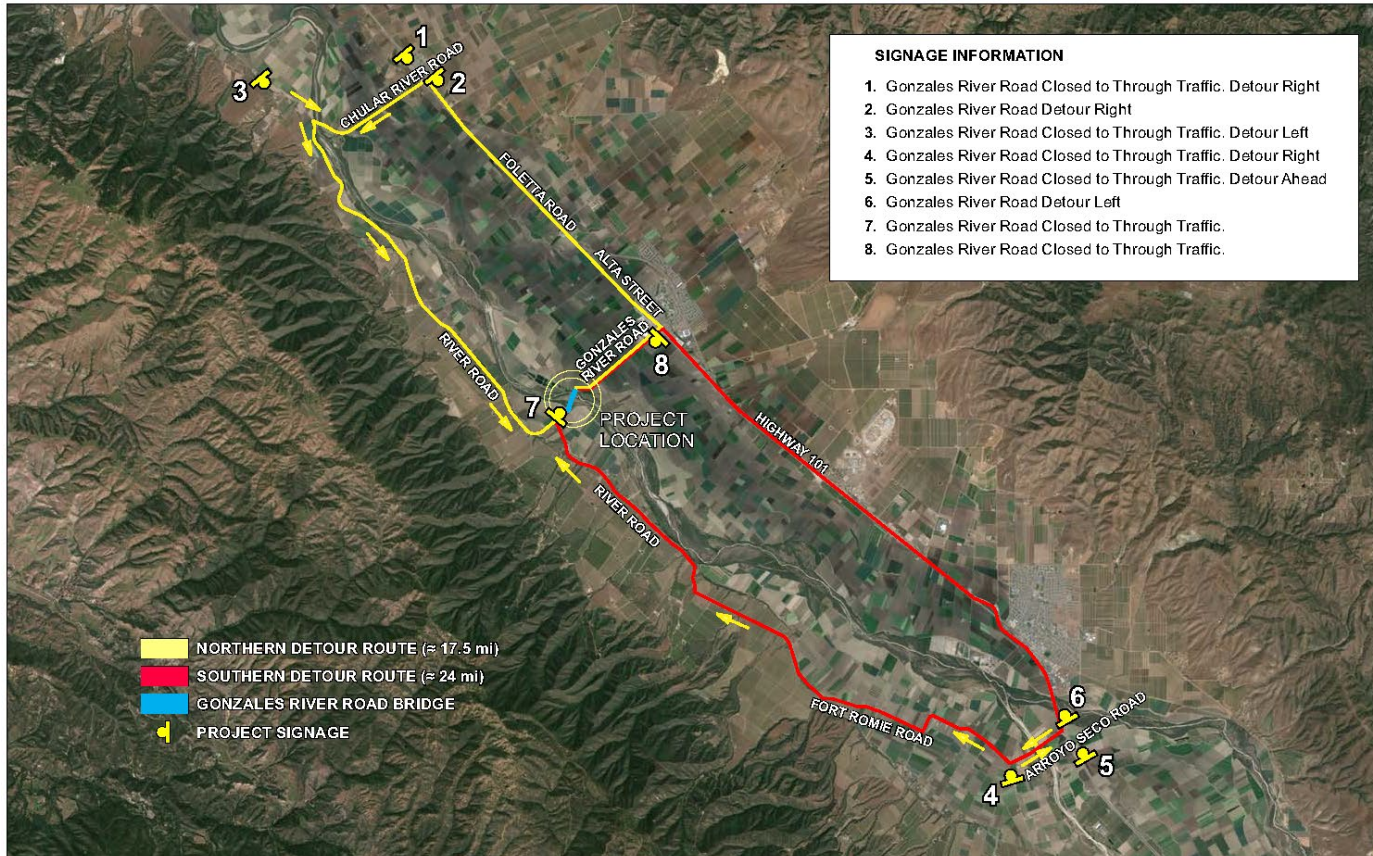
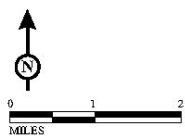


FIGURE 6



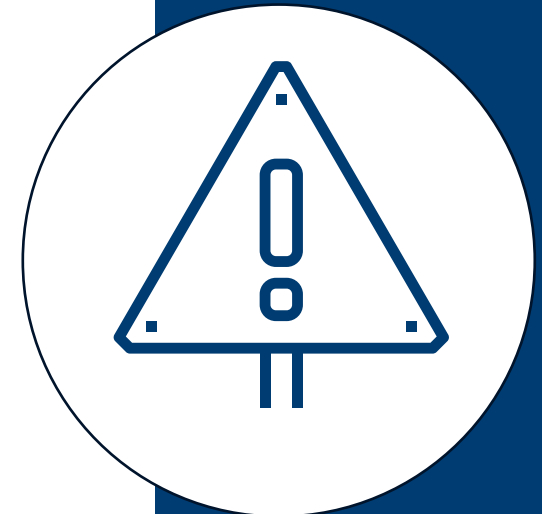
SOURCE: TRC (2016)

I:\TRT1502\G\Construction Detour Gonzales-RR.cdr (8/10/2016)

*Gonzales River Road Bridge Replacement Project  
 Monterey County, California  
 Federal Project Number BRLS-5944(098)  
 Construction Detour Route*

## RIGHT OF WAY

- Staging Areas at NE and SE Corners
- Temporary Construction Easements
- Acquisition Along Widened Roadway





# STRATEGIES FOR: BRIDGE REPLACEMENT



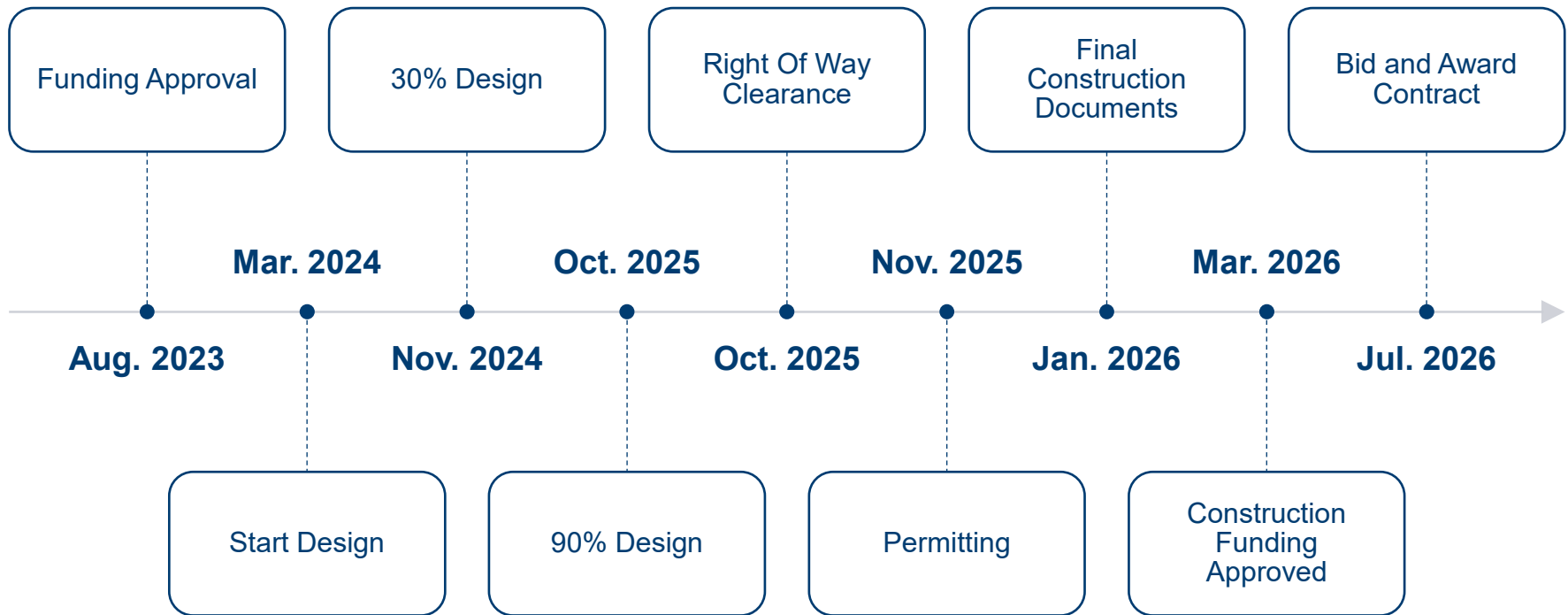
- CALTRANS WILL PROVIDE REHAB COST
- PETITION CALTRANS FOR REPLACEMENT
- SECURE OTHER NON-FEDERAL FUNDING \$15M
- COUNTY CONTRIBUTE DIFFERENCE
- ASSESSMENT DISTRICT
- EARMARK
- POLITICAL APPROACH – CT HQ
- CONSIDERATIONS
  - GETTING \$40M FOR DAVIS ROAD BRIDGE
  - CT DENYING FUNCTIONALLY OBSOLETE BRIDGES
- RERATE BRIDGE

# WE WILL EXPEDITE SCHEDULE



- ALL SPANS THE SAME LENGTH
- STEEL GIRDERS ALL THE SAME
- PRECAST CONCRETE DECK PANELS
- METAL RAILINGS

# PROPOSED DESIGN SCHEDULE





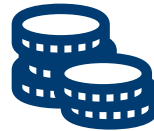
# PROPOSED CONSTRUCTION SCHEDULE



# COSTS AND FUNDING



Cost Estimate  
\$35M



Federal HBP  
Funding 88.53%  
= \$31M



\$14M Currently  
Reserved

# Questions

---