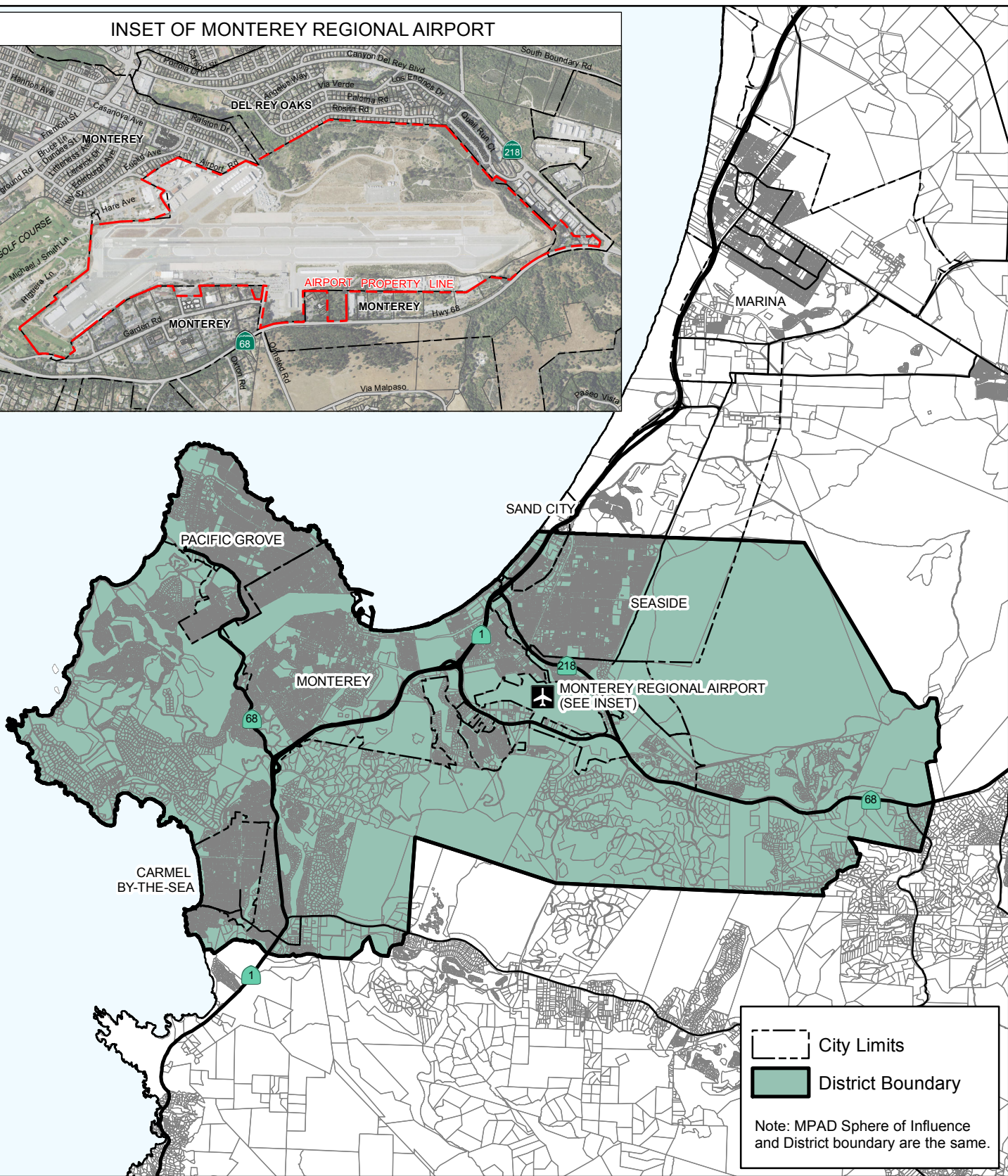
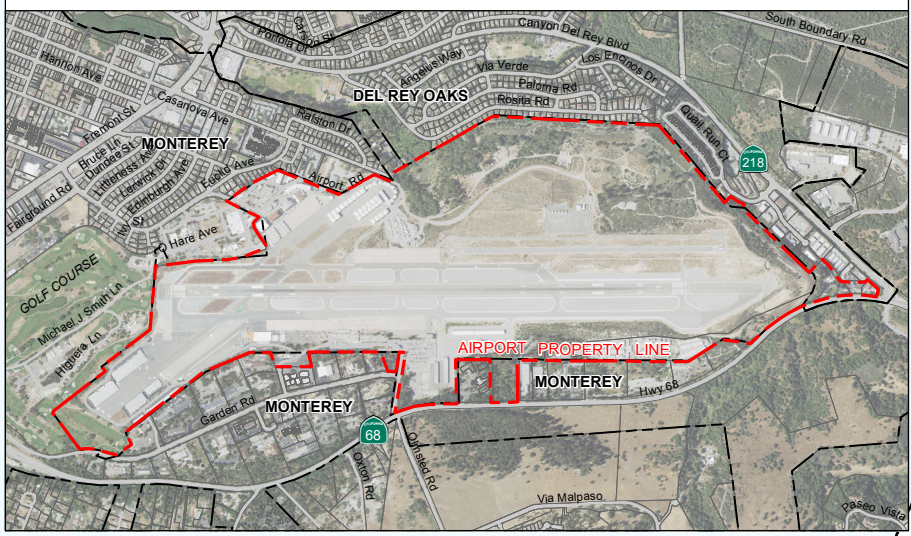


INSET OF MONTEREY REGIONAL AIRPORT



City Limits
 District Boundary
 Note: MPAD Sphere of Influence and District boundary are the same.

LAFCO of Monterey County

LOCAL AGENCY FORMATION COMMISSION

P.O. Box 1369
Salinas, CA 93902
Telephone (831) 754-5838

132 W. Gabilan St., Suite 102
Salinas, CA 93901
FAX (831) 754-5831



AIRPORT DISTRICT

**MONTEREY PENINSULA
AIRPORT DISTRICT**

Sphere of Influence affirmed: 12/05/2016
Map prepared: Feb. 2017