

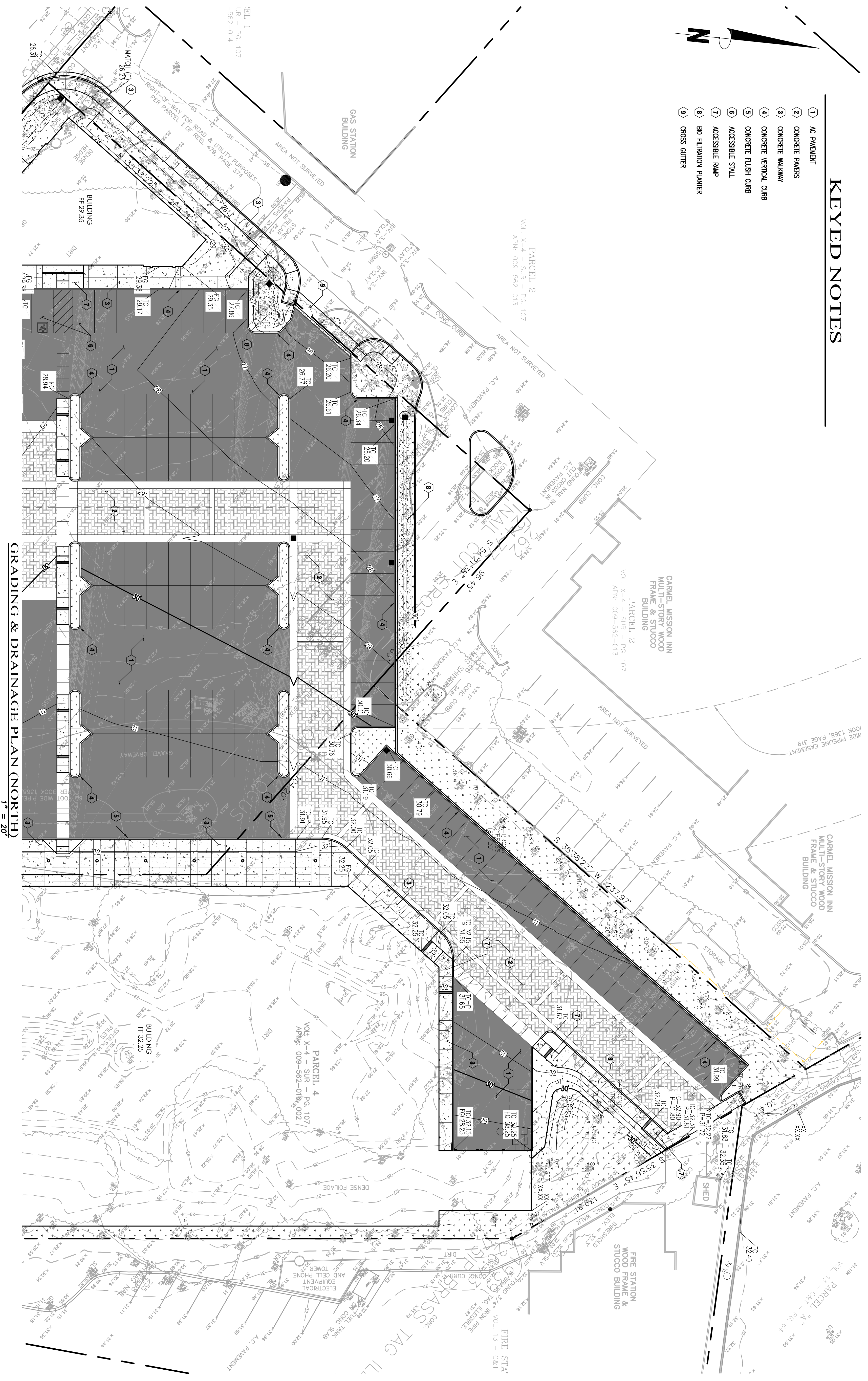


KEYED NOTES

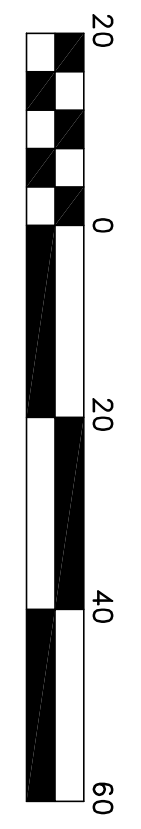
- ① AC PAVEMENT
- ② CONCRETE PAVERS
- ③ CONCRETE WALKWAY
- ④ CONCRETE VERTICAL CURB
- ⑤ CONCRETE FLUSH CURB
- ⑥ ACCESSIBLE STALL
- ⑦ ACCESSIBLE RAMP
- ⑧ BIO FILTRATION PLANTER
- ⑨ CROSS GUTTER

HATCH LEGEND

- AC PAVEMENT
- CONCRETE PAVEMENT
- PAVERS (SEE ARCHITECTS PLANS FOR TYPE)
- LANDSCAPE (SEE LANDSCAPE ARCHITECT'S PLANS)
- BIO-FILTRATION PLANTER



GRADING & DRAINAGE PLAN (NORTH)
 1" = 20'

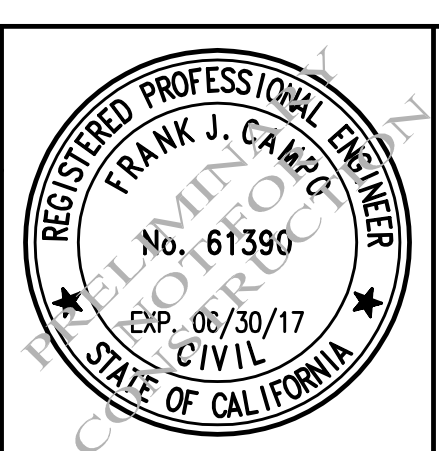


SCALE:	AS NOTED
DATE:	03/06/2016
DESIGN BY:	FJC
DRAWN BY:	ECH
CHECKED BY:	FJC
SHEET NUMBER:	

GRADING & DRAINAGE (NORTH)

RIO RANCH RETAIL

CARMEL, CA 93923
 PREPARED FOR: FOOTHILLS PARTNERS INC.



C3 ENGINEERING INCORPORATED

Civil Engineering Land Development Stormwater Control
 126 Bonifacio Place, Suite C, Monterey, CA 93940
 Phone: (831) 647-1192 Fax (831) 647-1194
 mail@c3Engineering.net

REV.	DATE	DESCRIPTION	BY