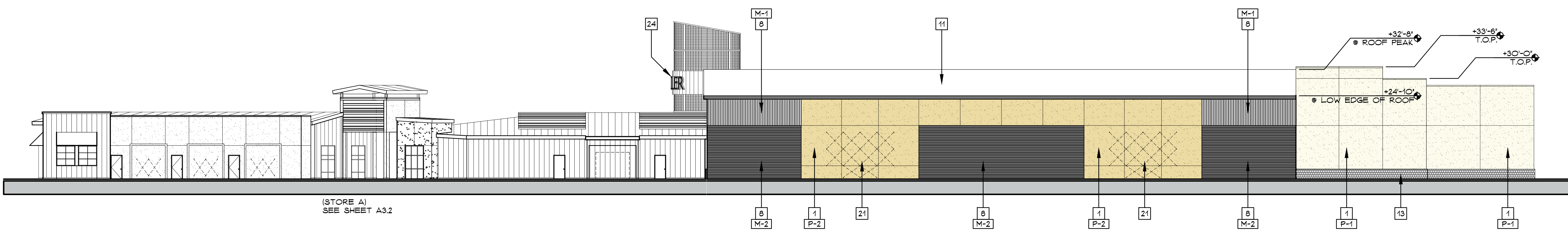


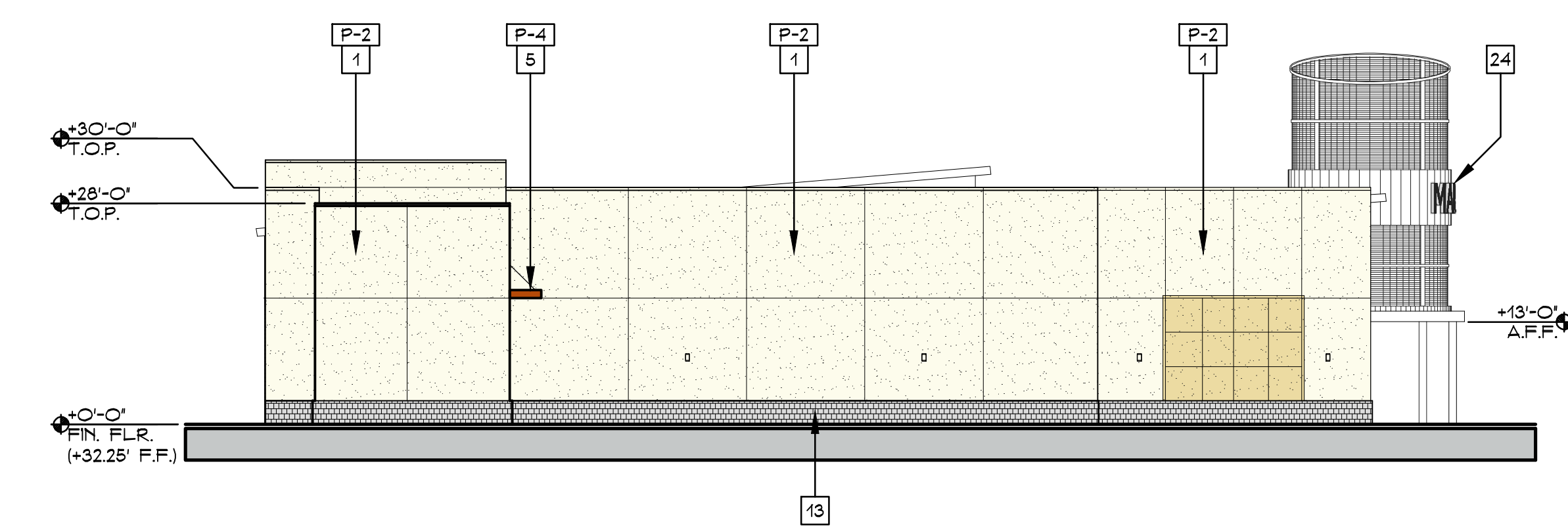
West Elevation

1/16" = 1'-0"



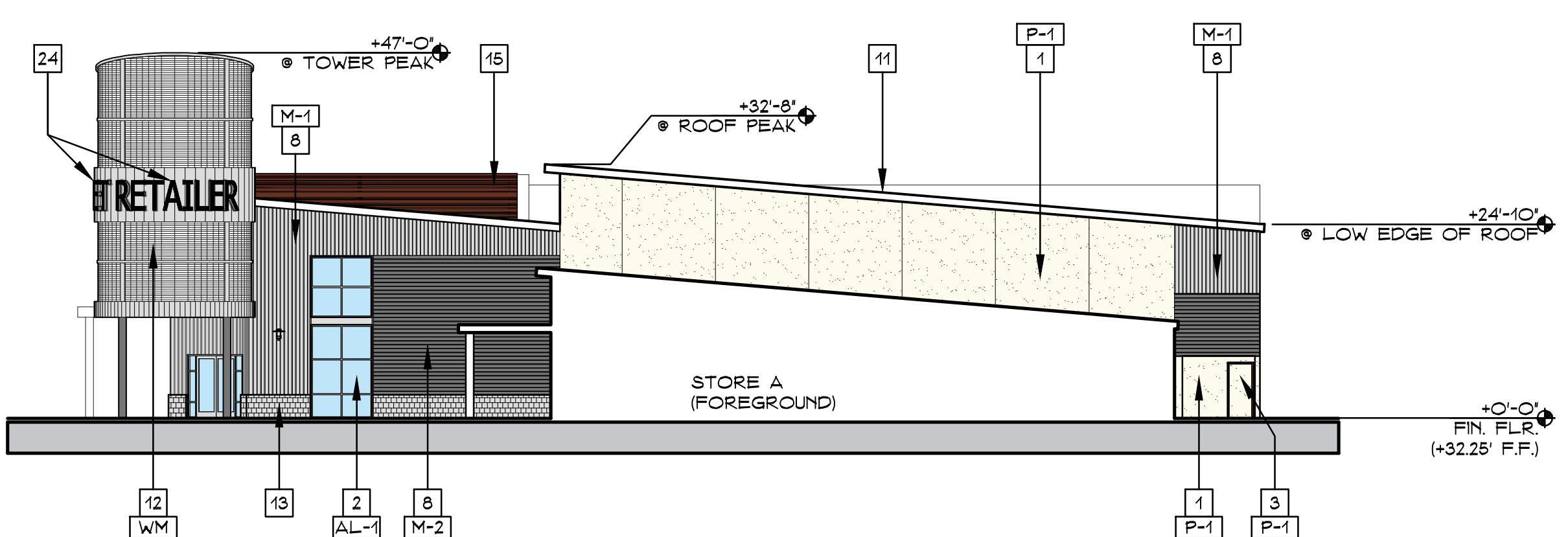
East Elevation

1/16" = 1'-0"



North Elevation

1/16" = 1'-0"



South Elevation

1/16" = 1'-0"

KEYNOTES

- 1 CEMENT PLASTER FINISH
- 2 INSULATED STOREFRONT WINDOW SYSTEM
- 3 METAL MAN-DOOR
- 4 STANDING SEAM METAL ROOF
- 5 METAL AWNING
- 6 FABRIC AWNING
- 7 BOARD AND BATTEN SIDING
- 8 PRE-FINISHED METAL SIDING
- 9 ROLL-UP DOOR
- 10 COVERED WALK W/ FUTURE GREEN ROOF BY TENANT
- 11 SINGLE-PLY ON LOW SLOPE ROOF
- 12 TOWER W/ WIRE MESH AND METAL PANELS
- 13 SPLIT FACE CMU BLOCK WALL
- 14 ACCENT TRIM ELEMENT
- 15 WOOD SLATTED MECHANICAL SCREEN
- 16 HEADER ACCENT
- 17 TILE ROOF
- 18 TILE ACCENT
- 19 WOOD TRELLIS
- 20 HORIZONTAL WOOD LATTICE
- 21 GREEN SCREEN CABLE SYSTEM
- 22 ACCENT LIGHT FIXTURES
- 23 ELECTRICAL SWITCHGEAR
- 24 POTENTIAL TENANT SIGNAGE LOCATION

COLORS

- P-1 PARCHMENT A1815 BY GLIDDEN
- P-2 CAMELBACK SW6122 BY SHERWIN-WILLIAMS
- P-3 CANVASBACK A1805 BY GLIDDEN
- P-4 FAIRFAX BROWN SW2856 BY SHERWIN-WILLIAMS
- P-5 ROOKWOOD TERRA COTTA SW2803 BY SHERWIN-WILLIAMS
- AL-1 CLEAR ANODIZED ALUMINUM FRAME
- AL-2 MEDIUM BRONZE ALUMINUM FRAME
- AWG BLACK CHERRY
- M-1 PRE-FINISHED CHAMPAGNE METALLIC
- M-2 PRE-FINISHED GUN METAL
- WM WIRE MESH

FOOTHILL PARTNERS  
REAL ESTATE AND URBAN ECONOMICS

PERKINS, WILLIAMS & COTTERILL  
**A.R.C.H.I.T.E.C.T.S**  
3320 DATA DRIVE, SUITE 200, RANCHO CORDOVA, CA 95670  
916-851-1400 FAX: 916-851-1408  
pwarch@perwillarchitects.com

Elevations - Market

Project: RIO RANCH RETAIL  
Job No. 15313 Date: 5-26-16  
Scale: 1/16" = 1'-0"

Rio Ranch Retail  
Carmel, California