



# TODAY'S ACTION

Consider Approving the Monterey County Water Resources Agency's Fiscal Year 2014-2015 Requested Budget; and, Recommending Approval of the Requested Budget to the Monterey County Water Resources Agency Board of Supervisors.





# Recommendation

The Board Report in your packet does not include WRPCA Budget reductions presented today

- Reduce MRWPCA Requested Budget to minimize Fund Balance burn in Funds: 131,132, and 134.

Discontinue work on Projects that Drain On-going Revenue Streams

- Water Permit Right 11043 needs it's own funding source
- Long-Term Salinas Channel Maintenance needs it's own funding source

Close the \$1.6 M Gap between On-going Revenue & On-going Expenditures

- Evaluate & determine how much Revenue the new PPA will generate in the fiscal year before spending anticipated Revenue
- Minimize Structural Imbalance of \$156,840
- Utilize One-Time Revenues of \$563,288 when received to reduce on-going expenditures before spending it on One-Time Expenditures

Authorize One-time Expenditures **only** when One-time Revenues become available & after all On-going Expenditures have been paid

- Wait until Cal-AM, SRDF Settlement, and Insurance Reimbursement are received and Reserves are replenished



# TODAY'S ACTION

Approve the Monterey County Water Resources Agency's Fiscal Year 2014-2015 Requested Budget; and, Recommend Approval of the Requested Budget to the Monterey County Water Resources Agency Board of Supervisors.







# TODAY'S ACTION

Consider Accepting the Pajaro River Bench Excavation Project Phase II Improvements; and, Authorizing the General Manager to Release any Remaining and Eligible Construction Funds in Compliance with the Cost-share Agreement with Santa Cruz County Flood Control and Water Conservation District, Zone 7.





# Committee Action

- None





# Prior BOD Action

- On March 25, 2013 the Water Resources Agency Board of Directors entered into a cost-share agreement with Santa Cruz County Flood Control and Water Conservation District, Zone 7 for the Pajaro River Bench Excavation Project Phase II and recommended approval to the Monterey County Board of Supervisors.
- On April 22, 2013, the Water Resources Agency Board of Directors ratified an executed Funding Agreement between Monterey County Water Resources Agency and Monterey County, addressing a funding shortfall.





# Financial Impact

- \$1,513,635 [fully reimbursable]:
  - Zone 1
  - Monterey County





# Discussion

- Monterey County Water Resources Agency (Agency) and Santa Cruz Flood Control and Water Conservation District, Zone 7 (District) have jointly participated in the Pajaro River Bench Excavation Project, Phases I and II.
- California Department of Water Resources (DWR) awarded both agencies a Proposition 50 (\$4.6 million) and Proposition 84 Grant (\$2.9 million) for design and construction a combined amount of \$7.5 million.
- Phase I construction was completed in October 2012 at a cost of \$1.9 million. The Agency was fully reimbursed in the amount of \$934,707.37.

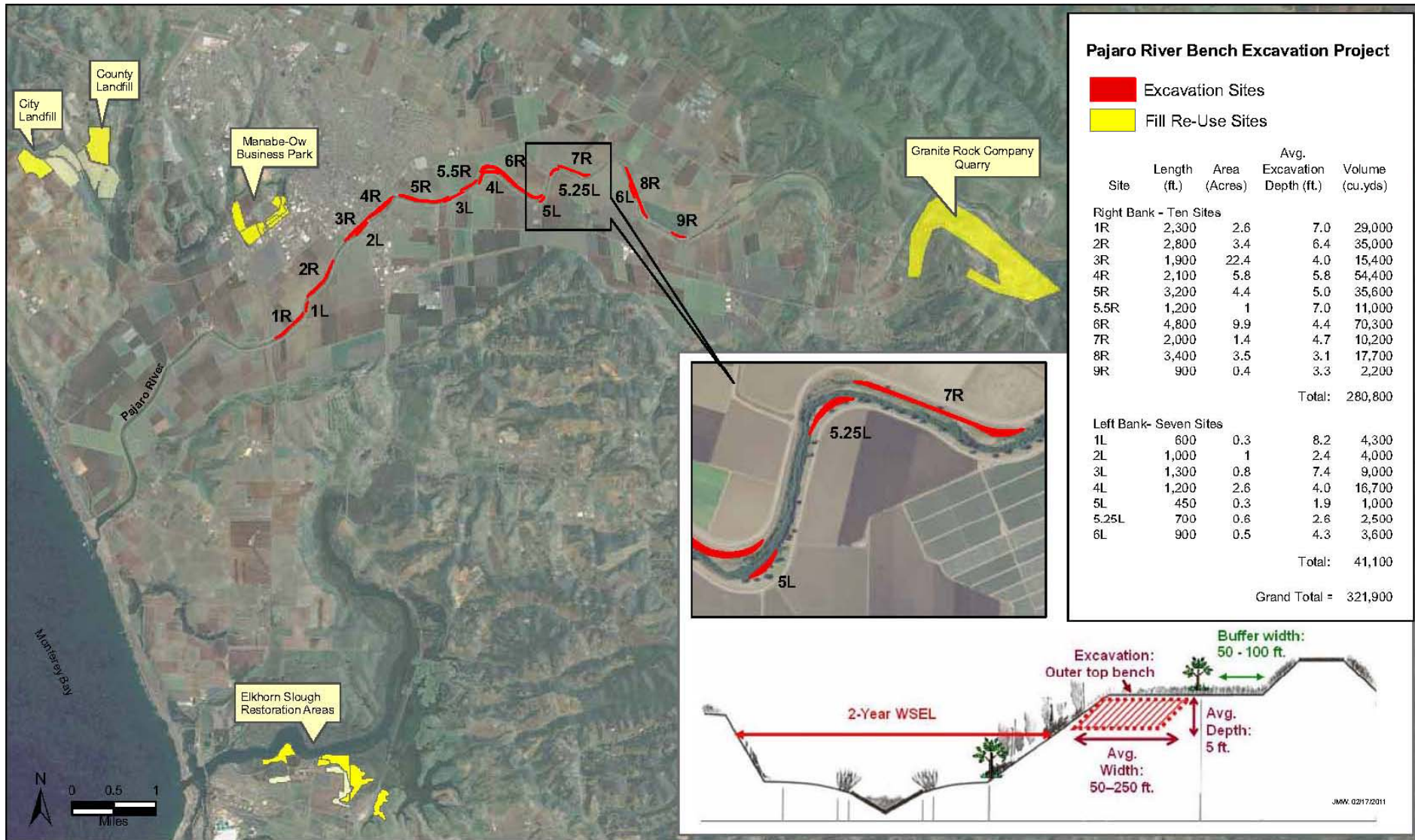


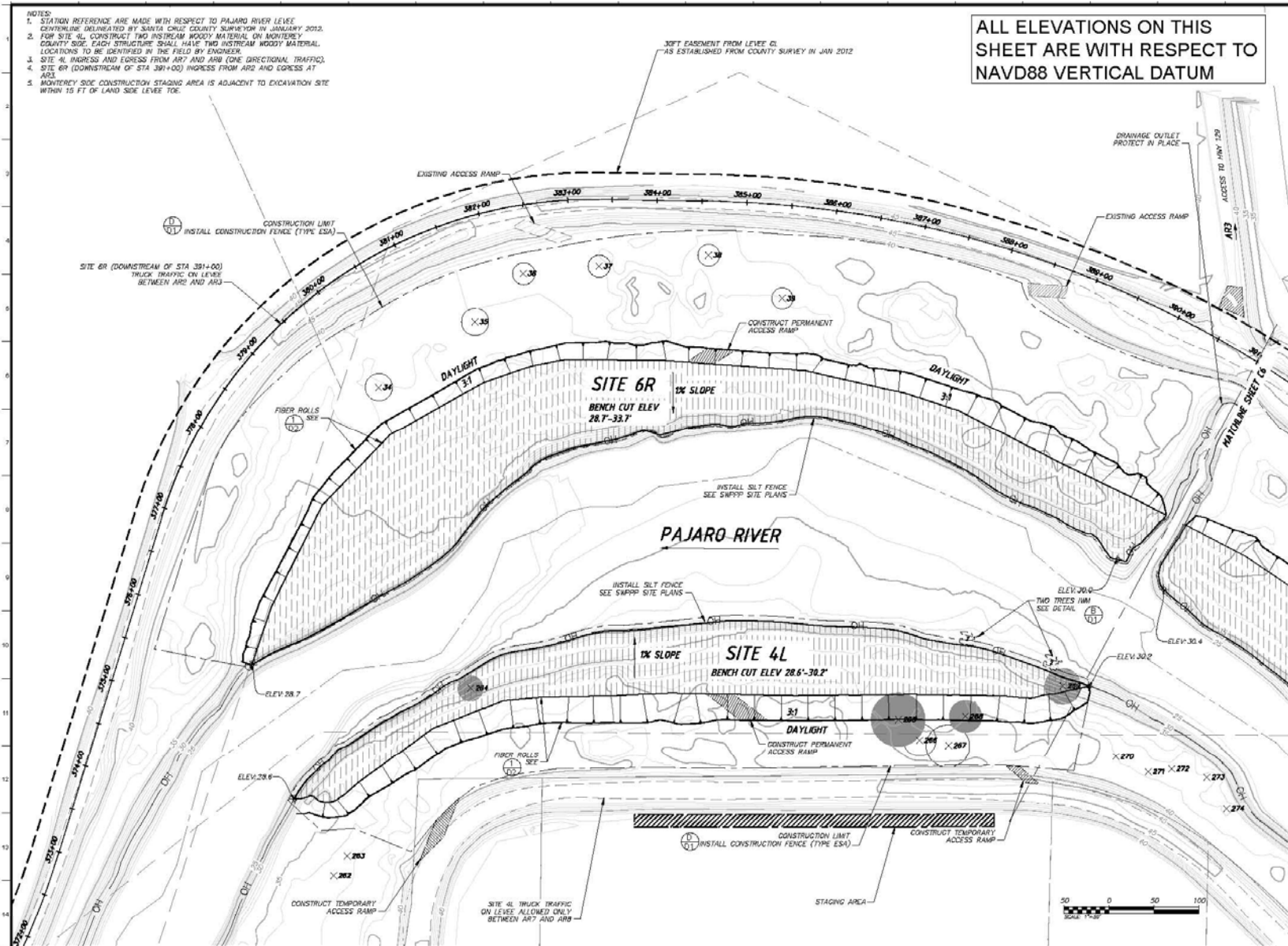


## Discussion (cont.)

- Phase II involved excavating 153,000 cubic yards of excess sediment from select locations along the upper terrace benches inside the Pajaro River levee.
- Granite Rock Company dba Pavex Construction Division submitted the low bid and was awarded the contract at \$3,913,665.18 (includes work on Salsipuedes Creek, no contribution from the Agency). The Agency's 50% share for work on the river mainstem is \$1,513,635 excluding a 10% construction contingency.







**ALL ELEVATIONS ON THIS SHEET ARE WITH RESPECT TO NAVD88 VERTICAL DATUM**

- NOTES:**
1. STATION REFERENCE ARE MADE WITH RESPECT TO PAJARO RIVER LEVEE CENTERLINE DELINEATED BY SANTA CRUZ COUNTY SURVEYOR IN JANUARY 2012.
  2. FOR SITE 4L CONSTRUCT TWO INSTREAM WOODY MATERIAL ON MONTEREY COUNTY SIDE. EACH STRUCTURE SHALL HAVE TWO INSTREAM WOODY MATERIAL LOCATIONS TO BE IDENTIFIED IN THE FIELD BY ENGINEER.
  3. SITE 4L INGRESS AND EGRESS FROM AR7 AND AR8 (ONE DIRECTIONAL TRAFFIC).
  4. SITE 6R (DOWNSTREAM OF STA. 391+00) INGRESS FROM AR8 AND EGRESS AT AR8.
  5. MONTEREY SOC CONSTRUCTION STAGING AREA IS ADJACENT TO EXCAVATION SITE WITHIN 15 FT OF LAND SIDE LEVEE TOE.

**Project:**  
**PAJARO RIVER BENCH EXCAVATION**  
**PHASE 2: SITES 5R, 6R, 7R, 8R, AND 4L AND SALSIPUEDES CREEK LEVEE RESTORATION**

**Client / Agency:**  
 Santa Cruz County  
 Dept of Public Works, Flood Control Engineering  
 707 Ocean Street, Room 410  
 Santa Cruz, CA 95060

**nbc**  
 northwest hydraulic consultants  
 3900 Industrial Boulevard, Suite 1000  
 West Sacramento, California 95691-6508  
 phone: (916) 371-7400  
 fax: (916) 371-7478  
 www.nbcws.com

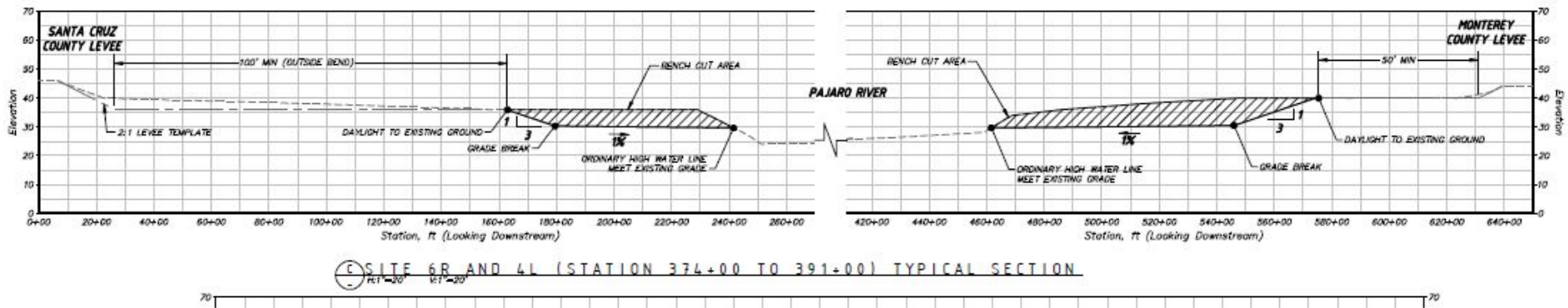


ISSUE		
No.	Date	Description

Supervisor [Signature]	Designer JP	Author JP	Checked [Signature]
Date 01/24/15	Drawing Name Site 6R and 4L Plan Sheet (Station 374+00 to 391+00)		

Reference North	Job Number 000049
Sheet Size 11x17	Sheet Number C-P5
2 of 22 Sheets	

















## Discussion (cont.)

- The project was completed on October 7, 2013 ahead of schedule. The District accepted the improvements and filed a Notice of Completion on January 28, 2014.
- Staff conducted a final inspection of the project and recommends acceptance of the improvements.
- Agency has paid to date \$1,333,011.79 and has been reimbursed \$1,126,855.69 from DWR.
- Monterey County and Agency will be fully reimbursed for the entire Bench Excavation Project.





# TODAY'S ACTION

Accept the Pajaro River Bench Excavation Project Phase II Improvements; and, Authorize the General Manager to Release any Remaining and Eligible Construction Funds in Compliance with the Cost-share Agreement with Santa Cruz County Flood Control and Water Conservation District, Zone 7.







# TODAY'S ACTION

Consider Providing Direction to Staff on Reducing the Minimum Release Criterion from Nacimiento Reservoir from 60 Cubic Feet Per Second to 25 Cubic Feet Per Second.





# Previous Board Action

- At their February 24, 2014 meeting the Board directed staff to not operate the Salinas River Diversion Facility (SRDF) for the 2014 irrigation season, subject to review at the March 5, 2014 Reservoir Operations Committee Meeting





# Committee Action

- On March 5, 2014 the Reservoir Operations Committee unanimously passed a motion for the Agency to not operate the SRDF for the 2014 irrigation season (April through October)



# Committee Action

- Also at the March 5<sup>th</sup> Reservoir Operations Committee meeting, the Committee requested Agency staff to make a formal recommendation to National Marine Fisheries Service (NMFS) to allow the reduction in the minimum flow criterion from Nacimiento Reservoir from 60 cfs to 25 cfs







# Staff Action

- On March 18, 2014 the Agency sent a letter to NMFS formally requesting that, in accordance with the “Salinas Valley Water Project Flow Prescription for Steelhead Trout in the Salinas River” NMFS allow the reduction in the minimum flow criterion from Nacimiento Reservoir from 60 cfs to 25 cfs
- As of this report, a response from NMFS has not been received





# Discussion

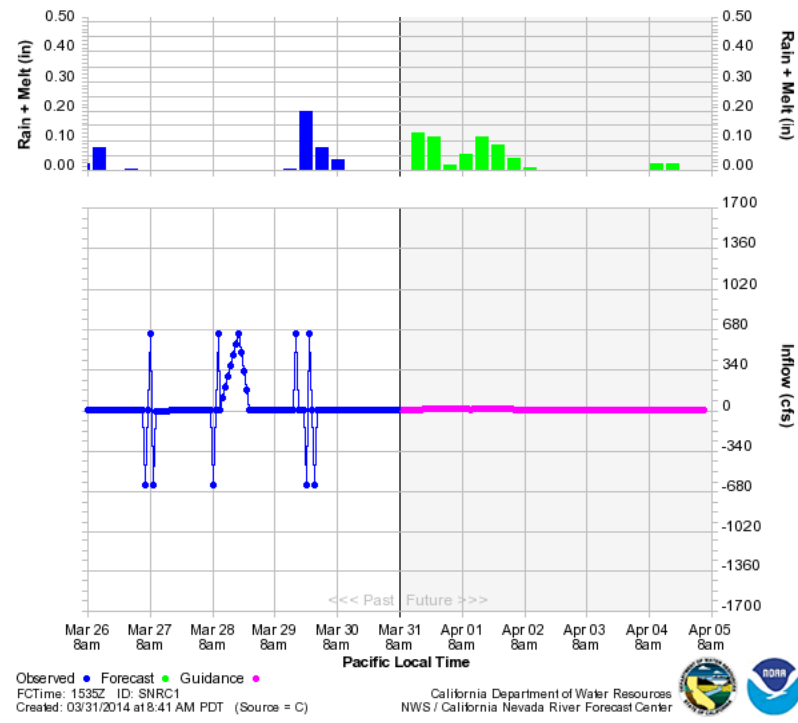
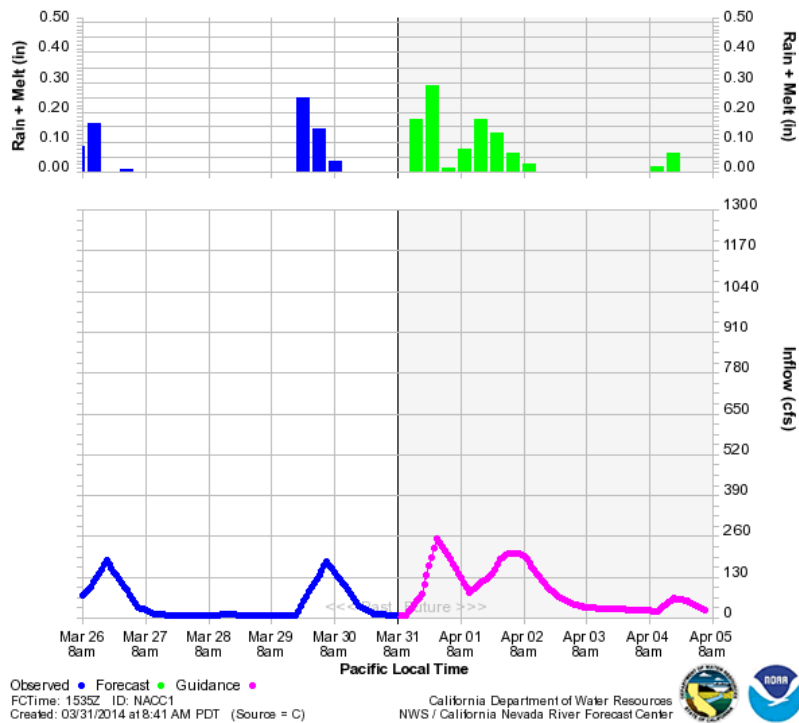
- Last weekends storm system resulted in rainfall of approximately 0.45 inches in Salinas and less than 1 inch in the upper watershed
  - No significant reservoir inflow was generated by this system
- Rainfall forecasted for early April will not likely result in meaningful inflow to Nacimiento or San Antonio Reservoirs



# Discussion (cont.)

Reservoir Inflow:  
Nacimiento Reservoir

San Antonio Reservoir





# Discussion (cont.)

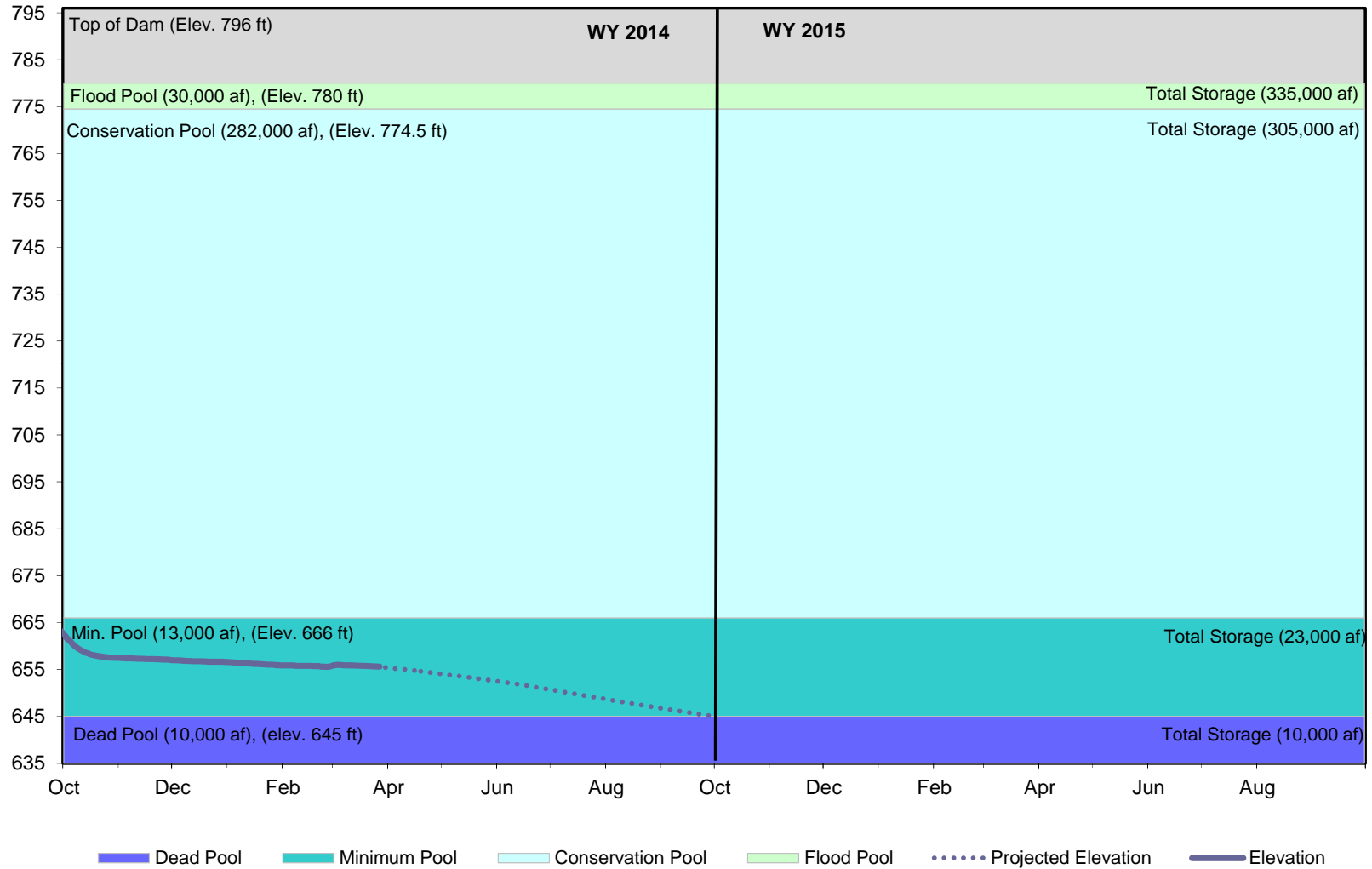
## 2014 Reservoir Release Strategy

- San Antonio Reservoir
  - Water surface elevation at elevation 653' allows for required maintenance on the intake structure
  - Water surface elevation at dead pool will allow for the completion of all recommended maintenance on the intake structure
  - Forecast approximately 184 days to dead pool at the current release rate of 10 cfs
    - Last Week in September



## Projected San Antonio Reservoir Elevation

March 28th Projection





# Discussion (cont.)

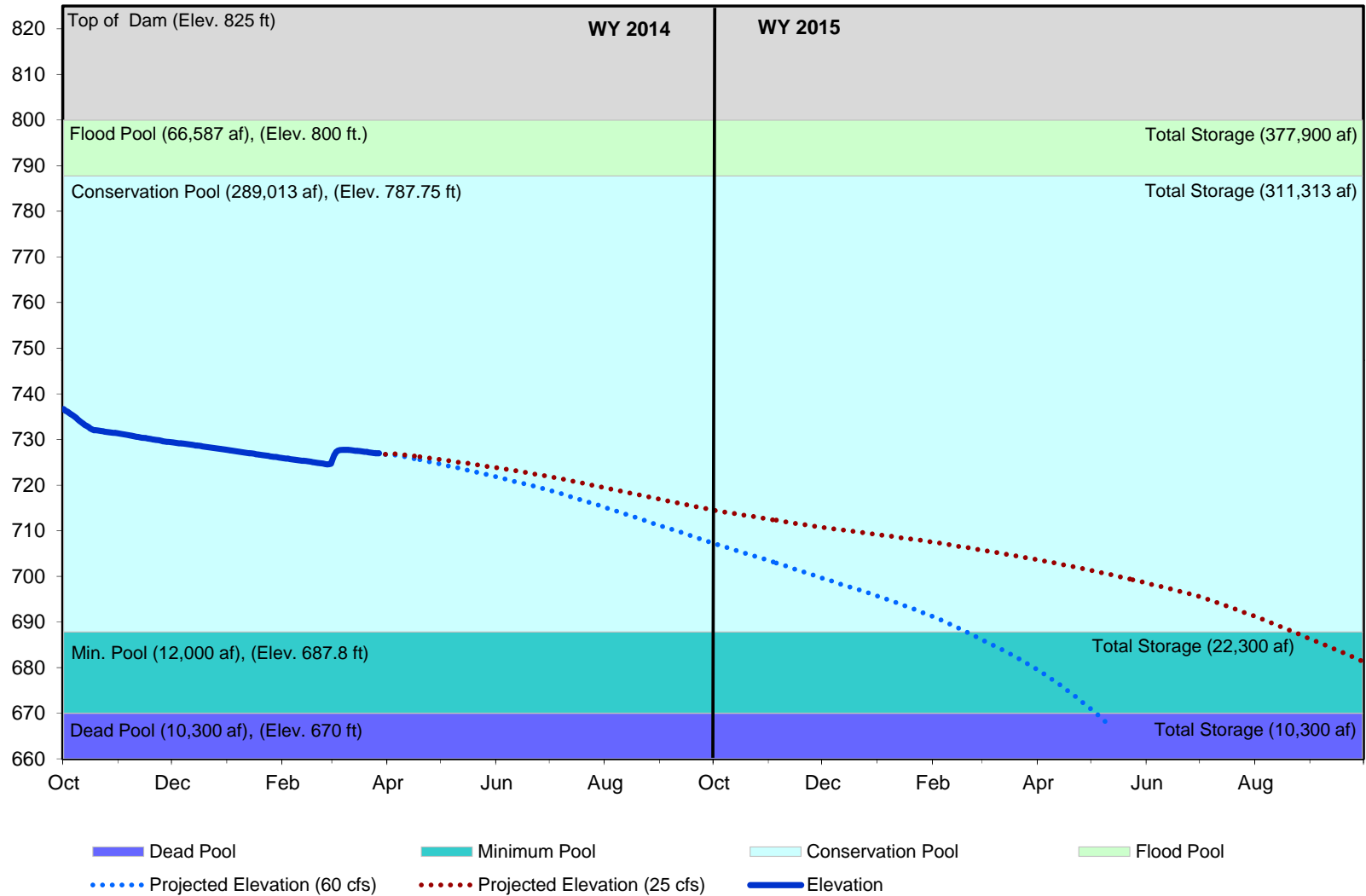
## 2014 Reservoir Release Strategy

- Nacimiento Reservoir Forecast
  - 60 cfs releases reach minimum pool in 325 days
    - Mid-February, 2015
  - 25 cfs releases reach minimum pool in 509 days
    - Early September 2015
  - Forecast does not include inflow for Winter 2014-2015



## Projected Nacimiento Reservoir Elevation

March 28th Projection





# TODAY'S ACTION

Provide Direction to Staff on Reducing the Minimum Release Criterion from Nacimiento Reservoir from 60 Cubic Feet Per Second to 25 Cubic Feet Per Second.

