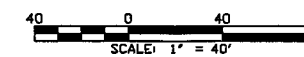


NOTES:
 1. AERIAL BACKGROUND PROVIDED FROM ATLAS LAND SURVEYS, INC. 2008.
 2. EXISTING ROADWAY SHOWN IS BASED ON TOPOGRAPHY SURVEY PERFORMED BY ATLAS LAND SURVEYS, INC., 2008.

LEGEND:

- = NEW PAVEMENT
- = NEW SIGN
- = NEW DELINEATOR

- XXXX = PHASE 1 IMPROVEMENTS
- XXXX = PHASE 2 IMPROVEMENTS
- XXXX = PHASE 3 IMPROVEMENTS
- XXXX = PHASE 4 IMPROVEMENTS



REVISION

SURVEYED BY	DAN/AMP
DRAWN BY	DAN
DATE	8/18/08
DAVID A. MACHAZEL	SURVEYOR
PLSP#	7888

DATE: 12/31/2008

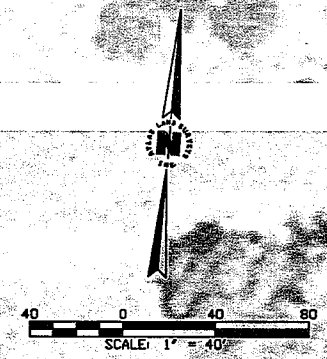
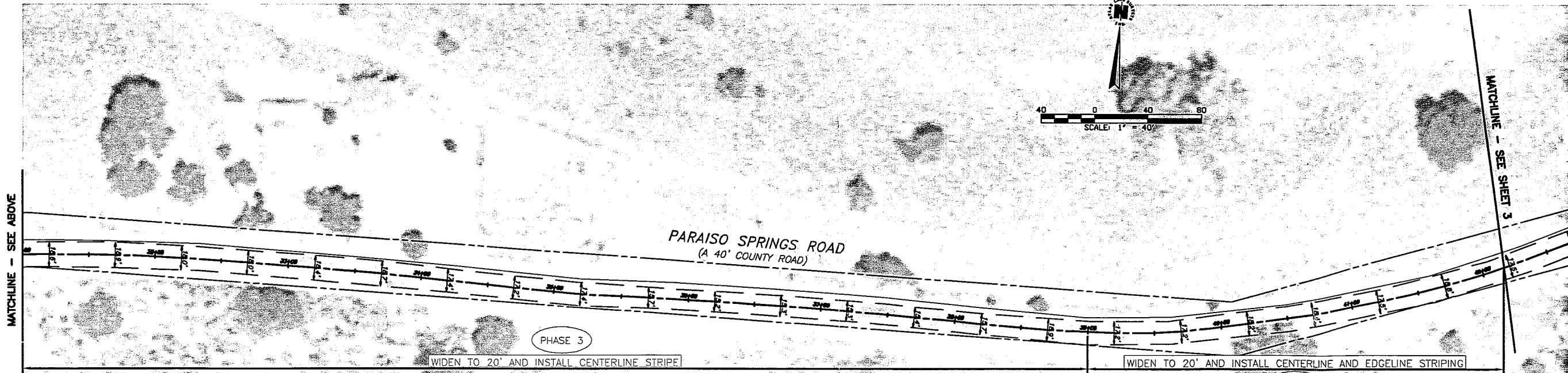
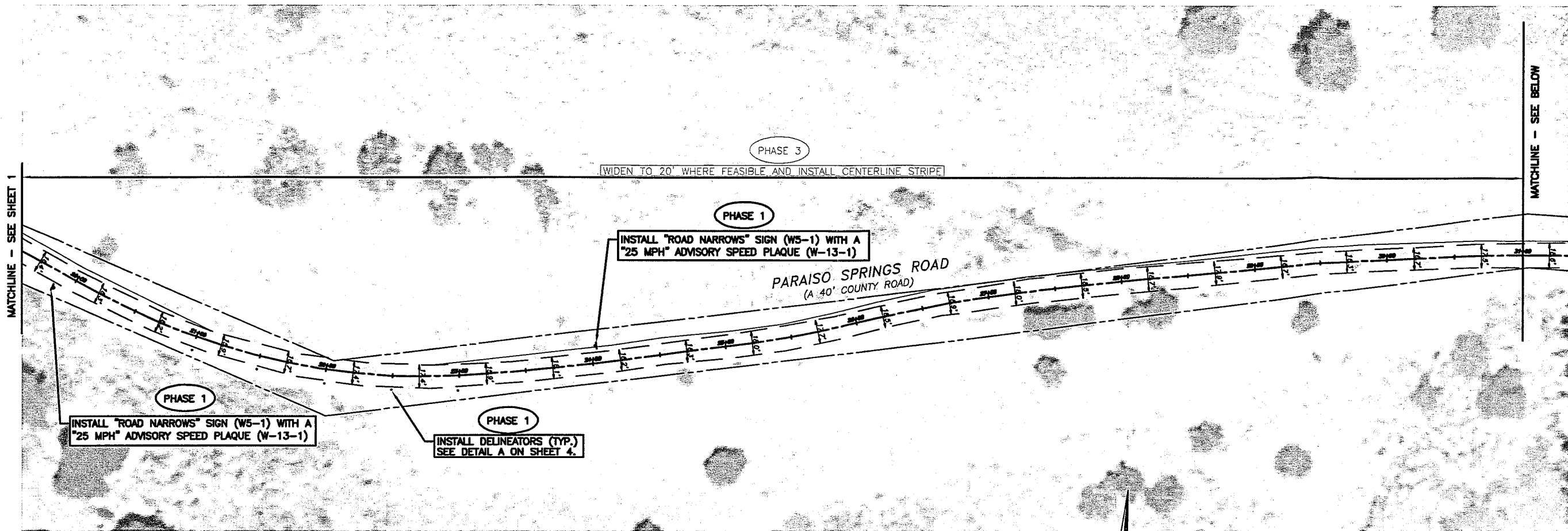
Atlas Land Surveys, Inc.
 75 4th Street, P.O. Box 7131
 Spreckels, CA 93962-7131
 (phone) 831-455-8569 (fax) 831-214-6170 (cell)
 atlasurveys@sbcglobal.net

PREPARED FOR: JOHN & BILL THOMPSON

PARAISO SPRINGS ROAD
EXHIBIT OF PROPOSED IMPROVEMENTS
STATION 0+00 - 20+00

COUNTY OF MONTEREY
 CALIFORNIA

SCALE: 1" = 40'
 DATE: 12/9/2011
 SHEET: 1 OF 4
 JOB: Thompson-Paraiso



NOTES:
 1. AERIAL BACKGROUND PROVIDED FROM ATLAS LAND SURVEYS, INC. 2008.
 2. EXISTING ROADWAY SHOWN IS BASED ON TOPOGRAPHY SURVEY PERFORMED BY ATLAS LAND SURVEYS, INC., 2008.

LEGEND:

- = NEW PAVEMENT
- = NEW SIGN
- = NEW DELINEATOR
- XXXX = PHASE 1 IMPROVEMENTS
- XXXX = PHASE 2 IMPROVEMENTS
- XXXX = PHASE 3 IMPROVEMENTS
- XXXX = PHASE 4 IMPROVEMENTS

REVISIONS

SURVEYED BY	DAV/AMP
DRAWN BY	DAV
DATE	8/18/08
DAVID A. MACHAZEL SURVEYOR	
PLSP: 7888	

DATE: 12/31/2008

Atlas Land Surveys, Inc.
 75 4th Street, P.O. Box 7131
 Spretels, CA 93962-7131
 831-455-9553 (phone) 831-455-8569 (fax) 831-214-6170 (cell)
 atlasurveys@sbcglobal.net

PREPARED FOR: JOHN & GILL THOMPSON

PARAISO SPRINGS ROAD
EXHIBIT OF PROPOSED IMPROVEMENTS
STATION 20+00 - 43+00

COUNTY OF MONTEREY CALIFORNIA

SCALE: 1" = 40'
 DATE: 12/9/2011
 SHEET: 2 OF 4
 JOB: Thompson-Paraiso

MATCHLINE - SEE SHEET 2

MATCHLINE - SEE BELOW

PARAISO SPRINGS ROAD
(A 40' COUNTY ROAD)

PHASE 4

WIDEN TO 20' AND INSTALL CENTERLINE AND EDGELINE STRIPING

MATCHLINE - SEE ABOVE

MATCHLINE - SEE SHEET 4

PHASE 4

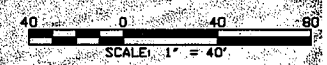
WIDEN TO 20' AND INSTALL CENTERLINE AND EDGELINE STRIPING

PARAISO SPRINGS ROAD
(A 40' COUNTY ROAD)

LEGEND:

- = NEW PAVEMENT
- XXXX = PHASE 1 IMPROVEMENTS
- XXXX = PHASE 2 IMPROVEMENTS
- XXXX = PHASE 3 IMPROVEMENTS
- XXXX = PHASE 4 IMPROVEMENTS

NOTES:
 1. AERIAL BACKGROUND PROVIDED FROM ATLAS LAND SURVEYS, INC. 2008.
 2. EXISTING ROADWAY SHOWN IS BASED ON TOPOGRAPHY SURVEY PERFORMED BY ATLAS LAND SURVEYS, INC., 2008.



REVISED

SURVEYED BY	DAN/NIP
DRAWN BY	DAN
DATE	8/18/08
DAVID A. NACHAZEL	SURVEYOR
PL#	7888

EXP. 12/31/2008

Atlas Land Surveys, Inc.
 75 4th Street, P.O. Box 7131
 Spreckels, CA 93962-7131
 (phone) 831-455-8569 (fax) 831-214-6170 (cell)
 atlasurveys@sbcglobal.net

PREPARED FOR: JOHN & BILL THOMPSON

PARAISO SPRINGS ROAD
 EXHIBIT OF PROPOSED IMPROVEMENTS
 STATION 43+00 - 65+00

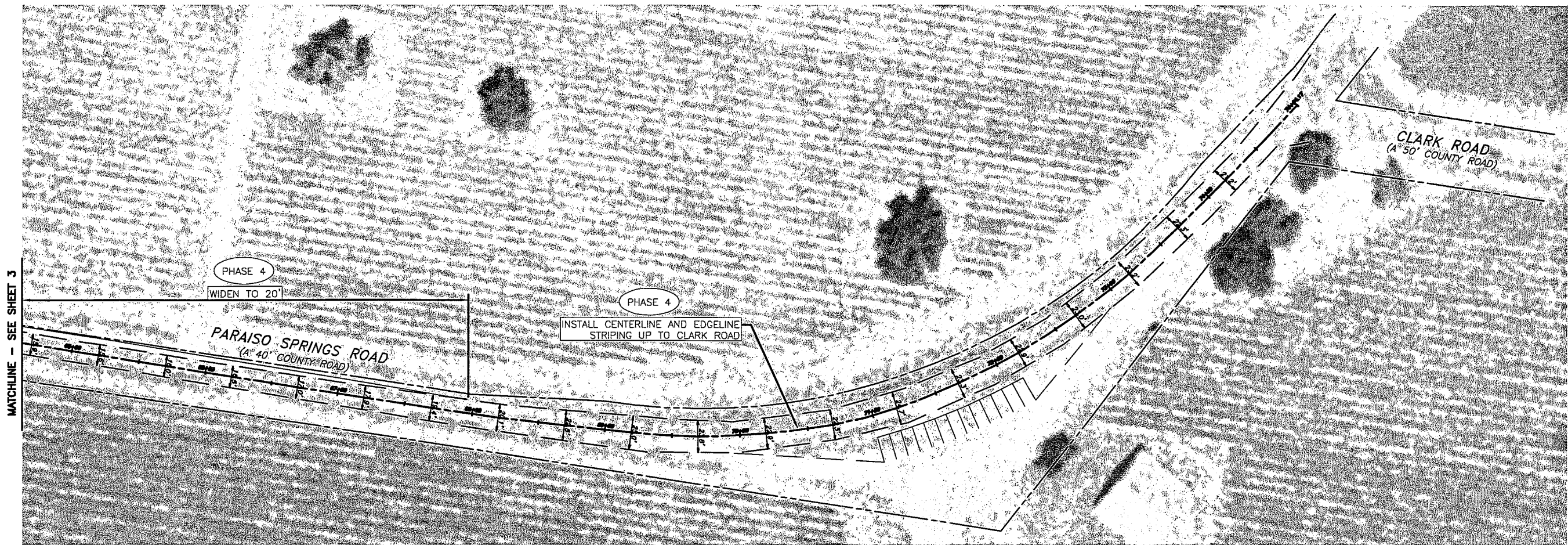
COUNTY OF MONTEREY CALIFORNIA

SCALE: 1" = 40'

DATE: 12/9/2011

SHEET: 3 OF 4

JOB: Thompson-Paraiso



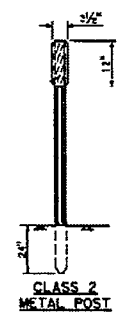
MATCHLINE - SEE SHEET 3

PHASE 4
WIDEN TO 20'

PHASE 4
INSTALL CENTERLINE AND EDGELINE STRIPING UP TO CLARK ROAD

PARAISO SPRINGS ROAD
(A 40' COUNTY ROAD)

CLARK ROAD
(A 50' COUNTY ROAD)

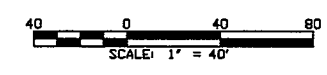
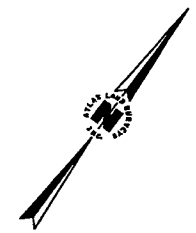


DETAIL A: DELINEATOR

LEGEND:

- = NEW PAVEMENT
- XXXX = PHASE 1 IMPROVEMENTS
- XXXX = PHASE 2 IMPROVEMENTS
- XXXX = PHASE 3 IMPROVEMENTS
- XXXX = PHASE 4 IMPROVEMENTS

NOTES:
 1. AERIAL BACKGROUND PROVIDED FROM ATLAS LAND SURVEYS, INC. 2008.
 2. EXISTING ROADWAY SHOWN IS BASED ON TOPOGRAPHY SURVEY PERFORMED BY ATLAS LAND SURVEYS, INC., 2008.



REVISIONS

SURVEYED BY DAN/MP
 DRAWN BY DAN
 DATE: 8/18/08
 DAVID A. MACHAZEL
 SURVEYOR
 PLAN: 7088

DATE: 12/31/2008

Atlas Land Surveys, Inc.
 75 4th Street, P.O. Box 7131
 Spreckels, CA 93962-7131
 831-455-9653 (phone) 831-455-8569 (fax) 831-214-6170 (cell)
 atlasurveys@sbcglobal.net

PREPARED FOR: JOHN & BILL THOMPSON

PARAISO SPRINGS ROAD
EXHIBIT OF PROPOSED IMPROVEMENTS
STATION 65+00 - 75+00

COUNTY OF MONTEREY
 CALIFORNIA

SCALE: 1" = 40'

DATE: 12/9/2011

SHEET: 4 OF 4

JOB: Thompson-Paraiso