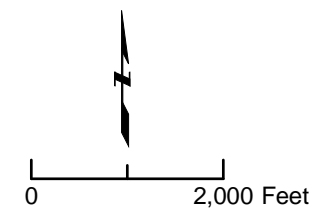


Base Map: U.S. Geological Survey, Monterey and Seaside 7.5-minute quadrangles.

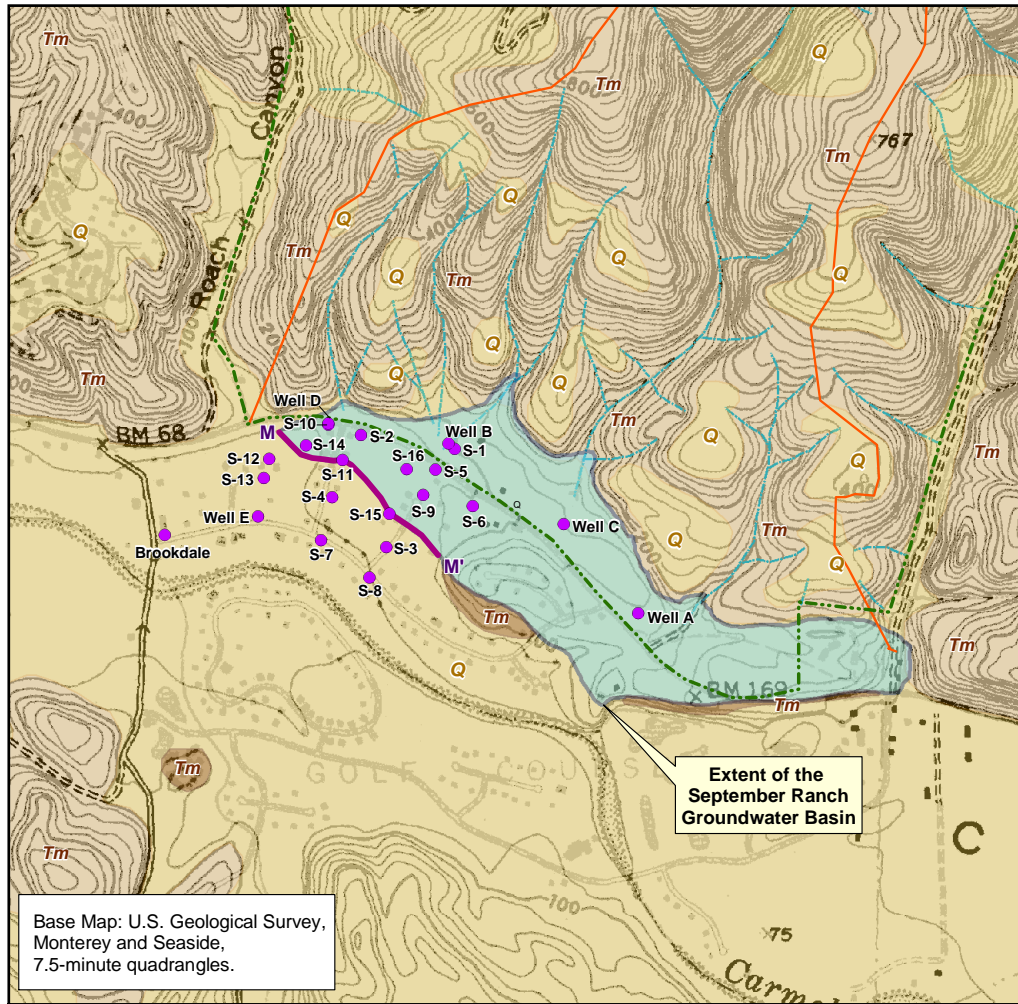
- Explanation**
- September Ranch drainage system
 - Cross-section trace M-M'
 - Carmel Valley Aquifer Subunit 3



Kennedy/Jenks Consultants
 September Ranch
 Carmel Valley, California
Site Setting and Site Vicinity Map

034813.03
 March 2004
Figure 1

H:\September_Ranch\GIS\mxd\04_0205_meetingfigure_1.mxd



Base Map: U.S. Geological Survey, Monterey and Seaside, 7.5-minute quadrangles.

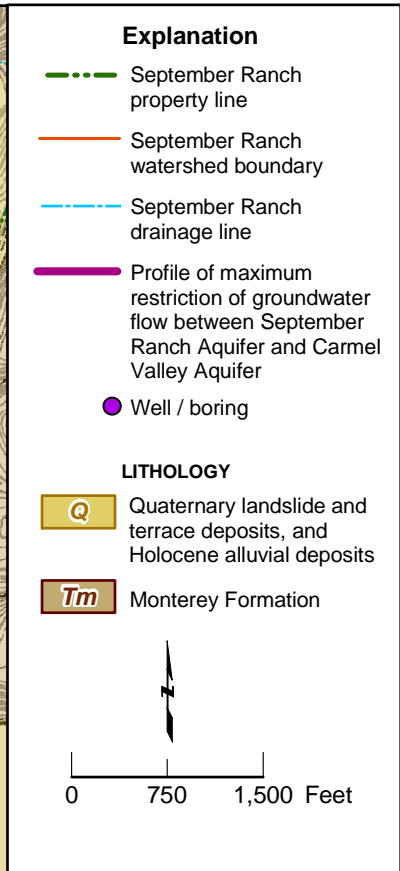


Figure 2a
Site Data and
Cross-section Locations

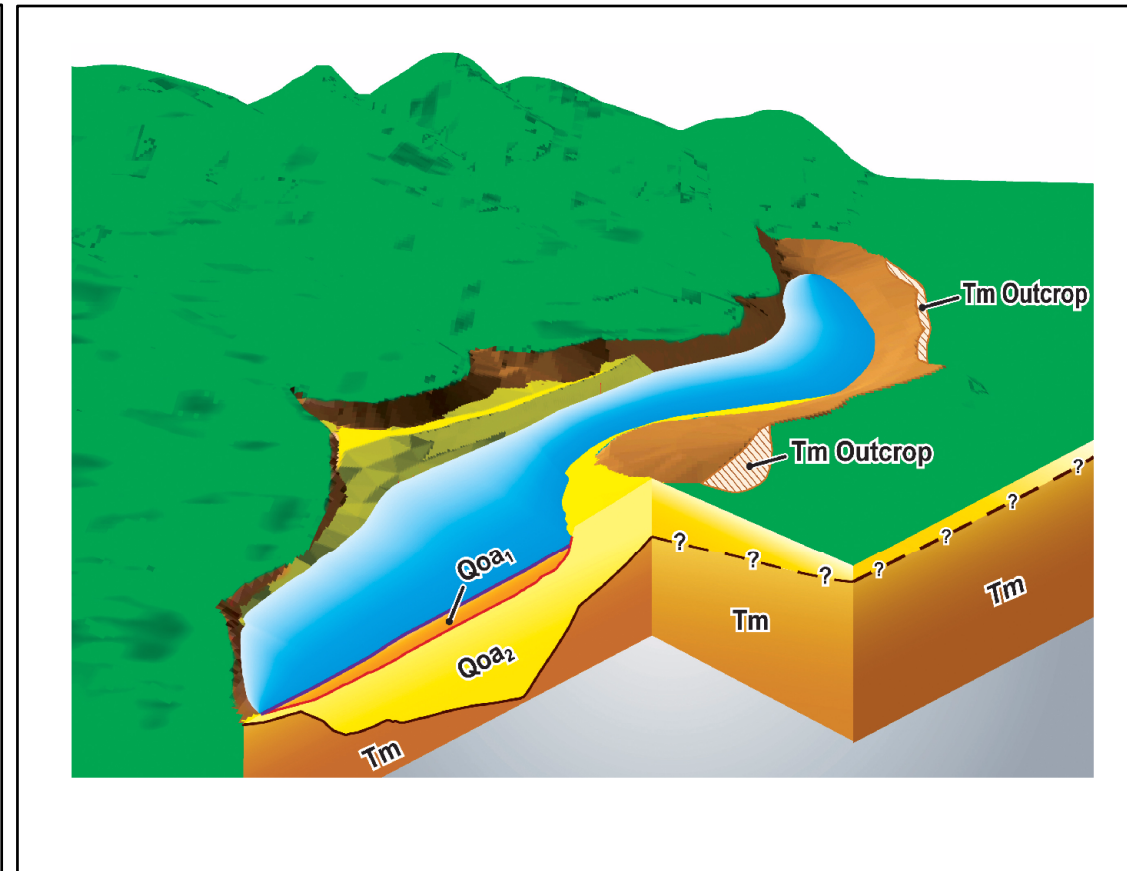


Figure 2b
Site Conceptual
Hydrogeologic Model

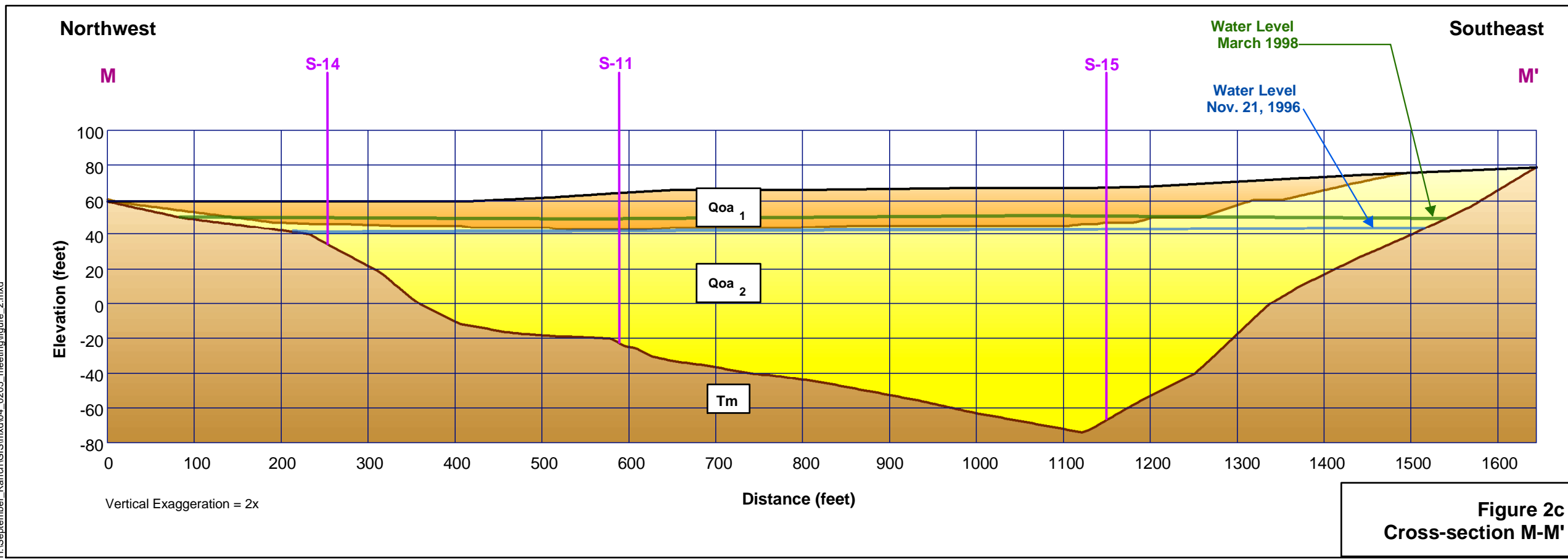


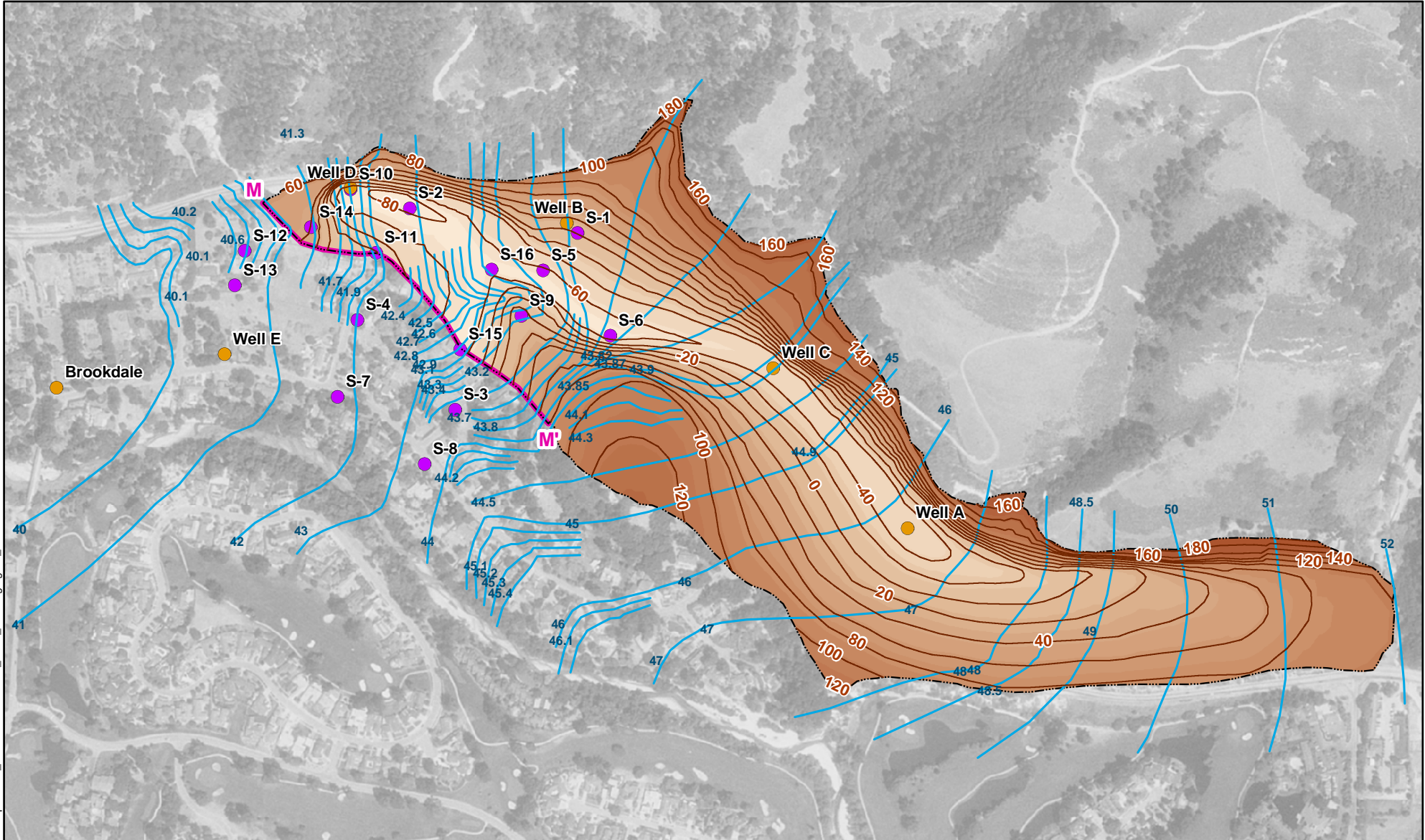
Figure 2c
Cross-section M-M'

Kennedy/Jenks Consultants
September Ranch
Carmel Valley, California
Site Hydrogeology

034813.03
March 2004
Figure 2




H:\September_Ranch\GIS\mxd\04_0205_meetingfigure_2.mxd





H:\September_Ranch\GIS\mxd\04_0205_meetingfigure_3.mxd

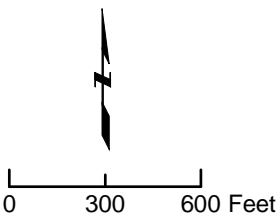


Aerial Photograph: Seaside SW quadrangle, September 7, 1998.

Explanation

-  Top of Monterey Formation, 20-foot contour interval (feet, MSL)
-  Groundwater level contours (feet, MSL), November 21, 1996
-  September Ranch Aquifer boundary

-  Monterey Formation (Tm)
-  Cross-section trace M-M'
-  Well
-  Boring



Kennedy/Jenks Consultants

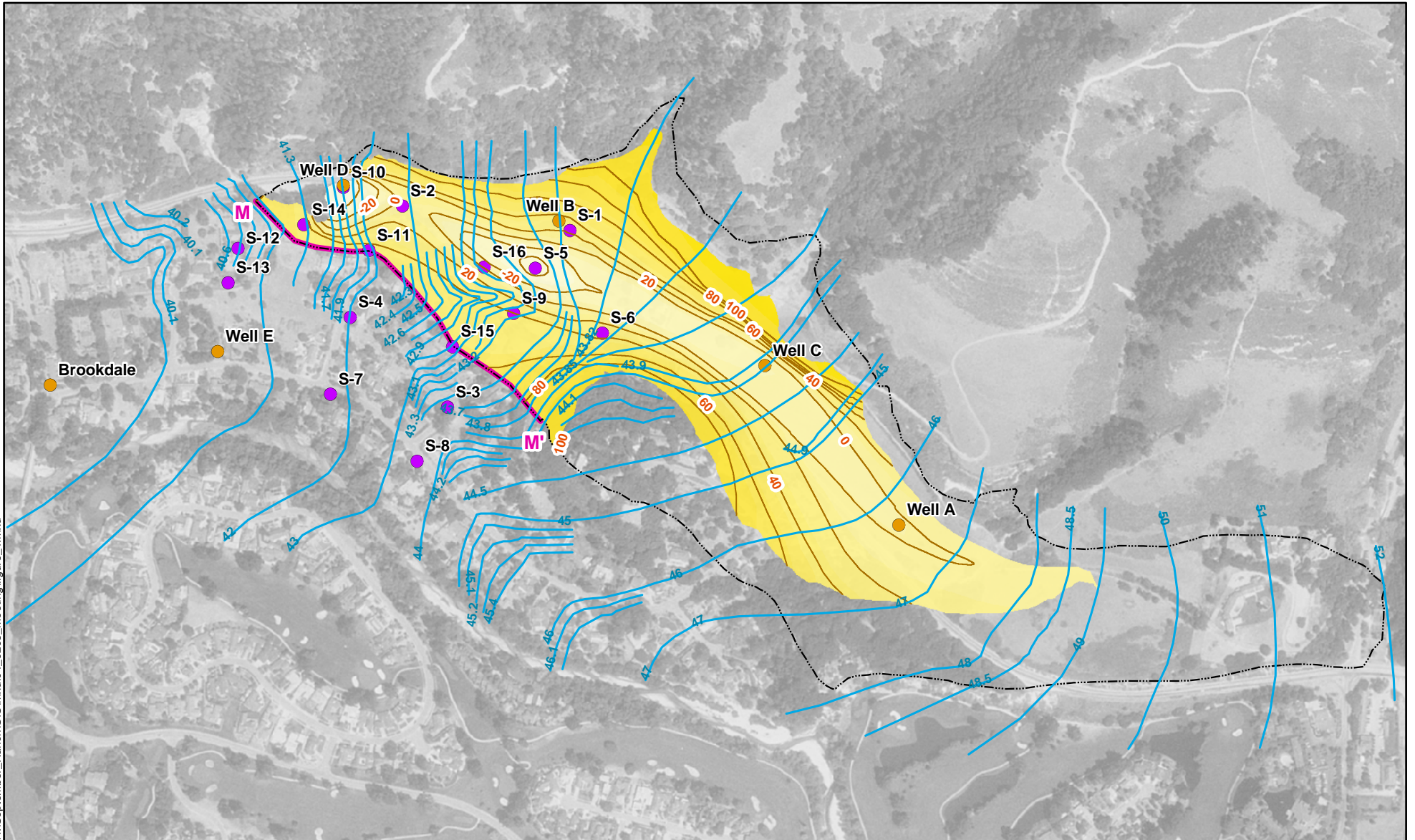
September Ranch
 Carmel Valley, California

**Top of Monterey Formation and
 Groundwater Levels - November 21, 1996**

034813.03
 March 2004








Figure 3

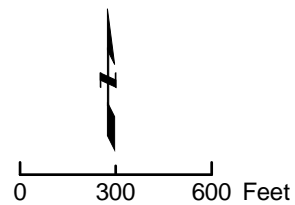
H:\September_Ranch\GIS\mxd\04_0205_meetingfigure_4.mxd



Aerial Photograph: Seaside SW quadrangle, September 7, 1998.

Explanation

-  Top of Qoa2, 20-foot contour interval (feet, MSL)
-  Groundwater level contours (feet, MSL), November 21, 1996
-  September Ranch Aquifer boundary
-  Qoa2
-  Cross-section trace M-M'
-  Well
-  Boring



Kennedy/Jenks Consultants

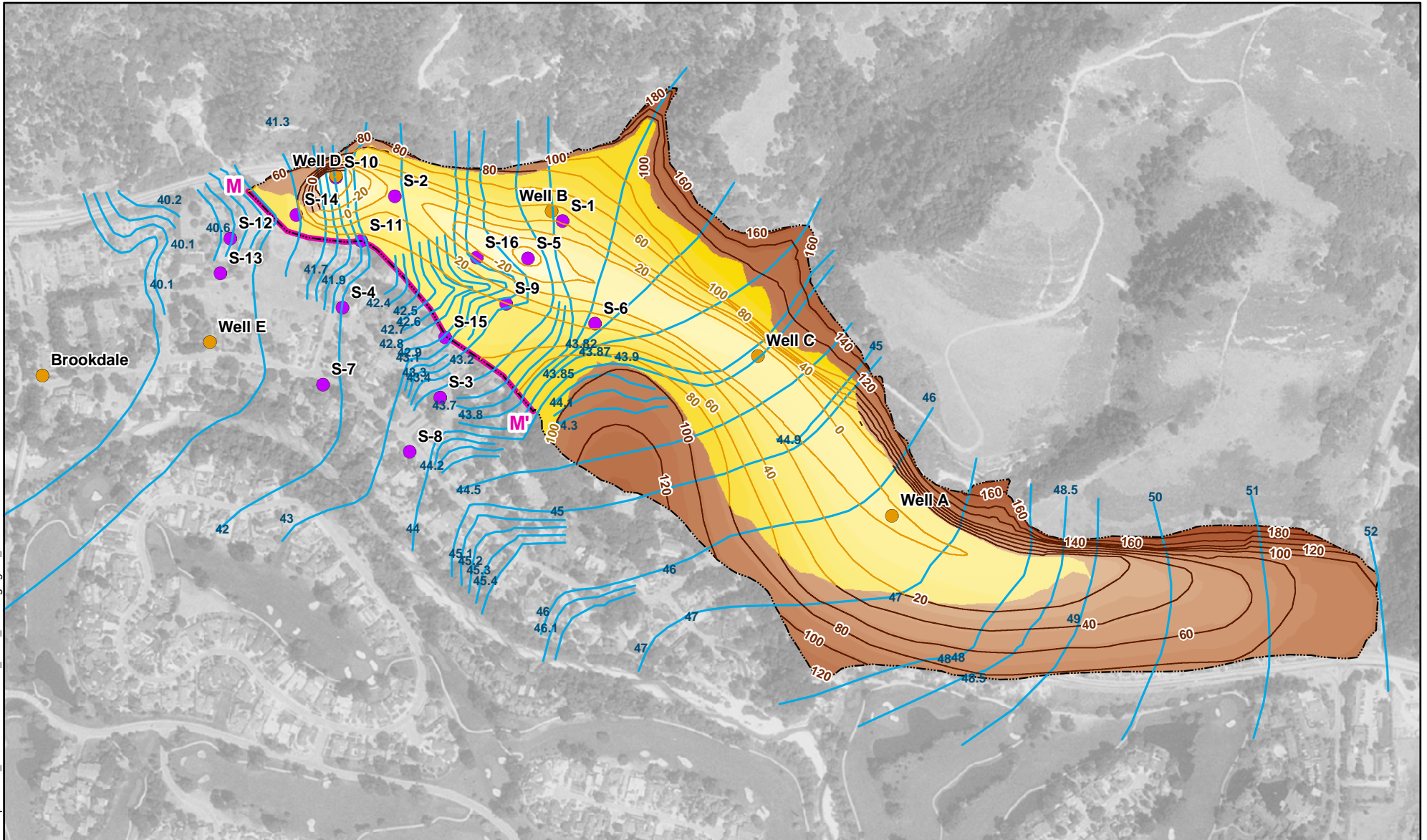
September Ranch
Carmel Valley, California

Top of Older Alluvium - Qoa2 and Groundwater Levels - November 21, 1996

034813.03
March 2004

Figure 4

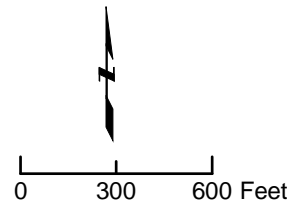
H:\September_Ranch\GIS\mxd\04_0205_meetingfigure_5.mxd



Aerial Photograph: Seaside SW quadrangle, September 7, 1998.

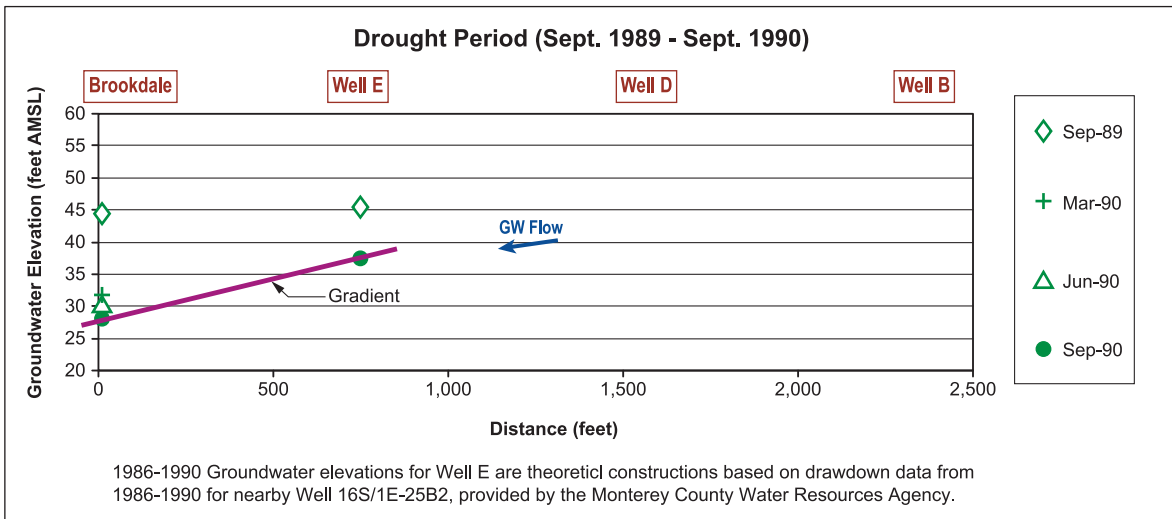
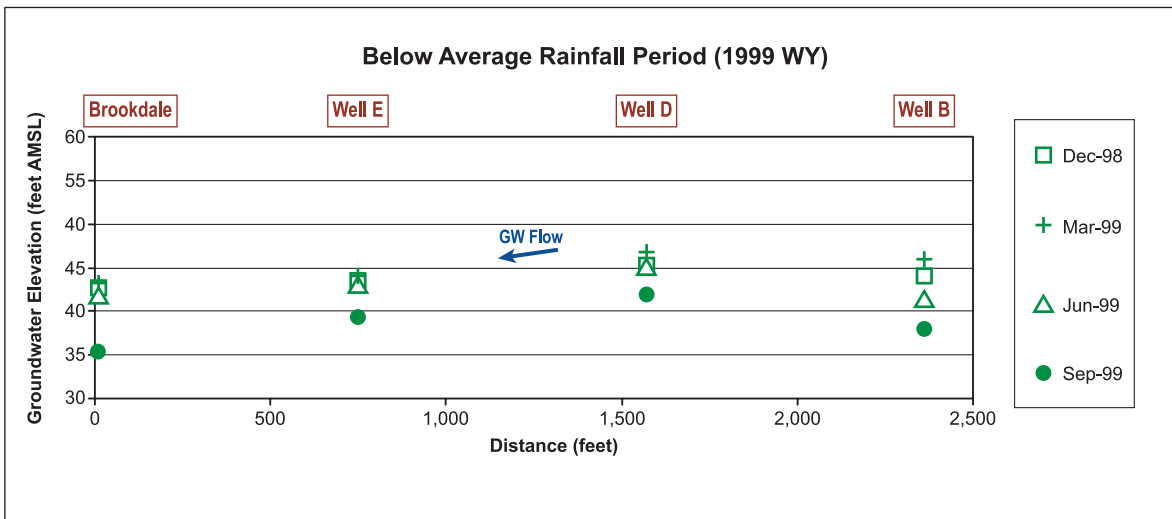
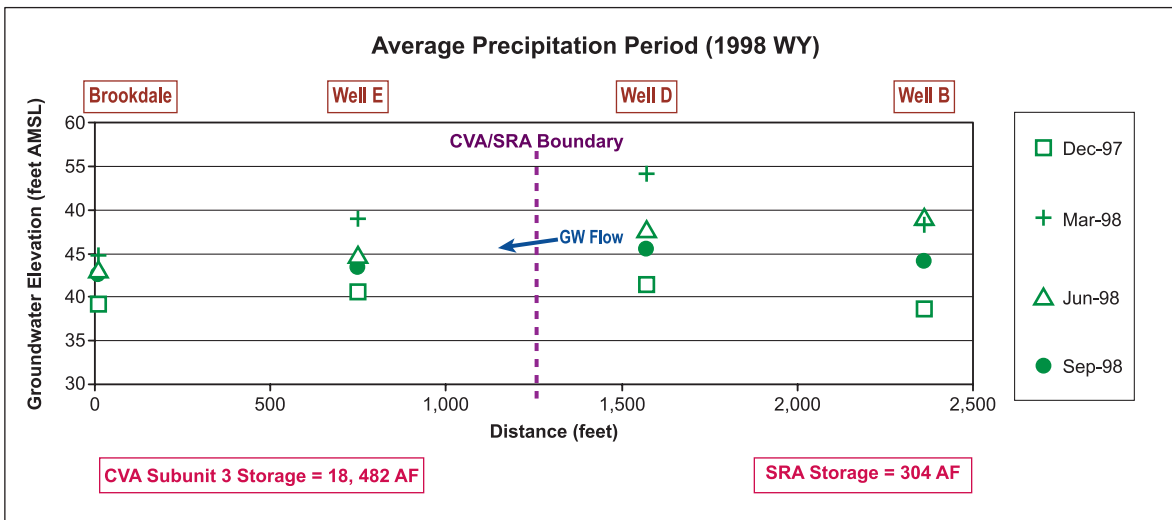
Explanation

- Top of Monterey Formation
20-foot contour interval (feet, MSL)
- Top of Qoa2
20-foot contour interval (feet, MSL)
- Groundwater level contours (feet, MSL),
November 21, 1996
- September Ranch Aquifer boundary
- Monterey Formation (Tm)
- Qoa2
- Cross-section trace M-M'
- Well
- Boring



Kennedy/Jenks Consultants

September Ranch
Carmel Valley, California
**Combined Top of Monterey Formation
and Older Alluvium - Qoa2**
034813.03
February 2004
Figure 5



- Explanation
- CVA** Carmel Valley Aquifer
 - SRA** September Ranch Aquifer
 - GW** Groundwater

Kennedy/Jenks Consultants

September Ranch
Carmel Valley, California

Groundwater Gradients Across Cross-section M-M'

034813.03
March 2004

Figure 6



Explanation

- September Ranch Site Area
- September Ranch Watershed Boundary
- Carmel River Watershed Boundary
- Carmel Valley Groundwater Basin Subunit 1
- Carmel Valley Groundwater Basin Subunit 2
- Carmel Valley Groundwater Basin Subunit 3
- Carmel Valley Groundwater Basin Subunit 4
- Township/Range Boundary
- Section Boundary



Kennedy/Jenks Consultants

September Ranch
Carmel Valley, California

Carmel River Watershed

034813.03
March 2004

Figure 7

H:\September_Ranch\GIS\mxd\04_0205_meeting\CVA_100k_Wrshed02.mxd