

The boundary for the Chualar Community Area will be established at a later date pursuant to LU-2.22.c

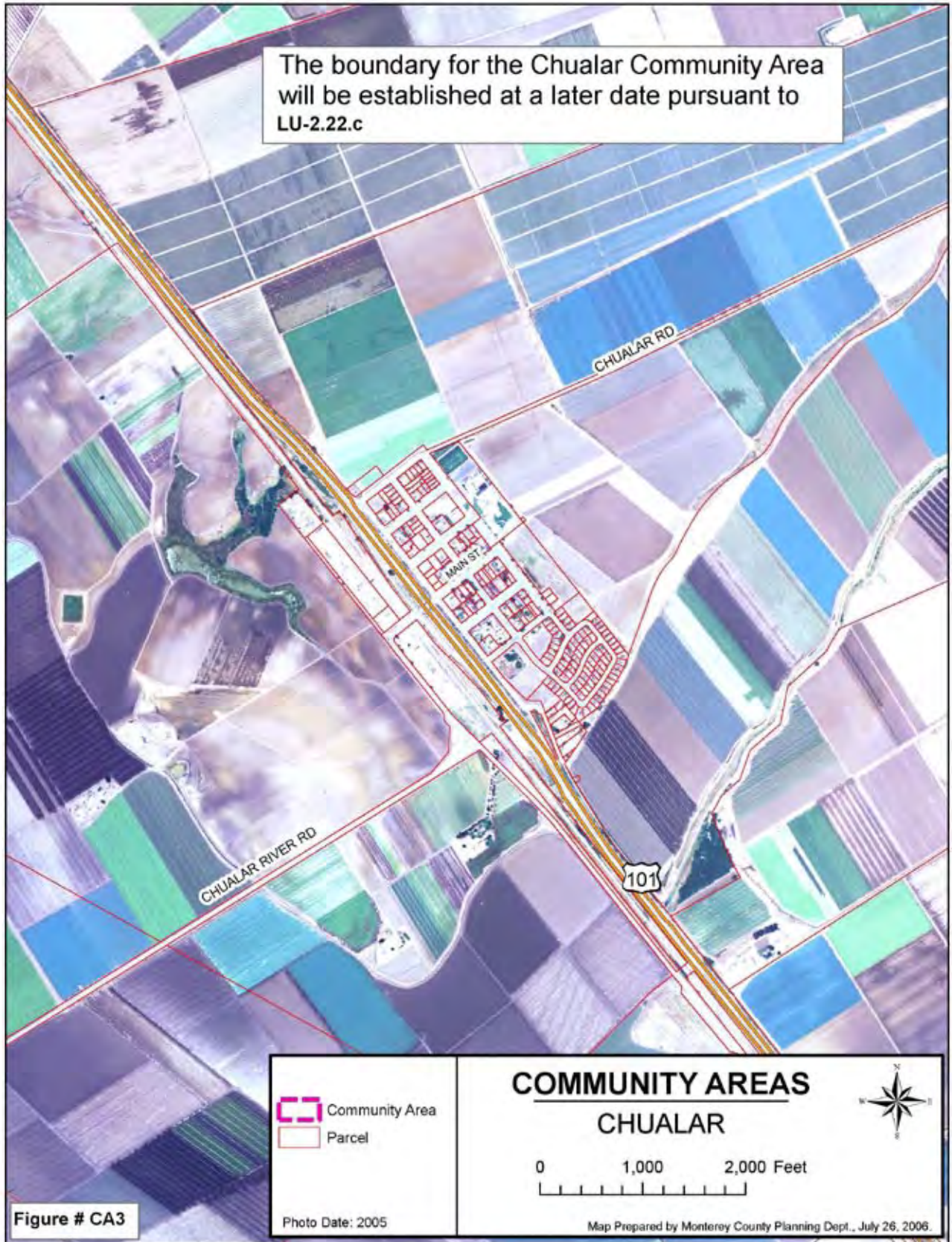


Figure # CA3

Photo Date: 2005

COMMUNITY AREAS CHUALAR

0 1,000 2,000 Feet

Map Prepared by Monterey County Planning Dept., July 26, 2006.

00982.07 (rev. 12-08)