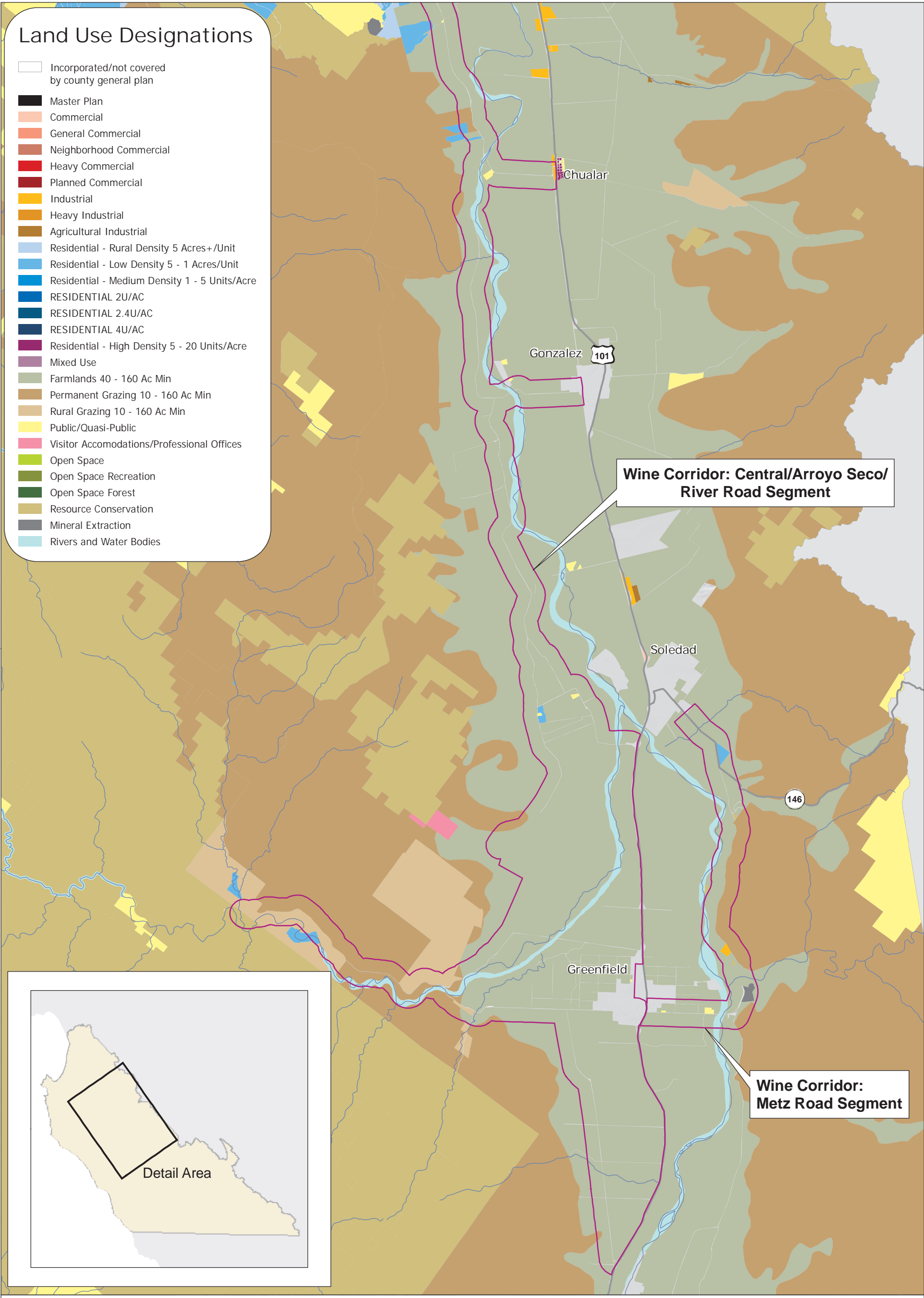


Land Use Designations

- Incorporated/not covered by county general plan
- Master Plan
- Commercial
- General Commercial
- Neighborhood Commercial
- Heavy Commercial
- Planned Commercial
- Industrial
- Heavy Industrial
- Agricultural Industrial
- Residential - Rural Density 5 Acres+/Unit
- Residential - Low Density 5 - 1 Acres/Unit
- Residential - Medium Density 1 - 5 Units/Acre
- RESIDENTIAL 2U/AC
- RESIDENTIAL 2.4U/AC
- RESIDENTIAL 4U/AC
- Residential - High Density 5 - 20 Units/Acre
- Mixed Use
- Farmlands 40 - 160 Ac Min
- Permanent Grazing 10 - 160 Ac Min
- Rural Grazing 10 - 160 Ac Min
- Public/Quasi-Public
- Visitor Accomodations/Professional Offices
- Open Space
- Open Space Recreation
- Open Space Forest
- Resource Conservation
- Mineral Extraction
- Rivers and Water Bodies



Wine Corridor: Central/Arroyo Seco/ River Road Segment

Wine Corridor: Metz Road Segment

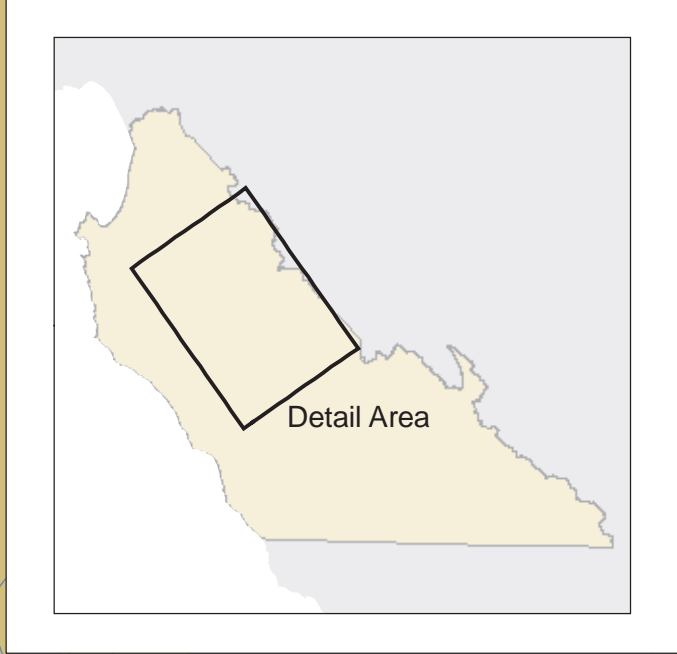


Exhibit 3.2b
General Plan Land Use
Salinas Valley North



Sources: County of Monterey. California Spatial Information Library.

S:\GIS\PROJECTS\COUNTY_OF_MONTEREY\009892_071\MAPDOC\EX3_2b_GP2007_LANDUSE_SALINASVLYN.MXD PG 08-01-08