



MONTEREY COUNTY

Land Use Plan Central Salinas Valley

<ul style="list-style-type: none"> Highway Major Road Minor Road Railroad Water County Boundary Planning Area Coastal Zone Incorporated City Parcel 	<p>Residential</p> <ul style="list-style-type: none"> Residential - Rural Density 5 Acres+/Unit Residential - Low Density 5 - 1 Acres/Unit Residential - Medium Density 1 - 5 Units/Acre Residential - High Density 5 - 20 Units/Acre <p>Commercial</p> <ul style="list-style-type: none"> Commercial Heavy Commercial <p>Industrial</p> <ul style="list-style-type: none"> Visitor Accommodations/Professional Offices Industrial Mineral Extraction 	<p>Agricultural - density indicated in red</p> <ul style="list-style-type: none"> Farmlands 40 Ac Min Rural Grazing 10 - 160 Ac Min Permanent Grazing 40 Ac Min Agricultural Industrial <p>Resource Conservation</p> <ul style="list-style-type: none"> Rivers and Water Bodies Resource Conservation <p>Public/Quasi-Public</p> <ul style="list-style-type: none"> Special Treatment Area Study Area Urban Reserve Community Area Boundary Rural Center Boundary
---	--	--

Map Prepared by: Monterey County Resource Management Agency, October 22, 2007.
Sources: Roads and Railroads = Monterey County IT/GIS, Parcels = Monterey County Assessor, City Limits and Urban Reserve = Monterey County IT/GIS and LAFCO.

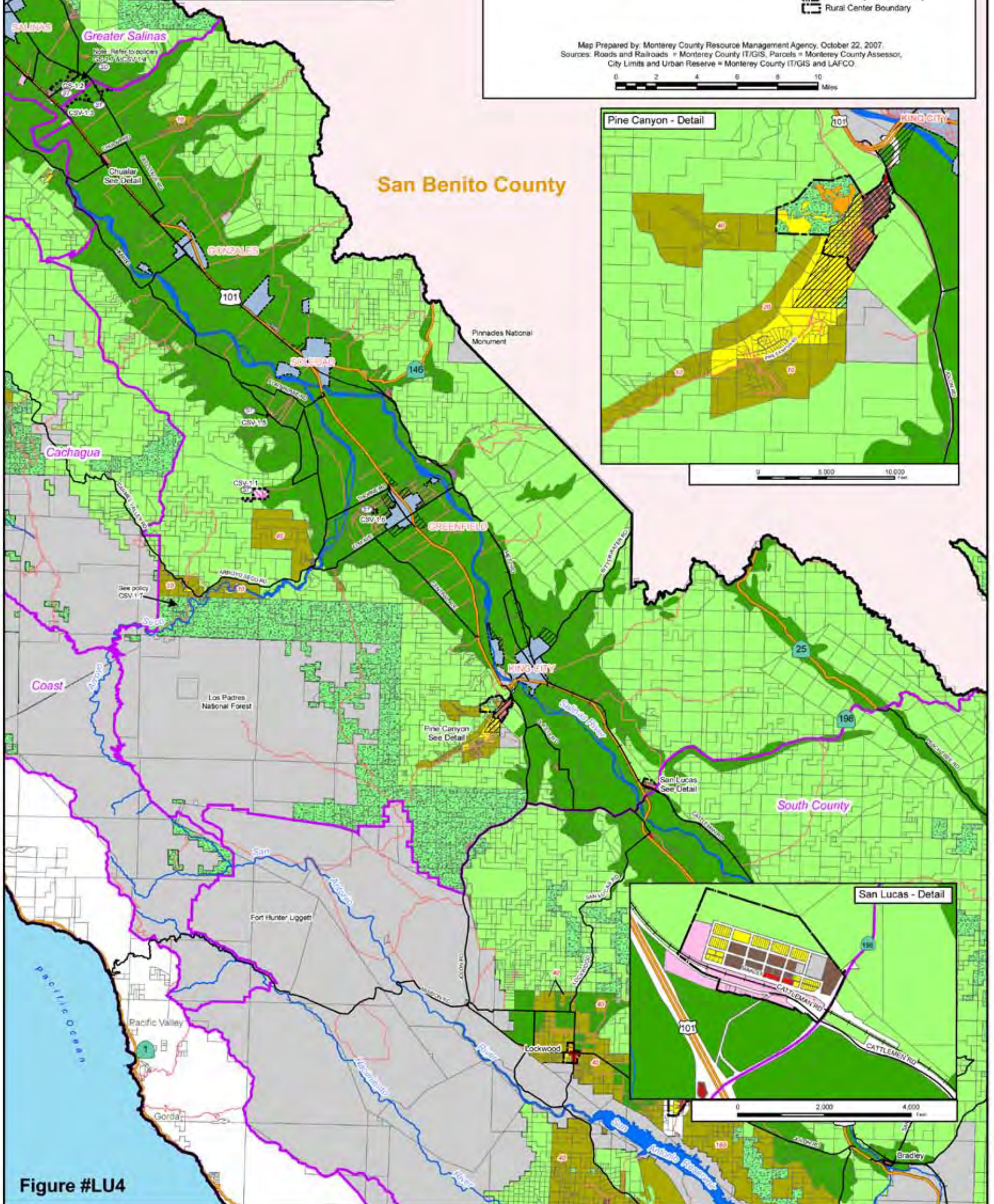
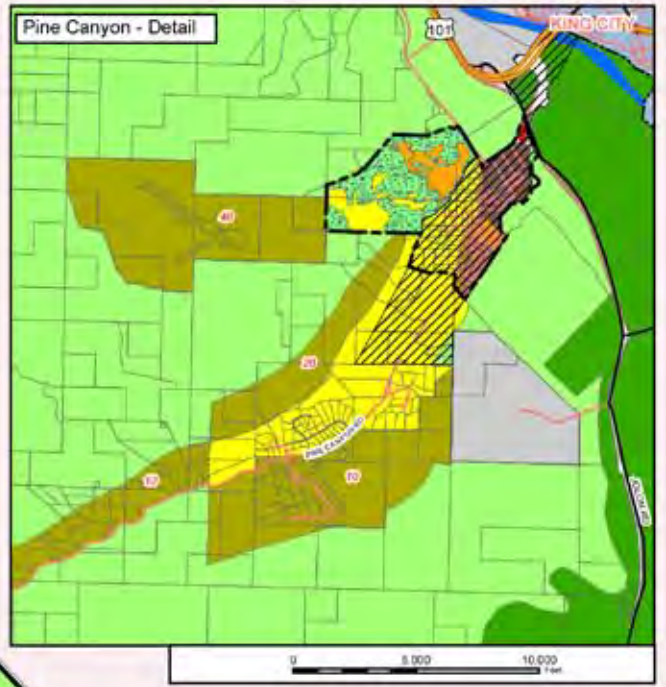


Figure #LU4

00982.07 (rev. 12-08)