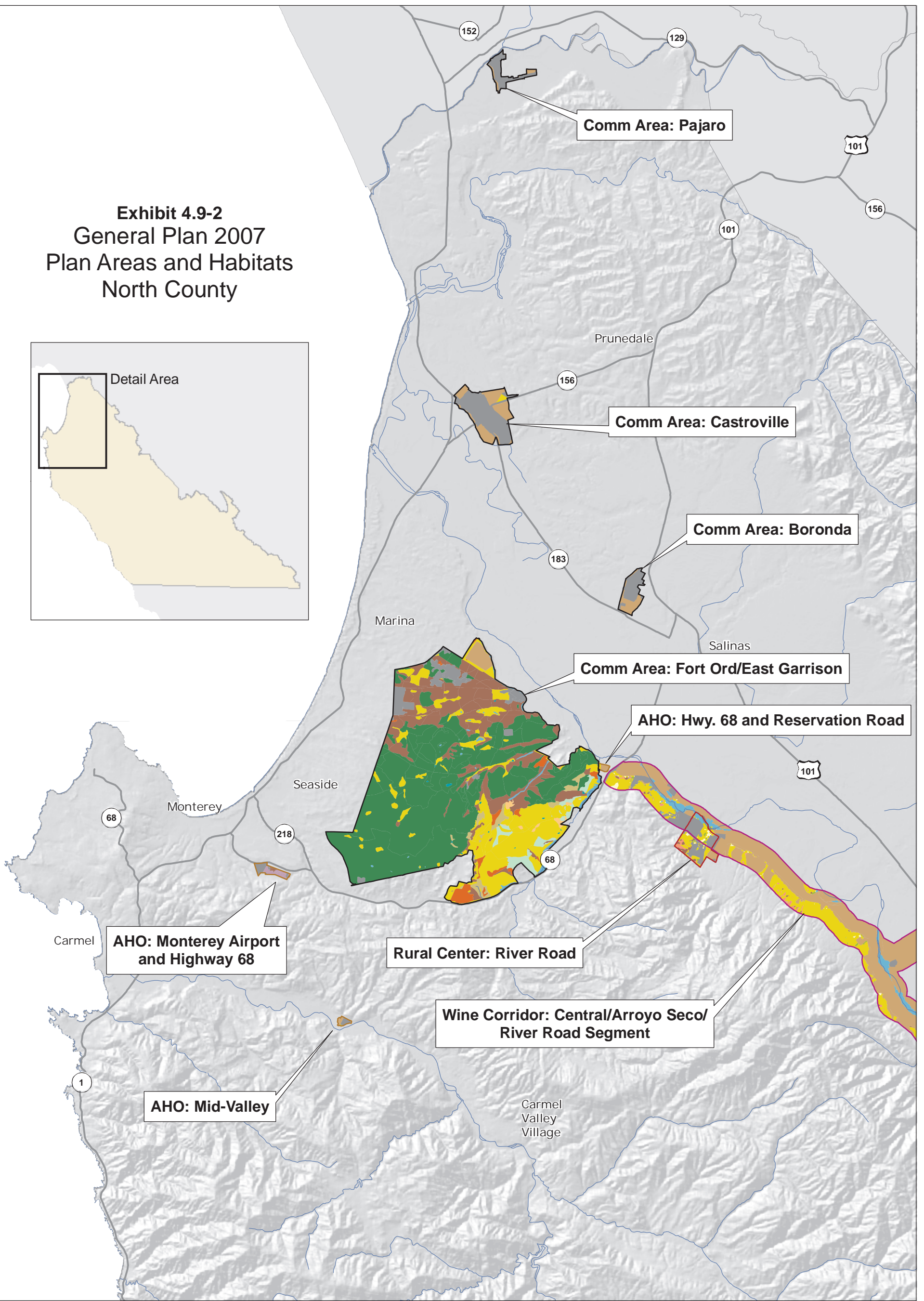
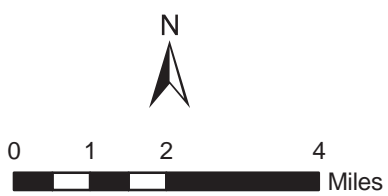


**Exhibit 4.9-2
General Plan 2007
Plan Areas and Habitats
North County**



Habitat Types

- | | | |
|------------------------------|-------------------------|-----------------------------|
| Annual Grassland | Coastal Terrace Prairie | Mixed Conifer |
| Native Grassland | Coastal Prairie | Freshwater Marsh |
| Valley Needlegrass Grassland | Maritime Chaparral | Riparian/Wetland |
| Oak Woodland | Baccharis Scrub | Sparse Vegetation/Bare Soil |
| Blue Oak Woodland | Coastal Scrub | Urban/Non-Veg |
| Oak Savanna | Gabilan Scrub | Agriculture |



Sources: California Department of Conservation, Farmland Mapping and Monitoring Program, 1984, 1996, and 2006. County of Monterey, 1982 vegetation mapping. California Spatial Information Library.