



MONTEREY COUNTY

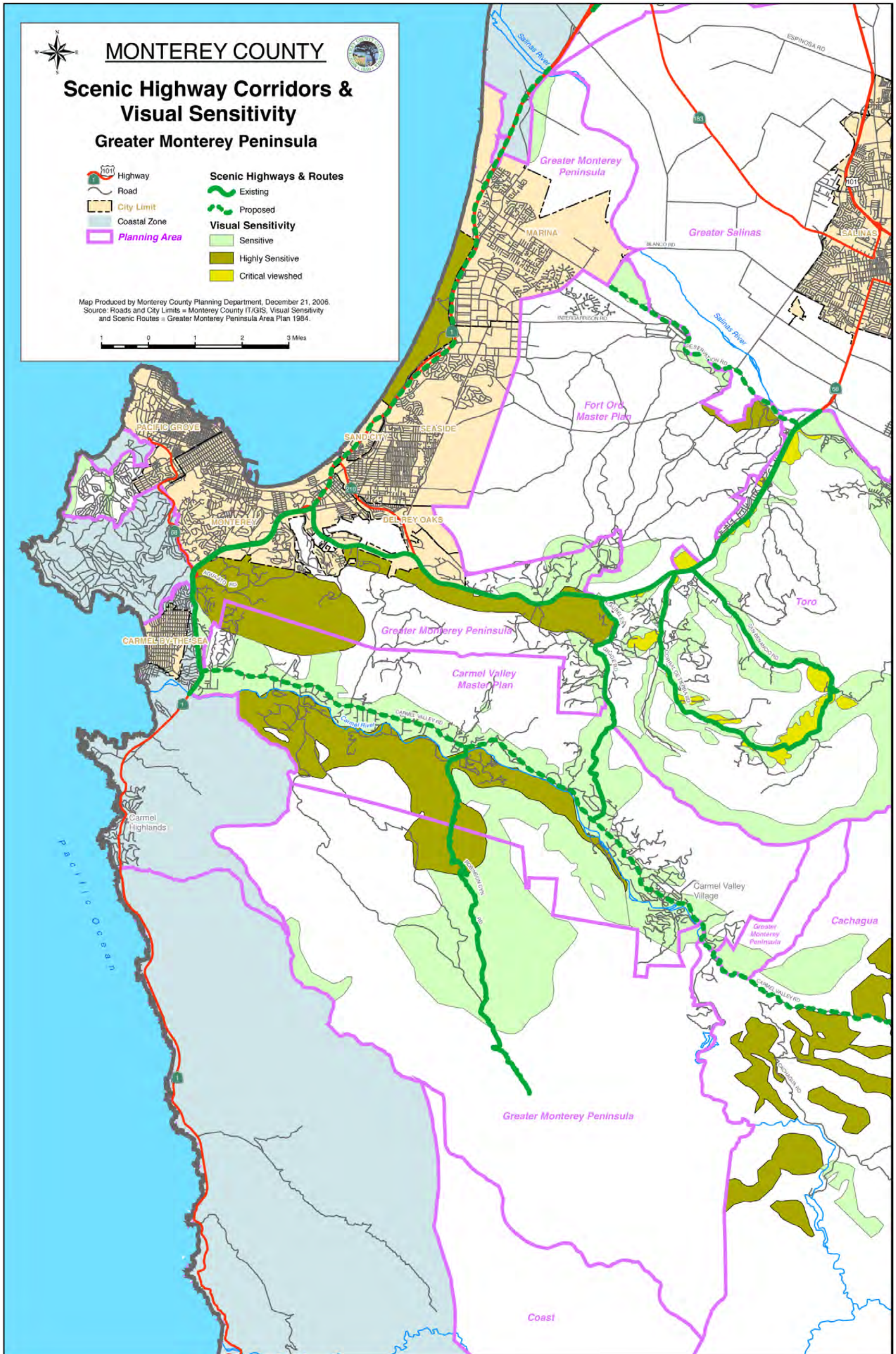
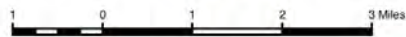


Scenic Highway Corridors & Visual Sensitivity

Greater Monterey Peninsula

- Highway
 - Road
 - City Limit
 - Coastal Zone
 - Planning Area
- Scenic Highways & Routes**
 - Existing
 - Proposed
- Visual Sensitivity**
 - Sensitive
 - Highly Sensitive
 - Critical Viewshed

Map Produced by Monterey County Planning Department, December 21, 2006.
 Source: Roads and City Limits = Monterey County IT/GIS, Visual Sensitivity and Scenic Routes = Greater Monterey Peninsula Area Plan 1984.



00982.07 (06-08)