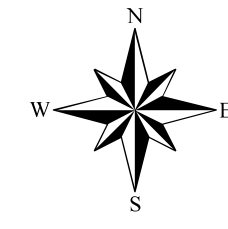


MONTEREY COUNTY

Land Use Plan Cachagua



- Road
- Planning Area
- National Forest Boundary
- Parcel

- Residential - red figure = Acres/Unit***
- Residential - Rural Density 5 Acres+/Unit
 - Residential - Low Density 5 - 1 Acres/Unit
- Commercial**
- Commercial
- Agricultural - red figure = Acre Minimum***
- Farmlands 40 - 160 Acre Minimum
 - Rural Grazing 10 - 160 Acre Minimum
 - Permanent Grazing 10 - 160 Acre Minimum
- Resource Conservation 10 - 160 Acre Minimum**
- Resource Conservation - red figure = Acre Minimum*
 - Rivers and Water Bodies

- Public/Quasi-Public
- Special Treatment Area & Policy #

*No density value indicates development limited to lots of record.

Map Prepared by Monterey County Resource Management Agency,
July 12, 2011. Sources: Roads - Monterey County IT/GIS,
Parcels - Monterey County Assessor,
Adopted by the Board of Supervisors October 26, 2010.

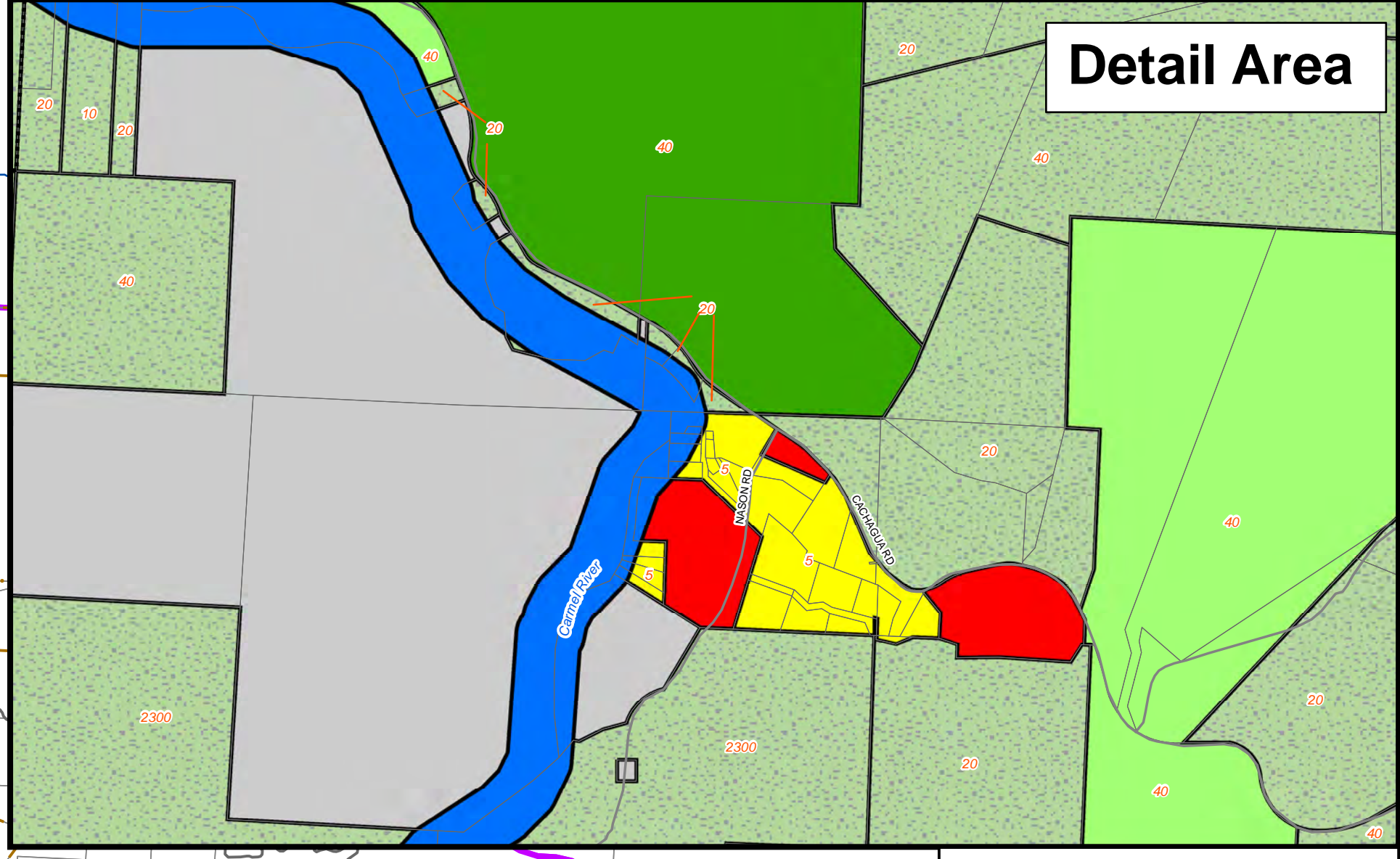
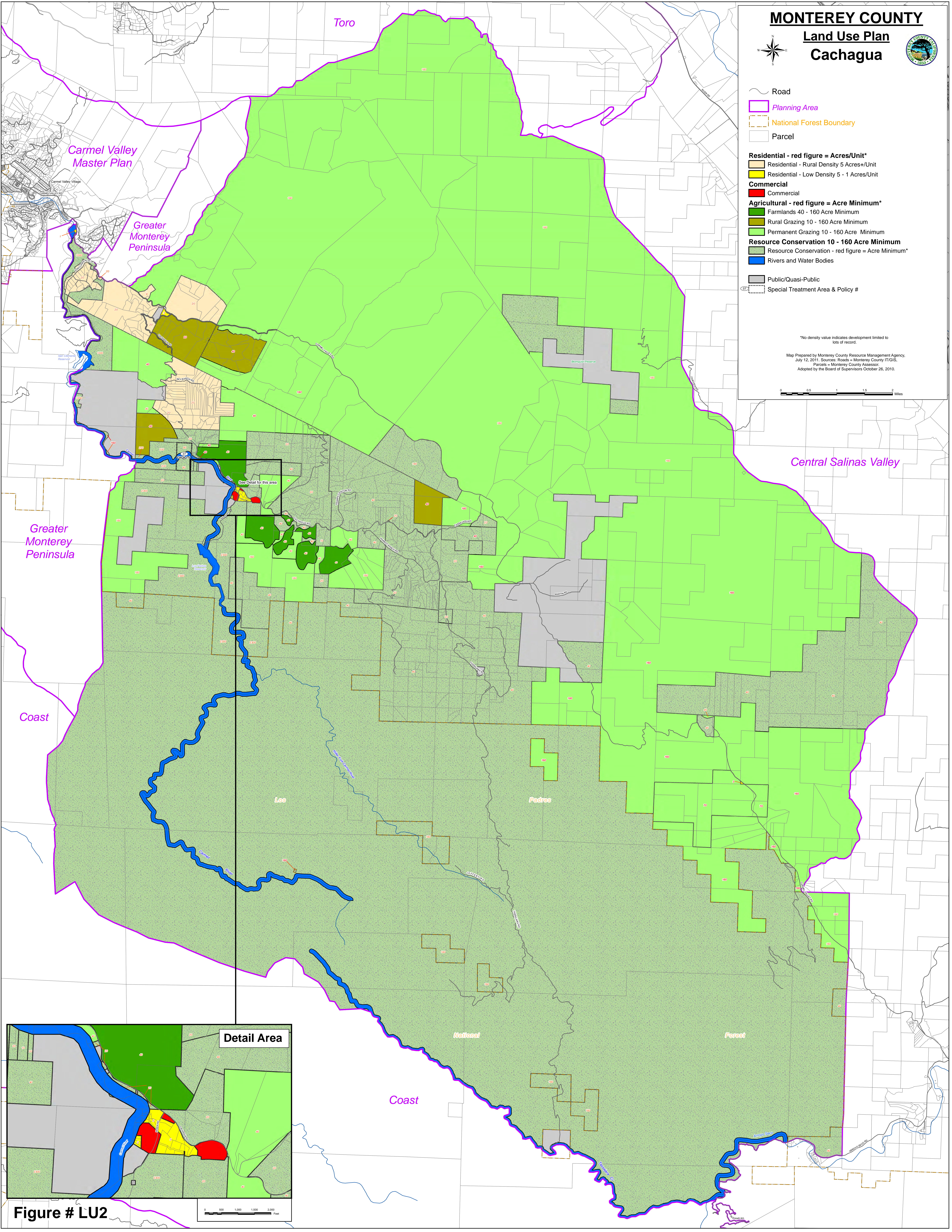


Figure # LU2