

MONTEREY COUNTY

Land Use Plan

Carmel Valley Master Plan

- Highway
- Road
- Coastal Zone Boundary
- Planning Area
- City Limits
- Park Boundary
- Parcel
- Airport

Residential - red figure = Acres/Unit*

- Residential - Rural Density 5 Acres+/Unit
- Residential - Low Density 5 - 1 Acres/Unit

Residential - red figure = Units/Acre*

- Residential - Medium Density 1 - 5 Units/Acre
- Residential - High Density 5 - 20 Units/Acre

Agricultural - red figure = Acre Minimum*

- Carmel Valley Ranch Master Plan
- Rural Grazing 10 - 160 Acre Minimum
- Permanent Grazing 10 - 160 Ac Min

Commercial

- Commercial
- Heavy Commercial
- Planned Commercial
- Visitor Accommodations/Professional Offices

Resource Conservation 10 - 160 Acre Minimum

- Resource Conservation - red figure = Acre Minimum*
- Open Space

Other

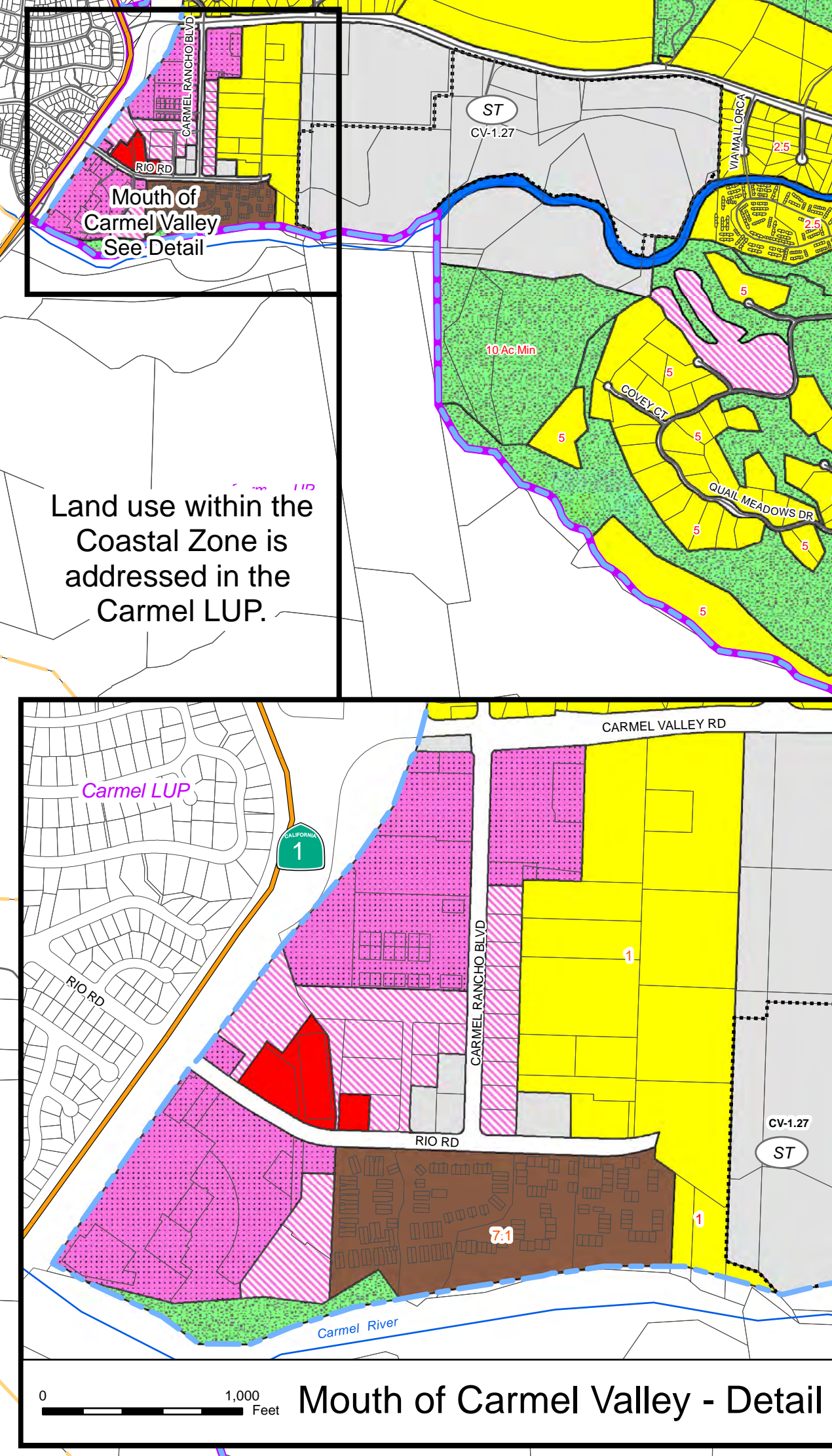
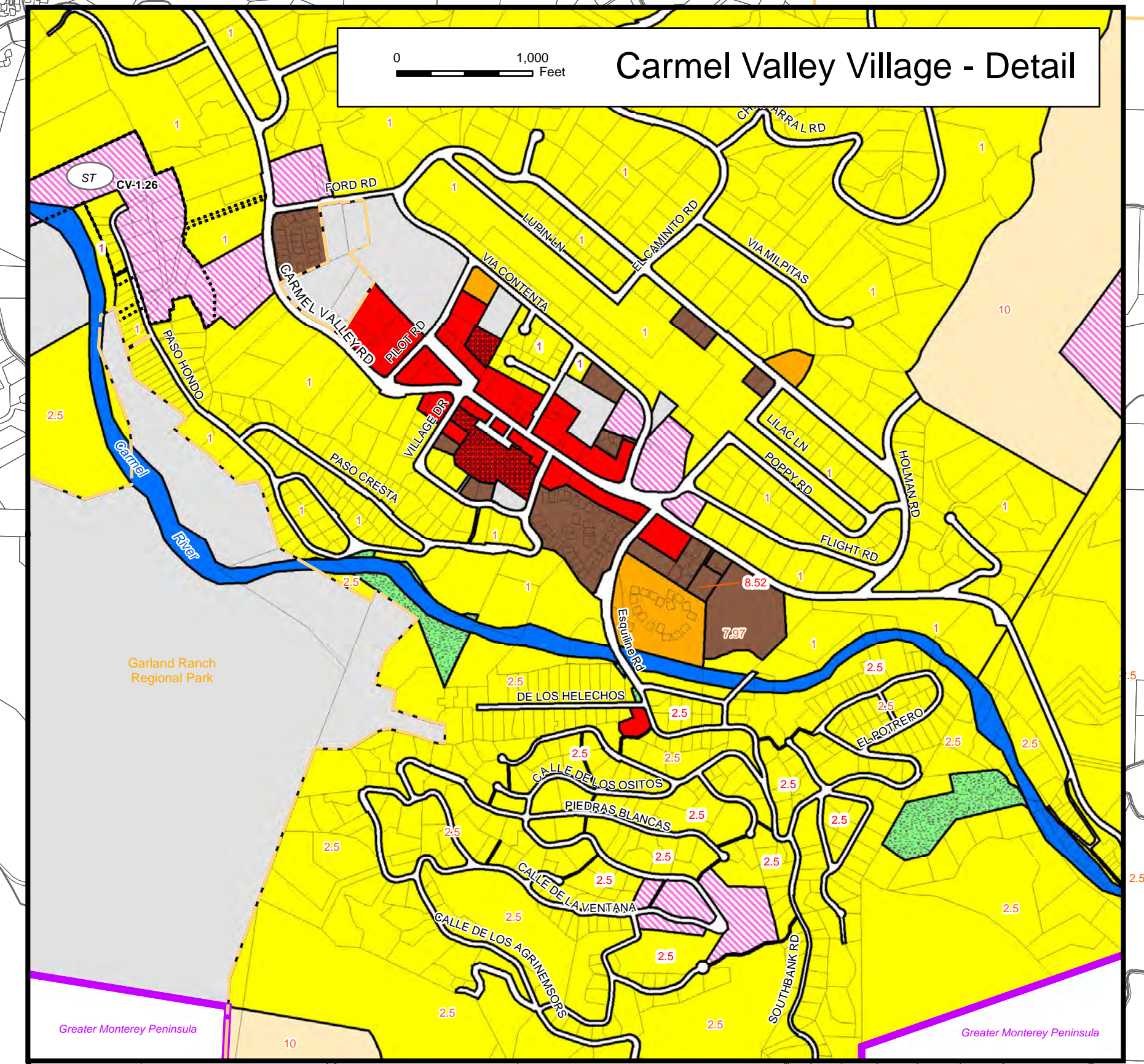
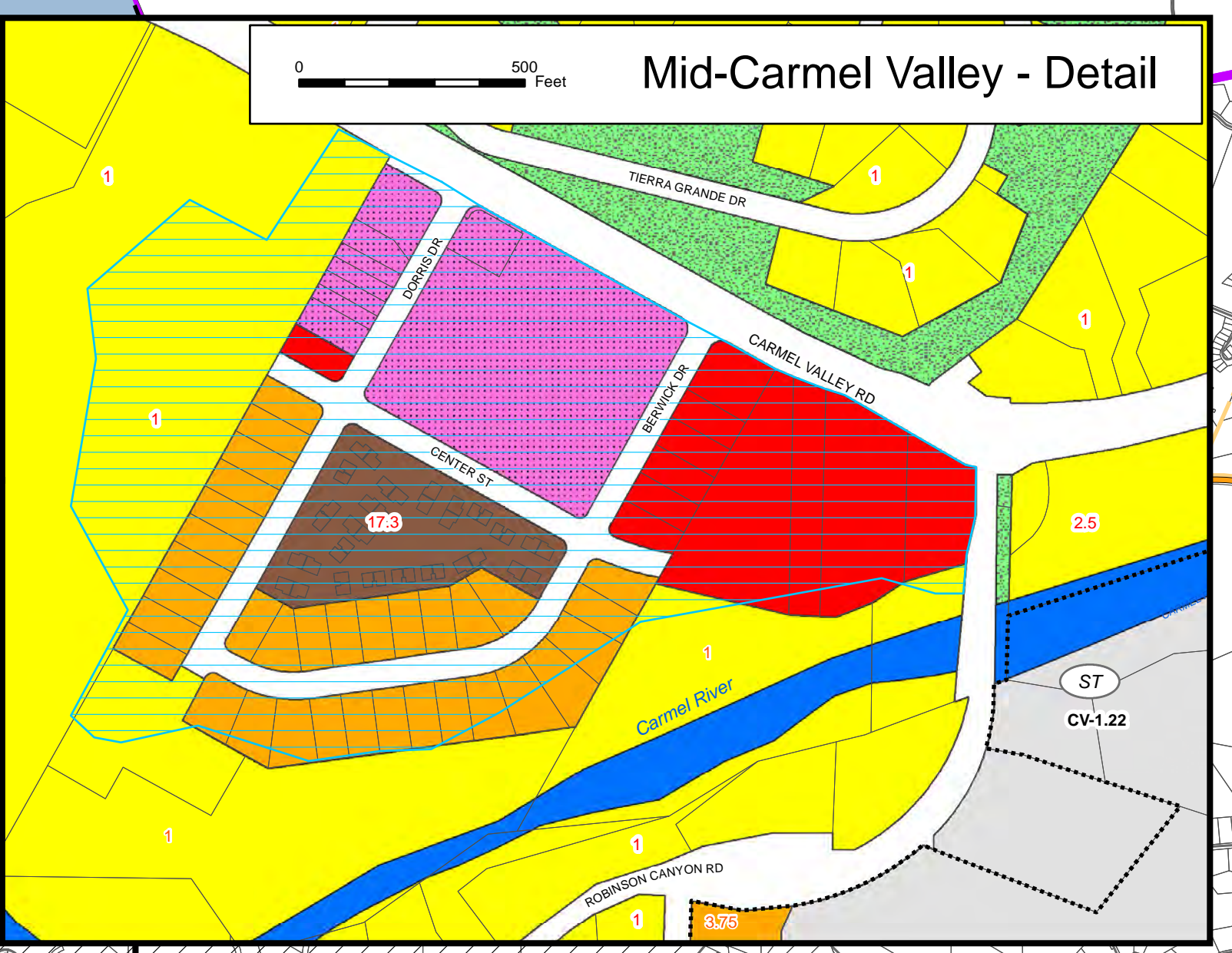
- Public/Quasi-Public
- Rivers and Water Bodies
- Affordable Housing Overlay
- Special Treatment Area & Policy #
- Urban Reserve

*No density value indicates development limited to lots of record.

Map Prepared by: Monterey County Resource Management Agency, July 13, 2011.
Sources: Roads = Monterey County IT/GIS, Parcels = Monterey County Assessor, City Limits and Urban Reserve = Monterey County LAFCO.
Coastal Zone Boundary = California Coastal Commission.

Adopted by the Board of Supervisors October 26, 2010.

Figure #LU3



Land use within the Coastal Zone is addressed in the Carmel LUP.