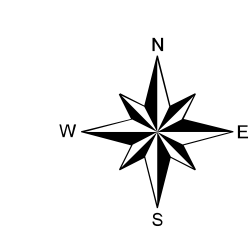


# MONTEREY COUNTY

## Land Use Plan

### South County

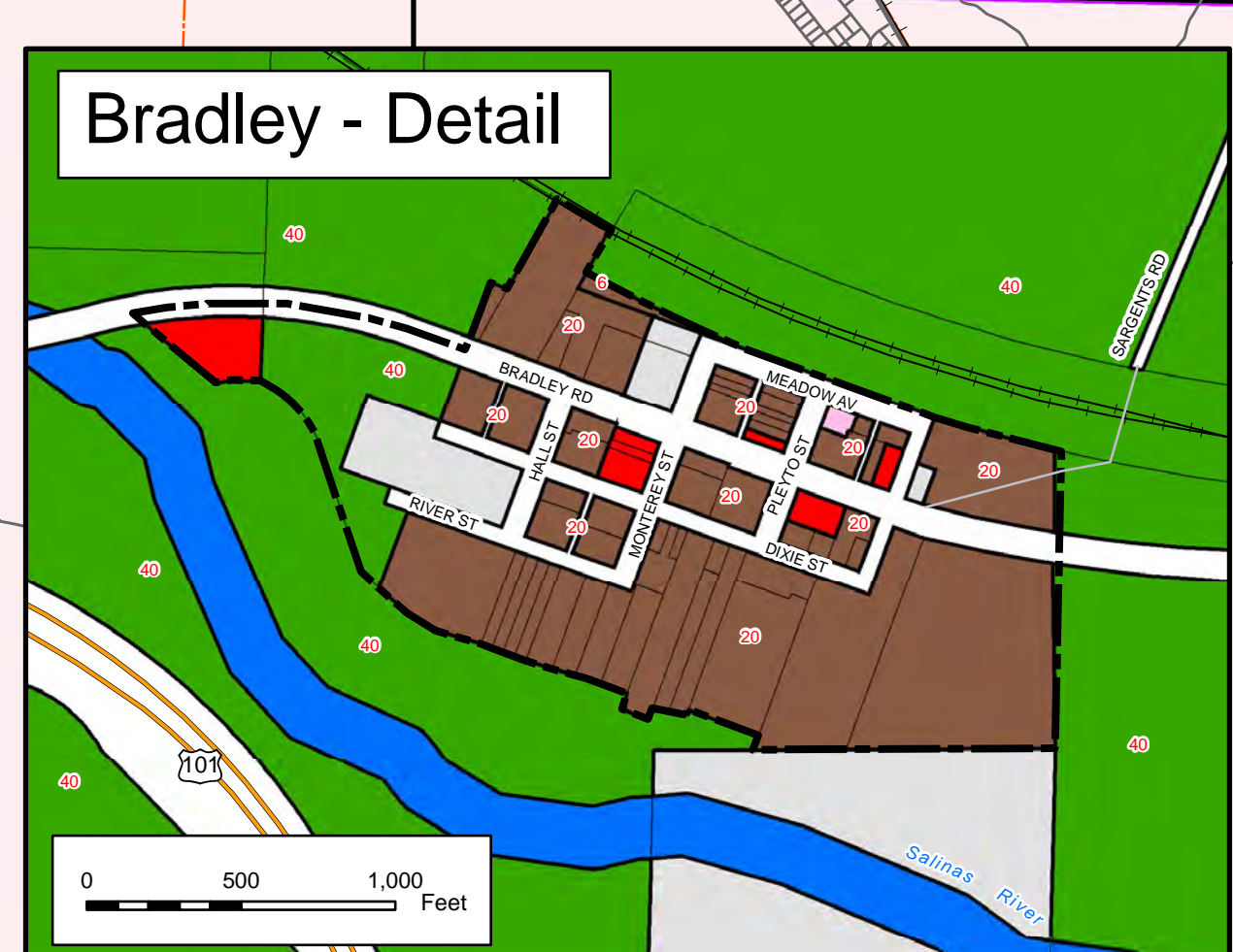
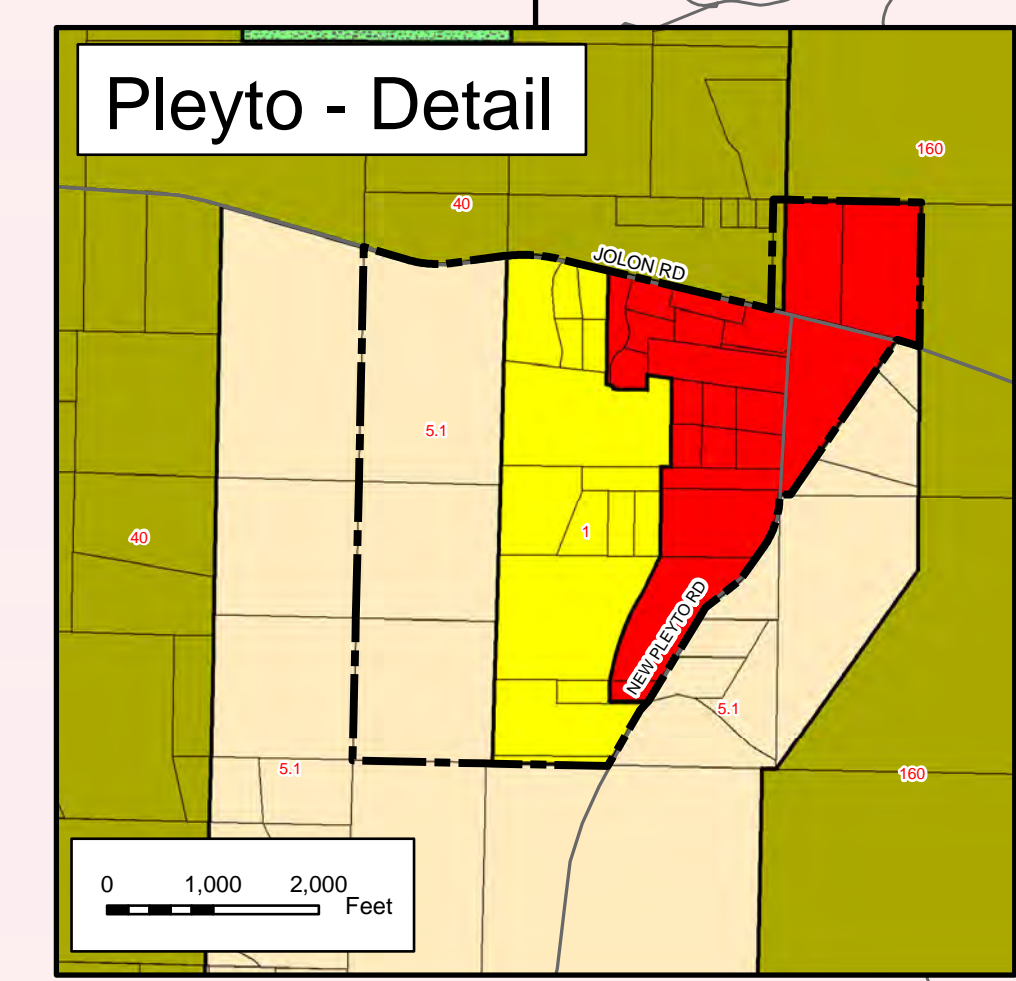
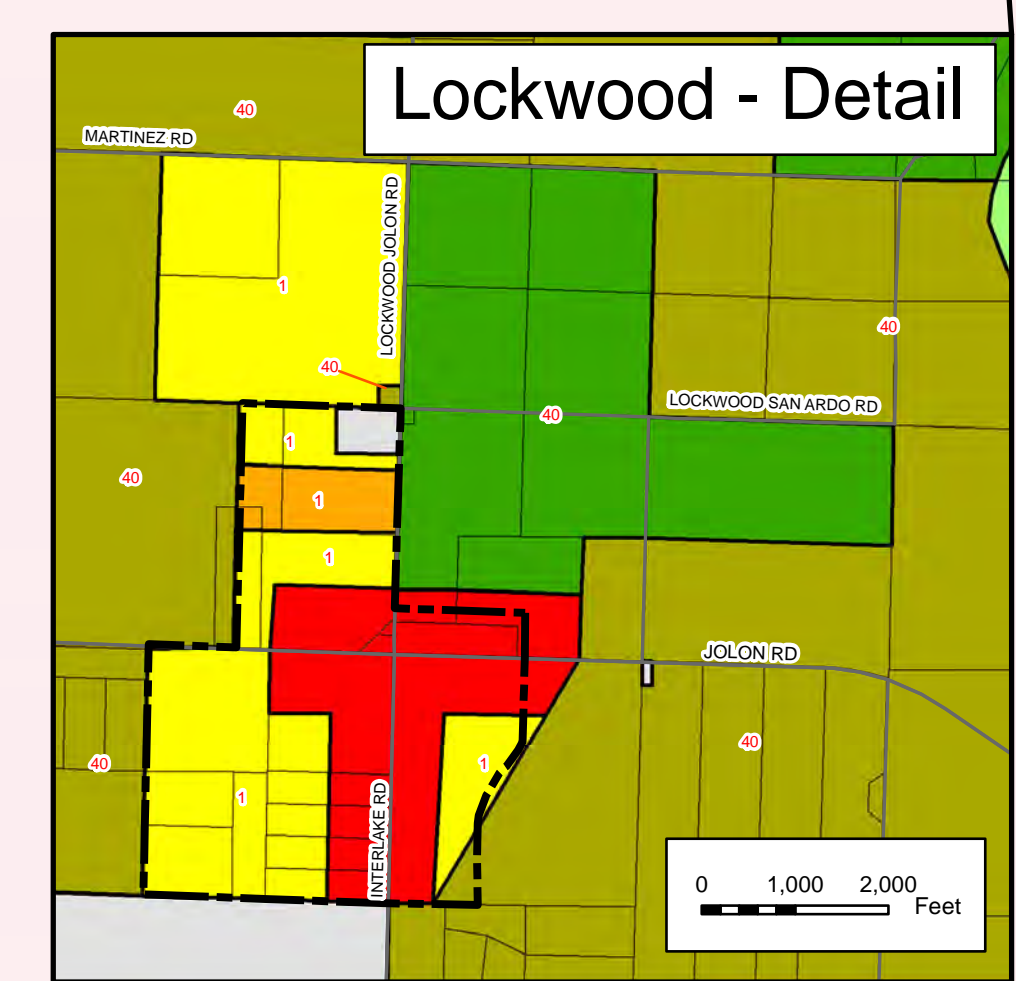
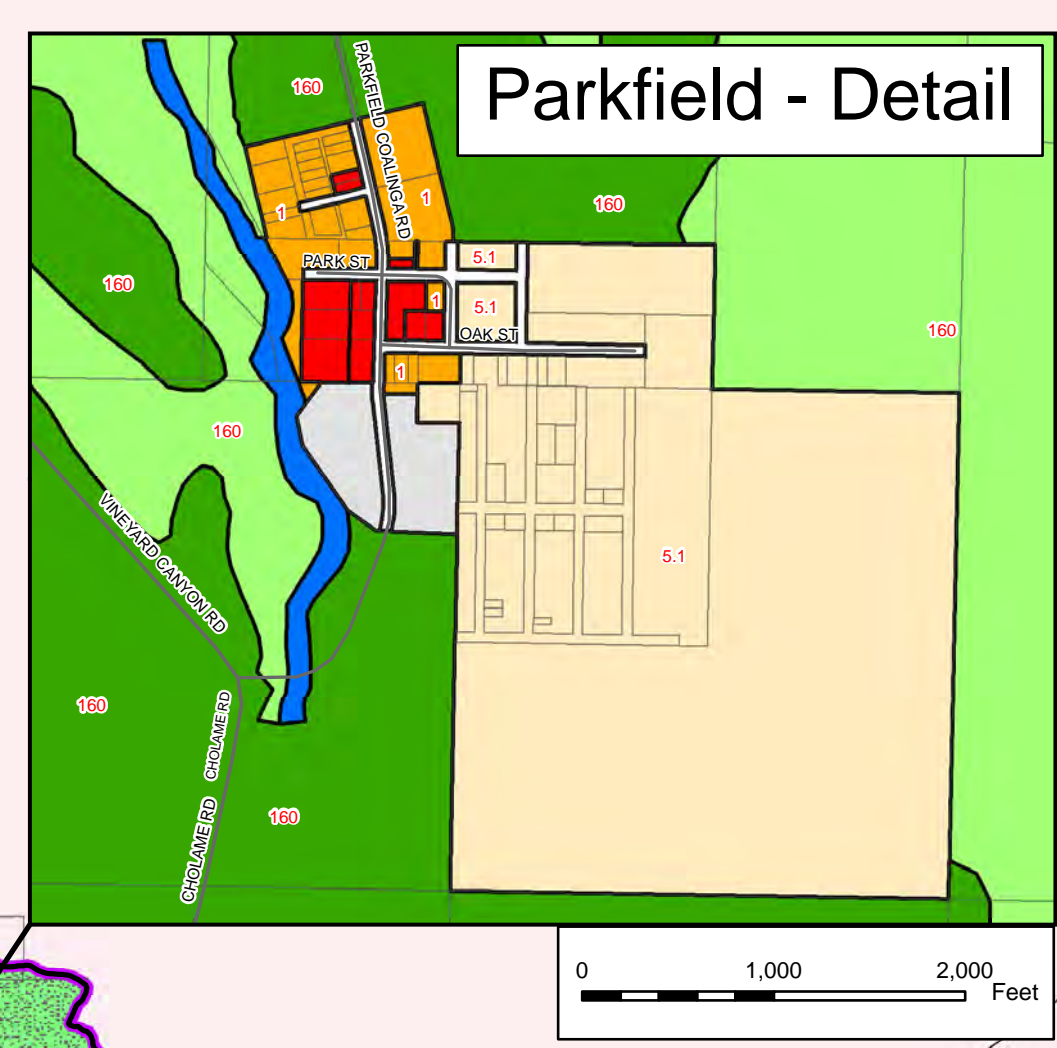
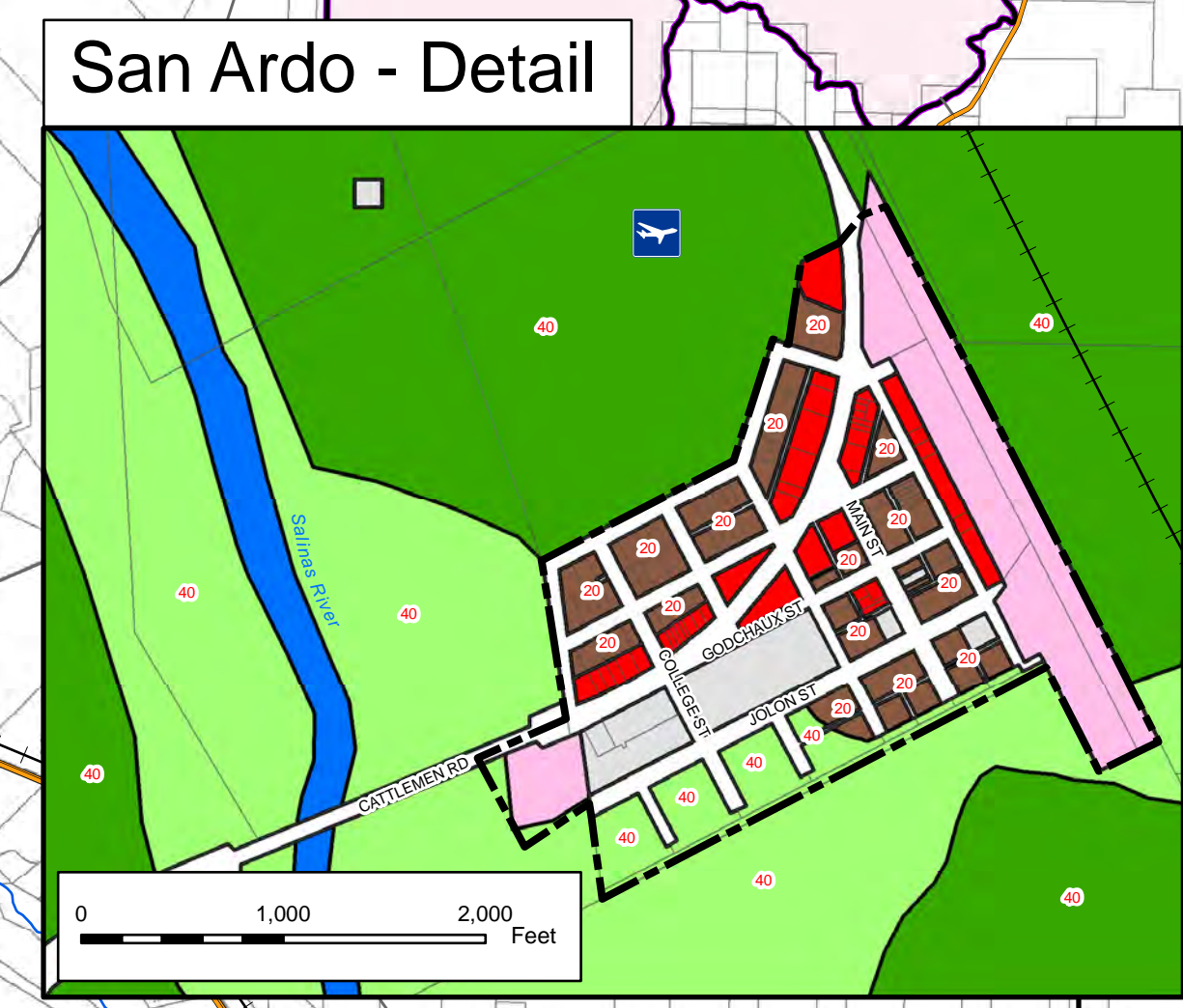
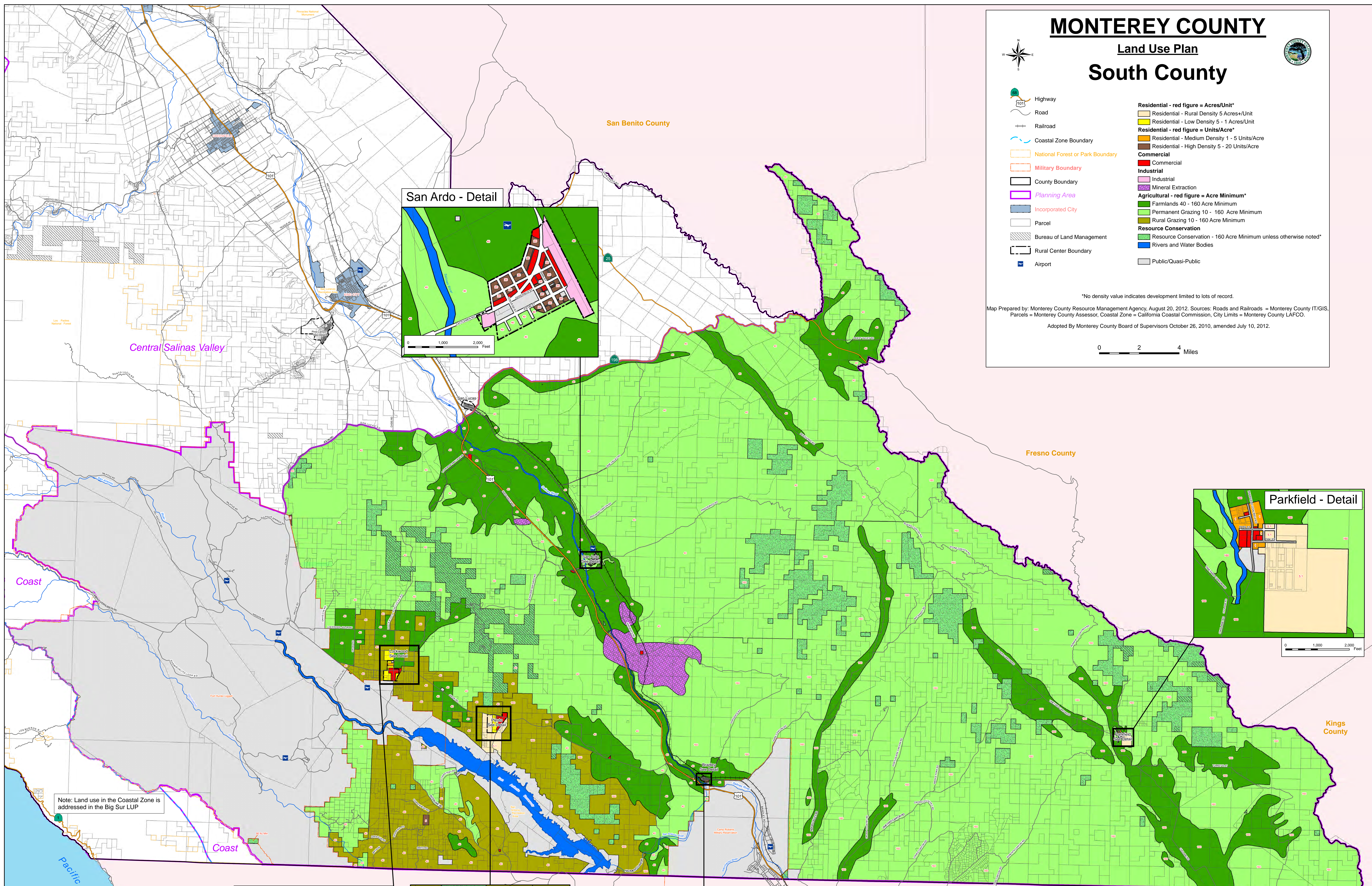
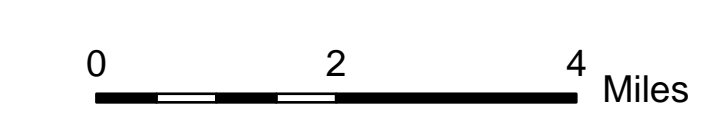


- Highway
  - Road
  - Railroad
  - Coastal Zone Boundary
  - National Forest or Park Boundary
  - Military Boundary
  - County Boundary
  - Planning Area
  - Incorporated City
  - Parcel
  - Bureau of Land Management
  - Rural Center Boundary
  - Airport
- Residential - red figure = Acres/Unit\***
    - Residential - Rural Density 5 Acres+/Unit
    - Residential - Low Density 5 - 1 Acres/Unit
  - Residential - red figure = Units/Acre\***
    - Residential - Medium Density 1 - 5 Units/Acre
    - Residential - High Density 5 - 20 Units/Acre
  - Commercial**
    - Commercial
  - Industrial**
    - Industrial
    - Mineral Extraction
  - Agricultural - red figure = Acre Minimum\***
    - Farmlands 40 - 160 Acre Minimum
    - Permanent Grazing 10 - 160 Acre Minimum
    - Rural Grazing 10 - 160 Acre Minimum
  - Resource Conservation**
    - Resource Conservation - 160 Acre Minimum unless otherwise noted\*
    - Rivers and Water Bodies
  - Public/Quasi-Public

\*No density value indicates development limited to lots of record.

Map Prepared by: Monterey County Resource Management Agency, August 20, 2012. Sources: Roads and Railroads = Monterey County IT/GIS, Parcels = Monterey County Assessor, Coastal Zone = California Coastal Commission, City Limits = Monterey County LAFCO.

Adopted By Monterey County Board of Supervisors October 26, 2010, amended July 10, 2012.



Note: Land use in the Coastal Zone is addressed in the Big Sur LUP

Figure #LU9