

MONTEREY COUNTY



Scenic Highway Corridors & Visual Sensitivity

Greater Monterey Peninsula

- | | |
|-----------------------|-------------------------------------|
| Highway | Scenic Highways & Routes |
| Roads | Existing |
| City Limit | Proposed |
| Coastal Zone Boundary | Visual Sensitivity |
| Planning Area | Sensitive |
| | Highly Sensitive |
| | Critical Viewshed |

Map Produced by Monterey County Resource Management Agency, January 26, 2010.
 Source: Roads and City Limits = Monterey County IT/GIS, Visual Sensitivity and Scenic Routes = Greater Monterey Peninsula Area Plan 1984.

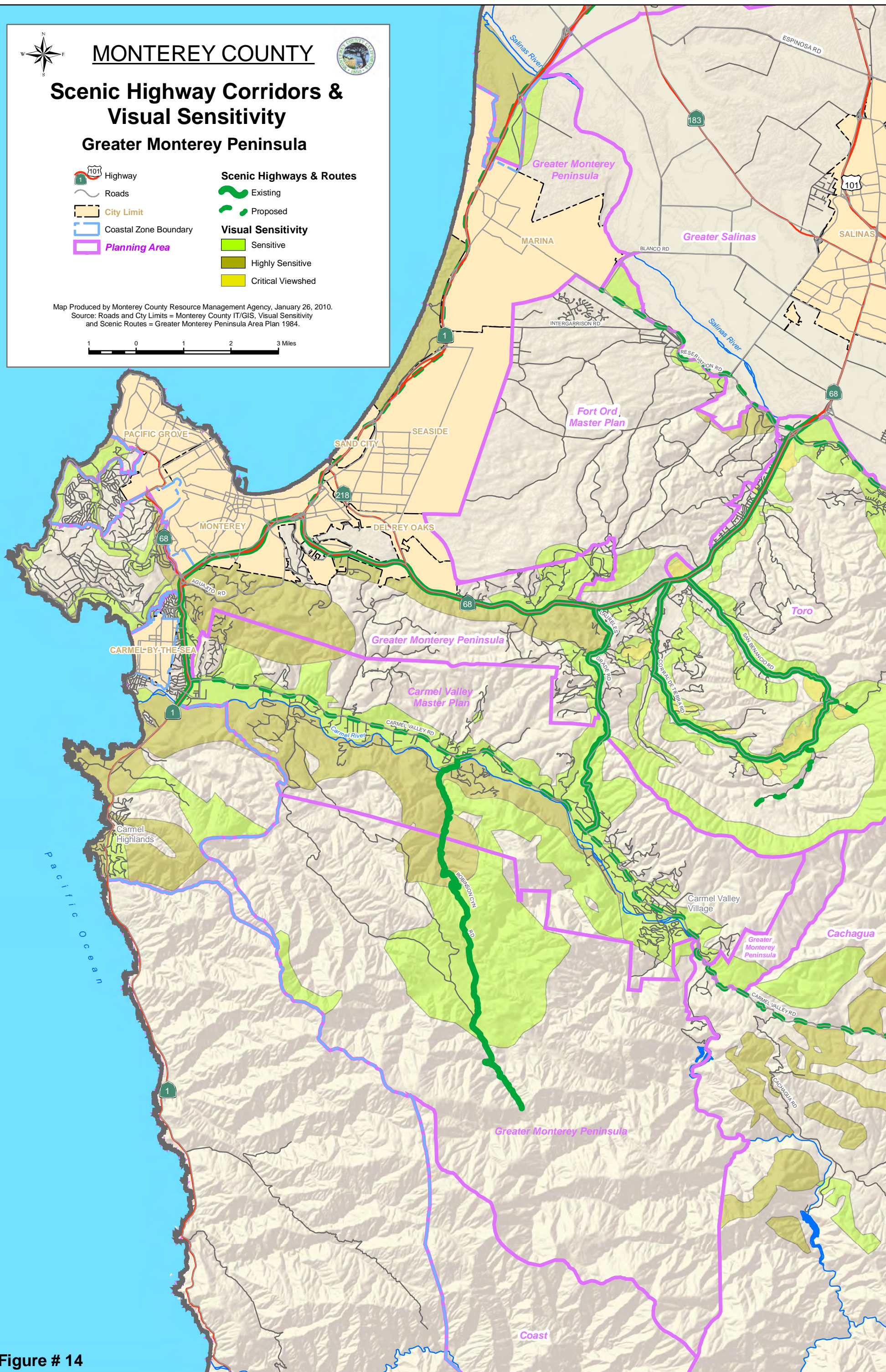
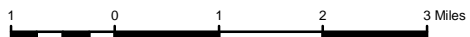


Figure # 14