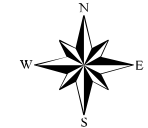


# MONTEREY COUNTY Land Use Plan Toro

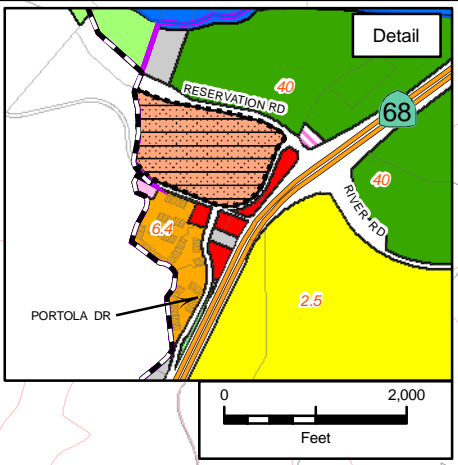
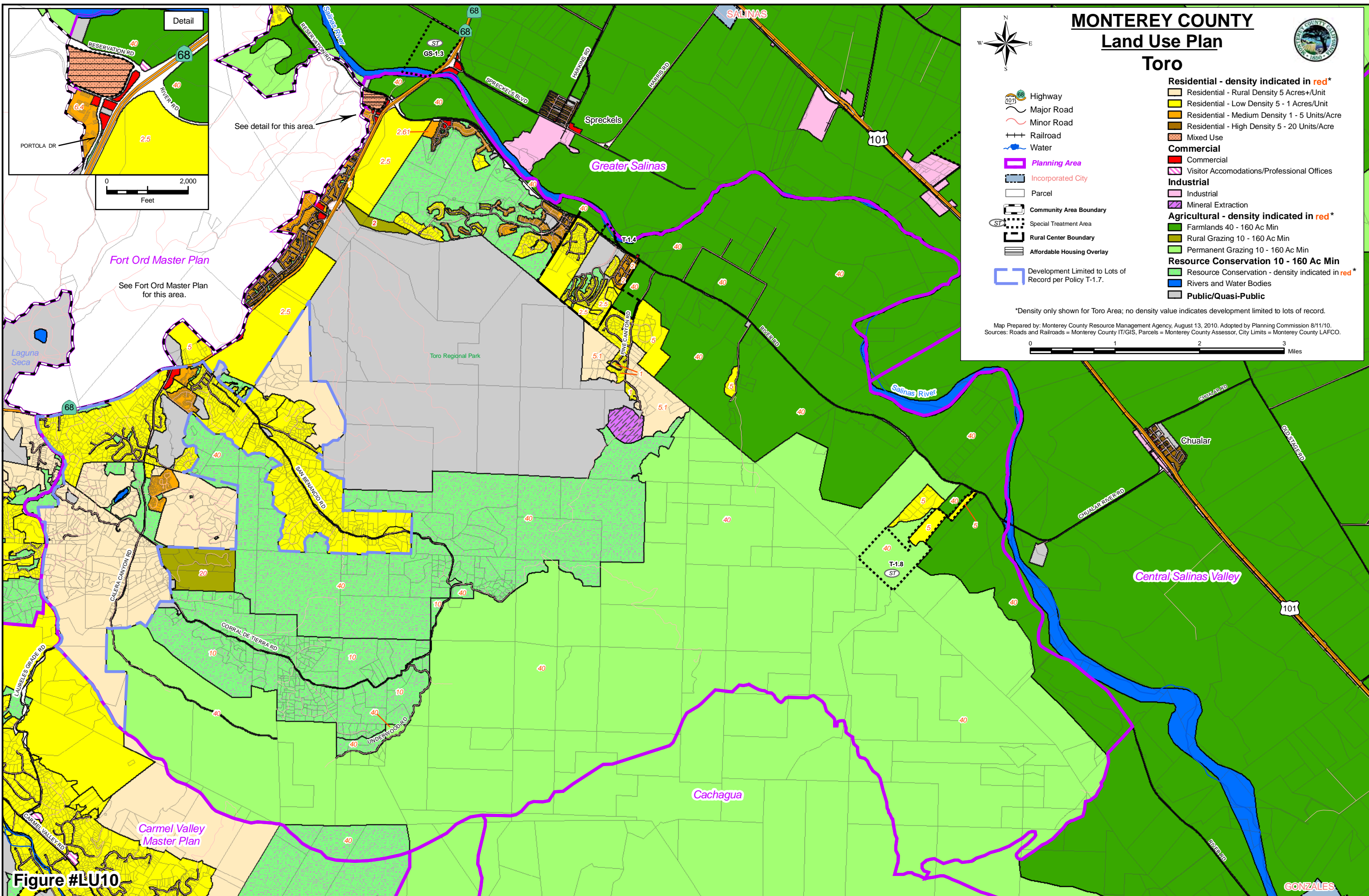


- Highway
- Major Road
- Minor Road
- Railroad
- Water
- Planning Area
- Incorporated City
- Parcel
- Community Area Boundary
- Special Treatment Area
- Rural Center Boundary
- Affordable Housing Overlay
- Development Limited to Lots of Record per Policy T-1.7

- Residential - density indicated in red\***
- Residential - Rural Density 5 Acres+/Unit
  - Residential - Low Density 5 - 1 Acres/Unit
  - Residential - Medium Density 1 - 5 Units/Acre
  - Residential - High Density 5 - 20 Units/Acre
  - Mixed Use
- Commercial**
- Commercial
  - Visitor Accomodations/Professional Offices
- Industrial**
- Industrial
  - Mineral Extraction
- Agricultural - density indicated in red\***
- Farmlands 40 - 160 Ac Min
  - Rural Grazing 10 - 160 Ac Min
  - Permanent Grazing 10 - 160 Ac Min
- Resource Conservation 10 - 160 Ac Min**
- Resource Conservation - density indicated in red\*
  - Rivers and Water Bodies
  - Public/Quasi-Public

\*Density only shown for Toro Area; no density value indicates development limited to lots of record.

Map Prepared by: Monterey County Resource Management Agency, August 13, 2010. Adopted by Planning Commission 8/11/10.  
Sources: Roads and Railroads = Monterey County IT/GIS, Parcels = Monterey County Assessor, City Limits = Monterey County LAFCO.



See detail for this area.

Fort Ord Master Plan

See Fort Ord Master Plan for this area.

Figure #LU10