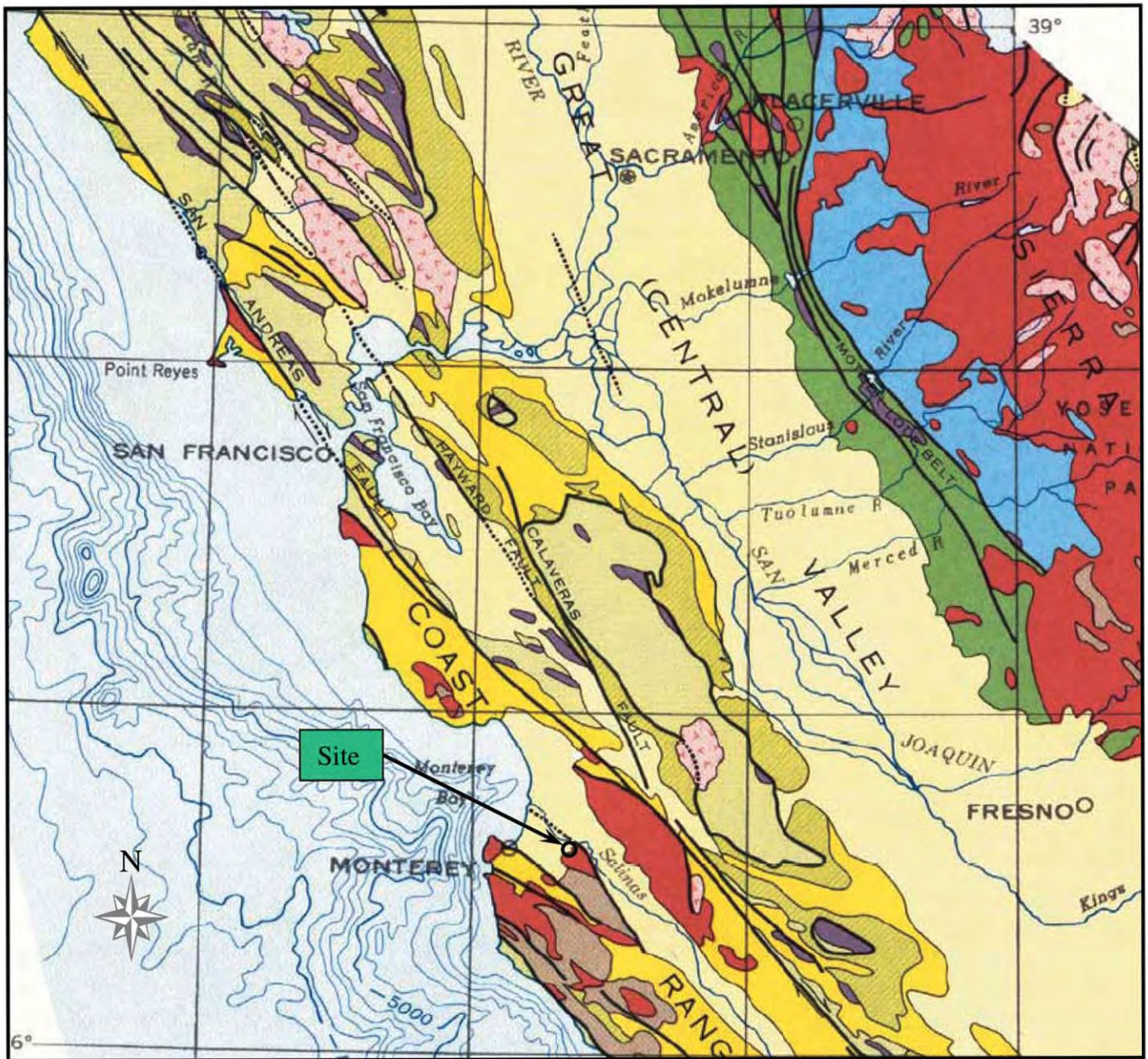


T:_CSA\Work\Monterey, County of\Ferrini Ranch\Figures\Section 2-1\Figure 3.5-1.ai, April 2007



EXPLANATION
of units in SF Bay Area

| | |
|---|---------------------------|
| Cenozoic nonmarine | Mesozoic Granitic rocks |
| Cenozoic marine | Mesozoic Ultramafic rocks |
| Late Mesozoic shelf and slope | Pre-Cenozoic rocks |
| Late Mesozoic of the Franciscan Formation | |

Fault, dotted where concealed, arrows indicate direction of movement

Source: Klienfelder Inc, 2006

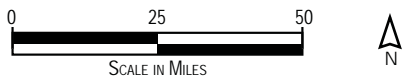


FIGURE 3.5-1
REGIONAL GEOLOGY MAP

