

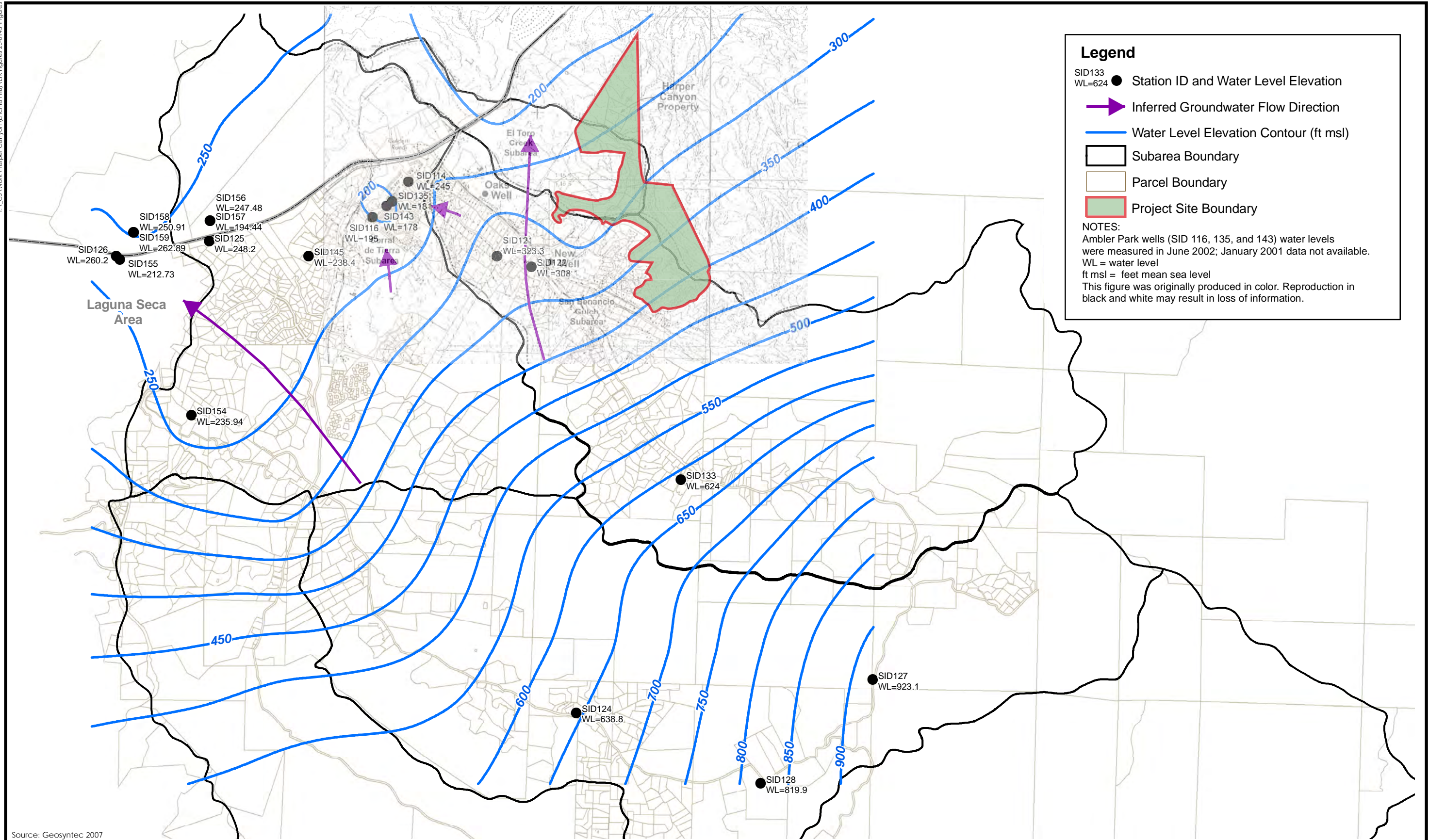
Legend

- Harper Canyon Realty
- Well
- Geosyntec El Toro Area Study Area
- Geosyntec Adendum X Section
- M_CO.Parcels

Source: MCWRA2011



Figure MR1-1
Geosyntec Study Area in Relationship to the Project Site



Legend

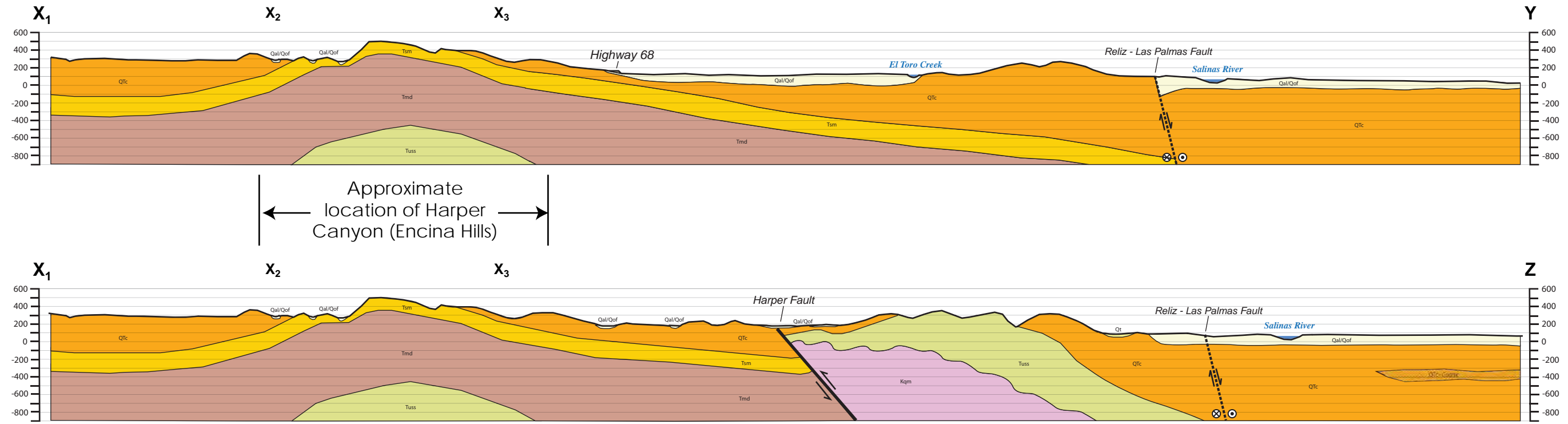
- SID133
WL=624 ● Station ID and Water Level Elevation
- ➔ Inferred Groundwater Flow Direction
- Water Level Elevation Contour (ft msl)
- ▭ Subarea Boundary
- ▭ Parcel Boundary
- ▭ Project Site Boundary

NOTES:
 Ambler Park wells (SID 116, 135, and 143) water levels were measured in June 2002; January 2001 data not available.
 WL = water level
 ft msl = feet mean sea level
 This figure was originally produced in color. Reproduction in black and white may result in loss of information.

Source: Geosyntec 2007



Figure MR1-2
 Geosyntec Study Area Groundwater Flow
 PMC®



LEGEND

- Well from MCWRA database (see Table 1 for well ID)
- ▲ Well from Yates et al 2005
- 50 Estimated Groundwater Elevation Contour Based on Jan 2001 data and contour map (Geosyntec, 2007), MCWRA database, and Yates et. al (2005).

Well IDs for Supplemental Wells

- | | |
|------------------|-------------------|
| 1) 16S/02E-03A01 | 6) 15S/03E-18F01 |
| 2) 16S/02E-02D05 | 7) 15S/03E-18C02 |
| 3) 16S/02E-02D01 | 8) 15S/03E-18B01 |
| 4) 15S/02E-25C01 | 9) 15S/03E-08T50 |
| 5) 15S/03E-18M02 | 10) 15S/03E-17M01 |

NOTES:
 Geology adapted from Clark et al. 2000, Rosenberg, L.I. 2001, Yates et al. 2005, Kennedy Jenks, 2004
 Well locations are approximate.

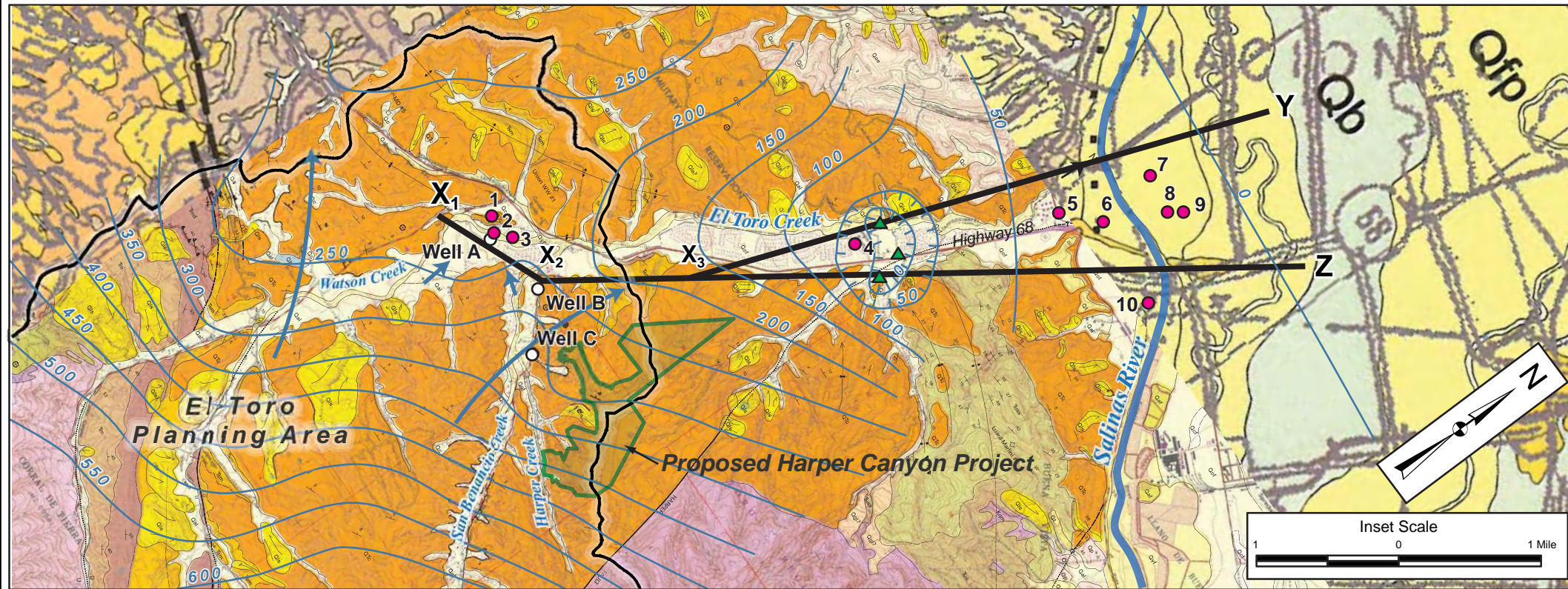
Cross-Sections Have 2X Vertical Exaggeration
 2,500 0 2,500 Feet

Geologic Map and Cross-Sections from El Toro to Salinas Valley

El Toro Groundwater Study
 Monterey County, CA

Geosyntec
 consultants

June 2010



Source: Geosyntec Consultants, June 2010

Figure MR1-3
 Geosyntec Study Area Geologic Cross Sections



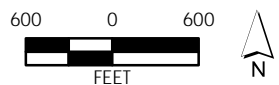
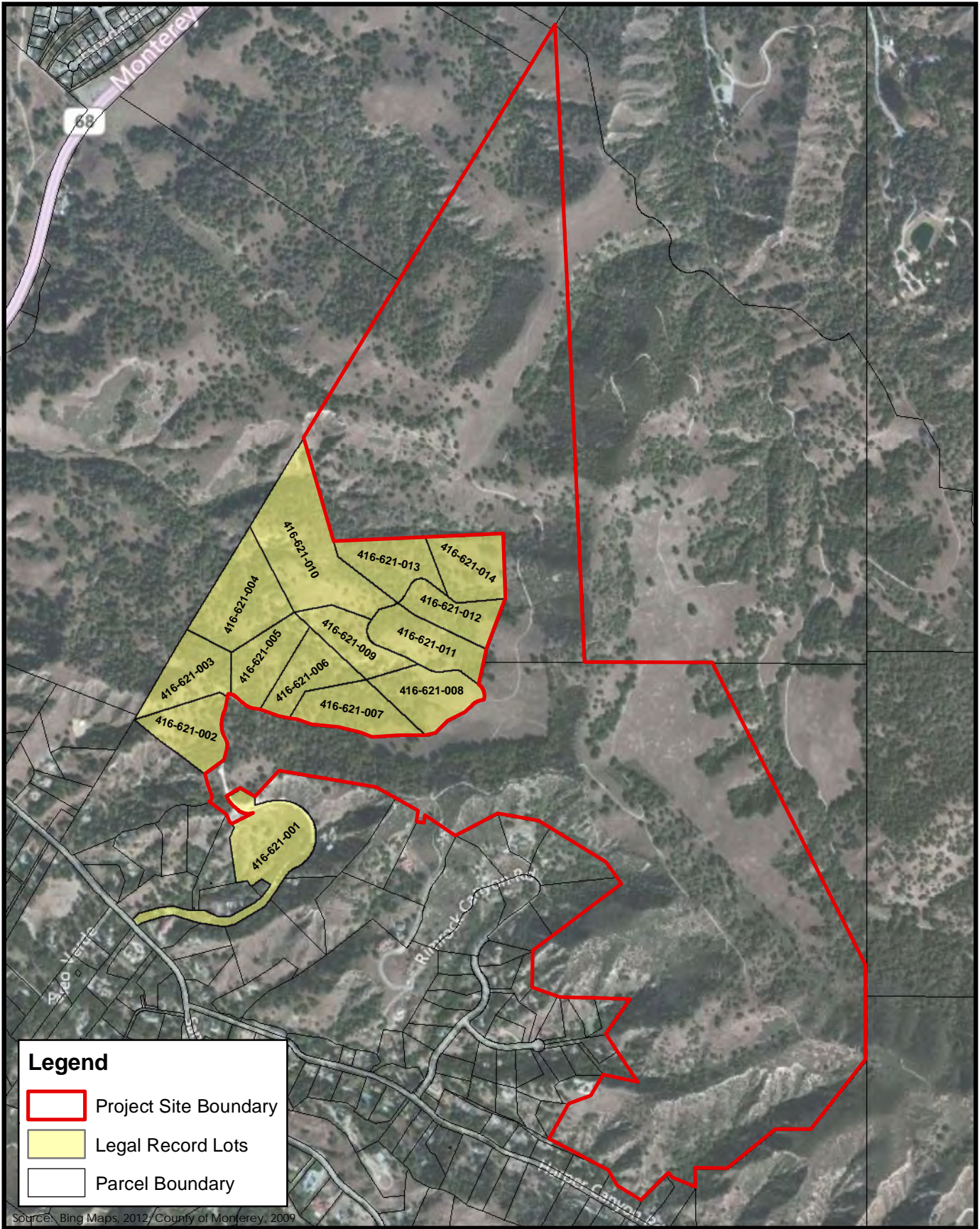


Figure MR2-1
14 Legal Lots of Record

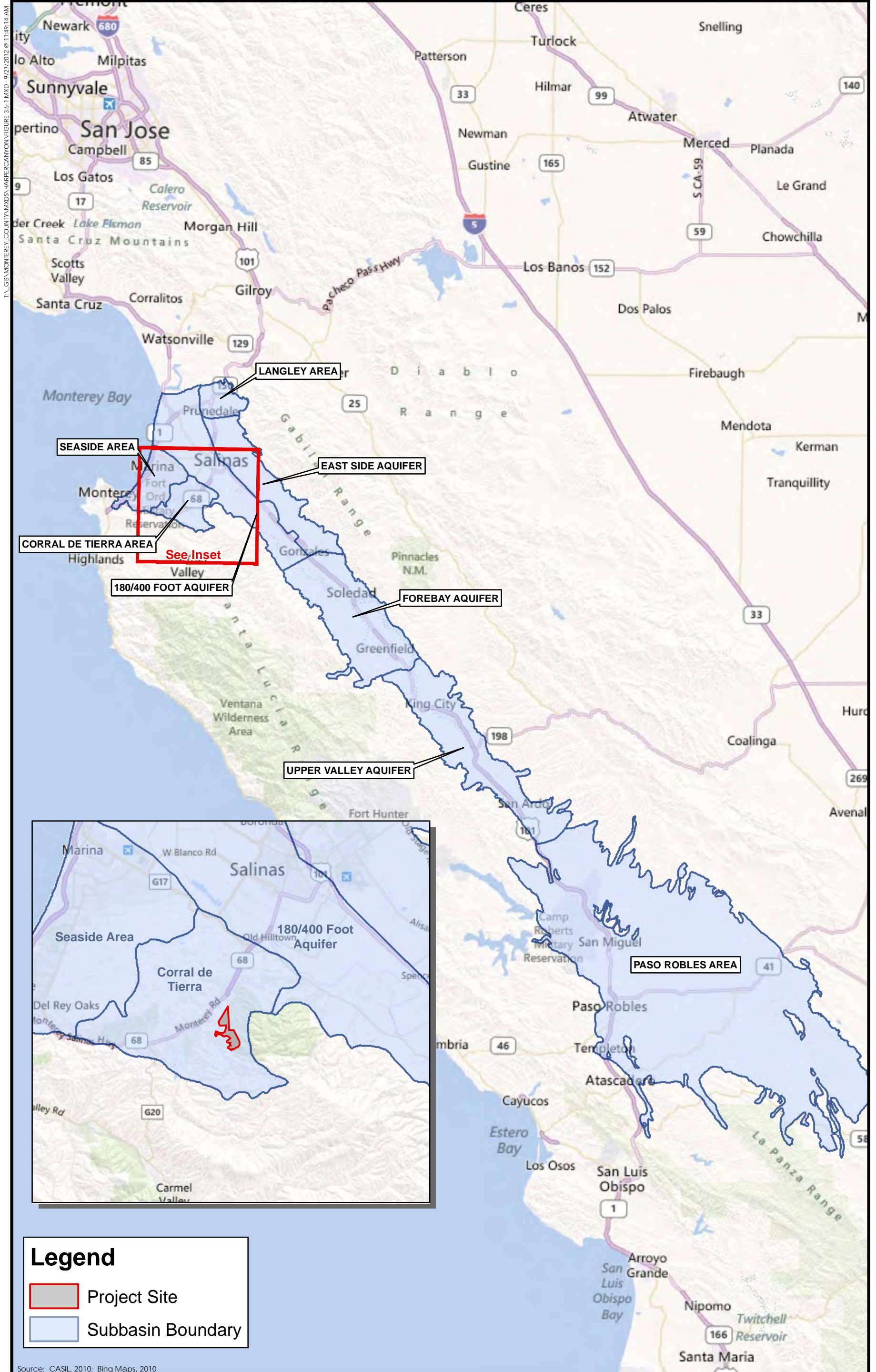


Figure 3.6-1
Groundwater Basin Map