

NOTES:  
 1. AERIAL BACKGROUND PROVIDED FROM ATLAS LAND SURVEYS, INC. 2008.  
 2. EXISTING ROADWAY SHOWN IS BASED ON TOPOGRAPHY SURVEY PERFORMED BY ATLAS LAND SURVEYS, INC., 2008.

**LEGEND:**

- = NEW PAVEMENT
- = NEW SIGN
- = NEW DELINEATOR
- XXXX = PHASE 1 IMPROVEMENTS
- XXXX = PHASE 2 IMPROVEMENTS
- XXXX = PHASE 3 IMPROVEMENTS
- XXXX = PHASE 4 IMPROVEMENTS



REVISIONS

SURVEYED BY	DAV/ANP
DRAWN BY	DAV
DATE	8/18/09
DAVID A. NACHAZEL	SURVEYOR
PLS#	7886

EXPIRES 12-31-08  
 No. 7886  
 STATE OF CALIFORNIA

12/31/2008

**Atlas Land Surveys, Inc.**  
 75 4th Street, P.O. Box 7131  
 Spreckels, CA 93962-7131  
 (phone) 831-455-8569 (fax) 831-214-6170 (cell)  
 atlasurveys@sbcglobal.net

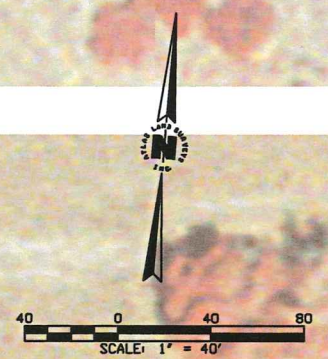
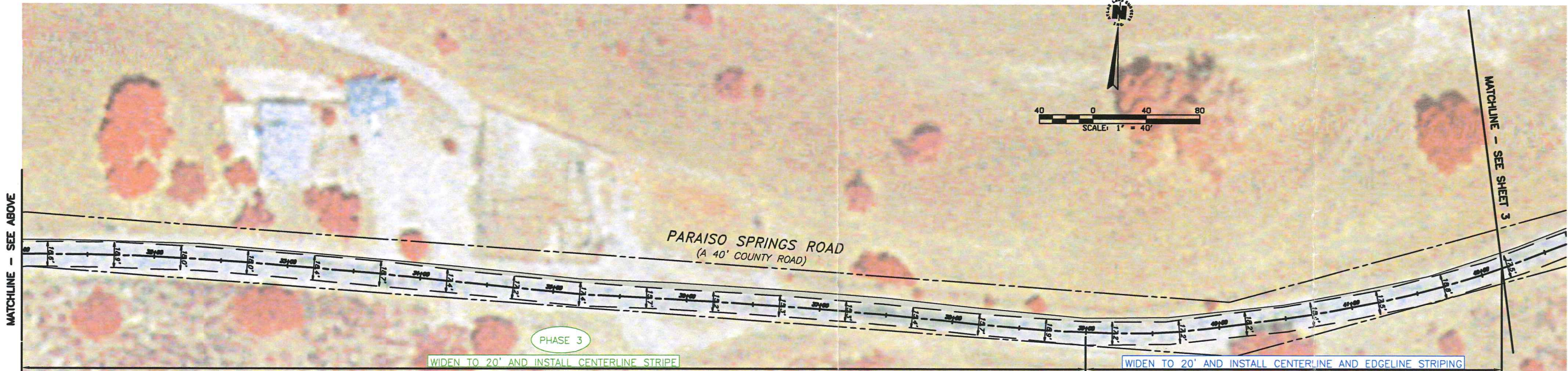
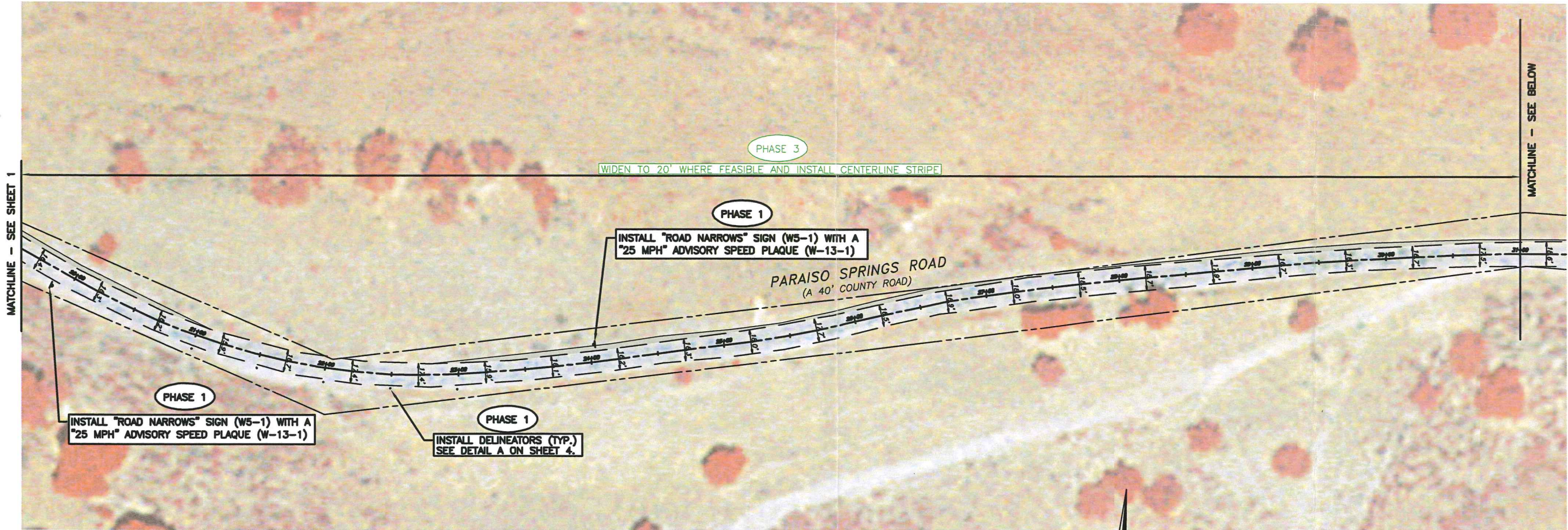
PREPARED FOR: JOHN & BILL THOMPSON

**PARAISO SPRINGS ROAD**  
**EXHIBIT OF PROPOSED IMPROVEMENTS**  
 STATION 0+00 - 20+00

CALIFORNIA  
 COUNTY OF MONTEREY

SCALE: 1" = 40'  
 DATE: 12/9/2011  
 SHEET: 1 OF 4  
 JOB: Thompson-Paraiso





**LEGEND:**

- = NEW PAVEMENT
- = NEW SIGN
- = NEW DELINEATOR

- XXXX = PHASE 1 IMPROVEMENTS
- XXXX = PHASE 2 IMPROVEMENTS
- XXXX = PHASE 3 IMPROVEMENTS
- XXXX = PHASE 4 IMPROVEMENTS

**NOTES:**  
 1. AERIAL BACKGROUND PROVIDED FROM ATLAS LAND SURVEYS, INC. 2008.  
 2. EXISTING ROADWAY SHOWN IS BASED ON TOPOGRAPHY SURVEY PERFORMED BY ATLAS LAND SURVEYS, INC., 2008.

**REVISIONS**

SURVEYED BY	DAV/AMP
DRAWN BY	DAV
DATE	8/18/09
DAVID A. NACHAZEL SURVEYOR	
PLSP	7888

**Atlas Land Surveys, Inc.**  
 75 4th Street, P.O. Box 7131  
 Spreckels, CA 93962-7131  
 831-455-9553 (phone) 831-455-8569 (fax) 831-214-6170 (cell)  
 atlasurveys@sbcglobal.net

PREPARED FOR: JOHN & BILL THOMPSON  
**PARAISO SPRINGS ROAD**  
**EXHIBIT OF PROPOSED IMPROVEMENTS**  
**STATION 20+00 - 43+00**  
 COUNTY OF MONTEREY CALIFORNIA

SCALE: 1" = 40'  
 DATE: 12/9/2011  
 SHEET:  
**2 OF 4**  
 JOB: Thompson-Paraiso



MATCHLINE - SEE SHEET 2

MATCHLINE - SEE BELOW

PARAISO SPRINGS ROAD  
(A 40' COUNTY ROAD)

PHASE 4

WIDEN TO 20' AND INSTALL CENTERLINE AND EDGELINE STRIPING

MATCHLINE - SEE ABOVE

MATCHLINE - SEE SHEET A

PARAISO SPRINGS ROAD  
(A 40' COUNTY ROAD)

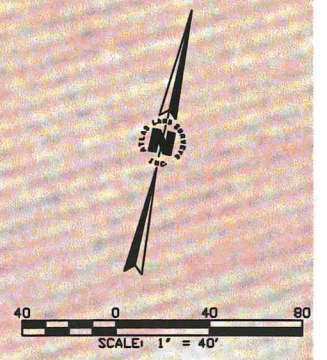
PHASE 4

WIDEN TO 20' AND INSTALL CENTERLINE AND EDGELINE STRIPING

**LEGEND:**

- = NEW PAVEMENT
- XXXX = PHASE 1 IMPROVEMENTS
- XXXX = PHASE 2 IMPROVEMENTS
- XXXX = PHASE 3 IMPROVEMENTS
- XXXX = PHASE 4 IMPROVEMENTS

**NOTES:**  
 1. AERIAL BACKGROUND PROVIDED FROM ATLAS LAND SURVEYS, INC., 2008.  
 2. EXISTING ROADWAY SHOWN IS BASED ON TOPOGRAPHY SURVEY PERFORMED BY ATLAS LAND SURVEYS, INC., 2008.



REVISIONS

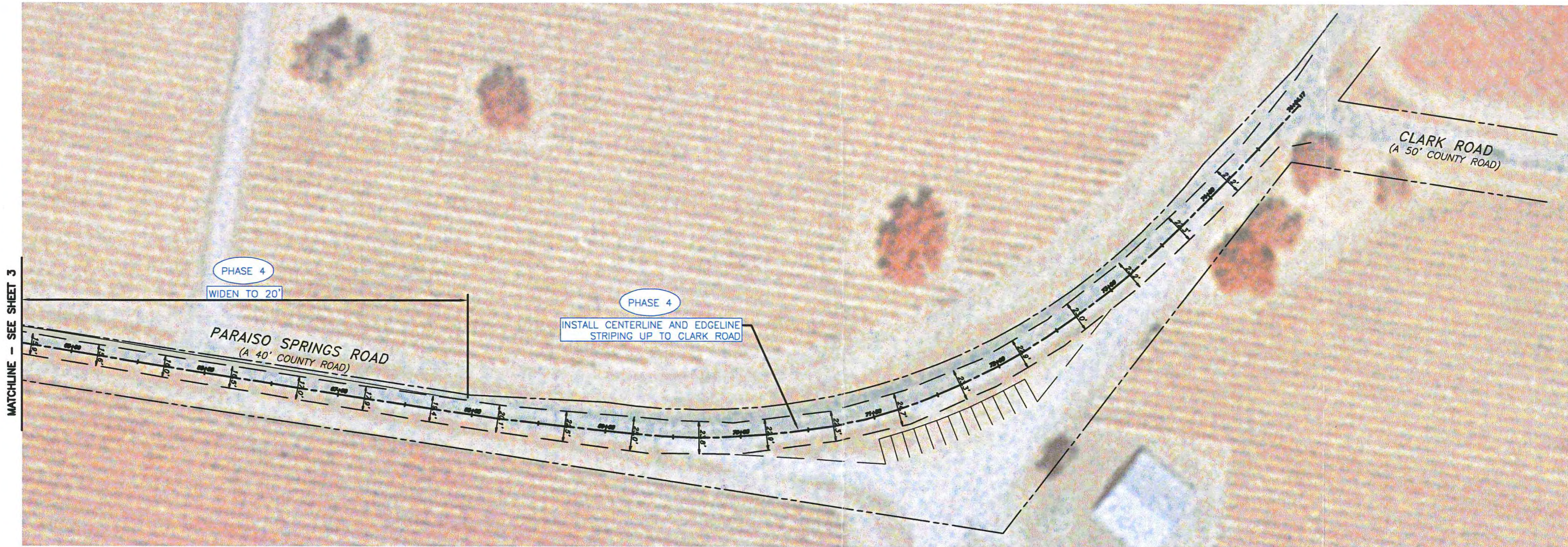
SURVEYED BY	DAN/MP
DRAWN BY	DAN
DATE	8/18/08
DAVID A. NACHAZEL SURVEYOR	
PLSP#	7888

**Atlas Land Surveys, Inc.**  
 75 4th Street, P.O. Box 7131  
 Spreckels, CA 93962-7131  
 831-455-9553 (phone) 831-455-8969 (fax) 831-214-6170 (cell)  
 atlasurveys@sbcglobal.net

PREPARED FOR: JOHN & BILL THOMPSON  
**PARAISO SPRINGS ROAD**  
**EXHIBIT OF PROPOSED IMPROVEMENTS**  
**STATION 43+00 - 65+00**  
 COUNTY OF MONTEREY CALIFORNIA

SCALE: 1" = 40'  
 DATE: 12/9/2011  
 SHEET: 3 OF 4  
 JOB: Thompson-Paraiso





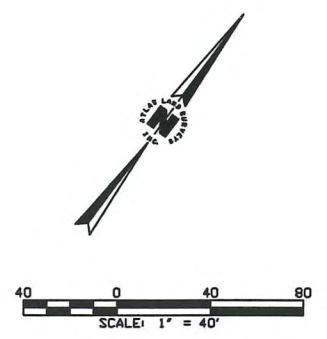
MATCHLINE - SEE SHEET 3



**DETAIL A: DELINEATOR**

- LEGEND:**
- ▭ = NEW PAVEMENT
  - XXXX = PHASE 1 IMPROVEMENTS
  - XXXX = PHASE 2 IMPROVEMENTS
  - XXXX = PHASE 3 IMPROVEMENTS
  - XXXX = PHASE 4 IMPROVEMENTS

**NOTES:**  
 1. AERIAL BACKGROUND PROVIDED FROM ATLAS LAND SURVEYS, INC. 2008.  
 2. EXISTING ROADWAY SHOWN IS BASED ON TOPOGRAPHY SURVEY PERFORMED BY ATLAS LAND SURVEYS, INC., 2008.



**REVISIONS**

SURVEYED BY	DAN/ANP
DRAWN BY	DAN
DATE	8/18/08
DAVID A. NACHHAZEL SURVEYOR	
PLSP#	7868

**Atlas Land Surveys, Inc.**  
 75 4th Street, P.O. Box 7131  
 Spreckels, CA 93962-7131  
 831-455-9553 (phone) 831-455-8589 (fax) 831-214-6170 (cell)  
 atlasurveys@sbcglobal.net

PREPARED FOR: JOHN & BILL THOMPSON  
**PARAISO SPRINGS ROAD**  
**EXHIBIT OF PROPOSED IMPROVEMENTS**  
**STATION 65+00 - 75+00**  
 COUNTY OF MONTEREY CALIFORNIA

SCALE: 1" = 40'  
 DATE: 12/9/2011  
 SHEET: 4 OF 4  
 JOB: Thompson-Paraiso