

**LEGEND:**

- = NEW PAVEMENT
- = NEW SIGN
- = NEW DELINEATOR

SOURCE: ATLAS LAND SURVEYS, INC., AUG. 18, 2008.

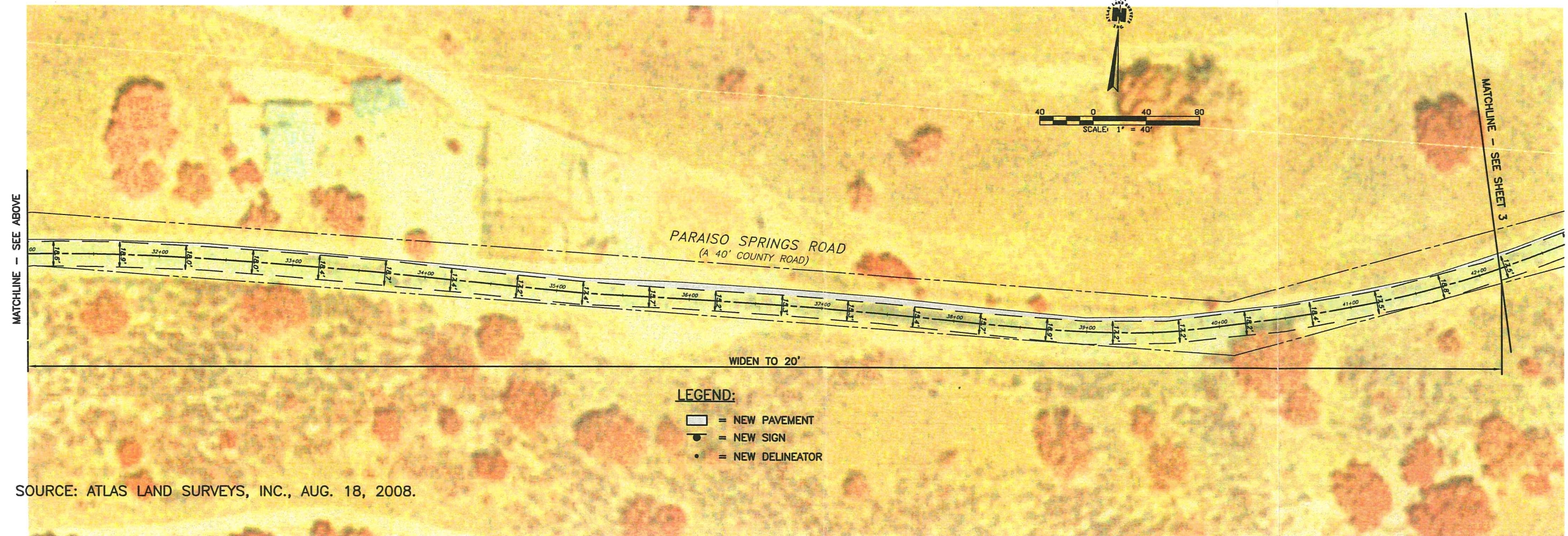
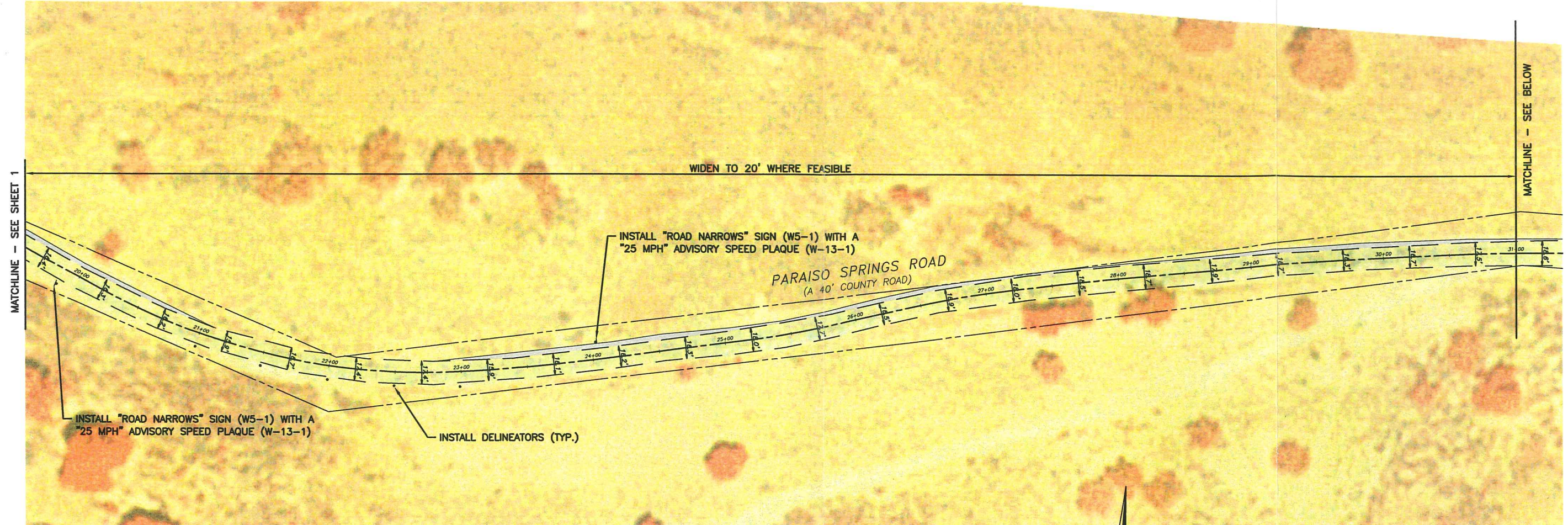


DESIGNED BY	
DRAWN BY	
DATE:	
CIVIL ENGINEER	
PE#:	
EXP:	

**Higgins Associates**  
 A Division of Hatch Mott MacDonald  
 1300-B First Street  
 Gilroy, CA 95020  
 ph 408-848-3122 fax 408-848-2202

PREPARED FOR: JOHN & BILL THOMPSON  
**PARAISO SPRINGS ROAD**  
 EXHIBIT OF EXISTING CONDITIONS  
 STATION 0+00 - 20+00  
 COUNTY OF MONTEREY CALIFORNIA

SCALE:	1" = 40'
DATE:	9/5/08
SHEET:	1 OF 4
JOB:	8-020



- LEGEND:**
- = NEW PAVEMENT
  - = NEW SIGN
  - = NEW DELINEATOR

SOURCE: ATLAS LAND SURVEYS, INC., AUG. 18, 2008.

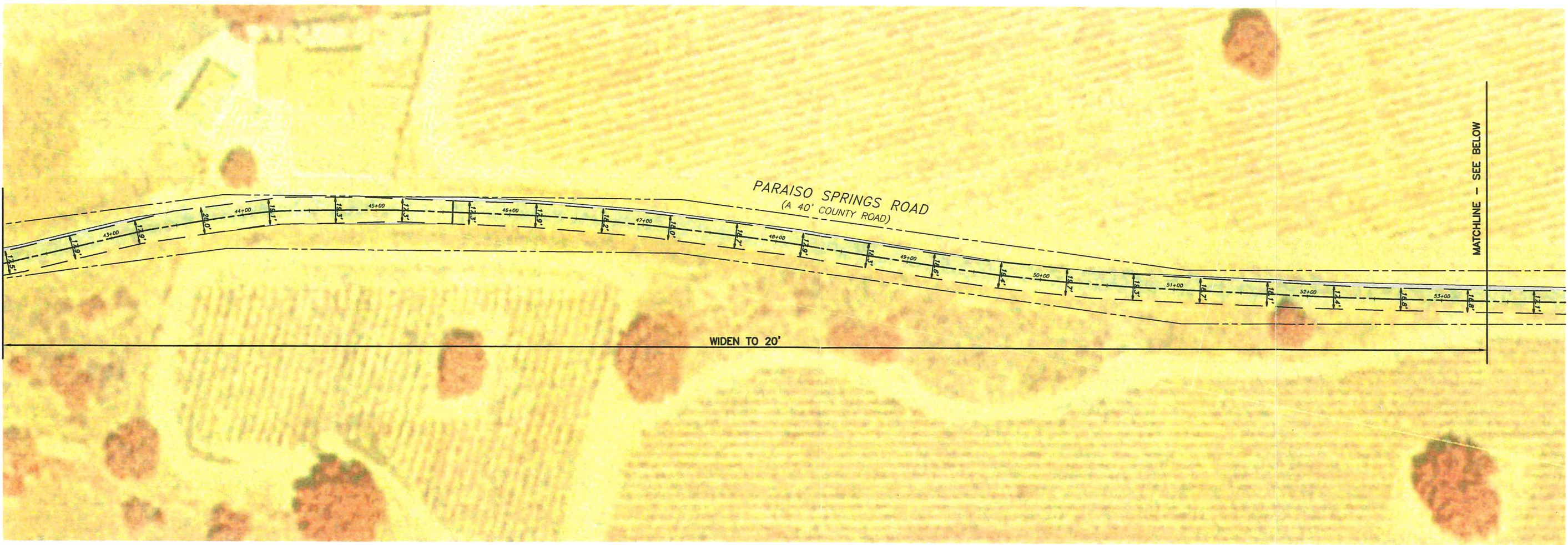
REVISIONS	
DESIGNED BY	
DRAWN BY	
DATE:	
CIVIL ENGINEER	
PE#:	
EXP:	

**Higgins Associates**  
 A Division of Hatch Mott MacDonald  
 1300-B First Street  
 Gilroy, CA 95020  
 ph 408.848.3122 fax 408.848.2202

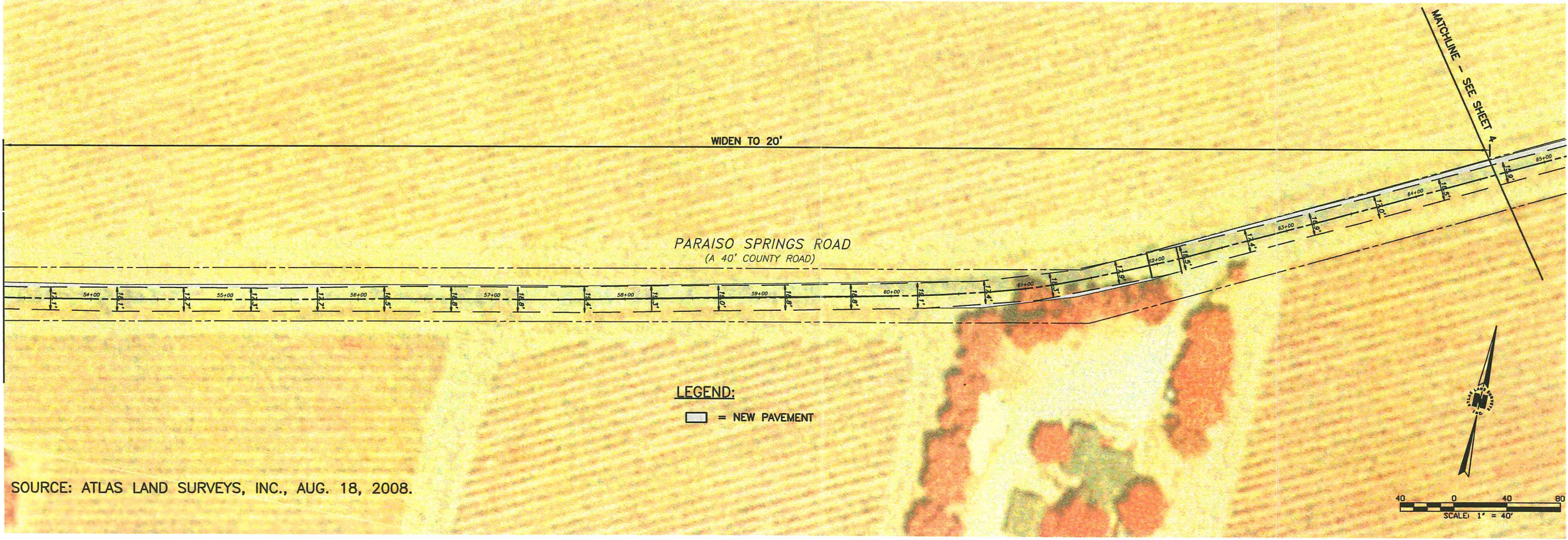
PREPARED FOR: JOHN & BILL THOMPSON  
**PARAISO SPRINGS ROAD**  
 EXHIBIT OF EXISTING CONDITIONS  
 STATION 20+00 - 43+00  
 COUNTY OF MONTEREY CALIFORNIA

SCALE:	1" = 40'
DATE:	9/5/08
SHEET:	2 OF 4
JOB:	8-020

MATCHLINE - SEE SHEET 2



MATCHLINE - SEE ABOVE

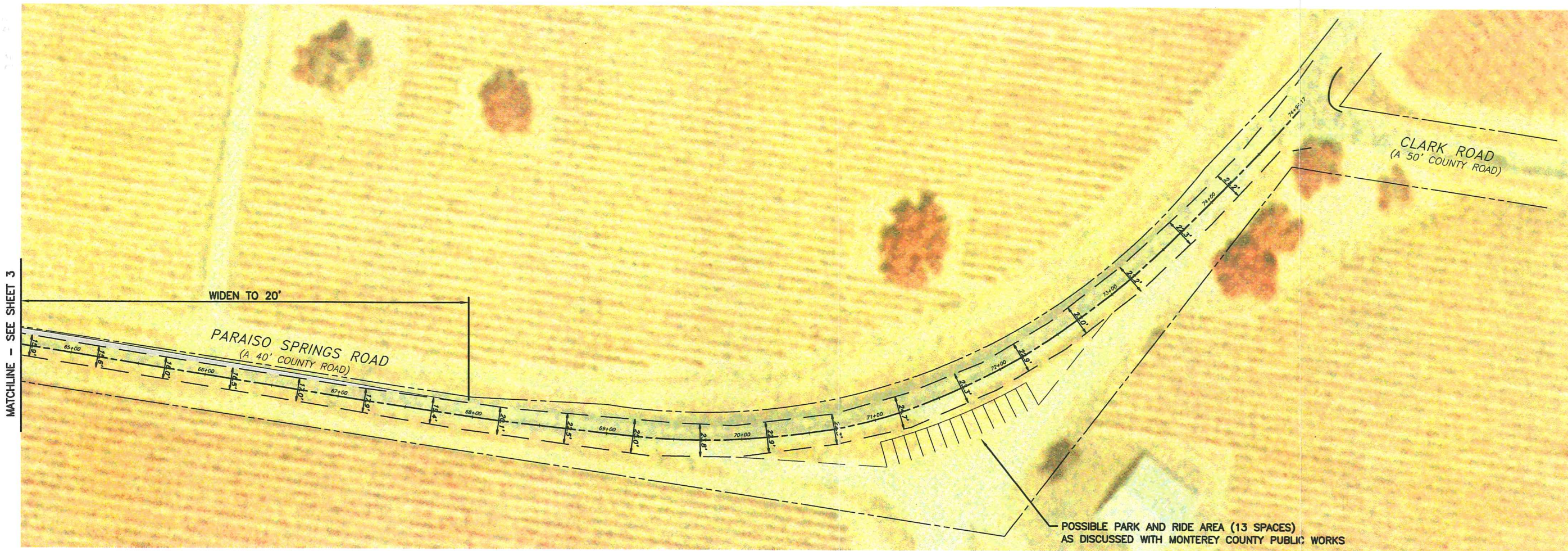


DESIGNED BY	
DRAWN BY	
DATE:	
CIVIL ENGINEER	
PE#:	
EXP:	

**Higgins Associates**  
 A Division of Hatch Mott MacDonald  
 1300-B First Street  
 Gilroy, CA 95020  
 ph 408.848.3122 fax 408.848.2202

PREPARED FOR: JOHN & BILL THOMPSON  
**PARAISO SPRINGS ROAD**  
 EXHIBIT OF EXISTING CONDITIONS  
 STATION 43+00 - 65+00  
 COUNTY OF MONTEREY  
 CALIFORNIA

SCALE:	1" = 40'
DATE:	9/5/08
SHEET:	3 OF 4
JOB:	B-020



MATCHLINE - SEE SHEET 3

WIDEN TO 20'

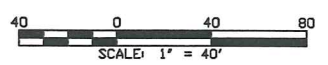
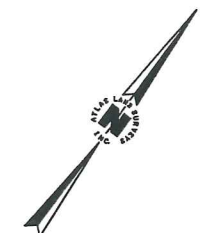
PARAISO SPRINGS ROAD  
(A 40' COUNTY ROAD)

CLARK ROAD  
(A 50' COUNTY ROAD)

POSSIBLE PARK AND RIDE AREA (13 SPACES)  
AS DISCUSSED WITH MONTEREY COUNTY PUBLIC WORKS

**LEGEND:**

□ = NEW PAVEMENT



SOURCE: ATLAS LAND SURVEYS, INC., AUG. 18, 2008.

REVISIONS	
DESIGNED BY	
DRAWN BY	
DATE:	
CIVIL ENGINEER	
PE#:	
EXP:	

**Higgins Associates**  
A Division of Hatch Mott MacDonald  
1300-B First Street  
Gilroy, CA 95020  
ph 408.848.3122 fax 408.848.2202

PREPARED FOR: JOHN & BILL THOMPSON  
**PARAISO SPRINGS ROAD**  
EXHIBIT OF EXISTING CONDITIONS  
STATION 65+00 - 75+00  
CALIFORNIA  
COUNTY OF MONTEREY

SCALE:	1" = 40'
DATE:	9/5/08
SHEET:	4 OF 4
JOB:	8-020