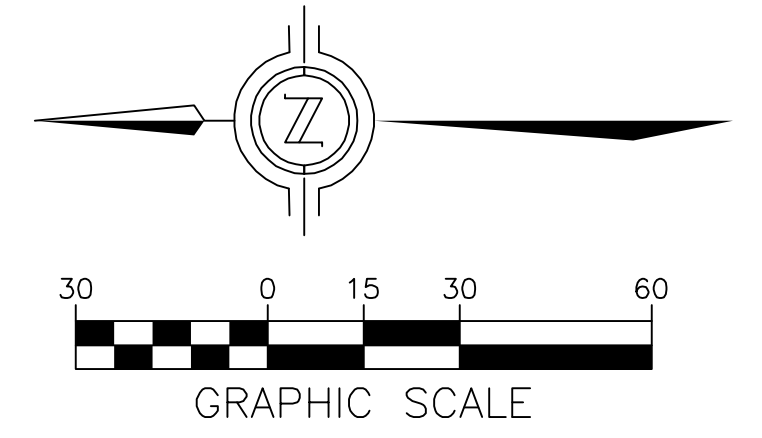


REMOVE TREES TO
IMPROVE LINE OF SIGHT
AT PROPOSED INTERSECTION

TREE REMOVAL

PINE TREES*	
4"-11" DIAMETER	= 8
12"-23" DIAMETER	= 61
24" & GREATER DIAMETER	= 64
OAK TREES*	
4"-11" DIAMETER	= 548
12"-23" DIAMETER	= 35
24" & GREATER DIAMETER	= 0

* TREE REMOVAL BASED UPON FIELD SURVEY.



© 2013 PEBBLE BEACH COMPANY, ALL RIGHTS RESERVED

F+H
Fletcher + Hardoin
Architects
760 Pacific Street
Menlo Park, CA 94025
831-373-5855
www.fletcherhardoin.com

LS ENGINEERING AND SURVEYING, INC.
2460 Garden Road, Suite G, Monterey, California 93940
P: 831.655.2723 F: 831.655.3425
LandEngineers.com

PEBBLE BEACH COMPANY
P.O. BOX 1767 PEBBLE BEACH, CALIFORNIA 93953
(831) 624-8900
PARCEL INFORMATION: 008-041-009
PARCEL 6, VOLUME 15, CITIES AND TOWNS, PAGE 52

AREA D
DEL MONTE FOREST PRESERVATION AND DEVELOPMENT PLAN
AREA D INCLUSIONARY HOUSING
TREE REMOVAL PLAN

IH-5.1
DATE: JULY 2013

LAND DISTURBANCE

2.609 acres

EARTHWORK

CUT = 3,050 CY
 FILL = 3,050 CY
 NET = 0 CY*

* EARTHWORK QUANTITIES AS CALCULATED BY THE ENGINEER ARE TO FINISHED GRADE. THESE ARE ESTIMATES ONLY.

IMPERVIOUS AREA

NEW HARDSCAPE/PARKING LOT = 38,682 SQFT
 NEW STRUCTURES = 22,794 SQFT

OFF-SITE UTILITIES

PROPOSED WATER SUPPLY BY CALIFORNIA AMERICAN WATER SUPPLY COMPANY AND PROPOSED SEWAGE DISPOSAL BY PEBBLE BEACH COMMUNITY SERVICES DISTRICT.

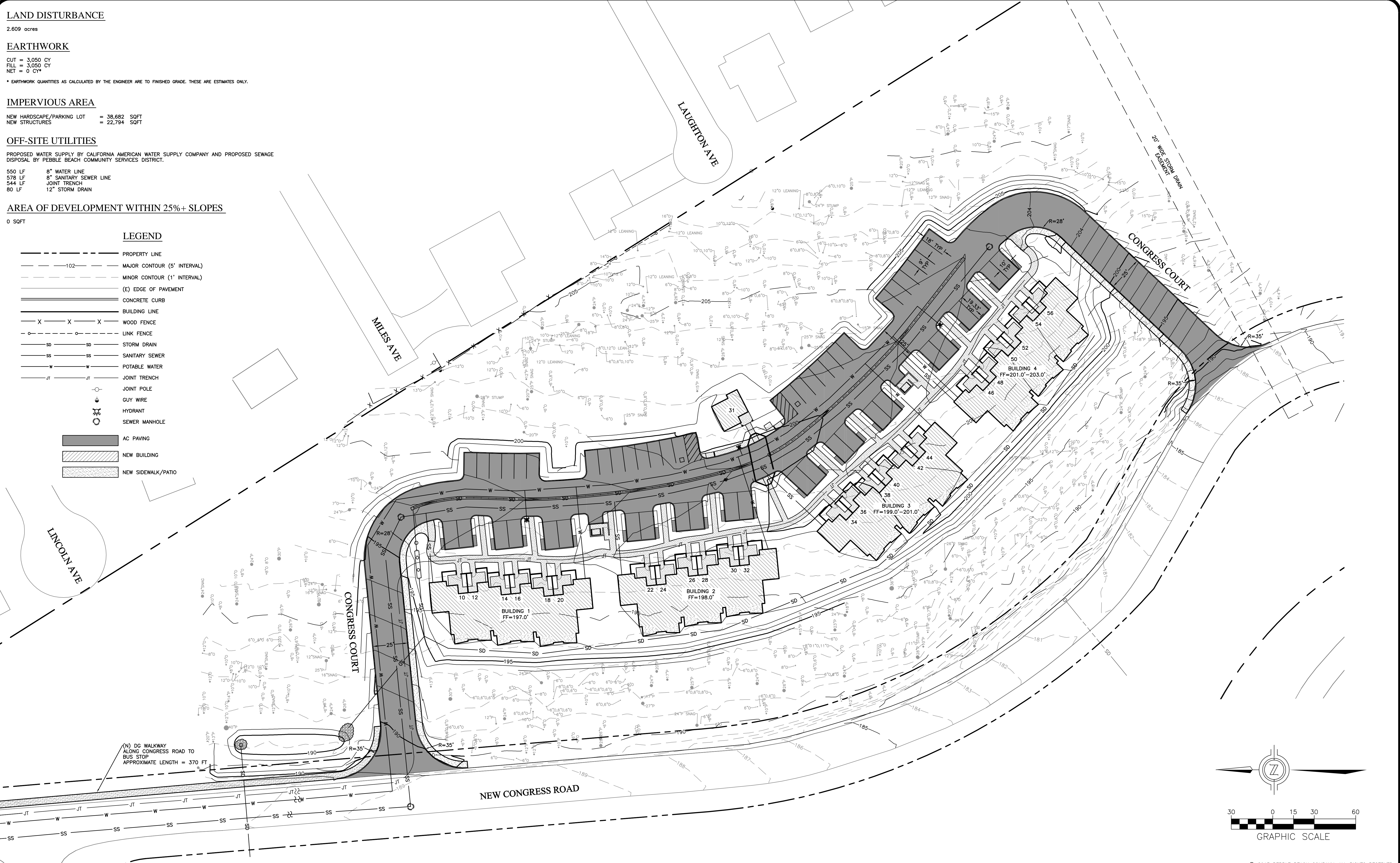
550 LF 8" WATER LINE
 578 LF 8" SANITARY SEWER LINE
 544 LF JOINT TRENCH
 80 LF 12" STORM DRAIN

AREA OF DEVELOPMENT WITHIN 25%+ SLOPES

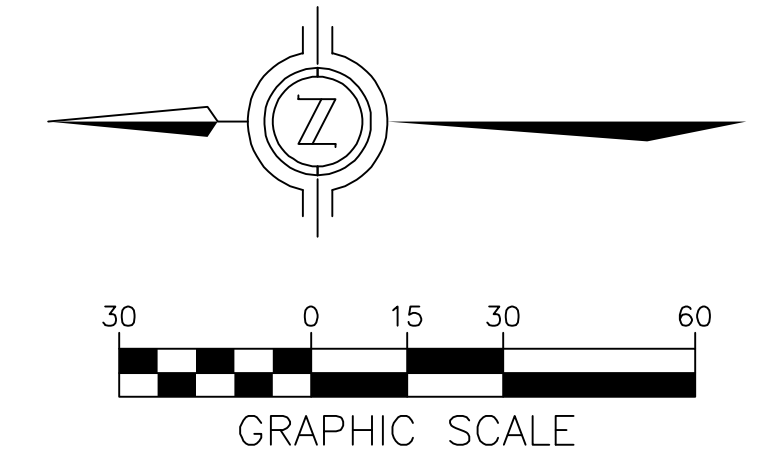
0 SQFT

LEGEND

- PROPERTY LINE
- - - - - MAJOR CONTOUR (5' INTERVAL)
- - - - - MINOR CONTOUR (1' INTERVAL)
- (E) EDGE OF PAVEMENT
- ==== CONCRETE CURB
- ==== BUILDING LINE
- X X X WOOD FENCE
- - - - - LINK FENCE
- SD SD STORM DRAIN
- SS SS SANITARY SEWER
- W W POTABLE WATER
- JT JT JOINT TRENCH
- JOINT POLE
- GUY WIRE
- HYDRANT
- SEWER MANHOLE
- AC PAVING
- ▨ NEW BUILDING
- ▨ NEW SIDEWALK/PATIO



(N) DC WALKWAY ALONG CONGRESS ROAD TO BUS STOP APPROXIMATE LENGTH = 370 FT



© 2013 PEBBLE BEACH COMPANY, ALL RIGHTS RESERVED

F+H
 Fletcher + Hardoin
 Architects
 769 Pacific Street
 Monterey, CA 93940
 831-373-5855
 www.fletcherhardoin.com

ENGINEERING AND SURVEYING, INC.
 2469 Garden Road, Suite G, Monterey, California 93940
 P: 831.655.2723 F: 831.655.3425
 LandEngineers.com

PEBBLE BEACH COMPANY
 P.O. BOX 1767 PEBBLE BEACH, CALIFORNIA 93953
 (831) 624-8900
 PARCEL INFORMATION: 008-041-009
 PARCEL 6, VOLUME 15, CITIES AND TOWNS, PAGE 52

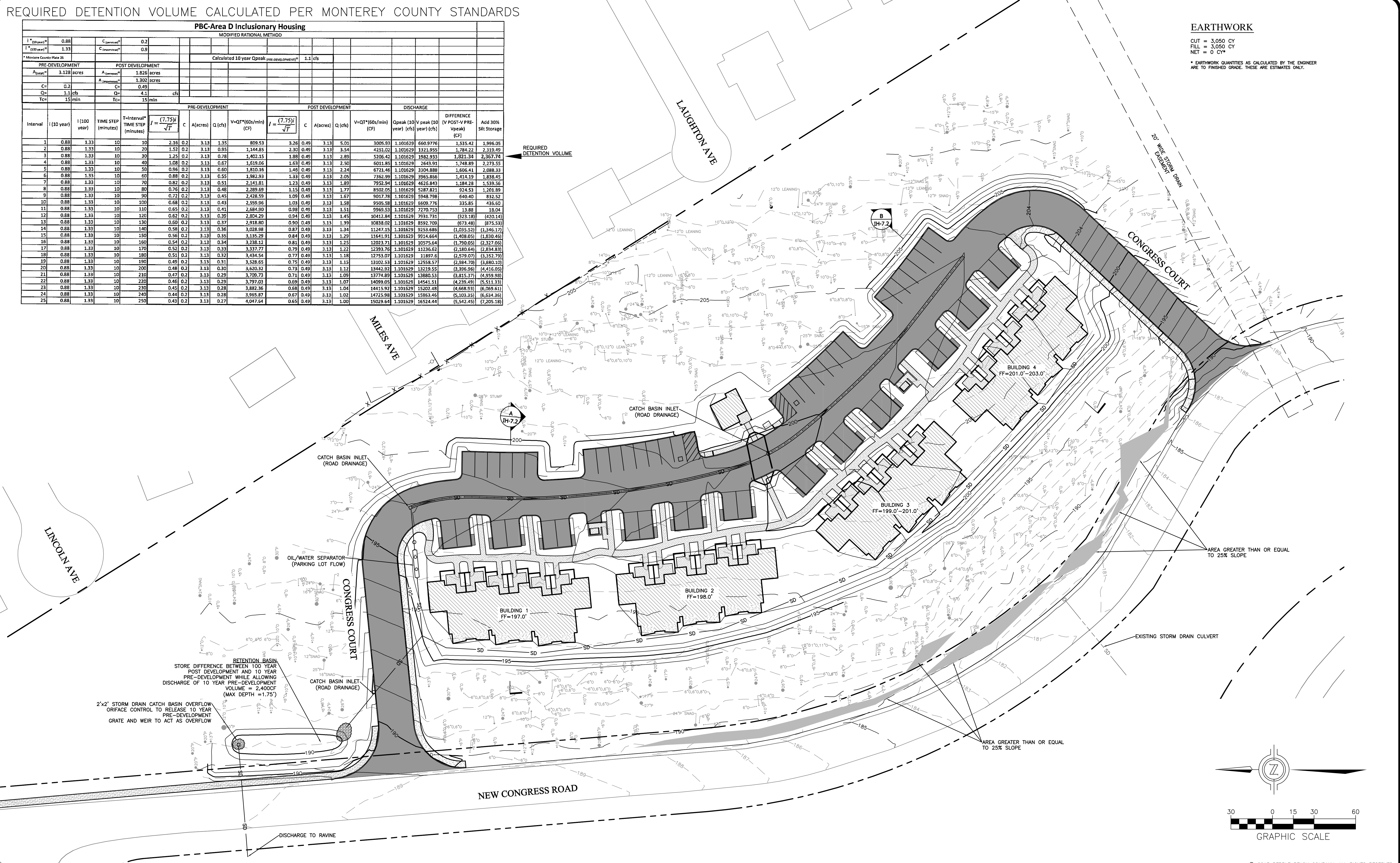
AREA D
 DEL MONTE FOREST PRESERVATION AND DEVELOPMENT PLAN
 AREA D INCLUSIONARY HOUSING
 PRELIMINARY SITE LAYOUT PLAN

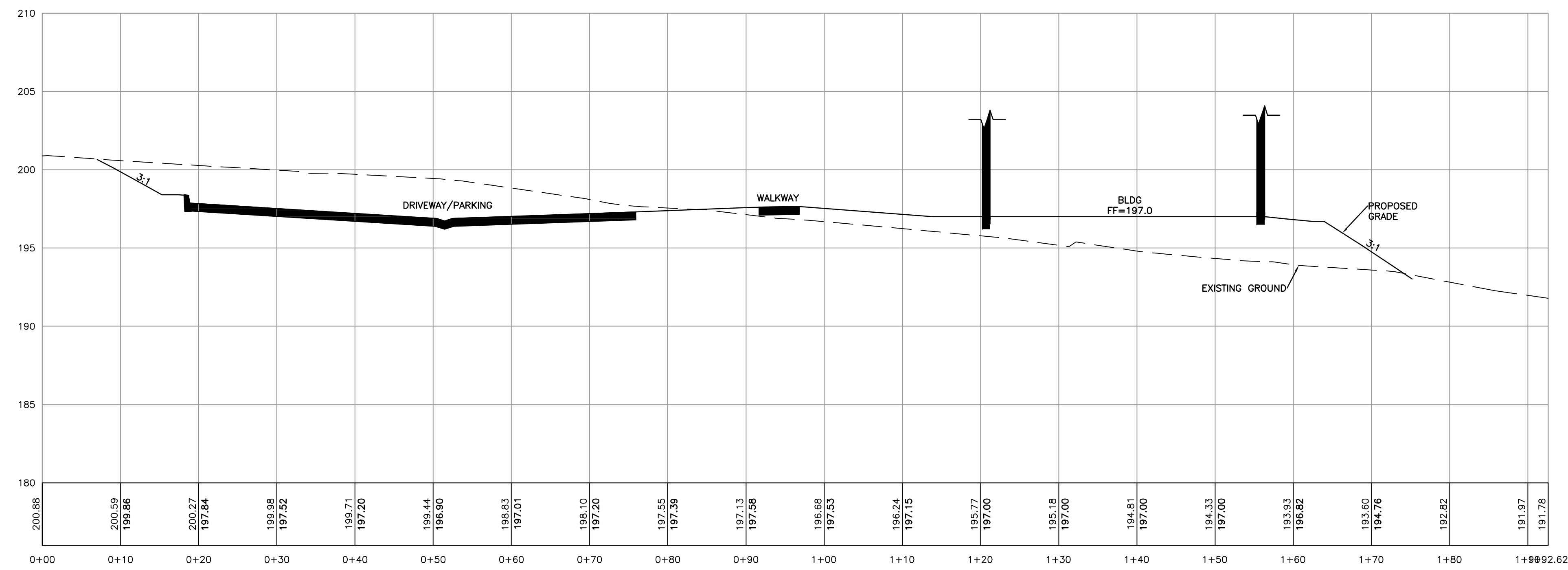
IH-6.1
 DATE: JULY 2013

REQUIRED DETENTION VOLUME CALCULATED PER MONTEREY COUNTY STANDARDS

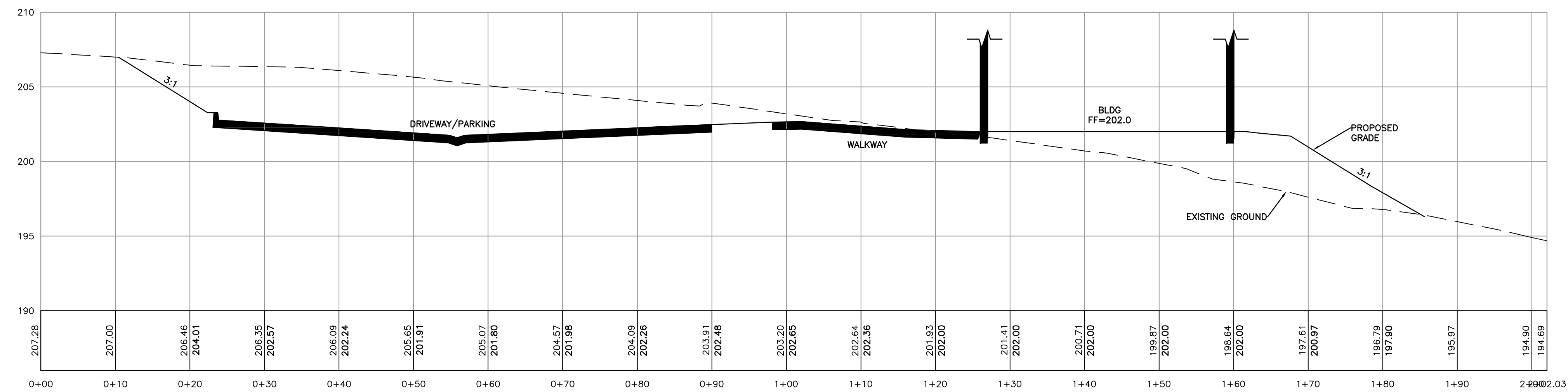
PBC-Area D Inclusionary Housing																		
MODIFIED RATIONAL METHOD																		
$I_{(10\text{ year})}^*$	0.88	$C_{(pre-dev)}$	0.2															
$I_{(100\text{ year})}^*$	1.33	$C_{(post-dev)}$	0.9															
* Monterey County Plate 25				Calculated 10 year C_{peak} (see development) 1.1 cfs														
PRE-DEVELOPMENT			POST DEVELOPMENT			DISCHARGE			DIFFERENCE (V POST-V PRE-V PRE)									
$A_{pre-dev}$	3.128 acres	$A_{post-dev}$	1.826 acres															
$C_{pre-dev}$	0.2	$C_{post-dev}$	0.49															
$Q_{pre-dev}$	1.1 cfs	$Q_{post-dev}$	4.1 cfs															
$T_{c,pre-dev}$	15 min	$T_{c,post-dev}$	15 min															
Interval	(10 year)	(100 year)	TIME STEP (minutes)	T-Interval TIME STEP (minutes)	$I = \frac{(7.75)I_p}{\sqrt{T}}$	C	A (acres)	Q (cfs)	$V=QT^2(60\text{ s/min})$ (CF)	$I = \frac{(7.75)I_p}{\sqrt{T}}$	C	A (acres)	Q (cfs)	$V=QT^2(60\text{ s/min})$ (CF)	Qpeak (10 year) (cfs)	Qpeak (100 year) (cfs)	DIFFERENCE (V POST-V PRE-V PRE)	Add 30% Silt Storage (CF)
1	0.88	1.33	10	10	2.16	0.2	3.13	1.35	809.53	3.26	0.49	3.13	5.01	3005.93	1.101629	660.9776	1.535.42	1,896.05
2	0.88	1.33	10	20	1.52	0.2	3.13	0.95	1,144.85	2.30	0.49	3.13	3.54	4251.02	1.101629	1321.955	1,784.22	2,319.49
3	0.88	1.33	10	30	1.25	0.2	3.13	0.78	1,402.15	1.89	0.49	3.13	2.89	5206.42	1.101629	1982.933	1,821.34	2,367.74
4	0.88	1.33	10	40	1.08	0.2	3.13	0.67	1,619.06	1.63	0.49	3.13	2.50	6011.85	1.101629	2643.91	1,748.89	2,273.55
5	0.88	1.33	10	50	0.96	0.2	3.13	0.60	1,810.16	1.46	0.49	3.13	2.24	6721.46	1.101629	3304.888	1,606.41	2,088.33
6	0.88	1.33	10	60	0.88	0.2	3.13	0.55	1,982.93	1.33	0.49	3.13	2.05	7362.99	1.101629	3965.856	1,414.19	1,858.45
7	0.88	1.33	10	70	0.82	0.2	3.13	0.51	2,141.81	1.23	0.49	3.13	1.89	7952.94	1.101629	4626.847	1,184.28	1,533.56
8	0.88	1.33	10	80	0.76	0.2	3.13	0.48	2,289.69	1.15	0.49	3.13	1.77	8502.05	1.101629	5287.821	924.53	1,201.89
9	0.88	1.33	10	90	0.72	0.2	3.13	0.45	2,428.59	1.09	0.49	3.13	1.67	9017.78	1.101629	5948.798	640.40	832.52
10	0.88	1.33	10	100	0.68	0.2	3.13	0.43	2,559.96	1.03	0.49	3.13	1.58	9505.58	1.101629	6609.776	335.85	436.60
11	0.88	1.33	10	110	0.65	0.2	3.13	0.41	2,684.90	0.98	0.49	3.13	1.51	9969.53	1.101629	7270.753	13.88	18.04
12	0.88	1.33	10	120	0.62	0.2	3.13	0.39	2,804.29	0.94	0.49	3.13	1.45	10412.84	1.101629	7931.731	(523.18)	(420.14)
13	0.88	1.33	10	130	0.60	0.2	3.13	0.37	2,918.80	0.90	0.49	3.13	1.39	10838.02	1.101629	8592.709	(673.48)	(875.53)
14	0.88	1.33	10	140	0.58	0.2	3.13	0.36	3,028.98	0.87	0.49	3.13	1.34	11247.15	1.101629	9253.686	(1,035.52)	(1,346.17)
15	0.88	1.33	10	150	0.56	0.2	3.13	0.35	3,135.29	0.84	0.49	3.13	1.29	11641.91	1.101629	9914.664	(1,408.05)	(1,830.46)
16	0.88	1.33	10	160	0.54	0.2	3.13	0.34	3,238.12	0.81	0.49	3.13	1.25	12033.71	1.101629	10575.64	(1,790.05)	(2,327.05)
17	0.88	1.33	10	170	0.52	0.2	3.13	0.33	3,337.77	0.79	0.49	3.13	1.22	12393.76	1.101629	11236.62	(2,180.64)	(2,834.83)
18	0.88	1.33	10	180	0.51	0.2	3.13	0.32	3,434.54	0.77	0.49	3.13	1.18	12753.07	1.101629	11897.6	(2,579.07)	(3,352.79)
19	0.88	1.33	10	190	0.49	0.2	3.13	0.31	3,528.65	0.75	0.49	3.13	1.15	13102.53	1.101629	12558.57	(2,984.70)	(3,880.10)
20	0.88	1.33	10	200	0.48	0.2	3.13	0.30	3,620.32	0.73	0.49	3.13	1.12	13443.92	1.101629	13219.55	(3,396.96)	(4,416.93)
21	0.88	1.33	10	210	0.47	0.2	3.13	0.29	3,709.73	0.71	0.49	3.13	1.09	13774.89	1.101629	13880.53	(3,815.37)	(4,959.98)
22	0.88	1.33	10	220	0.46	0.2	3.13	0.29	3,797.03	0.69	0.49	3.13	1.07	14099.05	1.101629	14541.51	(4,239.49)	(5,511.33)
23	0.88	1.33	10	230	0.45	0.2	3.13	0.28	3,882.36	0.68	0.49	3.13	1.04	14415.92	1.101629	15202.48	(4,668.93)	(6,069.61)
24	0.88	1.33	10	240	0.44	0.2	3.13	0.28	3,965.87	0.67	0.49	3.13	1.02	14725.98	1.101629	15863.46	(5,103.51)	(6,634.36)
25	0.88	1.33	10	250	0.43	0.2	3.13	0.27	4,047.64	0.65	0.49	3.13	1.00	15029.64	1.101629	16524.44	(5,542.45)	(7,205.18)

EARTHWORK
 CUT = 3,050 CY
 FILL = 3,050 CY
 NET = 0 CY*
 * EARTHWORK QUANTITIES AS CALCULATED BY THE ENGINEER ARE TO FINISHED GRADE. THESE ARE ESTIMATES ONLY.





A
 SITE CROSS SECTION - LOOKING SOUTH
 IH-7.2
 SCALE: 1"=10' HORIZONTAL, 1"=5' VERTICAL



B
 SITE CROSS SECTION - LOOKING SOUTHEAST
 IH-7.2
 SCALE: 1"=10' HORIZONTAL, 1"=5' VERTICAL

© 2013 PEBBLE BEACH COMPANY, ALL RIGHTS RESERVED

F+H
 Fletcher + Hardoin
 Architects
 769 Pacific Street
 Monterey, CA 93940
 831-373-5855
 www.fletcherhardoin.com

LS ENGINEERING AND SURVEYING, INC.
 2480 Garden Road, Suite G, Monterey, California 93940
 P: 831.655.2723 F: 831.655.3425
 LandEngineers.com

PEBBLE BEACH COMPANY
 P.O. BOX 1767 PEBBLE BEACH, CALIFORNIA 93953
 (831) 624-8900
 PARCEL INFORMATION: 008-041-009
 PARCEL 6, VOLUME 15, CITIES AND TOWNS, PAGE 52

AREA D
 DEL MONTE FOREST PRESERVATION AND DEVELOPMENT PLAN
 AREA D INCLUSIONARY HOUSING
 SITE CROSS SECTIONS

IH-7.2
 DATE: JULY 2013

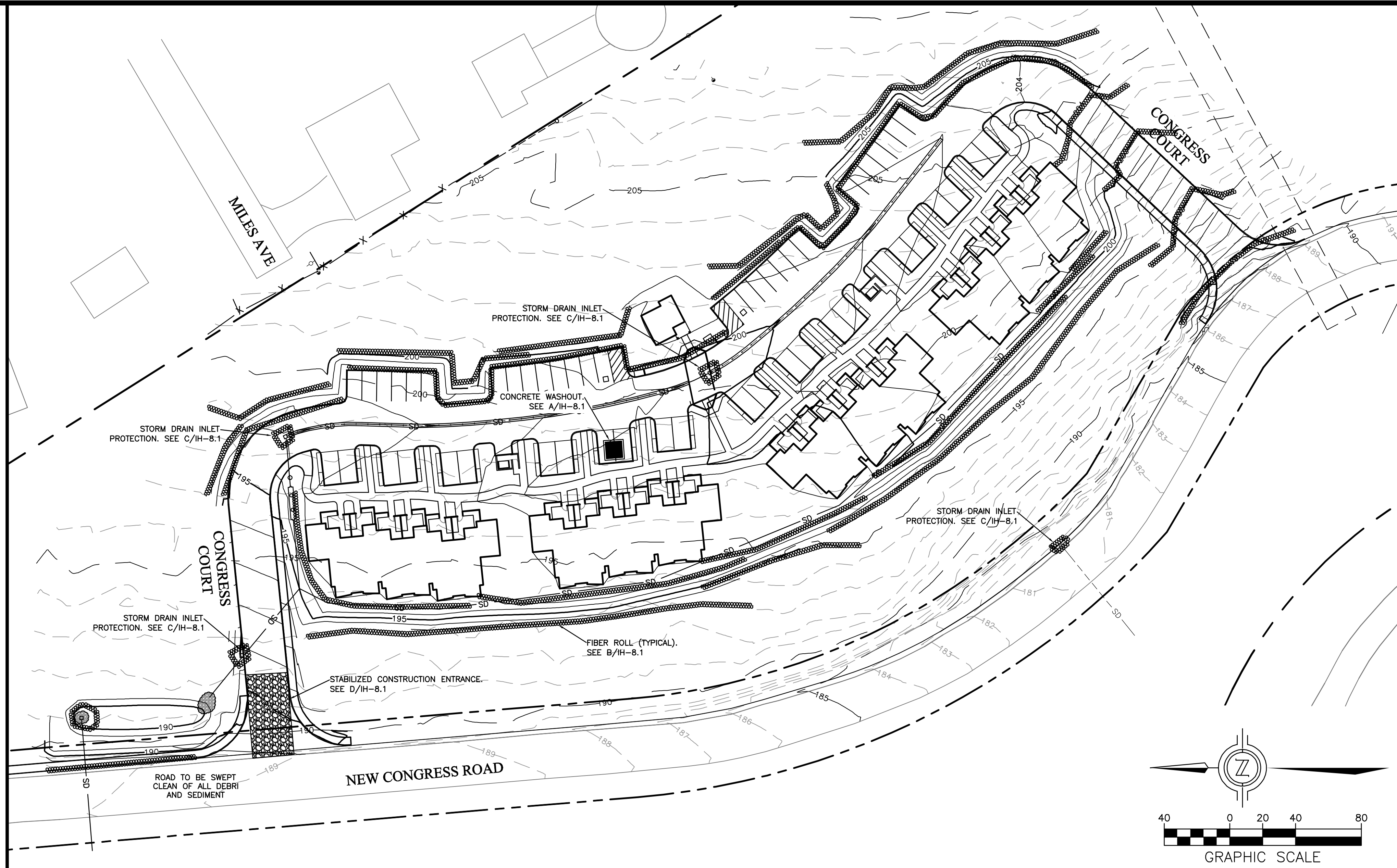
EROSION AND SEDIMENT CONTROL MEASURES

- EROSION AND SEDIMENT CONTROL MEASURES SHALL BE IMPLEMENTED BY OCTOBER 1st AND MAINTAINED THROUGH APRIL 30th, OR AS DIRECTED BY THE COUNTY ENGINEER.
- PERSON RESPONSIBLE FOR IMPLEMENTATION OF EROSION CONTROL AND SEDIMENT PLAN:
NAME: _____
ADDRESS: _____
PHONE: _____
- THIS EROSION AND SEDIMENT CONTROL PLAN COVERS ONLY THE FIRST WINTER FOLLOWING GRADING. INTERIM PLANS ARE TO BE RESUBMITTED FOR CITY APPROVAL PRIOR TO SEPTEMBER 1st OF EACH SUBSEQUENT YEAR, UNTIL THE SITE IMPROVEMENTS ARE ACCEPTED BY THE COUNTY.
- WINTER GRADING OPERATIONS, OCTOBER 1st THROUGH APRIL 30th
WHEN WINTER GRADING OPERATIONS TAKE PLACE, THE FOLLOWING MEASURES ARE REQUIRED MUST BE TAKEN TO MITIGATE ACCELERATED EROSION:
 - VEGETATION REMOVAL BETWEEN OCTOBER 1st AND APRIL 30th SHALL NOT PRECEDE SUBSEQUENT GRADING OR CONSTRUCTION ACTIVITIES BY MORE THAN 15 DAYS. DURING THIS PERIOD, EROSION AND SEDIMENT CONTROL MEASURES SHALL BE IN PLACE.
 - BETWEEN OCTOBER 1st AND APRIL 30th, DISTURBED SURFACES NOT INVOLVED IN THE IMMEDIATE OPERATIONS MUST BE PROTECTED BY MULCHING AND/OR OTHER EFFECTIVE MEANS OF SOIL PROTECTION.
 - RUN-OFF FROM THE SITE SHALL BE DETAINED OR FILTERED BY BERMS, VEGETATED FILTER STRIPS AND/OR CATCH BASINS TO PREVENT THE ESCAPE OF SEDIMENT FROM THE DISTURBED AREA OR SITE. THESE DRAINAGE CONTROL MEASURES MUST BE MAINTAINED BY THE CONTRACTOR AS NECESSARY TO ACHIEVE THEIR PURPOSE THROUGHOUT THE LIFE OF THE PROJECT.
 - EROSION AND SEDIMENT CONTROL MEASURES SHALL BE IN PLACE AT THE END OF EACH DAY'S WORK.
 - THE GRADING INSPECTOR MAY STOP OPERATIONS DURING PERIODS OF INCLEMENT WEATHER IF EROSION PROBLEMS ARE NOT BEING CONTROLLED ADEQUATELY.
- NOT USED
- ALL EROSION CONTROL MEASURES SHALL BE MAINTAINED UNTIL DISTURBED AREAS ARE STABILIZED. CHANGES TO THIS EROSION AND SEDIMENT CONTROL PLAN SHALL BE MADE TO MEET FIELD CONDITIONS ONLY WITH THE APPROVAL OF OR AT THE DIRECTION OF THE COUNTY.
- DURING RAINY SEASON ALL PAVED AREAS SHALL BE KEPT CLEAR OF THE EARTH MATERIAL AND DEBRIS. THE SITE SHALL BE MAINTAINED SO AS TO MINIMIZE SEDIMENT-LADEN RUNOFF TO ANY STORM DRAINAGE SYSTEM. STRAW BALE SILT TRAPS SHALL BE INSTALLED AT PLACES ANTICIPATING SEDIMENT-LADEN RUNOFF TO A PAVED INLET.
- ALL EROSION CONTROL FACILITIES MUST BE INSPECTED AND REPAIRED AT THE END OF EACH WORKING DAY DURING THE RAINY SEASON.
- THIS EROSION AND SEDIMENT CONTROL PLAN MAY NOT COVER ALL SITUATIONS THAT MAY ARISE DURING CONSTRUCTION DUE TO ANTICIPATED FIELD CONDITIONS. VARIATIONS MAY BE MADE TO THIS PLAN IN THE FIELD, SUBJECT TO THE APPROVAL OF THE DIRECTOR OF BUILDING, COUNTY OF MONTEREY.
- THIS PLAN IS INTENDED TO BE USED FOR INTERIM EROSION AND SEDIMENT CONTROL ONLY.
- ALL SLOPES SHOWN TO BE HYDROSEED ON THE EROSION CONTROL PLAN SHEETS SHALL BE HYDROSEED WITH AN APPROVED HYDROSEED MIXTURE.
- ALSO SEE THE STORM WATER POLLUTION PREVENTION PLAN (SWPPP) PREPARED FOR THIS PROJECT FOR ADDITIONAL MONITORING AND INSPECTION REQUIREMENTS.
- WATER ALL ACTIVE CONSTRUCTION AREAS AT LEAST TWICE DAILY OR MORE OFTEN AS NEEDED TO PREVENT DUST FROM BECOMING AIRBORNE AND LEAVING THE SITE.
- COVER ALL TRUCKS HAULING SOIL, SAND AND OTHER LOOSE MATERIALS OR REQUIRE ALL TRUCKS TO MAINTAIN AT LEAST TWO FEET OF FREEBOARD.
- PAVE, APPLY WATER THREE TIMES DAILY, OR APPLY (NON-TOXIC) SOIL STABILIZERS ON ALL UNPAVED ACCESS ROADS, PARKING AREAS AND STAGING AREAS AT CONSTRUCTION SITES.
- SWEEP DAILY (WITH WATER SWEEPERS) ALL PAVED ACCESS ROADS, PARKING AREAS AND STAGING AREAS AT CONSTRUCTION SITES.
- SWEEP STREETS DAILY (WITH WATER SWEEPERS) IF VISIBLE SOIL MATERIAL IS CARRIED ONTO ADJACENT PUBLIC STREETS.
- HYDROSEED OR APPLY (NON-TOXIC) SOIL STABILIZERS TO INACTIVE CONSTRUCTION AREAS (BUILDING PADS AND STREETS MAY BE EXCLUDED)
- ENCLOSE, COVER, WATER TWICE DAILY OR APPLY (NON-TOXIC) SOIL BINDERS TO EXPOSED STOCKPILES (DIRT, SAND, ETC.)
- LIMIT TRAFFIC SPEEDS ON UNPAVED ROADS TO 15 MILES PER HOUR.
- RE-VEGETATE IN DISTURBED AREAS AS QUICKLY AS POSSIBLE.

MATERIAL DELIVERY AND STORAGE

- LIQUIDS, PETROLEUM PRODUCTS, AND SUBSTANCES LISTED IN 40 CFR PARTS 110, 117, OR 302 SHOULD BE STORED IN APPROVED CONTAINERS AND DRUMS AND SHOULD NOT BE OVERFILLED. CONTAINERS AND DRUMS SHOULD BE PLACED IN TEMPORARY CONTAINMENT FACILITIES FOR STORAGE.
- TEMPORARY CONTAINMENT FACILITY SHOULD PROVIDE FOR A SPILL CONTAINMENT VOLUME ABLE TO CONTAIN PRECIPITATION FROM A 25 YEAR STORM EVENT, PLUS THE AGGREGATE VOLUME OF ALL CONTAINERS OR 100% OF THE CAPACITY OF THE LARGEST CONTAINER WITHIN ITS BOUNDARY, WHICHEVER IS GREATER.
- A TEMPORARY CONTAINMENT FACILITY SHOULD BE IMPERVIOUS TO THE MATERIALS STORED THEREIN FOR A MINIMUM CONTACT TIME OF 72 HOURS.
- A TEMPORARY CONTAINMENT FACILITY SHOULD BE MAINTAINED FREE OF ACCUMULATED RAINWATER AND SPILLS. IN THE EVENT OF SPILLS OR LEAKS, ACCUMULATED RAINWATER SHOULD BE COLLECTED AND PLACED INTO DRUMS. THESE LIQUIDS SHOULD BE HANDLED AS A HAZARDOUS WASTE UNLESS TESTING DETERMINES THEM TO BE NON-HAZARDOUS. ALL COLLECTED LIQUIDS OR NON-HAZARDOUS LIQUIDS SHOULD BE SENT TO AN APPROVED DISPOSAL SITE.
- SUFFICIENT SEPARATION SHOULD BE PROVIDED BETWEEN STORED CONTAINERS TO ALLOW FOR SPILL CLEANUP AND EMERGENCY RESPONSE ACCESS.
- INCOMPATIBLE MATERIALS, SUCH AS CHLORINE AND AMMONIA, SHOULD NOT BE STORED IN THE SAME TEMPORARY CONTAINMENT FACILITY.
- THROUGHOUT THE RAINY SEASON, EACH TEMPORARY CONTAINMENT FACILITY SHOULD BE COVERED DURING NON-WORKING DAYS, PRIOR TO, AND DURING RAIN EVENTS.
- MATERIALS SHOULD BE STORED IN THEIR ORIGINAL CONTAINERS AND THE ORIGINAL PRODUCT LABELS SHOULD BE MAINTAINED IN PLACE IN A LEGIBLE CONDITION. DAMAGED OR OTHERWISE ILLEGIBLE LABELS SHOULD BE REPLACED IMMEDIATELY.
- BAGGED AND BOXED MATERIALS SHOULD BE STORED ON PALLETS AND SHOULD NOT BE ALLOWED TO ACCUMULATE ON THE GROUND. TO PROVIDE PROTECTION FROM WIND AND RAIN THROUGHOUT THE RAINY SEASON, BAGGED AND BOXED MATERIALS SHOULD BE COVERED DURING NON-WORKING DAYS AND PRIOR TO AND DURING RAIN EVENTS.
- STOCKPILES SHOULD BE PROTECTED IN ACCORDANCE WITH CALIFORNIA STORM WATER QUALITY HANDBOOK CONSTRUCTION PRACTICES WM-3, STOCKPILE MANAGEMENT.
- MATERIALS SHOULD BE STORED INDOORS WITHIN EXISTING STRUCTURES OR SHEDS WHEN AVAILABLE.
- PROPER STORAGE INSTRUCTIONS SHOULD BE POSTED AT ALL TIMES IN AN OPEN AND CONSPICUOUS LOCATIONS.
- AN AMPLE SUPPLY OF APPROPRIATE SPILL CLEAN MATERIAL SHOULD BE KEPT NEAR STORAGE AREAS.
- KEEP AN ACCURATE, UP-TO-DATE INVENTORY OF MATERIAL DELIVERED AND STORED ONSITE.
- ARRANGE FOR EMPLOYEES TRAINED IN EMERGENCY SPILL CLEANUP PROCEDURES TO BE PRESENT WHEN DANGEROUS MATERIALS OR LIQUID CHEMICALS ARE UNLOADED.

NOTE:
1. CONTRACTOR TO USE FUTURE PARKING LOT AREA FOR STOCKPILING AND EQUIPMENT STORAGE. SILT FENCING TO BE INSTALLED AROUND THE ENTIRE PERIMETER OF ALL STOCKPILES AND ALL STOCKPILES TO BE COVER WHEN NOT IN IMMEDIATE USE.
2. CONSTRUCTION CREW PARKING TO BE ON-SITE. FUTURE PARKING LOT AREA TO BE USE FOR PARKING.



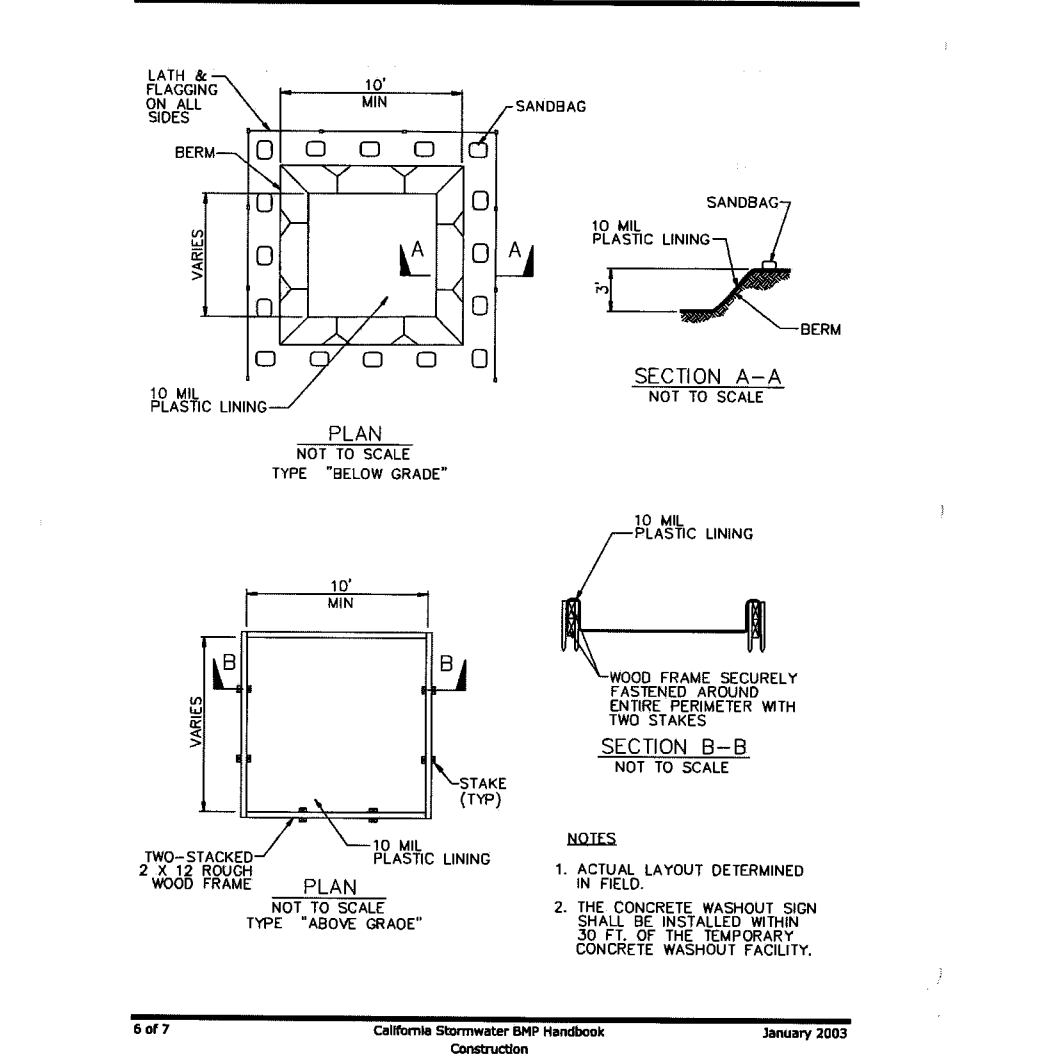
INLET PROTECTION WITH GRAVEL BAG BARRIER

- IF GRAVEL BAGS BECOME CLOGGED WITH SEDIMENT, THEY MUST BE CAREFULLY REMOVED AND REPLACED WITH COMPETENT GRAVEL BAGS.
- THE INLET PROTECTION SHOULD BE REMOVED 30 DAYS AFTER THE UPSLOPE AREA HAS BEEN FULLY STABILIZED. ANY SEDIMENT AROUND THE INLET MUST BE CAREFULLY REMOVED AND PROPERLY DISPOSED.

CONCRETE WASHOUT

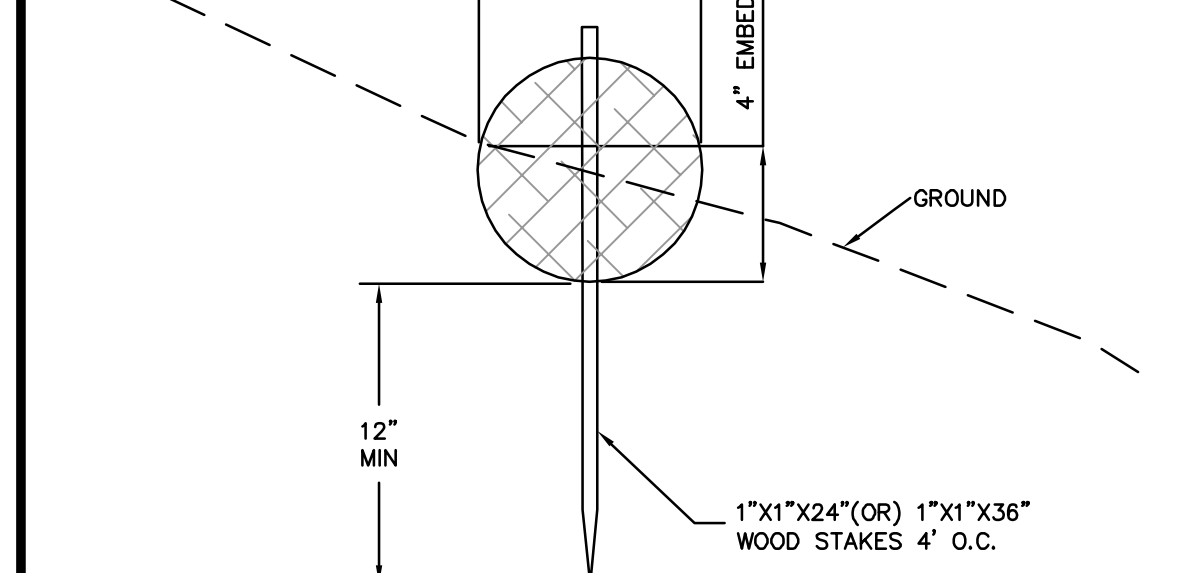
- TEMPORARY CONCRETE WASHOUT FACILITIES SHOULD BE LOCATED A MINIMUM OF 50 FT FROM STORM DRAIN INLETS, OPEN DRAINAGE FACILITIES, AND WATERCOURSES. EACH FACILITY SHOULD BE LOCATED AWAY FROM CONSTRUCTION TRAFFIC OR ACCESS AREAS TO PREVENT DISTURBANCE OR TRACKING.
- A SIGN SHOULD BE INSTALLED ADJACENT TO EACH WASHOUT FACILITY TO INFORM CONCRETE EQUIPMENT OPERATORS TO UTILIZE THE PROPER FACILITIES.
- TEMPORARY CONCRETE WASHOUT FACILITIES SHOULD BE CONSTRUCTED ABOVE GRADE OR BELOW GRADE AT THE OPTION OF THE CONTRACTOR. TEMPORARY CONCRETE WASHOUT FACILITIES SHOULD BE CONSTRUCTED AND MAINTAINED IN SUFFICIENT QUANTITY AND SIZE TO CONTAIN ALL LIQUID AND CONCRETE WASTE GENERATED BY WASHOUT OPERATIONS.
- TEMPORARY WASHOUT FACILITIES SHOULD HAVE A TEMPORARY PIT OR BERMED AREAS OF SUFFICIENT VOLUME TO COMPLETELY CONTAIN ALL LIQUID AND WASTE CONCRETE MATERIALS GENERATED DURING WASHOUT PROCEDURES.
- WASHOUT OF CONCRETE TRUCKS SHOULD BE PERFORMED IN DESIGNATED AREAS ONLY.
- ONLY CONCRETE FROM MIXER TRUCK CHUTES SHOULD BE WASHED INTO CONCRETE WASHOUT.
- CONCRETE WASHOUT FROM CONCRETE PUMPER BINS CAN BE WASHED INTO CONCRETE PUMPER TRUCKS AND DISCHARGED INTO DESIGNATED WASHOUT AREA OR PROPERLY DISPOSED OF OFFSITE.
- ONCE CONCRETE WASTES ARE WASHED INTO THE DESIGNATED AREA AND ALLOWED TO HARDEN, THE CONCRETE SHOULD BE BROKEN UP, REMOVED, AND DISPOSED OF PER PROPER WASTE MANAGEMENT PROCEDURES. DISPOSE OF HARDENED CONCRETE ON A REGULAR BASIS.

WM-8 Concrete Waste Management



A CONCRETE WASHOUT
IH-8.1 NOT TO SCALE

FIBER ROLL

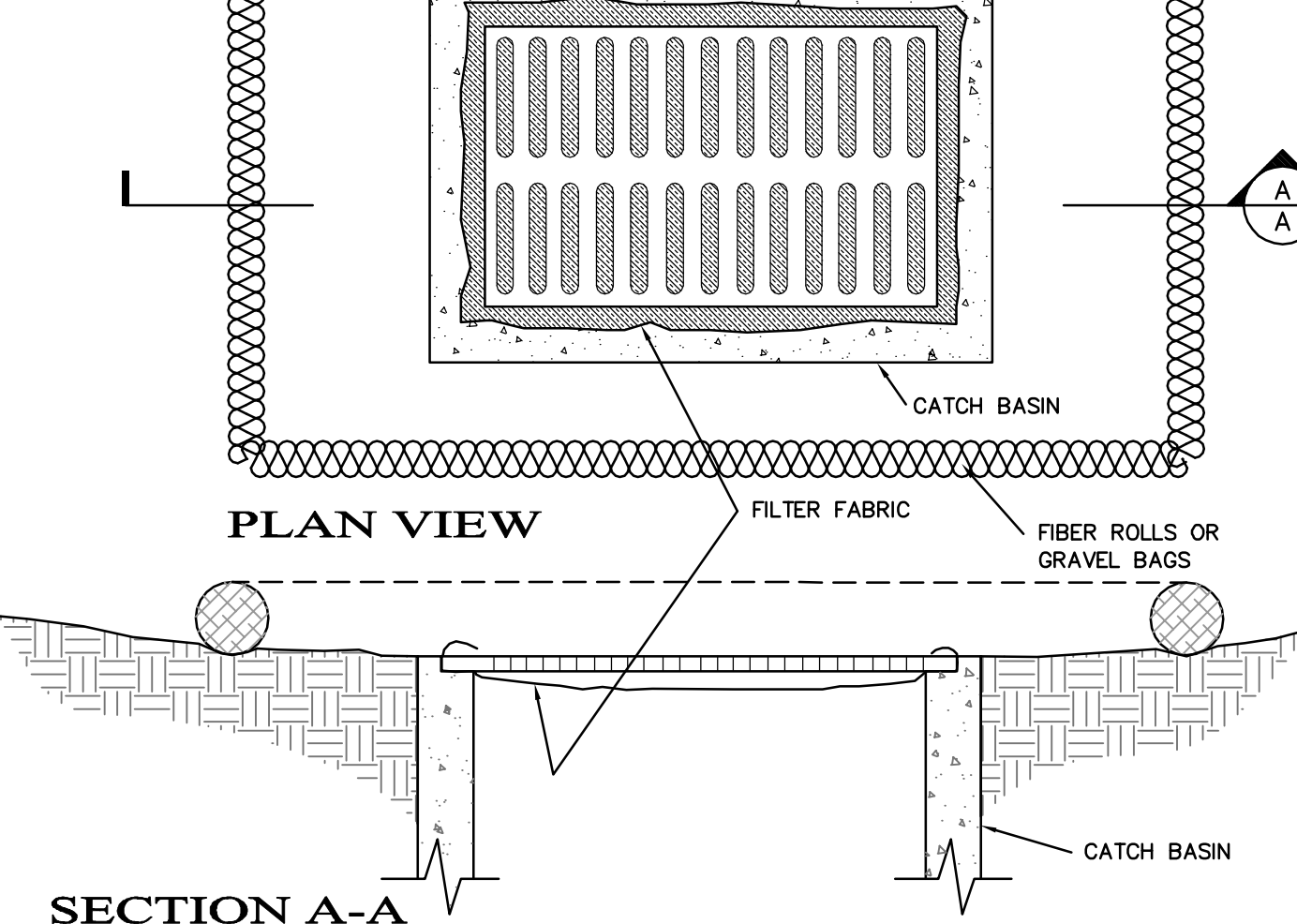


TO BE USED ALONG THE FACE OF EXPOSED AND ERODIBLE SLOPES TO SHORTEN SLOPE LENGTH, AT GRADE BREAKS WHERE SLOPES TRANSITION TO A STEEPER SLOPE, IN DRAINAGE SWALES TO SLOW FLOWS, AND ALONG STREAM BANKS TO ASSIST STABILIZATION AND REVEGETATION.

- INSTALLATION**
- USE 1"x1"x2" OR 1"x1"x3" WOOD STAKES, DEPENDING ON THE SOIL AND SLOPE CONDITIONS. USE LONGER STAKES IN LOOSE SOIL, SHORTER STAKES IN DENSER SOILS.
 - POSITION FIBER ROLLS END-TO-END, TYING THE BUTTED ENDS TOGETHER WITH STRONG TWINE TO ENSURE A GOOD CONNECTION.
 - PLACE FIBER ROLLS SECURELY IN A TRENCH SO THAT SILT LADEN RUN-OFF PASSES OVER OR THROUGH, NOT UNDER THE FIBER ROLL.
 - FIBER ROLLS TO BE PLACED AT THE TOPS AND BOTTOMS OF ALL EXPOSED SLOPES. FOR SLOPES GREATER THAN 10' HORIZONTALLY FIBER ROLLS SHALL BE PLACED AT INTERVALS OF 10' DOWN SLOPE FROM EACH OTHER.

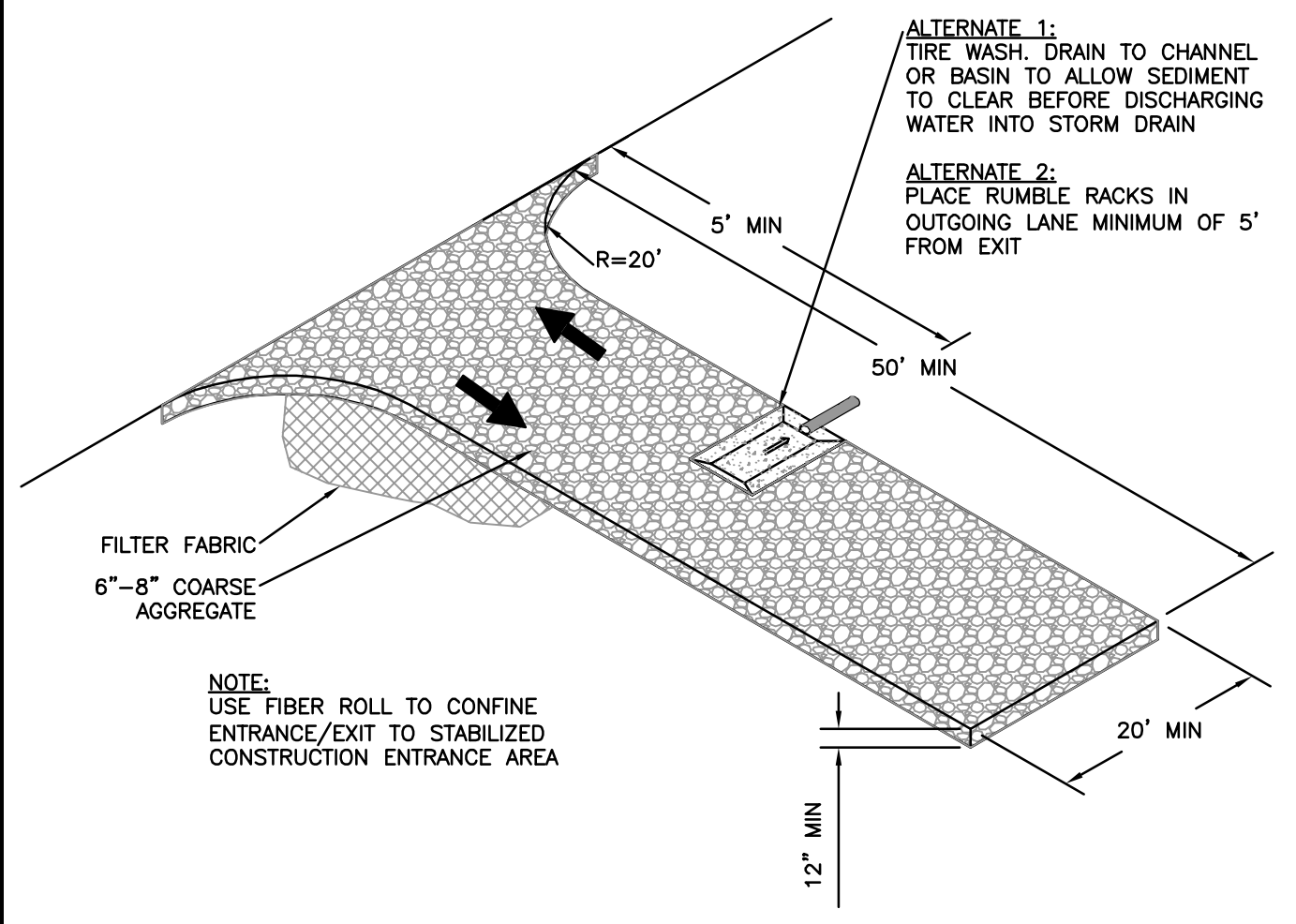
B FIBER ROLL
IH-8.1 NOT TO SCALE

STORM DRAIN INLET PROTECTION

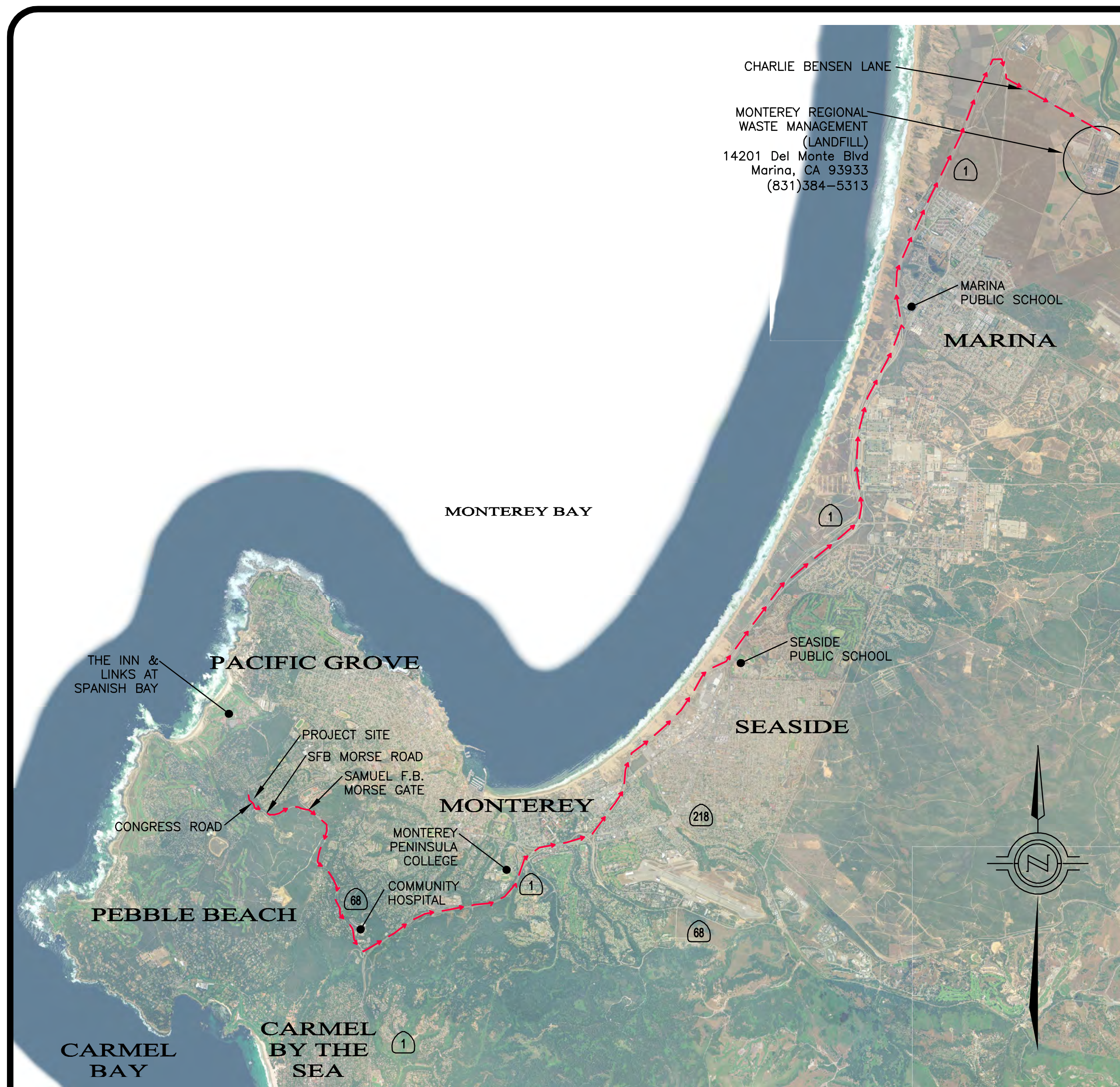


C STORM DRAIN INLET PROTECTION
IH-8.1 NOT TO SCALE

STABILIZED CONSTRUCTION ENTRANCE

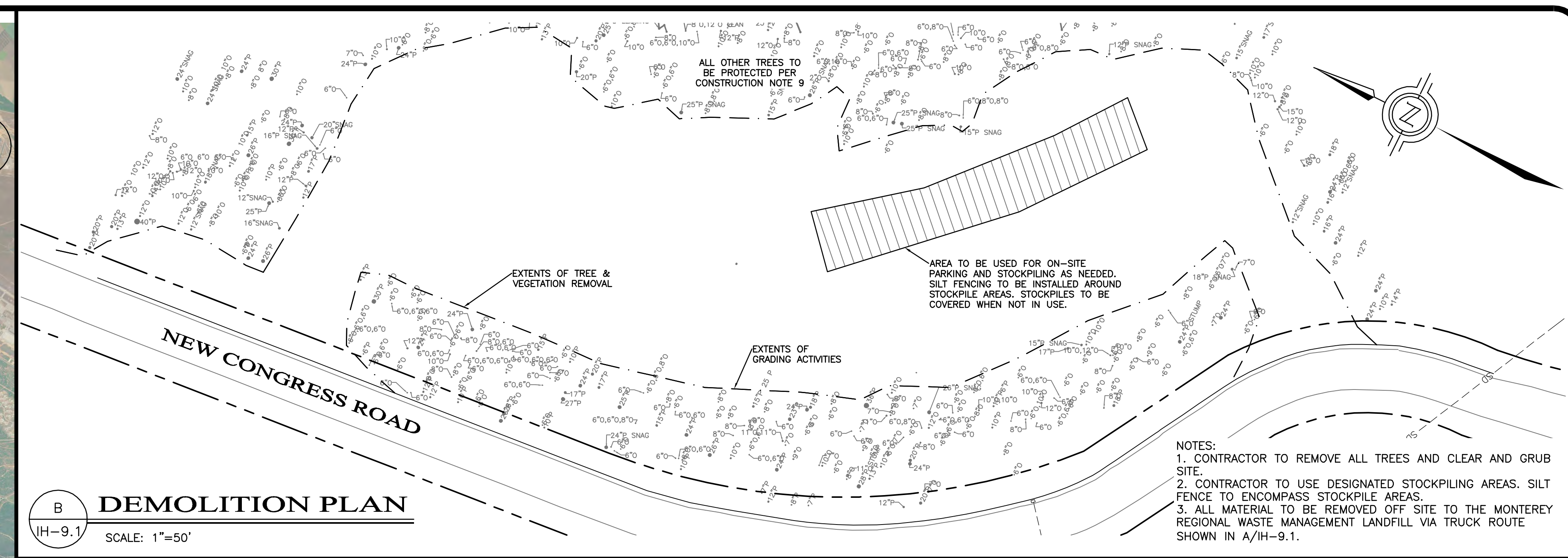


D STABILIZED CONSTRUCTION ENTRANCE
IH-8.1 NOT TO SCALE



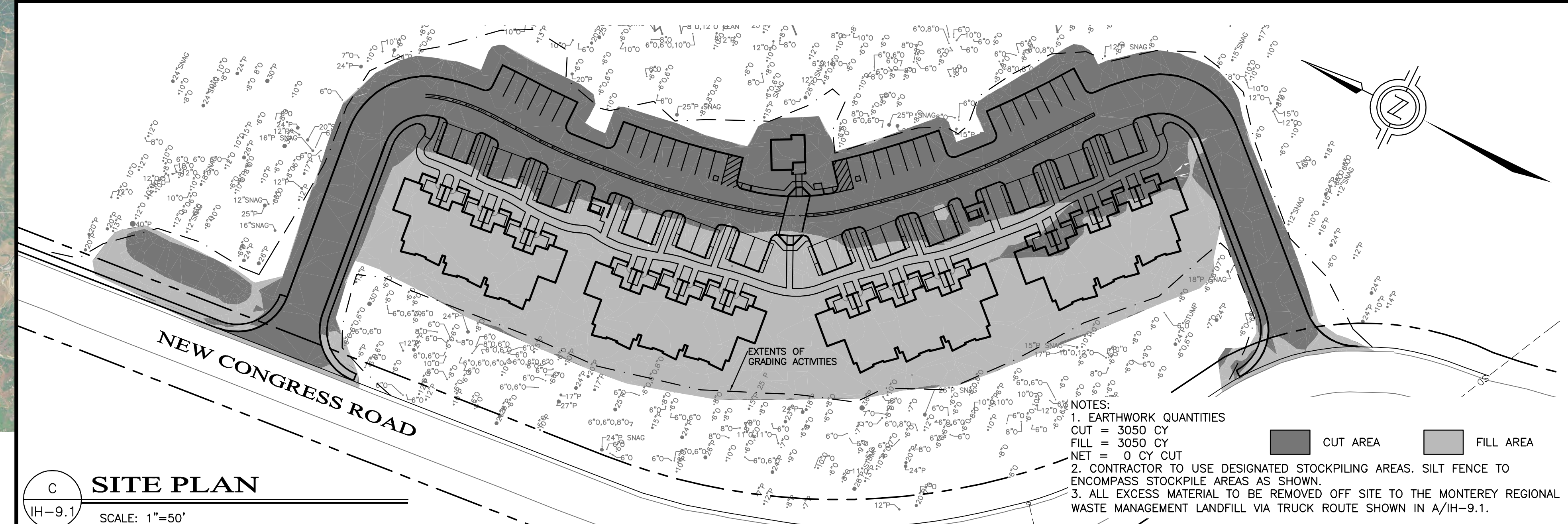
A OVERALL TRUCK ROUTING PLAN
 IH-9.1 SCALE: 1"=5000'

NOTE:
 1. TRUCK ROUTE SHOWN FOR ALL VEHICLES LEAVING THE PROJECT SITE. ALL VEHICLES GOING TO THE PROJECT SITE TO TAKE SAME ROUTE.



B DEMOLITION PLAN
 IH-9.1 SCALE: 1"=50'

NOTES:
 1. CONTRACTOR TO REMOVE ALL TREES AND CLEAR AND GRUB SITE.
 2. CONTRACTOR TO USE DESIGNATED STOCKPILE AREAS. SILT FENCE TO ENCOMPASS STOCKPILE AREAS.
 3. ALL MATERIAL TO BE REMOVED OFF SITE TO THE MONTEREY REGIONAL WASTE MANAGEMENT LANDFILL VIA TRUCK ROUTE SHOWN IN A/IH-9.1.



C SITE PLAN
 IH-9.1 SCALE: 1"=50'

NOTES:
 1. EARTHWORK QUANTITIES
 CUT = 3050 CY
 FILL = 3050 CY
 NET 0 CY CUT
 2. CONTRACTOR TO USE DESIGNATED STOCKPILE AREAS. SILT FENCE TO ENCOMPASS STOCKPILE AREAS AS SHOWN.
 3. ALL EXCESS MATERIAL TO BE REMOVED OFF SITE TO THE MONTEREY REGIONAL WASTE MANAGEMENT LANDFILL VIA TRUCK ROUTE SHOWN IN A/IH-9.1.

CONSTRUCTION NOTES

- ALL WORK SHALL TAKE PLACE DURING DAYLIGHT HOURS, MONDAY - SATURDAY, 8AM TO 6PM (EXCLUDING NATIONAL HOLIDAYS)
- THE SIGNED PERMITS AND THE APPROVED CONSTRUCTION PLANS SHALL BE MAINTAINED IN A CONSPICUOUS LOCATION AT THE CONSTRUCTION JOB SITE AT ALL TIMES, AND THAT SUCH COPIES ARE AVAILABLE FOR AGENCY REVIEW ON REQUEST. ALL PERSONS INVOLVED WITH THE CONSTRUCTION SHALL BE BRIEFED ON THE CONTENT AND MEANING OF THE PERMITS AND THE APPROVED CONSTRUCTION PLANS, AND THE PUBLIC REVIEW REQUIREMENTS APPLICABLE TO THEM, PRIOR TO COMMENCEMENT OF CONSTRUCTION.
- IF, DURING THE COURSE OF CONSTRUCTION, CULTURAL, ARCHAEOLOGICAL, HISTORICAL OR PALEONTOLOGICAL RESOURCES ARE UNCOVERED AT THE SITE (SURFACE OR SUBSURFACE RESOURCES) WORK SHALL BE HALTED IMMEDIATELY WITHIN 50 METERS (165 FEET) OF THE FIND UNTIL A QUALIFIED PROFESSIONAL ARCHAEOLOGIST CAN EVALUATE IT. THE MONTEREY COUNTY RMA PLANNING DEPARTMENT AND A QUALIFIED ARCHAEOLOGIST (I.E., AN ARCHAEOLOGIST REGISTERED WITH THE SOCIETY OF PROFESSIONAL ARCHAEOLOGISTS) SHALL BE IMMEDIATELY CONTACTED BY THE RESPONSIBLE INDIVIDUAL PRESENT ON-SITE. WHEN CONTACTED, THE PROJECT PLANNER AND THE ARCHAEOLOGIST SHALL IMMEDIATELY VISIT THE SITE TO DETERMINE THE EXTENT OF THE RESOURCES AND TO DEVELOP PROPER MITIGATION MEASURES REQUIRED FOR RECOVERY.
- EQUIPMENT WASHING, REFUELING AND SERVICING SHALL TAKE PLACE ONLY ON-SITE. APPROPRIATE BEST MANAGEMENT PRACTICES SHALL BE USED TO ENSURE THAT NO SPILLS OF PETROLEUM PRODUCTS OR OTHER CHEMICALS TAKE PLACE DURING THESE ACTIVITIES.
- THE CONSTRUCTION SITE SHALL MAINTAIN GOOD CONSTRUCTION SITE HOUSEKEEPING CONTROLS AND PROCEDURES (E.G. CLEANUP ALL LEAKS, DRIPS, AND OTHER SPILLS IMMEDIATELY; KEEP MATERIALS COVERED AND OUT OF THE RAIN, INCLUDING COVERING EXPOSED PILES OF SOIL AND WASTES; DISPOSE OF ALL WASTES PROPERLY; PLACE TRASH RECEPTACLES ON SITE FOR THAT PURPOSE, AND COVER OPEN TRASH RECEPTACLES DURING WET WEATHER).
- ALL EROSION AND SEDIMENT CONTROLS SHALL BE IN PLACE PRIOR TO THE COMMENCEMENT OF CONSTRUCTION AS WELL AS AT THE END OF EACH WORKDAY. AT A MINIMUM, SILT FENCES, OR EQUIVALENT APPARATUS, SHALL BE INSTALLED AT THE PERIMETER OF THE CONSTRUCTION SITE TO PREVENT CONSTRUCTION-RELATED RUNOFF AND/OR SEDIMENT FROM LEAVING THE SITE.
- THE CONTRACTOR SHALL IMPLEMENT THE FOLLOWING MEASURES TO CONTROL FUGITIVE DUST EMISSIONS DURING CONSTRUCTION (MM AQ C1 - DUST CONTROL):
 - WATER ALL ACTIVE CONSTRUCTION AREAS AT LEAST TWICE DAILY. FREQUENCY SHOULD BE BASED ON THE TYPE OF OPERATION, SOIL, AND WIND EXPOSURE.
 - PROHIBIT ALL GRADING ACTIVITIES DURING PERIODS OF HIGH WIND MORE THAN 15 MILES PER HOUR.
 - APPLY CHEMICAL SOIL STABILIZERS ON INACTIVE CONSTRUCTION AREAS SUCH AS DISTURBED LANDS WITHIN CONSTRUCTION PROJECTS THAT ARE UNUSED FOR AT LEAST FOUR CONSECUTIVE DAYS.
 - APPLY NON-TOXIC BINDERS LIKE LATEX ACRYLIC COPOLYMER TO EXPOSED AREAS AFTER CUT AND FILL OPERATIONS AND HYDROSEED AREA.
 - MAINTAIN AT LEAST 2 FEET OF FREEBOARD ON HAUL TRUCKS.
 - COVER ALL TRUCKS HAULING DIRT SAND OR LOOSE MATERIALS.
 - PLANT TREE WINDBREAKS ON THE WINDWARD PERIMETER OF CONSTRUCTION PROJECTS IF ADJACENT TO OPEN LAND, PRIOR TO CONSTRUCTION (N/A).
 - PLANT VEGETATIVE GROUND COVER IN DISTURBED AREAS AS SOON AS POSSIBLE.
 - COVER INACTIVE STORAGE PILES.
 - INSTALL WHEEL WASHERS AT THE ENTRANCE TO CONSTRUCTION SITES FOR ALL EXITING TRUCKS.
 - PAVE ALL ROADS ON CONSTRUCTION SITES PRIOR TO USE BY CONSTRUCTION EQUIPMENT (N/A).
 - SWEEP STREETS IF VISIBLE SOIL MATERIAL IS CARRIED OUT FROM THE CONSTRUCTION SITE AND CHECK AT LEAST ONCE DAILY.
 - POST A PUBLICLY VISIBLE SIGN THAT SPECIFIES THE TELEPHONE NUMBER AND PERSON TO CONTACT REGARDING DUST COMPLAINTS. THIS PERSON WILL RESPOND TO COMPLAINTS AND TAKE CORRECTIVE ACTION WITHIN 48 HOURS. THE PHONE NUMBER OF THE MBUAPCD WILL BE VISIBLE TO ENSURE COMPLIANCE WITH RULE 402 NUISANCE.
 - LIMIT THE AREA UNDER CONSTRUCTION AT ANY ONE TIME.
- THE CONTRACTOR SHALL IMPLEMENT THE FOLLOWING MEASURES TO CONTROL CONSTRUCTION RELATED EXHAUST EMISSIONS FROM HEAVY DUTY OFF ROAD DIESEL POWERED CONSTRUCTION EQUIPMENT DURING CONSTRUCTION (MM AQ C2 - EMISSION CONTROL):
 - LIMIT USE OF EQUIPMENT.
 - REPLACE DIESEL POWERED EQUIPMENT WITH GASOLINE POWERED EQUIPMENT.
 - MODIFY ENGINE WITH ARB VERIFIED RETROFIT.
 - REPOWER WITH CURRENT STANDARD DIESEL TECHNOLOGY.
 - REPOWER WITH COMPRESSED NATURAL GAS AND/OR LIQUID NATURAL GAS TECHNOLOGY.
 - THE APPLICANT WILL ENSURE THAT THE CONSTRUCTION SPECIFICATIONS REQUIRE CONSTRUCTION CONTRACTORS TO RETROFIT AND INSTALL DIESEL PARTICULATE FILTERS CAPABLE OF ACHIEVING AN 85 PERCENT REDUCTION IN PM10 EXHAUST EMISSIONS LEVEL 3 ON ALL OFF ROAD CONSTRUCTION EQUIPMENT AND DIESEL OXIDATION CATALYSTS AND LEVEL 3 DIPS ON ALL ON ROAD SOIL HAULING.
 - THE CONTRACTOR SHALL IMPLEMENT THE FOLLOWING 8 TREE PROTECTION MEASURES DURING CONSTRUCTION:
 - AROUND EACH TREE OR GROUP OF TREES TO BE PRESERVED ADJACENT TO CONSTRUCTION SITES, A BOUNDARY OF ORANGE FENCING SUPPORTED BY WOOD OR METAL STAKES OR FUNCTIONAL EQUIVALENT WILL BE ERECTED ALONG THE APPROXIMATE DRIP LINES OF SUCH PROTECTED TREES OR CLOSER WHERE SPECIFICALLY APPROVED BY A QUALIFIED FORESTER, ARBORIST, OR THE COUNTY OF MONTEREY. WHERE GUIDANCE OF A TREE PROFESSIONAL IS USED, ENCROACHMENT INTO THE DRIP LINE OF RETAINED TREES MAY OCCUR IN ORDER TO MINIMIZE TREE REMOVALS.

- NO EXCAVATION, STORAGE OF EXCAVATED FILL, EQUIPMENT, OR CONSTRUCTION MATERIALS, NOR PARKING OF VEHICLES WILL BE PERMITTED WITHIN THE DRIP LINES OF THESE FENCE PROTECTED TREES.
- NO SOIL MAY BE REMOVED FROM WITHIN THE DRIP LINE OF ANY TREE AND NO FILL OF ADDITIONAL SOIL WILL EXCEED TWO INCHES WITHIN THE DRIP LINES OF TREES, UNLESS IT IS PART OF APPROVED CONSTRUCTION, IS REVIEWED BY A QUALIFIED FORESTER OR CERTIFIED ARBORIST, AND IS APPROVED BY ARCHITECTURAL REVIEW STAFF.
- BARK INJURY TO ANY TREE FROM EQUIPMENT OR MATERIALS WILL BE PREVENTED BY FAITHFULLY RESPECTING THE TREE PROTECTION FENCING REQUIRED ABOVE.
- ROOTS EXPOSED BY EXCAVATION WILL BE PRUNED TO PROMOTE CALLUSING, CLOSURE, AND REGROWTH, AND WILL BE RECOVERED AS SOON AS POSSIBLE IF TREE HEALTH IS TO BE REASONABLY MAINTAINED.
- ALL TREE WORK WILL BE MONITORED BY A QUALIFIED FORESTER OR CERTIFIED ARBORIST AND COMPLETED BY QUALIFIED TREE SERVICE PERSONNEL.
- N/A
- DISEASED TREES ESPECIALLY PITCH CANKER INFECTED TREES FROM WHICH DISEASE MIGHT SPREAD TO NEARBY FORESTED AREAS AS VERIFIED IN WRITING BY A QUALIFIED PROFESSIONAL FORESTER SELECTED FROM THE COUNTY'S LIST OF CONSULTING FORESTERS WILL BE REMOVED.
- THE CONTRACTOR SHALL INCLUDE THE FOLLOWING THREE BEST MANAGEMENT PRACTICES DURING CONSTRUCTION, TO THE EXTENT FEASIBLE, TO REDUCE CONSTRUCTION RELATED GHG EMISSIONS:
 - USE ALTERNATIVE FUELED LIKE BIODIESEL AND ELECTRIC CONSTRUCTION VEHICLES AND EQUIPMENT FOR AT LEAST 15 PERCENT OF THE FLEET.
 - USE LOCAL BUILDING MATERIALS WHERE REASONABLY AVAILABLE WITHIN THE GENERAL MONTEREY BAY AREA DEFINED AS MONTEREY COUNTY, SANTA CRUZ COUNTY, AND SAN BENITO COUNTY.
 - RECYCLE AT LEAST 50 PERCENT OF CONSTRUCTION WASTE OR DEMOLITION MATERIALS.
- PRIOR TO ISSUANCE OF GRADING OR BUILDING PERMITS OF ANY PHASE OF THIS PROJECT, THE PROJECT APPLICANT WILL SUBMIT TO MONTEREY COUNTY FOR REVIEW AND APPROVAL A REPORT OF CONSTRUCTION SPECIFICATIONS DEMONSTRATING IMPLEMENTATION OF Bmps.
- PRIOR TO THE INITIATION OF ANY SITE PREPARATION AND OR START OF CONSTRUCTION, ALL CONSTRUCTION FOREPERSONS AND FIELD SUPERVISORS, WHO WILL BE INVOLVED IN GRADING AND OTHER GROUND-DISTURBING ACTIVITIES, WILL RECEIVE TRAINING OVERSEEN BY ARCHAEOLOGICAL CONSULTING, GARY BRESCHINI, A QUALIFIED PROFESSIONAL ARCHAEOLOGIST AND PALEONTOLOGIST AS DEFINED BY SOCIETY OF VERTEBRATE PALEONTOLOGY'S CONFORMABLE IMPACT MITIGATION GUIDELINES COMMITTEE AND WHO IS EXPERIENCED IN TEACHING NON-SPECIALISTS, TO ENSURE THAT FOREPERSONS AND FIELD SUPERVISORS CAN RECOGNIZE ARCHAEOLOGICAL AND PALEONTOLOGICAL RESOURCES SUCH AS AREAS OF SHELLFISH REMAINS, CHIPPED STONE OR GROUNDSTONE, HISTORIC DEBRIS, BUILDING FOUNDATIONS, AND BONE. THE PLANNING DEPARTMENT AND A QUALIFIED ARCHAEOLOGIST REGISTERED WITH THE SOCIETY OF PROFESSIONAL ARCHAEOLOGISTS SHALL BE IMMEDIATELY CONTACTED BY THE RESPONSIBLE INDIVIDUAL PRESENT ON-SITE AND WILL IMMEDIATELY VISIT THE SITE TO DETERMINE THE EXTENT OF THE RESOURCES AND TO DEVELOP PROPER MITIGATION MEASURES REQUIRED FOR THE DISCOVERY. IF BURIED RESOURCES IN THE FORM OF BONES OR HUMAN REMAINS ARE ACCIDENTALLY DISCOVERED, THERE WILL BE NO FURTHER EXCAVATION OR DISTURBANCE OF THE SITE OR ANY NEARBY AREA REASONABLY SUSPECTED TO OVERLIE ADJACENT HUMAN REMAINS UNTIL THE COUNTY CORONER IS CONTACTED TO DETERMINE THE CAUSE OF DEATH IS REQUIRED. IF THE CORONER DETERMINES THE REMAINS TO BE NATIVE AMERICAN, THE CORONER WILL CONTACT THE NATIVE AMERICAN HERITAGE COMMISSION NAHC AND THE PLANNING DEPARTMENT WITHIN 24 HOURS. THE NAHC WILL IDENTIFY THE PERSON OR PERSONS FROM A RECOGNIZED LOCAL TRIBE TO BE THE MOST LIKELY DESCENDENT WHO MAY MAKE RECOMMENDATIONS TO THE LANDOWNER OR THE PERSON RESPONSIBLE FOR THE EXCAVATION WORK, FOR MEANS OF TREATING OR DISPOSING OF THE HUMAN REMAINS AND ANY ASSOCIATED GRAVE GOODS.
- IF ANY INDICATION OF A PALEONTOLOGICAL RESOURCE SUCH AS VERTEBRATE FOSSIL MATERIALS IS DISCOVERED DURING ANY PROJECT ACTIVITY, ALL GROUND DISTURBING WORK WITHIN 50 FEET OF THE FIND WILL STOP IMMEDIATELY UNTIL A QUALIFIED PALEONTOLOGIST CAN ASSESS THE NATURE AND IMPORTANCE OF THE FIND IN A TIMELY MANNER AND RECOMMEND APPROPRIATE TREATMENT. RECOMMENDATIONS COULD INCLUDE MODIFICATIONS TO THE STOP-WORK RADIUS BASED ON THE NATURE OF THE FIND, SITE GEOLOGY, AND THE ACTIVITIES OCCURRING ON THE SITE, AND COULD INCLUDE CONTINUED MONITORING, PALEONTOLOGICAL MONITORING, IF REQUIRED, WILL CONSIST OF PERIODICALLY INSPECTING DISTURBED, GRADED, AND EXCAVATED SURFACES. THE MONITOR WILL HAVE AUTHORITY TO DIVERT GRADING OR EXCAVATION AWAY FROM EXPOSED SURFACES TEMPORARILY IN ORDER TO EXAMINE DISTURBED AREAS MORE CLOSELY, AND OR RECOVER FOSSILS. THE MONITOR WILL COORDINATE WITH THE CONSTRUCTION MANAGER TO ENSURE THAT MONITORING IS THOROUGH BUT DOES NOT RESULT IN UNNECESSARY DELAYS. PALEONTOLOGIST RECOMMENDATIONS FOR ANY REQUIRED TREATMENT WILL BE CONSISTENT WITH SOCIETY OF VERTEBRATE PALEONTOLOGY GUIDELINES AND CURRENTLY ACCEPTED SCIENTIFIC PRACTICE. IF REQUIRED, TREATMENT FOR FOSSIL REMAINS MAY INCLUDE PREPARATION AND RECOVERY OF FOSSIL MATERIALS SO THAT THEY CAN BE HOUSED IN AN APPROPRIATE MUSEUM OR UNIVERSITY COLLECTION, AND MAY ALSO INCLUDE PREPARATION OF A REPORT FOR PUBLICATION DESCRIBING THE FINDS. THE CONTRACTOR WILL BE RESPONSIBLE FOR ENSURING THAT TREATMENT IS IMPLEMENTED AND THAT INFORMATION ON THE NATURE, LOCATION, AND DEPTH OF ALL FINDS IS READILY AVAILABLE TO THE SCIENTIFIC COMMUNITY THROUGH UNIVERSITY CURATION OR OTHER APPROPRIATE MEANS.

- THE CONTRACTOR WILL ENSURE THAT ALL STATIONARY NOISE GENERATING EQUIPMENT, SUCH AS PUMPS AND GENERATORS ARE LOCATED AS FAR AS POSSIBLE FROM NEARBY NOISE SENSITIVE RECEPTORS AS PRACTICABLE. WHERE POSSIBLE, NOISE GENERATING EQUIPMENT WILL BE SHIELDED FROM NEARBY NOISE SENSITIVE RECEPTORS BY NOISE ATTENUATING BUFFERS SUCH AS STRUCTURES OR HAUL TRUCK TRAILERS. STATIONARY NOISE SOURCES LOCATED CLOSER THAN 500 FEET FROM NOISE SENSITIVE RECEPTORS WILL BE EQUIPPED WITH NOISE REDUCING ENGINE HOUSINGS, PORTABLE ACOUSTIC BARRIERS WILL BE PLACED AROUND NOISE GENERATING EQUIPMENT LOCATED WITHIN 200 FEET OF RESIDENCES. WATER TANKS AND EQUIPMENT STORAGE, STAGING, AND WARM-UP AREAS WILL BE LOCATED AS FAR FROM NOISE SENSITIVE RECEPTORS AS POSSIBLE.
- THE CONTRACTOR WILL ENSURE ALL CONSTRUCTION EQUIPMENT POWERED BY GASOLINE OR DIESEL ENGINES HAS SOUND CONTROL DEVICES AT LEAST AS EFFECTIVE AS THOSE ORIGINALLY PROVIDED BY THE MANUFACTURER. NO EQUIPMENT WILL BE PERMITTED TO HAVE AN UNMUFFLED EXHAUST.
- THE APPLICANT WILL ENSURE THE CONSTRUCTION SPECIFICATIONS SPECIFY THAT ANY IMPACT TOOLS USED DURING DEMOLITION OF EXISTING INFRASTRUCTURE ARE SHROUDED OR SHIELDED. THESE REQUIREMENTS WILL BE INCLUDED IN ALL RELEVANT CONSTRUCTION CONTRACTS AND SHOWN ON CONSTRUCTION PLANS.
- THE APPLICANT WILL ENSURE THE CONSTRUCTION SPECIFICATIONS SPECIFY THAT ANY MOBILE NOISE-GENERATING EQUIPMENT OR MACHINERY IS SHUT OFF WHEN NOT IN USE. THESE REQUIREMENTS WILL BE INCLUDED IN ALL RELEVANT CONSTRUCTION CONTRACTS AND SHOWN ON CONSTRUCTION PLANS, AND WILL BE IMPLEMENTED DURING CONSTRUCTION.
- THE CONTRACTOR TO ENSURE THAT CONSTRUCTION VEHICLES ACCESSING THE SITE USE THE SHORTEST POSSIBLE ROUTE TO AND FROM LOCAL FREEWAYS, PROVIDED THE ROUTES DO NOT EXPOSE ADDITIONAL RECEPTORS TO NOISE. SEE APPROVED CONSTRUCTION MANAGEMENT PLAN.
- THE APPLICANT AND THE CONTRACTOR WILL ENSURE THAT RESIDENTS WITHIN 500 FEET OF THE CONSTRUCTION AREA ARE NOTIFIED OF THE CONSTRUCTION SCHEDULE IN WRITING BEFORE CONSTRUCTION BEGINS. THE PROJECT APPLICANT AND CONTRACTOR WILL DESIGNATE A NOISE DISTURBANCE COORDINATOR WHO IS RESPONSIBLE FOR RESPONDING TO COMPLAINTS REGARDING CONSTRUCTION NOISE. THE COORDINATOR WILL DETERMINE THE CAUSE OF ANY COMPLAINT AND ENSURE THAT REASONABLE MEASURES ARE IMPLEMENTED TO CORRECT THE PROBLEM. A CONTACT TELEPHONE NUMBER FOR THE NOISE DISTURBANCE COORDINATOR WILL BE POSTED CONSPICUOUSLY ON CONSTRUCTION SITE. FENCES AND WILL BE INCLUDED IN THE WRITTEN NOTIFICATION OF THE CONSTRUCTION SCHEDULE SENT TO NEARBY RESIDENTS.
- THROUGHOUT THE CONSTRUCTION PERIOD, THE CONTRACTOR WILL IMPLEMENT ADDITIONAL NOISE MITIGATION MEASURES AT THE REQUEST OF THE COUNTY AS NEEDED SUCH THAT CONSTRUCTION NOISE LEVELS DO NOT EXCEED 65 DBA AT THE NEAREST OUTDOOR ACTIVITY AREA OF A NOISE-SENSITIVE LAND USE. ADDITIONAL MEASURES MIGHT INCLUDE CHANGING THE LOCATION OF STATIONARY NOISE GENERATING EQUIPMENT, SHUTTING OFF IDLING EQUIPMENT, RESCHEDULING CONSTRUCTION ACTIVITY, INSTALLING ACOUSTIC BARRIERS AROUND STATIONARY SOURCES OF CONSTRUCTION NOISE, TEMPORARILY RELOCATING RESIDENTS WHERE PRACTICABLE, USING ALTERNATIVE EQUIPMENT OR CONSTRUCTION METHODS THAT PRODUCE LESS NOISE, AND OTHER SITE-SPECIFIC MEASURES AS APPROPRIATE.
- A TRAFFIC CONTROL PLAN, INCLUDING A COMPREHENSIVE SET OF TRAFFIC CONTROL MEASURES, WILL BE PREPARED BY THE CONSTRUCTION CONTRACTOR, SUBMITTED TO MONTEREY COUNTY FOR REVIEW AND APPROVAL, BEFORE ISSUANCE OF GRADING OR BUILDING PERMITS. THE PLAN WILL INCLUDE PROCEDURES FOR SCHEDULING MAJOR TRUCK TRIPS AND DELIVERIES TO AVOID SPECIAL EVENT ACTIVITY IN DEL MONTE FOREST AND MINIMIZE PEAK HOUR ACTIVITY ON ROADS OPERATING BELOW LOS SIGNIFICANCE THRESHOLDS. LANE CLOSURE PROCEDURES, INCLUDING SIGNS, CONES, AND OTHER WARNING DEVICES FOR DRIVERS, WILL BE IDENTIFIED AS APPROPRIATE. USE OF STEEL PLATES TO MAINTAIN THROUGH TRAFFIC ON ROADS WILL BE CONSIDERED, AND CONSTRUCTION ACCESS ROUTES WILL BE IDENTIFIED. CONSTRUCTION STAGING WILL NOT OCCUR ON-SITE AND AREAS DESIGNATED FOR STAGING PURPOSES WILL BE DESIGNATED BY PBC REPRESENTATIVE AND VERIFIED BY THE COUNTY. ON-SITE PARKING WILL NOT BE PROVIDED FOR ALL CONSTRUCTION WORKERS. ALTERNATIVE PARKING AND SHUTTLE SYSTEMS WILL BE DETERMINED BY PBC REPRESENTATIVE AND VERIFIED BY THE COUNTY.
- PBC WILL PROVIDE A PLAN WHICH MUST BE APPROVED BY THE COUNTY THAT ENSURES THAT WHEREVER POSSIBLE CONSTRUCTION TRUCK TRAVEL WILL OCCUR ON COLLECTOR AND ARTERIAL ROADS, NOT ON LOCAL OR RESIDENT STREETS. TRAFFIC CONTROL WILL BE USED DURING MAJOR OFF HAULING ACTIVITIES. ANY DAMAGE ATTRIBUTABLE TO HAUL TRUCKS ON HAUL ROUTES WILL BE REPAIRED TO THE SATISFACTION OF THE APPROPRIATE AGENCY BY PBC. APPROVED TRUCK TRAFFIC ROUTES WILL BE INCLUDED IN THE TRAFFIC CONTROL PLAN REQUIRED BY MM TRA A2 AND BE REVIEWED AND APPROVED BY MONTEREY COUNTY PRIOR TO ISSUANCE OF GRADING OR BUILDING PERMITS.
- CONDITION #108, MM NOI BE, THE CONTRACTOR TO ENSURE THAT CONSTRUCTION VEHICLES ACCESSING THE SITE USE THE SHORTEST POSSIBLE ROUTE TO AND FROM LOCAL FREEWAYS, PROVIDED THE ROUTES DO NOT EXPOSE ADDITIONAL RECEPTORS TO NOISE. SEE APPROVED TRUCK ROUTE A/IH-9.1.

ADDITIONAL NOTES:
 1. IT IS ASSUMED THAT THIS PROJECT SITE WILL EXPECT 10-20 WORKERS PER DAY.
 2. IT IS ASSUMED THAT THIS PROJECT SITE WILL EXPECT, ON AVERAGE, 1 TRUCK DELIVERY PER DAY. DELIVERY TRUCKS WILL ENTER AND LEAVE PEBBLE BEACH VIA THE SAMUEL F.B. MORSE GATE LOCATED OFF OF HIGHWAY 68 AS SHOWN IN A/IH-9.1, THE APPROVED TRUCK ROUTE FROM AND TO THE SITE.

© 2013 PEBBLE BEACH COMPANY, ALL RIGHTS RESERVED

Fletcher + Hardoin Architects
 769 Pacific Street
 Monterey, CA 93940
 831-373-5855
 www.fletcherhardoin.com

ENGINEERING AND SURVEYING, INC.
 2480 Garden Road, Suite G, Monterey, California 93940
 P: 831.655.2723 F: 831.655.3425
 LandEngineers.com

PEBBLE BEACH COMPANY
 P.O. BOX 1767 PEBBLE BEACH, CALIFORNIA 93953
 (831) 624-8900

PARCEL INFORMATION: 008-041-009
 PARCEL 6, VOLUME 15, CITIES AND TOWNS, PAGE 52

AREA D
 DEL MONTE FOREST PRESERVATION AND DEVELOPMENT PLAN
AREA D INCLUSIONARY HOUSING
 CONSTRUCTION MANAGEMENT PLAN

IH-9.1
 DATE: JULY 2013

WHEN CREATING DEFENSIBLE SPACE, KEEP THESE SAFETY TIPS IN MIND:

- All equipment with an internal combustion engine must be equipped with an approved and operable spark arrestor.
- Metal blades striking rocks can create sparks and start fires. Use caution.
- To protect water quality and habitat, do not remove vegetation associated with water, avoid using heavy equipment near waterways and do not clear vegetation near waterways to the bare mineral soil. Keep soil disturbance to a minimum.

OTHER HINTS TO SECURE A LEAN, CLEAN AND GREEN ZONE:

- Select less flammable plants for your Lean, Clean and Green Zone.
 - Shorter plants (less than 2 feet) are safer than taller ones.
 - If kept green, herbaceous plants (grass and non-woody flowers) are better choices than shrubs and trees.
 - If planting shrubs and trees, choose deciduous (trees that shed their leaves) ones over evergreens. Avoid planting juniper, pine and palms.
- Remove tree limbs that are touching the house or deck, or are within 10 feet of the chimney. If limbs are encroaching on overhead lines, contact your telephone or power company for removal.
- List hard surfaces (concrete, stone, asphalt, brick, etc.) in your landscaping.
- Clear ALL flammable vegetation from within 10 feet of propane tanks.

YOUR RESPONSIBILITY:

California law (PRC 4291) requires property owners and/or occupants to create 100 feet of DEFENSIBLE SPACE around homes and buildings.

YOUR GOAL — TO CREATE A:

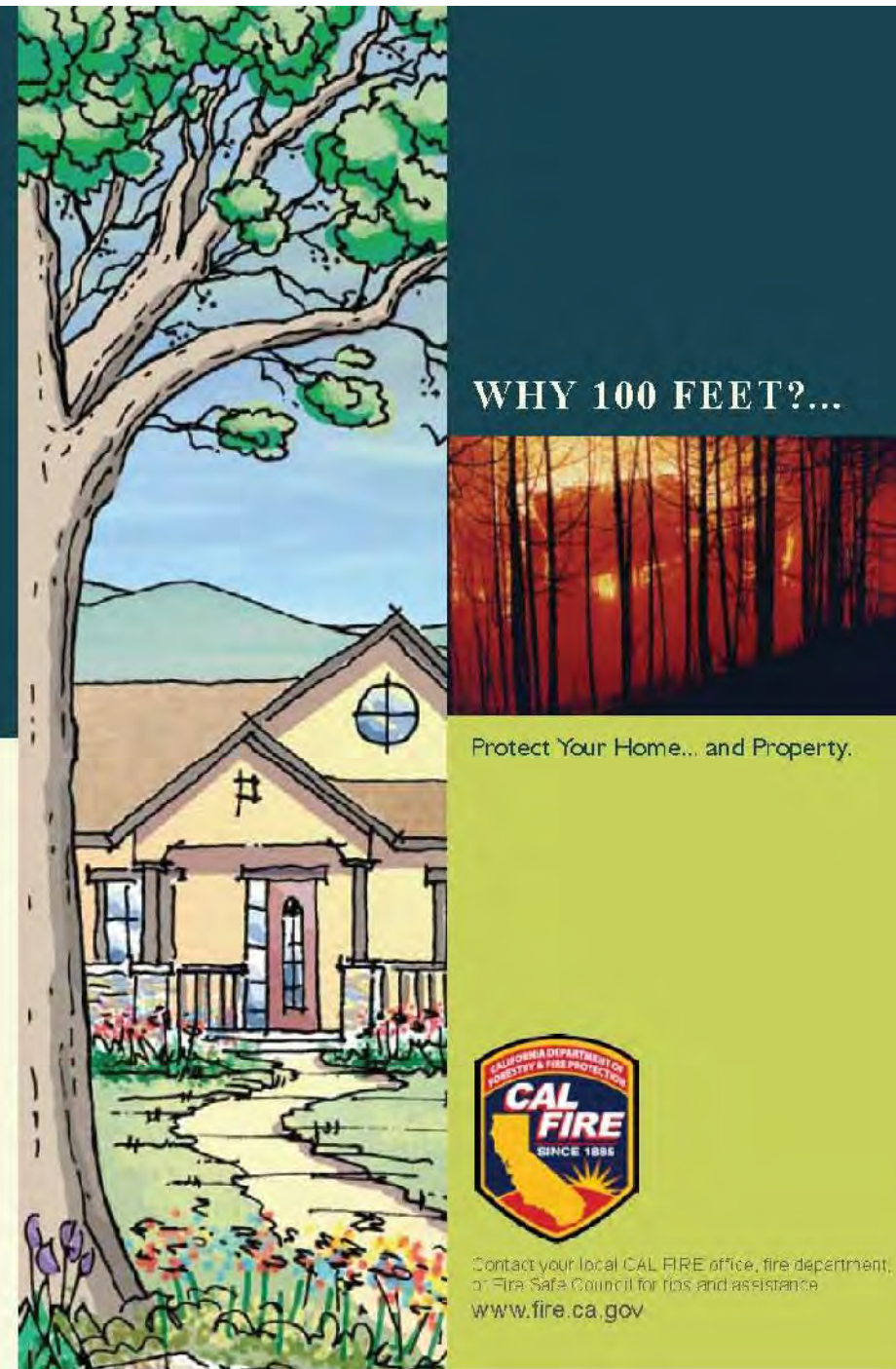
- Lean, Clean and Green Zone**
An area of 30 feet immediately surrounding your home.
- Reduced Fuel Zone**
The fuel reduction zone in the remaining 70 feet (or to the property line).



*Compliance to PRC 4291 is required by any person who owns, leases, controls, operates or maintains a building or structure and is required by any contractor, subcontractor, contractor, operator or maintainer of any building or structure and is required by any contractor, subcontractor, contractor, operator or maintainer of any building or structure. This regulation is intended to protect the public health, safety and general welfare of the State. This regulation is intended to protect the public health, safety and general welfare of the State. This regulation is intended to protect the public health, safety and general welfare of the State.

WHY 100 FEET?...

...Because Defensible Space is **YOUR** responsibility



WHY 100 FEET?...



Protect Your Home... and Property.



Contact your local CAL FIRE office, fire department or Fire Safe Council for tips and assistance. www.fire.ca.gov

OUTSIDE

1 Design/Construction

- Use ignition resistant construction (effective January 1, 2008) for roof/roof assemblies, gutters, vents, decks, exterior walls, exterior windows.
- Enclose the underside of eaves, balconies and above ground decks with fire resistant materials.
- Show your 100 feet Defensible Space on plot plan.
- Build your home away from ridge tops, canyons and areas between high points of a ridge.
- Consider installing residential sprinklers.
- Make sure that electric service lines, fuse boxes and circuit breaker panels are installed and maintained per code.
- Contact qualified individuals to perform electrical maintenance and repairs.

2 Access

- Make sure that your street name sign is visibly posted at each street intersection.
- Post your house address so it is easily visible from the street, especially at night.
- Address numbers should be at least 3 inches tall and on a contrasting background.
- Identify at least two exit routes from your neighborhood.
- Clear flammable vegetation at least 10 feet from roads and five feet from driveways.
- Cut back overhanging tree branches above access roads.
- Construct roads that allow two-way traffic.
- Make sure dead-end roads, and long drive ways have turn-around areas wide enough for emergency vehicles.
- Design bridges to carry heavy emergency vehicles.
- Post clear road signs to show traffic restrictions such as dead-end roads, and weight and height limitations.

3 Roof

- Install a fire resistant roof. Contact your local fire department for current roofing requirements.
- Remove dead leaves and needles from your roof and gutters.
- Remove dead branches overhanging your roof and keep branches 10 feet from your chimney.
- Cover your chimney outlet and stovepipe with a nonflammable screen of 1/2 inch or smaller mesh.

4 Landscape

- Create a Defensible Space of 100 feet around your home. It is required by law.
- Create a "LEAN, CLEAN and GREEN ZONE" by removing all flammable vegetation within 30 feet immediately surrounding your home. You have two options in this area:
 - A. Create horizontal and vertical spacing between plants.** The amount of space will depend on how steep your property is and the size of your plants.
 - B. Large trees do not have to be removed as long as all of the plants beneath them are removed.**
- Remove lower tree branches at least six feet from the ground.
- Landscape with fire resistant plants.
- Maintain all plants with regular water, and keep dead branches, leaves and needles removed.
- When clearing vegetation, use care when operating equipment such as lawnmowers. One small spark may start a fire; a string trimmer is much safer.

5 Yard

- Stack woodpiles at least 30 feet from all structures and remove vegetation within 10 feet of woodpiles.
- Above ground Liquefied Petroleum Gas (LPG-gas) containers (50 or less water gallons) shall be located a minimum of 10 feet with respect to buildings, public ways, and lot lines of adjoining property that can be built upon (CFC 3804.3).
- Remove all stacks of construction materials, pine needles, leaves and other debris from your yard.
- Contact your local fire department to see if debris burning is allowed in your area. If so, obtain a burning permit and follow all local air quality restrictions.

6 Emergency Water Supply

- Maintain an emergency water supply that meets fire department standards through one of the following:
 - a community waterhydrant system
 - a cooperative emergency storage tank with neighbors
 - a minimum storage supply of 2,500 gallons on your property (like a pond or pool)
- Clearly mark all emergency water sources.
- Create easy firefighter access to your closest emergency water source.
- If your water comes from a well, consider an emergency generator to operate the pump during a power failure.

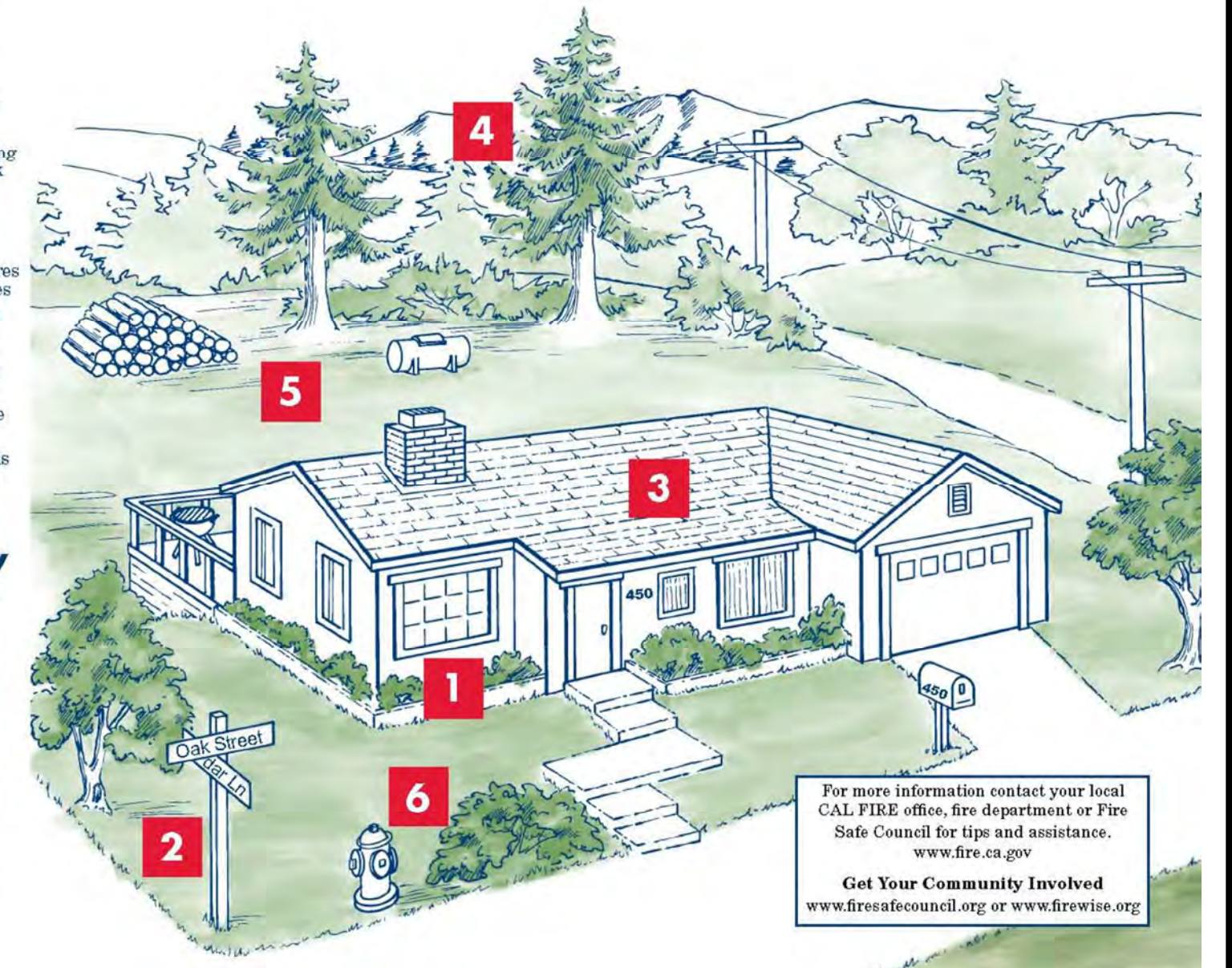
California Department of Forestry and Fire Protection

Homeowners Checklist



www.fire.ca.gov

How To Make Your Home Fire Safe



For more information contact your local CAL FIRE office, fire department or Fire Safe Council for tips and assistance. www.fire.ca.gov
Get Your Community Involved www.fireassess.org or www.firewise.org

TWO ZONES MAKE UP THE REQUIRED 100 FEET OF DEFENSIBLE SPACE:

- Lean, Clean and Green Zone**
An area of 30 feet immediately surrounding your home.
- Reduced Fuel Zone**
The fuel reduction zone in the remaining 70 feet (or to the property line).



COMPLY WITH THE LAW AND HELP SAVE YOUR HOME BY CREATING DEFENSIBLE SPACE.

- Follow these guidelines:
- Create a Lean, Clean and Green Zone**
Remove all flammable vegetation and any dead or dying plants within 30 feet of each building or structure.
You may keep single trees or other vegetation that are trimmed of all dead and dying foliage and are well pruned and maintained.
 - Decrease Fuel in the Reduced Fuel Zone**
Surface litter consists of fallen leaves, needles, twigs, bark, cones, pods, small branches, etc. Remove loose surface litter so it does not exceed a depth of three inches.
Make it Safe: Logs, Stumps and Snags
All logs and stumps should be removed unless they are embedded in the soil. If you keep an embedded log, remove nearby vegetation.
A standing dead tree (snag) may be kept for wildlife providing there is only one snag per acre, and if the snag were to fall, it would not reach buildings or structures and would not land on roadways or driveways.
Provide Fuel Separation and Treatment
Guidelines for fuel treatment as published by CDF are designed to reduce the spread of wildfires.
Choose option 2a or 2b. The best option for your property will be based on its characteristics (slope, vegetation size, vegetation type-brush, grass, trees, etc.) and other fuel characteristics. Properties with greater fire hazards will require larger separation between fuels. For example, a property on a steep slope with larger vegetation will require greater spacing between trees and shrubs than a level property that has small, sparse vegetation.

2a: Grasses

Ideally, grass should not exceed four inches in height. In situations where these fuels are isolated from other fuels or where necessary to stabilize soil, grasses and forbs may reach a height of 18 inches.

2a: Horizontal Clearance for Shrubs and Trees

Uncleared ground fuels provide an open freeway for the rapid spread and increased intensity of fire.
Clearance between shrubs should be 4 to 40 feet depending on the slope of the land and size and type of vegetation. Check the chart below for an estimation of clearance distance. Any questions regarding requirements for a specific property should be addressed to your local fire official.

Minimum Horizontal Clearance	
SHRUBS	TREES
From edge of one shrub to the edge of the next	From edge of one tree canopy to the edge of the next
Flat to mild slope (0% to 20% slope) Five times (5x) the height of the shrub (Two shrubs 2' high should be spaced 4' apart)	Flat to mild slope (0% to 20% slope) 10 feet
Mild to moderate slope (20% to 40% slope) Four times (4x) the height of the shrub (Two shrubs 2' high should be spaced 8' apart)	Mild to moderate slope (20% to 40% slope) 20 feet
Moderate to steep slope (greater than 40% slope) Six times (6x) the height of the shrub (Two shrubs 2' high should be spaced 12' apart)	Moderate to steep slope (greater than 40% slope) 30 feet

2a: Vertical Clearance for Shrubs and Trees

Low branches create "ladders" from the ground fuels to the trees.
To determine the proper vertical clearance between shrubs and the lowest branches of trees, use the formula below.



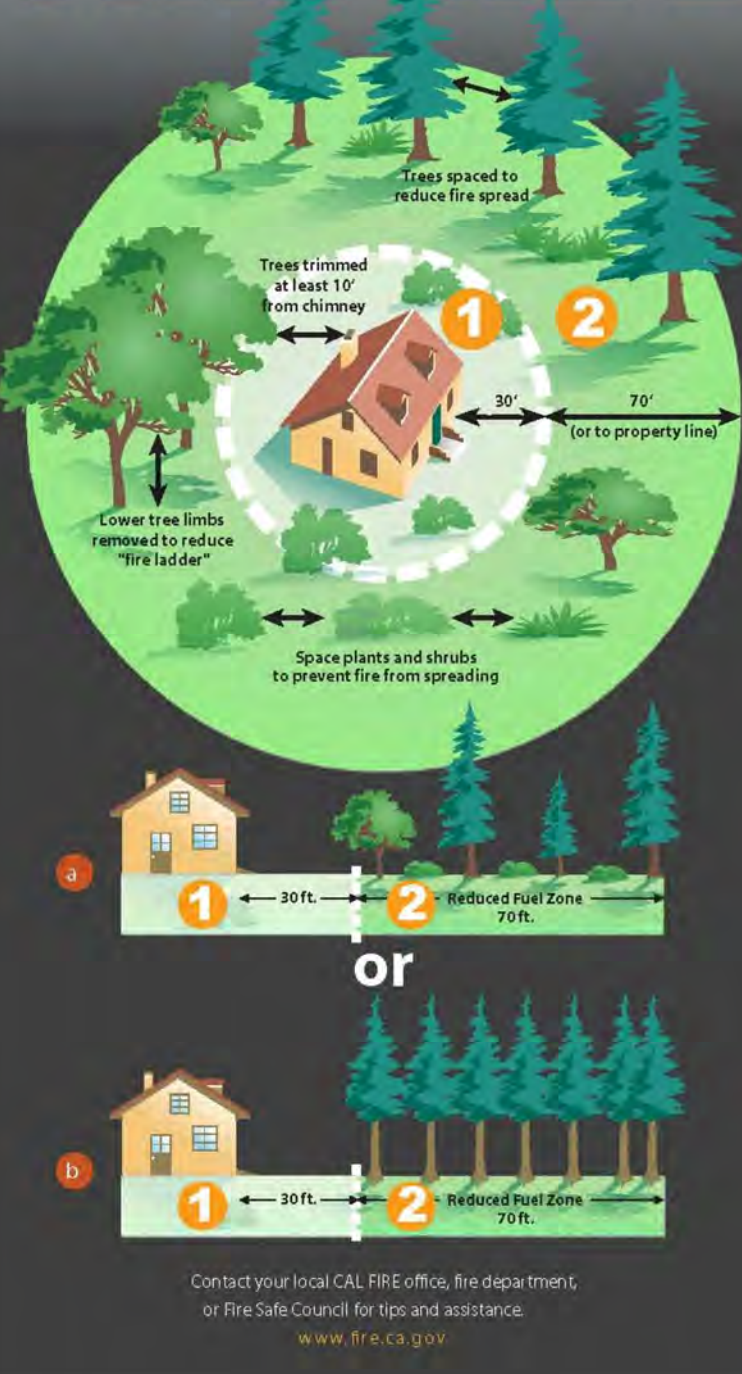
Note: A grouping of vegetation may be treated as a single plant if the foliage of the grouping does not exceed 10 feet in width. For example, three individual manzanita plants growing in a cluster with a total foliage width of 9 feet can be "rounded" and considered a one plant.

2b: Defensible Space with Continuous Tree Canopy

- To achieve Defensible Space while keeping a larger stand of trees with a continuous tree canopy, adhere to the guidelines below:
 - Prune lower branches of trees to a height of six to 15 feet from the top of the vegetation below (or the lower 1/3 of branches for small trees). Properties with greater fire potential such as steeper slopes or more severe fire danger will require pruning heights in the upper end of this range.
 - Remove all ground fuels greater than four inches in height. Single specimens of trees or other vegetation may be kept if they are well-spaced, well-pruned and create an overall condition that avoids the spread of fire to other vegetation or to structures.

June, 2007

100' DEFENSIBLE SPACE Make Your Home FIRE SAFE



Why 100 Feet?

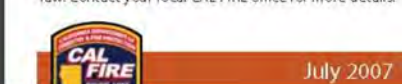
- Following these simple steps can dramatically increase the chance of your home surviving a wildfire!
- A Defensible Space of 100 feet around your home is required by law. The goal is to protect your home while providing a safe area for firefighters.
- 1. "Lean, Clean and Green Zone"**
Clearing an area of 30 feet immediately surrounding your home is critical. This area requires the greatest reduction in flammable vegetation.
- 2. "Reduced Fuel Zone"**
The fuel reduction zone in the remaining 70 feet (or to property line) will depend on the steepness of your property and the vegetation.

Spacing between plants improves the chance of stopping a wildfire before it destroys your home. You have two options in this area:

- Create horizontal and vertical spacing between plants. The amount of space will depend on how steep the slope is and the size of the plants.
- Large trees do not have to be cut and removed as long as all of the plants beneath them are removed. This eliminates a vertical "fire ladder."

When clearing vegetation, use care when operating equipment such as lawnmowers. One small spark may start a fire; a string trimmer is much safer.
Remove all build-up of needles and leaves from your roof and gutters. Keep tree limbs trimmed at least 10 feet from any chimneys and remove dead limbs that hang over your home or garage. The law also requires a screen over your chimney outlet of not more than 1/2 inch mesh.

1. These regulations affect most of the grass, brush, and timber-covered private lands in the State. Some fire departments may have additional requirements. Some activities may require permits for tree removal. Also, some activities may require special procedures for: 1) removal of endangered species, 2) grading activities, and 3) preservation of water quality. Check with local officials if in doubt. Current regulations about insurance companies to require additional clearance. The areas to be treated does not extend beyond your property. The State Board of Forestry and Fire Protection has approved Guidelines to assist you in complying with the new law. Contact your local CAL FIRE office for more details.



F+H Fletcher + Hardoin Architects
760 Pacific Street
Menlo Park, CA 94025
831-373-5855
www.fletcherhardoin.com

LS ENGINEERING AND SURVEYING, INC.
2460 Garden Road, Suite G, Monterey, California 93940
P: 831.655.2723 F: 831.655.3425
LandEngineers.com

PEBBLE BEACH COMPANY
P.O. BOX 1767 PEBBLE BEACH, CALIFORNIA 93953
(831) 624-8900
PARCEL INFORMATION: 008-041-009
PARCEL 6, VOLUME 15, CITIES AND TOWNS, PAGE 52

AREA D
DEL MONTE FOREST PRESERVATION AND DEVELOPMENT PLAN
AREA D INCLUSIONARY HOUSING
PRELIMINARY FUEL MANAGEMENT PLAN

IH-10.1
DATE: JULY 2013