

COASTAL ACCESS AREAS

INDIAN VILLAGE

AREA L

COASTAL ACCESS AREAS

AREA I-1

AREA M

AREA O

AREA N

AREA V

AREA U

AREA B

NAVAJO TRACT

AREA C

AREA F-1

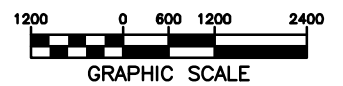
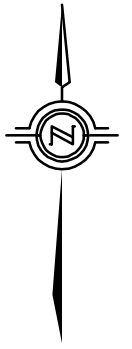
HUCKLEBERRY HILL AND  
SFB MORSE AREAS

AREA F-3

AREA G

AREA H

AREA PQR



△ REVISE I-1 BOUNDARY

© 2011 PEBBLE BEACH COMPANY, ALL RIGHTS RESERVED

I:\Pebble Beach Planning\dwg\Preservation\_AREAS.dwg 6/16/2011 11:43:27 AM PDE\_XChange 3.0

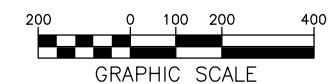
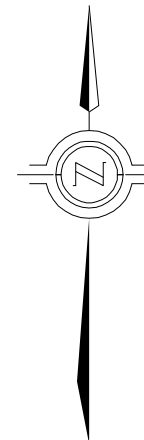
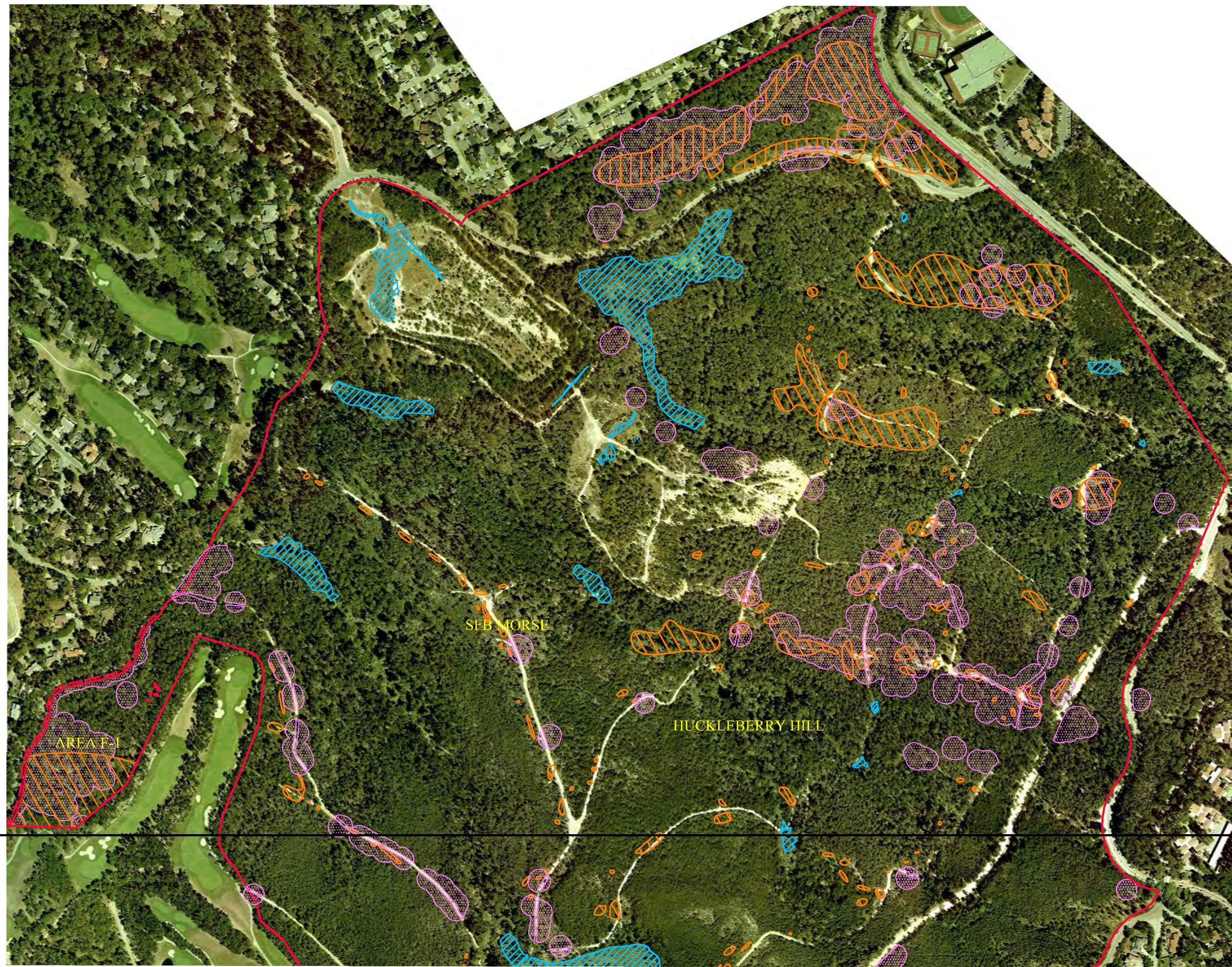


**PEBBLE BEACH COMPANY**  
P.O. BOX 1767 PEBBLE BEACH, CALIFORNIA 93953  
(831) 624-8497

PARCEL  
INFORMATION

**PRESERVATION AND RESTORATION AREAS**  
DEL MONTE FOREST PLAN  
SITE MAP

**P-1**  
DATE: MAY 2011



### PRESERVATION ACREAGE

INCLUDING EASEMENTS		
AREA	PARCEL	EASEMENT TOTAL
AREA F-1 =	9.77 AC	0.47 AC
AREA F-3 =	16.81 AC	0.31 AC
AREA G =	59.97 AC	0.56 AC
AREA H =	49.81 AC	1.08 AC
CORE YARD =	6.98 AC	0.00 AC
<b>NEW PRESERVATION TOTAL</b>	<b>145.74 AC</b>	
EXISTING HHMA PRESERVE		375.88 AC
EXISTING SFB MORSE PRESERVE		83.94 AC
<b>TOTAL PRESERVATION</b>		<b>605.56 AC</b>

### AREA F-1, F-3, G, H, HUCKLEBERRY HILL AND SFB MORSE

- YADON'S PIPERIA (OCCURRENCE AREA, ZANDER 2004/2005)
- HOOKERS MANZANITA (HIGH DENSITY, ZANDER 2001)
- HOOKERS MANZANITA (MEDIUM DENSITY, ZANDER 2001)
- HOOKERS MANZANITA (LOW DENSITY, ZANDER 2001)
- WETLAND AREAS (WRA 2001, 2003)
- GOWEN CYPRESS (ZANDER 2001)

MATCHLINE  
SEE SHEET P-3

MATCHLINE  
SEE SHEET P-3

C:\Peble Beach Planning\DelMonteForestPlan\F-1\_P-1\_HHMA.dwg SHEET\_P-2\_T02011 11:46:50 AM, pdf, TabColor/ANR B, 12/09/14

▲ ADDED ACREAGE AND EASEMENTS

© 2011 PEBBLE BEACH COMPANY, ALL RIGHTS RESERVED

**WWD**  
 engineering // surveying // planning  
 2001 monterey-salinas highway // monterey, ca 93940  
 tel: (831) 655-2723 fax: (831) 655-3425  
 e-mail: mail@wwdengineering.com

**PEBBLE BEACH COMPANY**  
 P.O. BOX 1767 PEBBLE BEACH, CALIFORNIA 93953  
 (831) 624-8497

PARCEL INFORMATION: EL PESCADERO RANCHO, MONTEREY COUNTY, CALIFORNIA

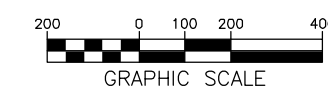
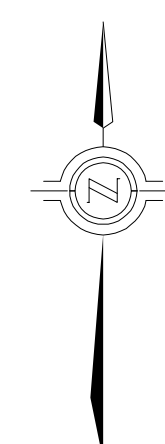
**PRESERVATION MAP**  
 DEL MONTE FOREST PLAN  
**AREA F-1, F-3, G, H, HUCKLEBERRY HILL & SFB MORSE**  
 BIOLOGICAL RESOURCES MAP

**P-2**

DATE: MAY 2011

MATCHLINE  
SEE SHEET P-2

MATCHLINE  
SEE SHEET P-2



**PRESERVATION ACREAGE**

AREA	INCLUDING EASEMENTS		TOTAL
	PARCEL	EASEMENT	
AREA F-1	9.77 AC	0.47 AC	10.24 AC
AREA F-3	16.81 AC	0.31 AC	17.12 AC
AREA G	59.97 AC	0.56 AC	60.53 AC
AREA H	49.81 AC	1.08 AC	50.89 AC
CORP. YARD	6.96 AC	0.00 AC	6.96 AC
<b>NEW PRESERVATION TOTAL</b>			<b>145.74 AC</b>
EXISTING HHNA PRESERVE			375.88 AC
EXISTING SFB MORSE PRESERVE			83.94 AC
<b>TOTAL PRESERVATION</b>			<b>605.56 AC</b>

**AREA F-1, F-3, G, H, HUCKLEBERRY HILL AND SFB MORSE**

- YADON'S PIPERIA (OCCURRENCE AREA, ZANDER 2004/2005)
- HOOKERS MANZANITA (HIGH DENSITY, ZANDER 2001)
- HOOKERS MANZANITA (MEDIUM DENSITY, ZANDER 2001)
- HOOKERS MANZANITA (LOW DENSITY, ZANDER 2001)
- HICKMAN'S ONION (ZANDER 2001)
- WETLAND AREAS (WRA 2001, 2003)
- BISHOP PINE / GOWEN CYPRESS FOREST (ZANDER 2001)
- MONTEREY CLOVER (ZANDER 2001)
- GOWEN CYPRESS (ZANDER 2001)

▲ ADDED ACREAGE AND EASEMENTS  
© 2011 PEBBLE BEACH COMPANY, ALL RIGHTS RESERVED

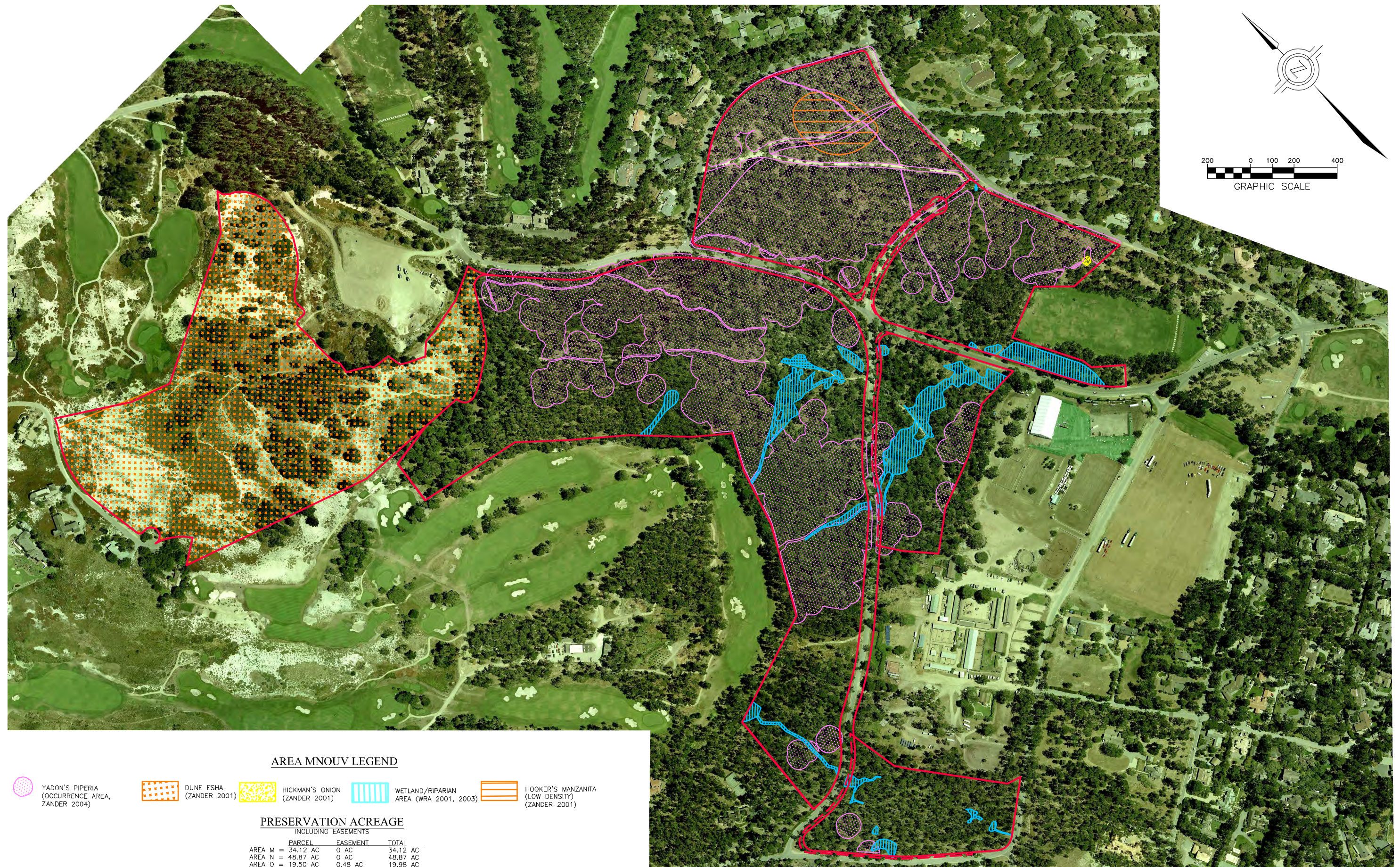
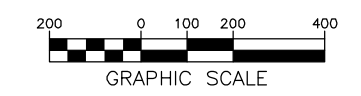
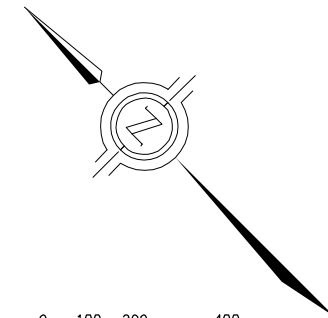
Pebble Beach Planning & Design Observations: F-1, F-3, G, H, HHNA, Hwy, SHEET P-3, 7/26/2011 12:00:53 PM, Jeff Tahara/ANSR B, 12/29/09

**WWD**  
engineering // surveying // planning  
2801 monterey-salinas highway // monterey, ca 93940  
tel: (831) 655-2723 fax: (831) 655-3425  
e-mail: mail@wwdengineering.com






**PEBBLE BEACH COMPANY**  
P.O. BOX 1767 PEBBLE BEACH, CALIFORNIA 93953  
(831) 624-8497  
PARCEL INFORMATION: EL PESCADERO RANCHO, MONTEREY COUNTY, CALIFORNIA

**PRESERVATION MAP**  
DEL MONTE FOREST PLAN  
AREA F-1, F-3, G, H, HUCKLEBERRY HILL & SFB MORSE  
BIOLOGICAL RESOURCES MAP

**P-3**  
DATE: MAY 2011



**AREA MNOUV LEGEND**

-   
 YADON'S PIPERIA  
 (OCCURRENCE AREA,  
 ZANDER 2004)
-   
 DUNE ESHA  
 (ZANDER 2001)
-   
 HICKMAN'S ONION  
 (ZANDER 2001)
-   
 WETLAND/RIPARIAN  
 AREA (WRA 2001, 2003)
-   
 HOOKER'S MANZANITA  
 (LOW DENSITY)  
 (ZANDER 2001)

**PRESERVATION ACREAGE  
INCLUDING EASEMENTS**

	PARCEL	EASEMENT	TOTAL
AREA M =	34.12 AC	0 AC	34.12 AC
AREA N =	48.87 AC	0 AC	48.87 AC
AREA O =	19.50 AC	0.48 AC	19.98 AC
AREA U =	16.69 AC	0.75 AC	17.44 AC
AREA V =	12.56 AC	0.20 AC	12.76 AC
<b>TOTAL</b>			<b>133.17 AC</b>

▲ ADDED ACREAGE AND EASEMENTS

© 2011 PEBBLE BEACH COMPANY, ALL RIGHTS RESERVED

P:\Pebble Beach Planning\Preservation MNOUV.dwg, 2010/04/14, 11:07:16 AM, JKH, Tabloid/ANSI B, 12.00113

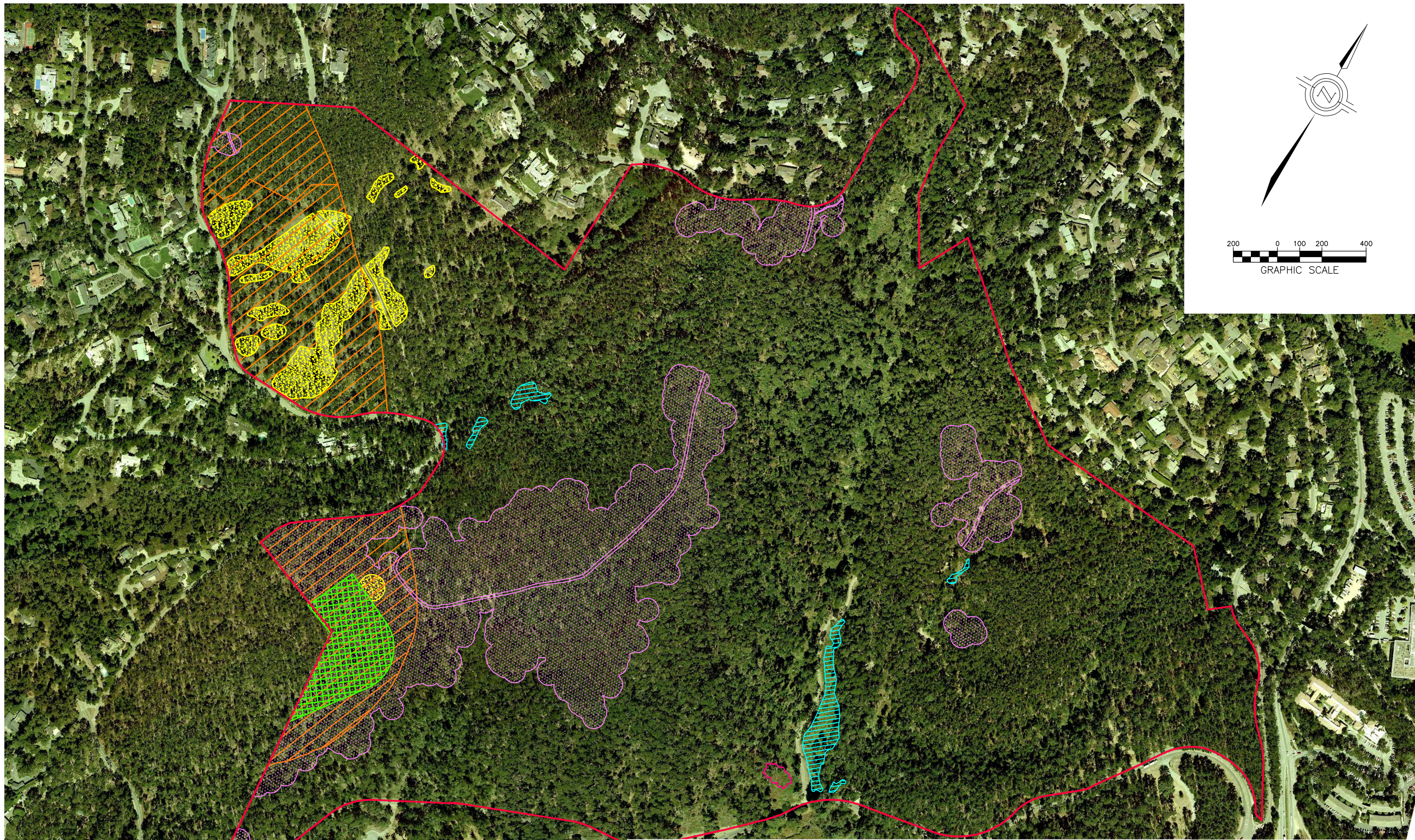


**PEBBLE BEACH COMPANY**  
 P.O. BOX 1767 PEBBLE BEACH, CALIFORNIA 93953  
 (831) 624-8497

PARCEL INFORMATION: EL PESCADERO RANCHO, MONTEREY COUNTY, CALIFORNIA

**PRESERVATION MAP**  
 DEL MONTE FOREST PLAN  
 AREA MNOUV  
 BIOLOGICAL RESOURCES MAP


**P-4**  
 DATE: MAY 2011



**PRESERVATION ACREAGE**

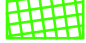
	PARCEL	EASEMENT	TOTAL
AREA PQR =	245.89 AC	0 AC	245.89 AC


 YADON'S PIPERIA  
(OCCURRENCE AREA,  
ZANDER 2004)


 HOOKER'S MANZANITA  
(MEDIUM DENSITY)  
(ZANDER 2001)

 HICKMAN'S ONION  
(ZANDER 2001)

 WETLAND/RIPARIAN  
AREA  
(WRA 2001, 2003)

 SANDMAT MANZANITA  
(ZANDER 2001)

 WOODRATS NEST  
(ZANDER 2001)

 ADDED ACREAGE

© 2011 PEBBLE BEACH COMPANY, ALL RIGHTS RESERVED



**PEBBLE BEACH COMPANY**  
P.O. BOX 1767 PEBBLE BEACH, CALIFORNIA 93953  
(831) 624-8497

PARCEL INFORMATION: EL PESCADERO RANCHO, MONTEREY COUNTY, CALIFORNIA

**PRESERVATION MAP**  
DEL MONTE FOREST PLAN  
AREA PQR  
BIOLOGICAL RESOURCES MAP

P-5

DATE: MAY 2011

L:\Pebble Beach Planning\DelMonteForestPlan\AreaPQR\Map\20110511\11:11:21 AM\_jdk\_Tables\ANSI\_B\_12.dwg



INDIAN VILLAGE

AREA L LEGEND



YADON'S PIPERIA  
(OCCURRENCE AREA, ZANDER  
2004)



DUNE HABITAT  
COASTAL STRAND  
(ZANDER 2001)



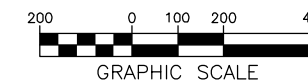
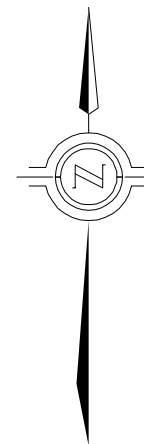
WETLAND AREA  
(WRA 2001, 2003)



RIPARIAN  
(WRA 2001, 2003)

PRESERVATION ACREAGE

INCLUDING EASEMENTS		
PARCEL	EASEMENT	TOTAL
AREA B = 12.07 AC	0.74 AC	12.81 AC



▲ ADDED ACREAGE AND EASEMENTS

© 2011 PEBBLE BEACH COMPANY, ALL RIGHTS RESERVED



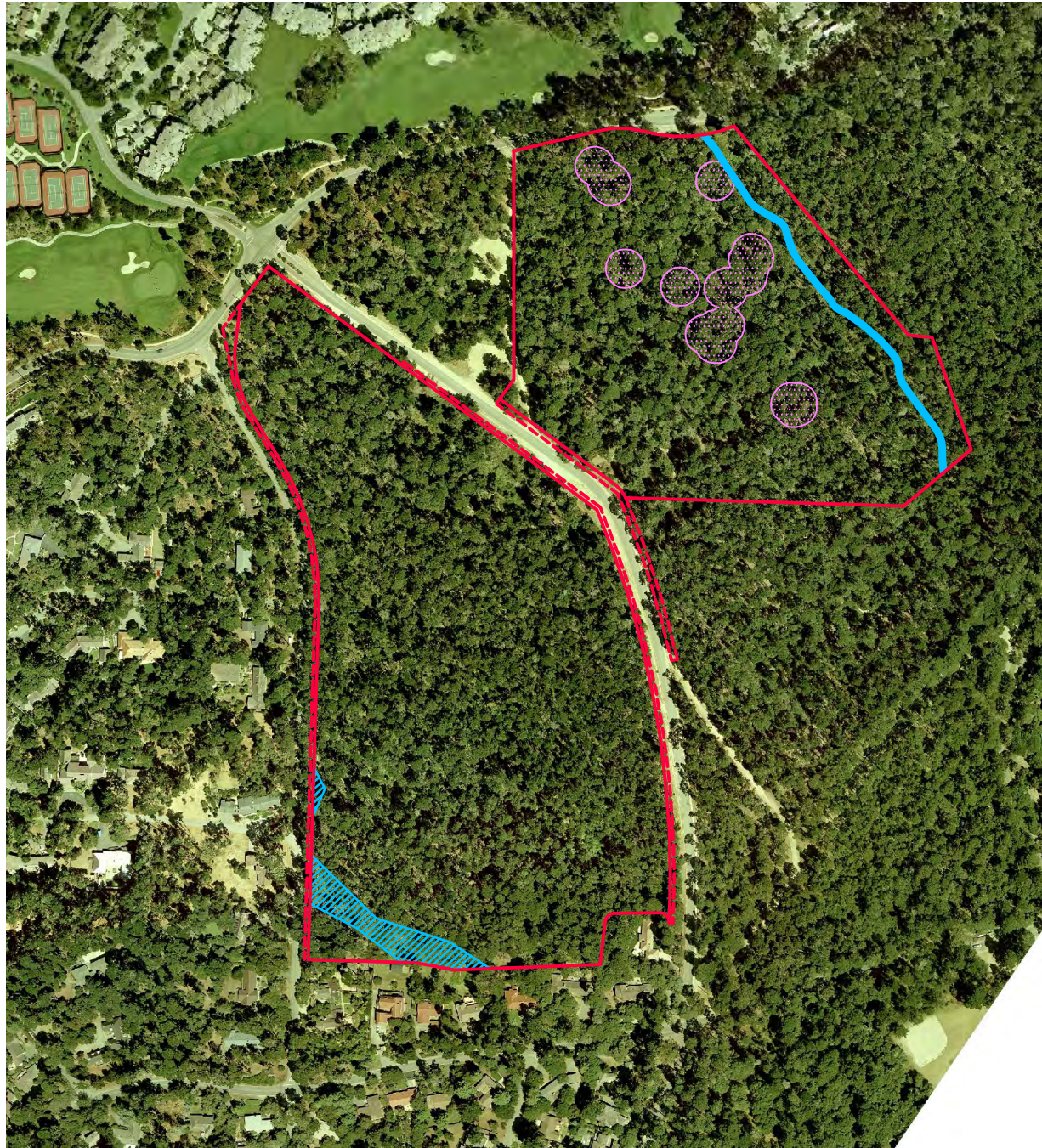
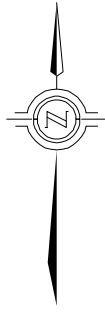
PEBBLE BEACH COMPANY  
P.O. BOX 1767 PEBBLE BEACH, CALIFORNIA 93953  
(831) 624-8497

PARCEL INFORMATION: EL PESCADERO RANCHO, MONTEREY COUNTY, CALIFORNIA

PRESERVATION MAP  
DEL MONTE FOREST PLAN  
AREA L  
BIOLOGICAL RESOURCES MAP

P-6

DATE: MAY 2011

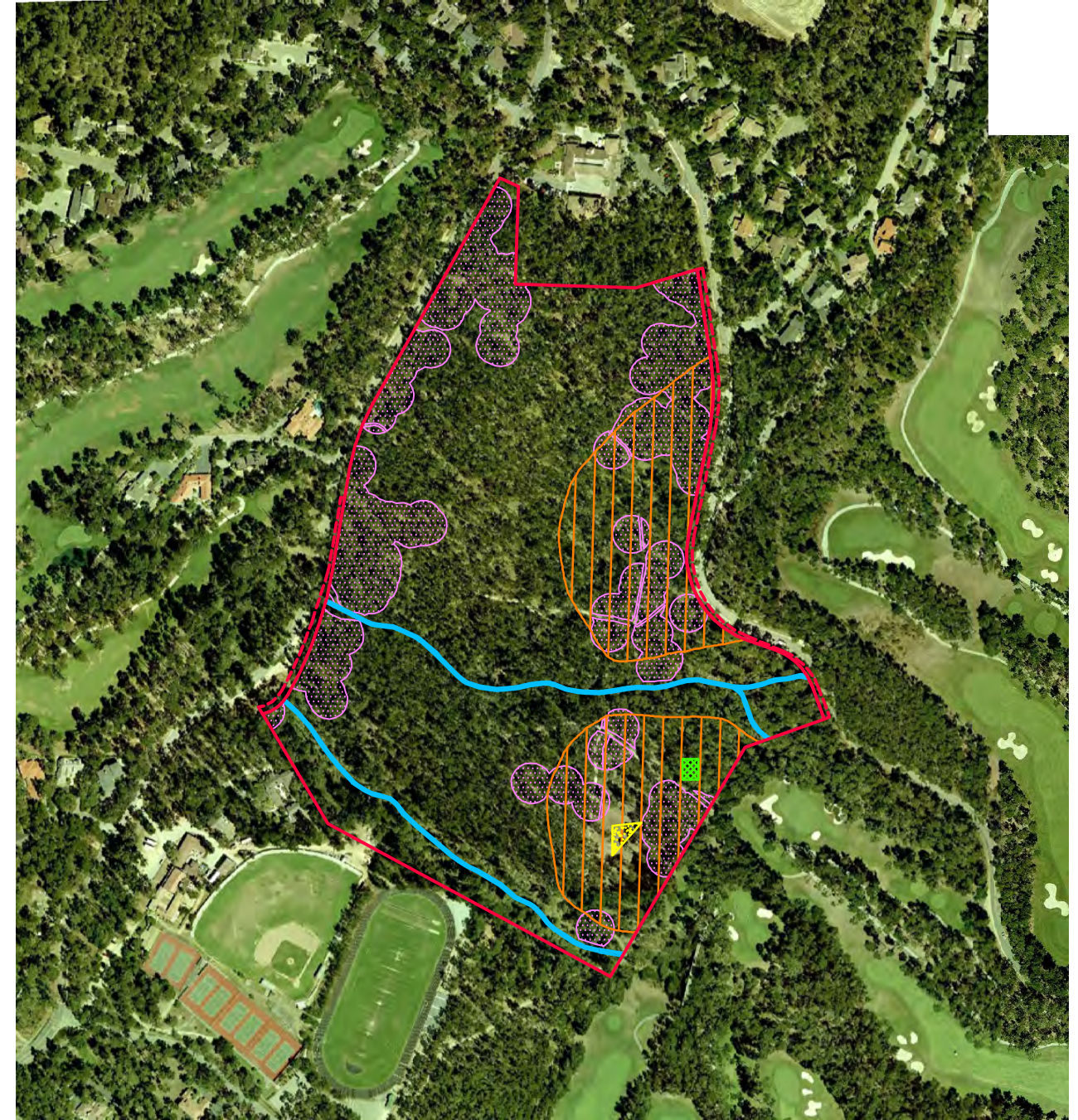
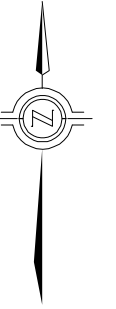
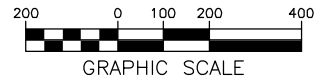


**AREA B&C LEGEND**

- YADON'S PIPERIA (OCCURRENCE AREA, ZANDER 2004)
- WETLAND AREA (WRA 2001, 2003)
- RIPARIAN (WRA 2001, 2003)

**PRESERVATION ACREAGE INCLUDING EASEMENTS**

AREA	PARCEL	EASEMENT	TOTAL
AREA B =	19.74 AC	0.29 AC	19.74 AC
AREA C =	29.05 AC	0.83 AC	29.88 AC
<b>TOTAL</b>			<b>49.62 AC</b>

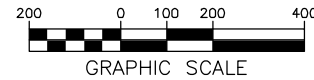


**AREA I-1 LEGEND**

- YADON'S PIPERIA (OCCURRENCE AREA, ZANDER 2004)
- HOOKER'S MANZANITA (HIGH DENSITY) (ZANDER 2001)
- HICKMAN'S UNION (ZANDER 2001)
- SANDMAT MANZANITA (ZANDER 2001)
- RIPARIAN (WRA 2001, 2003)

**PRESERVATION ACREAGE INCLUDING EASEMENTS**

AREA	PARCEL	EASEMENT	TOTAL
AREA I-1 =	38.16 AC	0.66 AC	38.82 AC



▲ ADDED ACREAGE AND EASEMENTS

© 2011 PEBBLE BEACH COMPANY, ALL RIGHTS RESERVED

L:\Pebble Beach Planning\DelMonteForestPlan\BAC\_I-1.dwg, P-7\_200 SCALE: 7/6/2011 11:17:45 AM, JMK, Tabloid/ANSI B, 12.0000



**PEBBLE BEACH COMPANY**  
 P.O. BOX 1767 PEBBLE BEACH, CALIFORNIA 93953  
 (831) 624-8497

PARCEL INFORMATION: EL PESCADERO RANCHO, MONTEREY COUNTY, CALIFORNIA

**PRESERVATION MAP**  
 DEL MONTE FOREST PLAN  
 AREAS B&C AND I-1  
 BIOLOGICAL RESOURCES MAP





**P-7**

DATE: MAY 2011



**NOTES:**

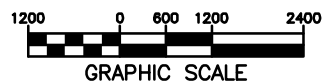
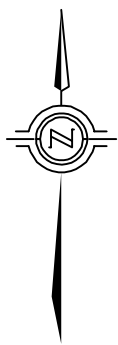
TRAIL SYSTEM SHOWN IS REPRESENTATIVE OF THE EXISTING DEL MONTE FOREST TRAIL SYSTEM. THOSE PORTIONS OF THE SYSTEM OUTSIDE THE PROPOSED PRESERVATION AND DEVELOPMENT AREA ARE INCLUDED FOR ILLUSTRATIVE PURPOSES TO SHOW HOW THE PROPOSED ON-SITE TRAIL SEGMENTS TIE INTO THE WHOLE.

-  EXISTING TRAILS (31.5 MILES)
-  PROPOSED TRAILS ON EXISTING DIRT ROADS OR FIRE ROADS (+2.1 MILES)
-  PROPOSED TRAILS (+1.8 MILES)
-  RELOCATED TRAILS (-1.5 MILES)

EXISTING HIKING & EQUESTRIAN TRAIL MILEAGE = 31.5

PROPOSED HIKING & EQUESTRIAN TRAIL MILEAGE = 33.9

 DEDICATED BICYCLE LANE (9.4 MILES TOTAL, 4.7 MILES EACH WAY)



△ REVISE TRAILS AND NOTES

© 2011 PEBBLE BEACH COMPANY, ALL RIGHTS RESERVED



**PEBBLE BEACH COMPANY**  
 P.O. BOX 1767 PEBBLE BEACH, CALIFORNIA 93953  
 (831) 624-8497

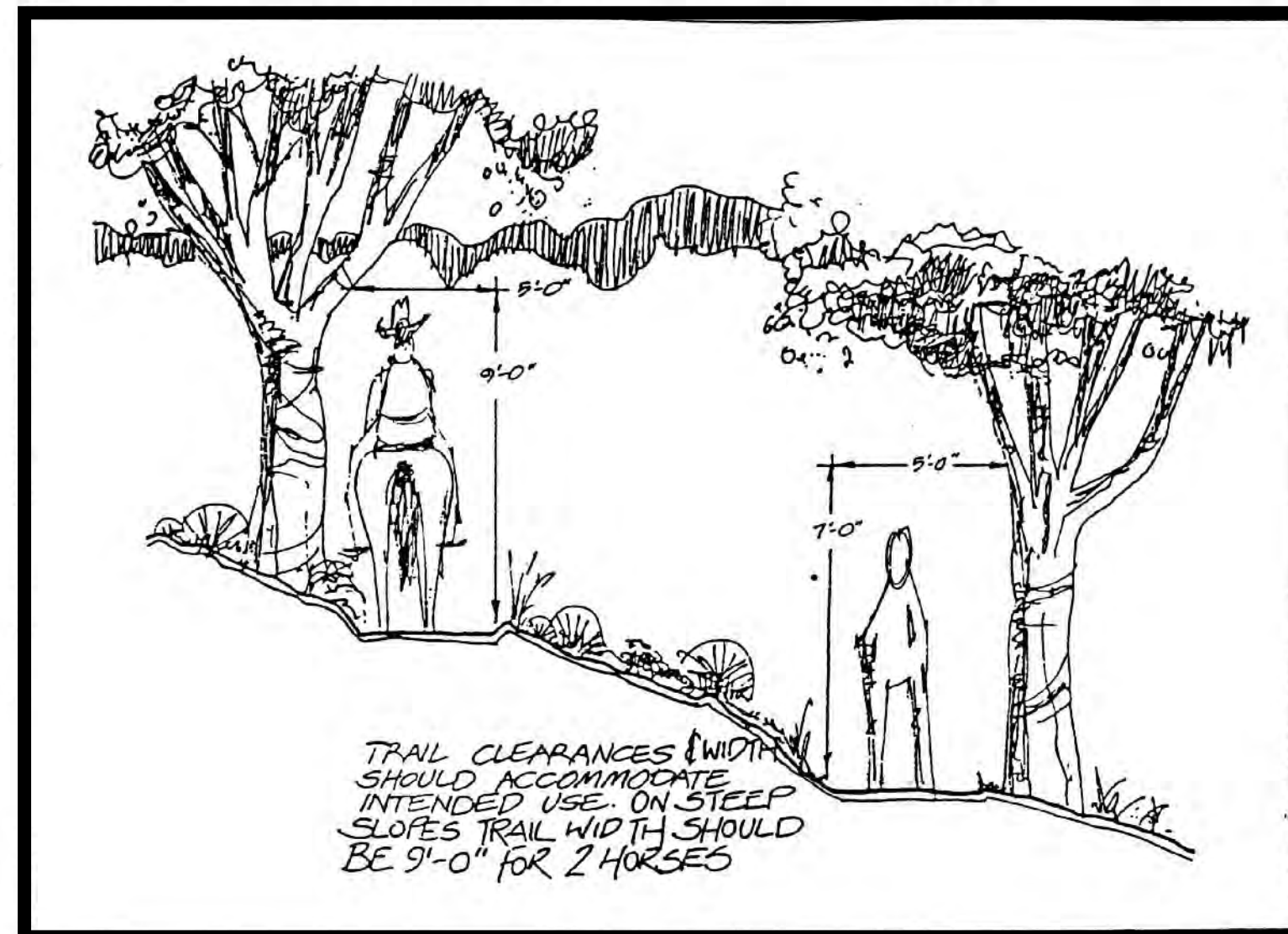
PARCEL INFORMATION: EL PESCADERO RANCHO, MONTEREY COUNTY, CALIFORNIA

**PRESERVATION AND RESTORATION AREAS**  
 DEL MONTE FOREST PLAN  
 TRAIL SYSTEM

**P-8**

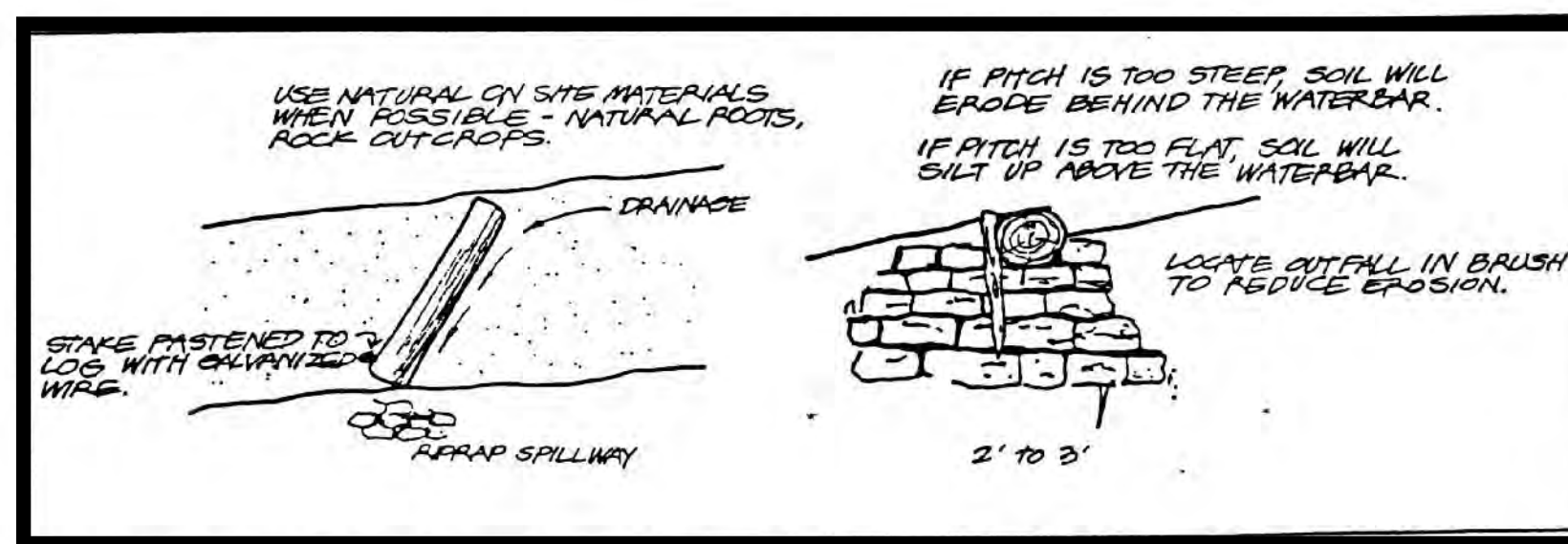
DATE: MAY 2011





In areas designated for handicapped access, such as to specially designated view points, to rest rooms, and to selected day use areas, special provisions should be made to provide hard surface level trail access for the disabled. Handicapped trails should be a minimum of 5 feet wide to allow a person to walk alongside a wheelchair.

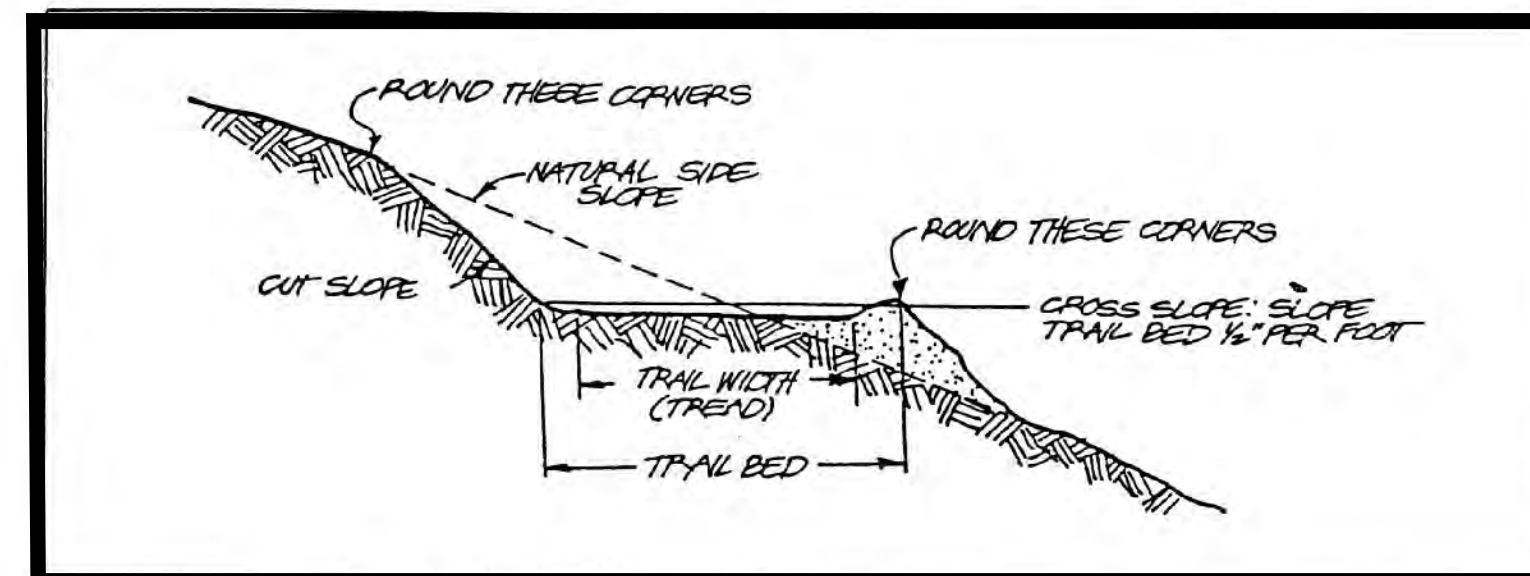
Waterbars are used for diverting water from trails. They should be installed where it is not feasible to drain accessways by cross sloping the surface. They may be constructed of rock or small diameter logs. Since waterbars present barriers to people with disabilities, they should not be installed on any accessway which is otherwise accessible to the disabled.



Adequate clearance should be provided along trails based on the use for which the trail is intended. Typical clearance criteria for pedestrian and equestrian usage is illustrated on the following page.

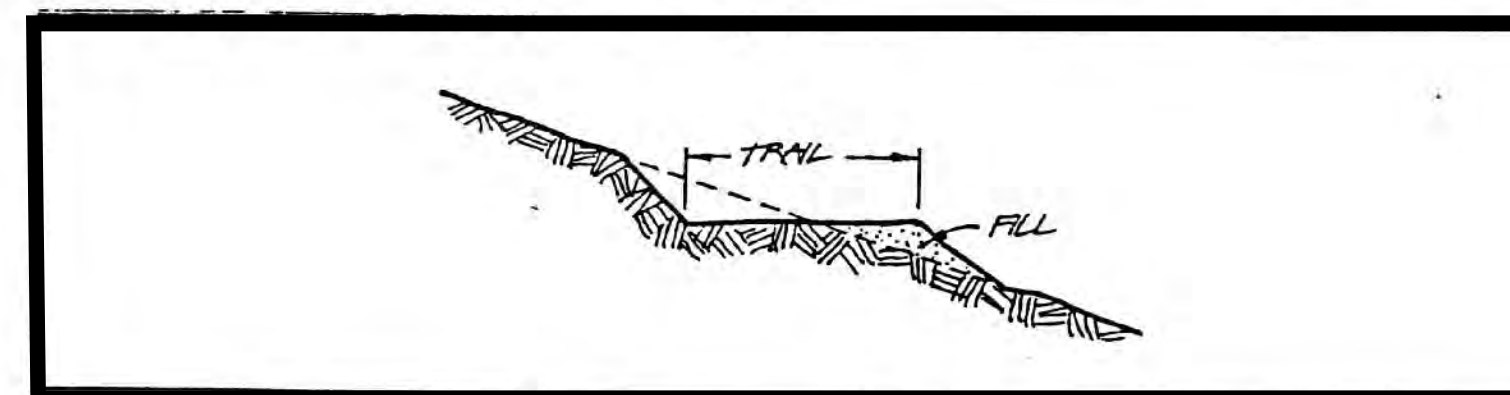
Source: Del Monte Forest LUP, Appendix B

**Trails.** Except where otherwise recommended, the standard width for trails primarily intended for pedestrian usage shall be 4 feet. This may vary depending on the specific nature of the terrain, expected level of usage, and natural environmental protection considerations. Basic design relationships for a typical trail section are shown on following page.

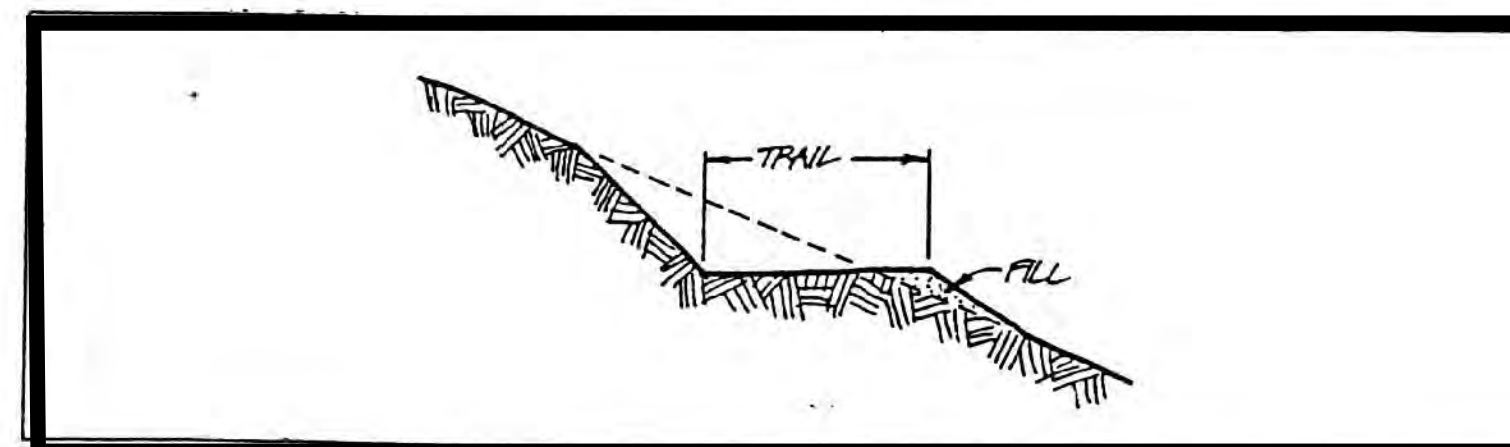


On side slopes of 10 percent or less, duff and leaf litter should be scraped from a trail to expose, but not remove, mineral soil. Grading is not recommended except to create a smooth trail surface.

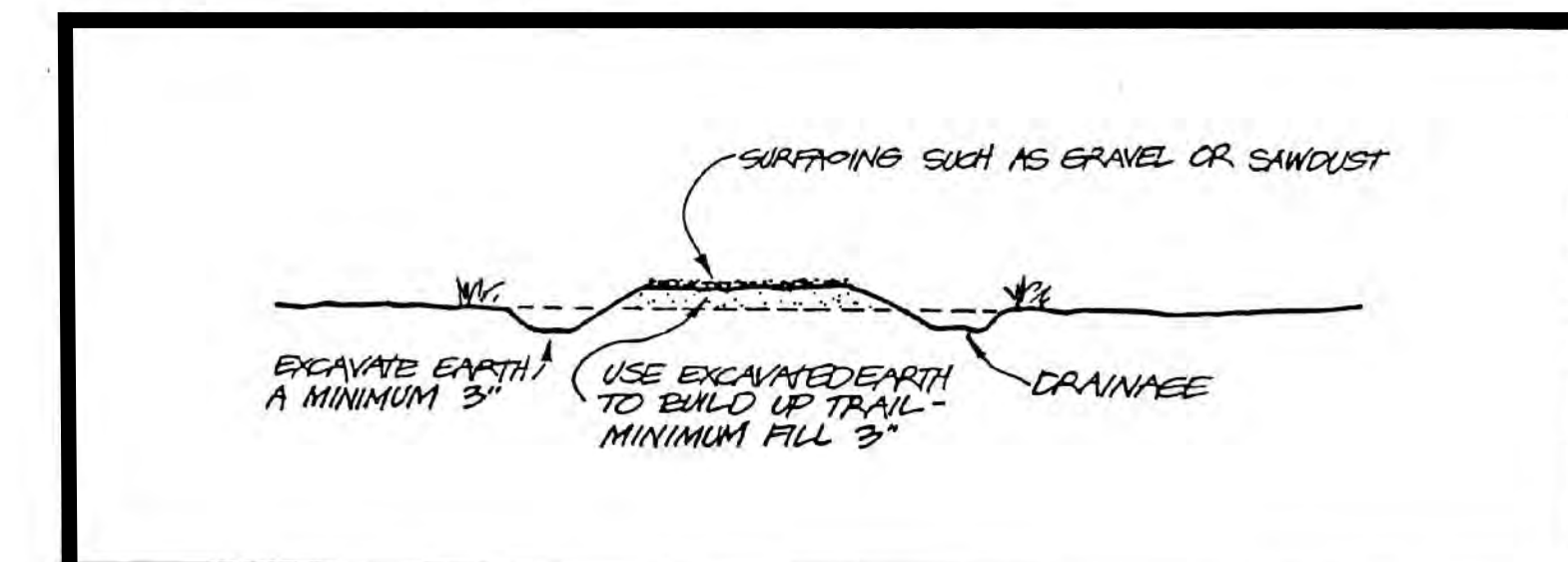
On side slopes between 10 and 30 percent, the trail should be constructed with a balanced bench section.



On side slopes exceeding 30 percent, the width of the trail should be decreased until at 40 percent the side slope of the trail bed is constructed on a 3/4 bench section.



Trails may occasionally cross seasonally wet areas, small drainage areas, or other areas where it is desirable to elevate the trail or provide drainage. In instances where minor drainage improvement is desirable, drain pipe should be used.



Steps may be constructed of railroad ties, lumber, logs, poles, stone, or other natural material. Examples of several types of natural step construction and anchoring are illustrated below. Wherever circumstances permit, it is recommended that similar materials be used to retain consistency in design.

