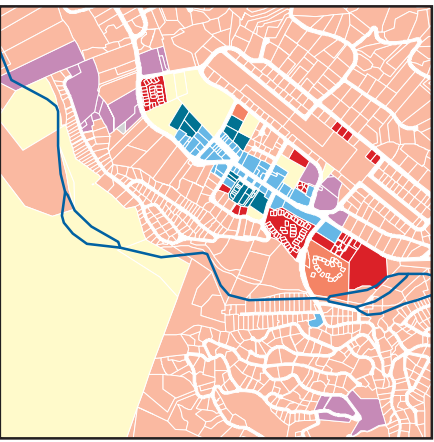
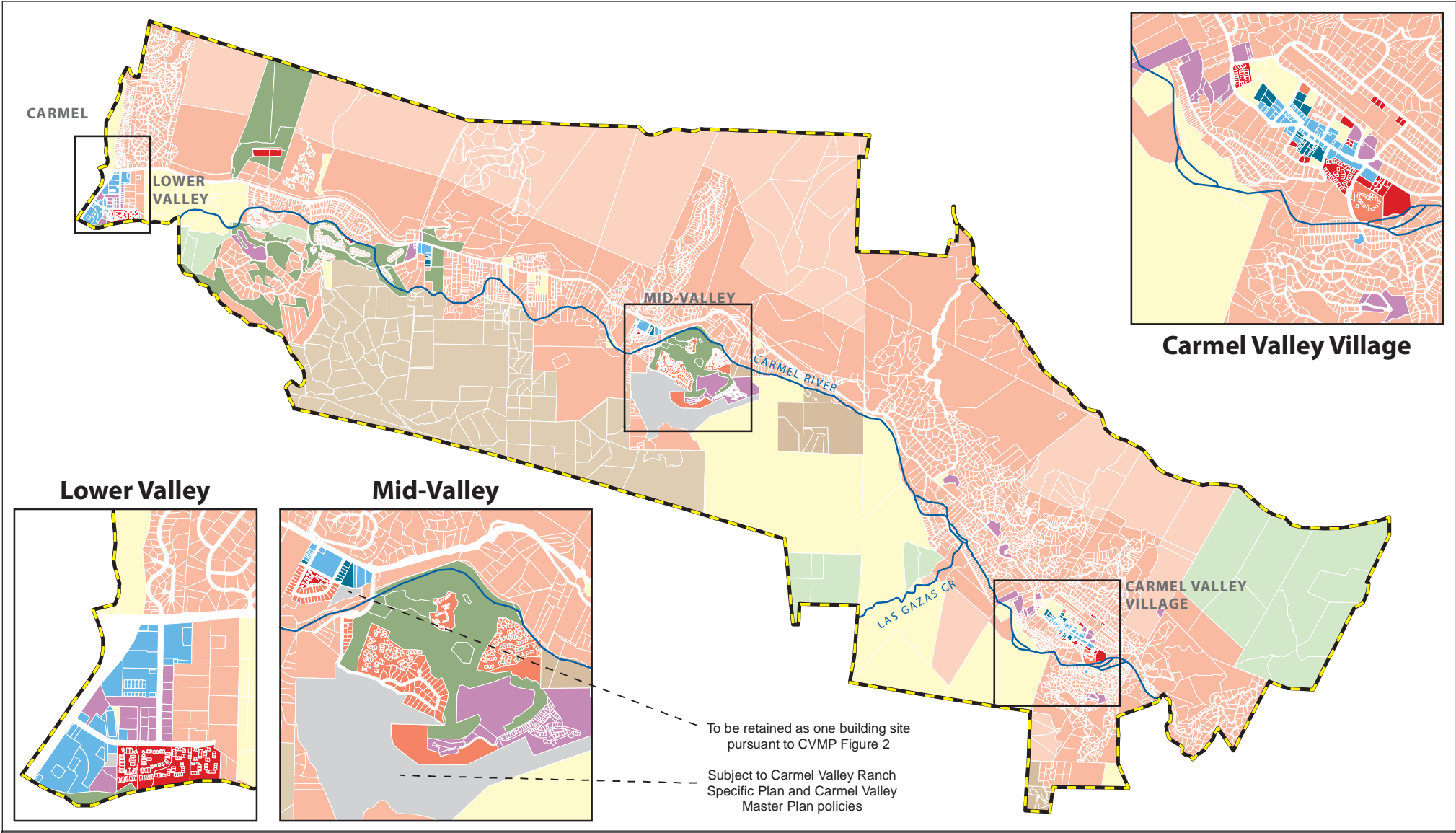
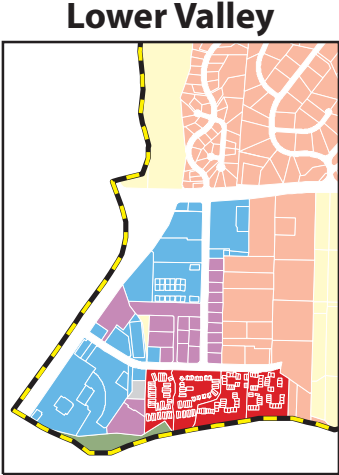


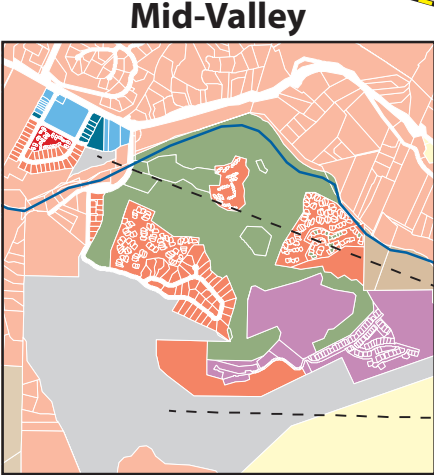
S:\GIS\PROJECTS\COUNTY\_OF\_MONTEREY\05335\_051\MAPDOC\FIG3-5-1\_LANDUSE.MXD PG. (10-25-06)



**Carmel Valley Village**



**Lower Valley**



**Mid-Valley**

To be retained as one building site pursuant to CVMP Figure 2

Subject to Carmel Valley Ranch Specific Plan and Carmel Valley Master Plan policies

### Carmel Valley Traffic Improvement Program SEIR

**Figure 3.5-1  
Land Use Designations**



- |                            |                    |                                     |
|----------------------------|--------------------|-------------------------------------|
| Rural Density Residential  | Light Commercial   | Open Space                          |
| Low-Density Residential    | Heavy Commercial   | Resource Conservation               |
| Medium-Density Residential | Rural Grazing      | Public/Quasi Public                 |
| High-Density Residential   | Permanent Grazing  | Visitor-Serving/Professional Office |
|                            | Under Review/Other | Program Area Boundary               |

Source: County of Monterey

