

PARAISO SPRINGS RESORT

SOLEDAD, CALIFORNIA

VIEW ANALYSIS

AUGUST 23, 2016

HKS

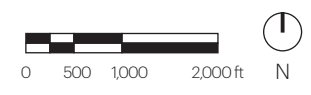


PARAISO SPRINGS RESORT

SOLEDAD, CALIFORNIA

VIEW ANALYSIS
Vantage Points

23 AUGUST 2016 1





GENERAL NOTES

- 1 TERRA COTTA ROOF
- 2 RUSTICAL COLOR CLAY TILE PLASTER
- 3 STONE VENEER
- 4 EXPOSED WOOD BAY/ICH
- 5 WOOD COLUMN
- 6 ALUMINUM CLAD WOOD DOOR/WINDOW SYSTEM
- 7 HANDICAP WOOD DOOR
- 8 WOOD BALCONY/RAILING
- 9 METAL BALCONY/RAILING
- 10 PRE-CAST /MDF
- 11 PRE-CAST SILL
- 12 DECORATIVE METAL GRILL
- 13 WOOD TRELLIS
- 14 METAL/WOOD GATE

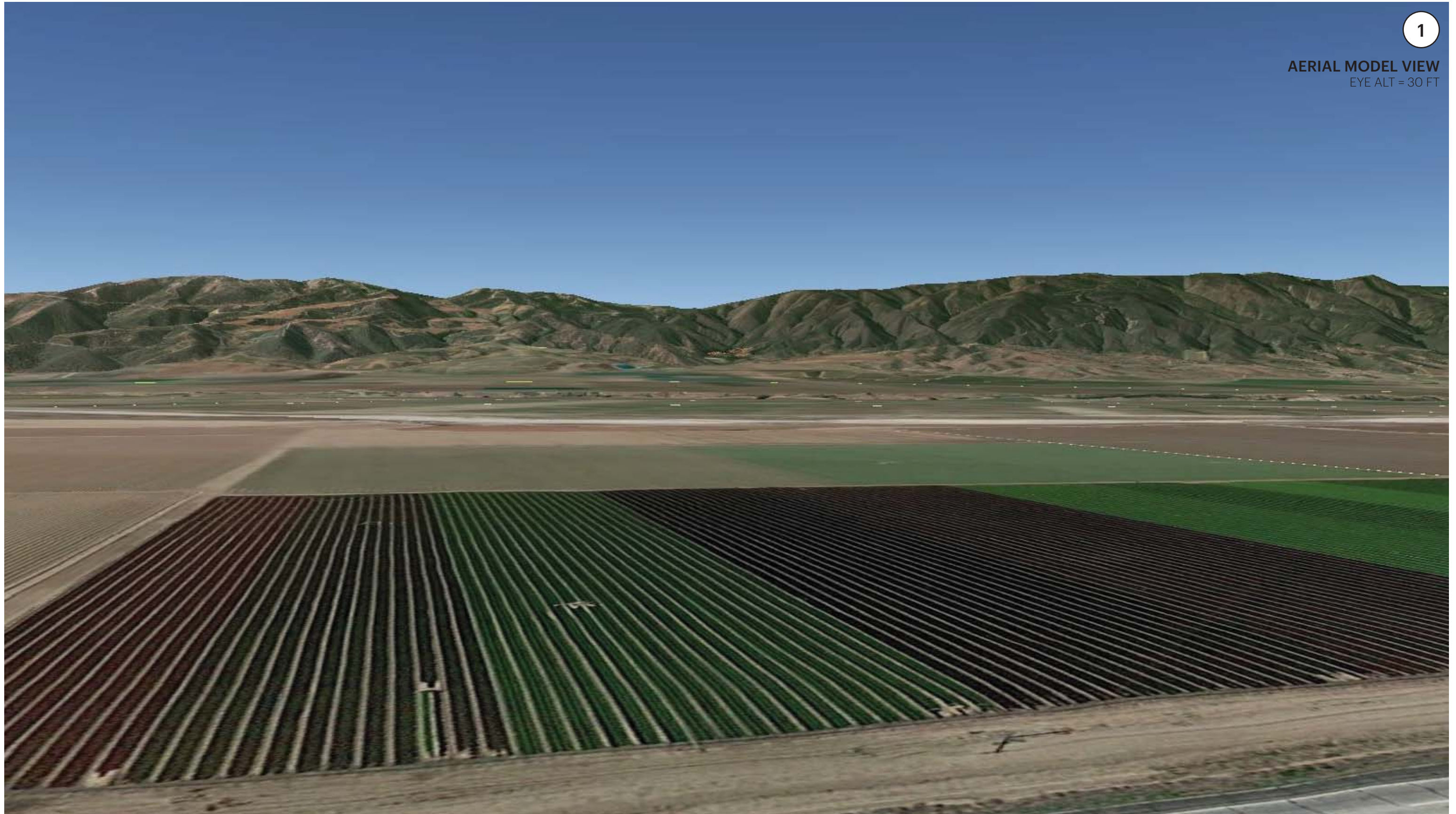
ALL FINISHES ARE SUBJECT TO MATERIAL AVAILABILITY. COLORS AND MATERIALS SHOWN ARE APPROXIMATE. SEE SPECIFICATIONS FOR MATERIALS. CONSULT ARCHITECT FOR ANY QUESTIONS.

© HKS GLAZIER ARCHITECTS, INC. 2016



1

AERIAL MODEL VIEW
EYE ALT = 30 FT



Bird's eye view looking West towards the Santa Lucia mountains from Highway 101 just north of the Hudson Road intersection.

VIEW STUDY 1
From HWY 101 and Hudson

23 AUGUST 2016 3

PARAISO SPRINGS RESORT

SOLEDAD, CALIFORNIA



1

EXISTING STREET VIEW
EYE ALT = 8 FT



Existing conditions as viewed from Highway 101 just north of the Hudson Road intersection.

VIEW STUDY 1
From HWY 101 and Hudson

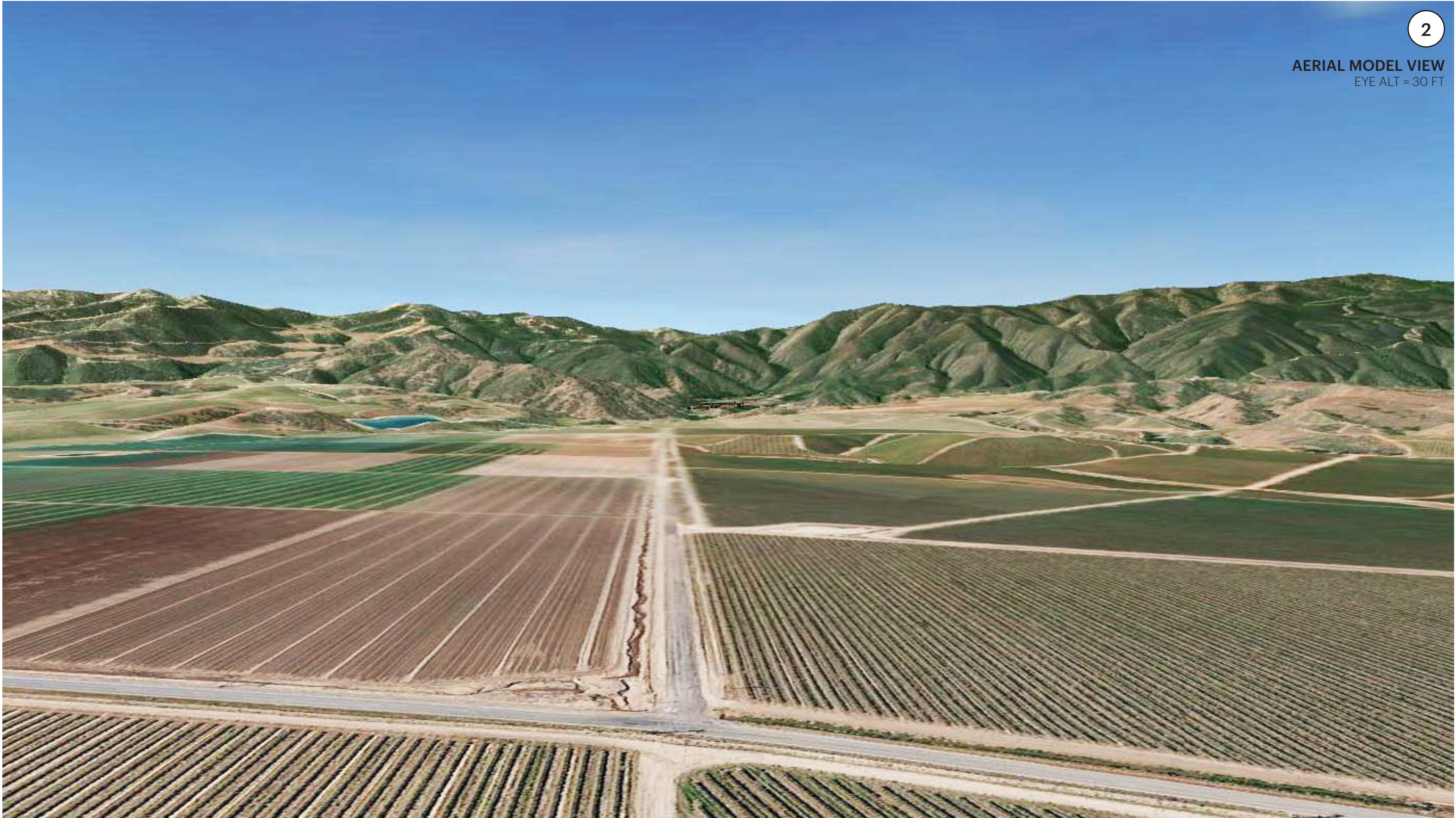
23 AUGUST 2016 4



Visual simulation as viewed from Highway 101 just north of the Hudson Road intersection.



Alternate visual simulation with relocated duplex units as viewed from Highway 101 just north of the Hudson Road intersection.



Bird's eye view looking West towards the Santa Lucia mountains from the intersection of Arroyo Seco Road and Clark Road.

VIEW STUDY 2
Intersection of Arroyo Seco Road and Clark Road



Existing conditions as viewed from the intersection of Arroyo Seco Road and Clark Road looking west.



Visual simulation as viewed from the intersection of Arroyo Seco Road and Clark Road looking west.

VIEW STUDY 2
Intersection of Arroyo Seco Road and Clark Road

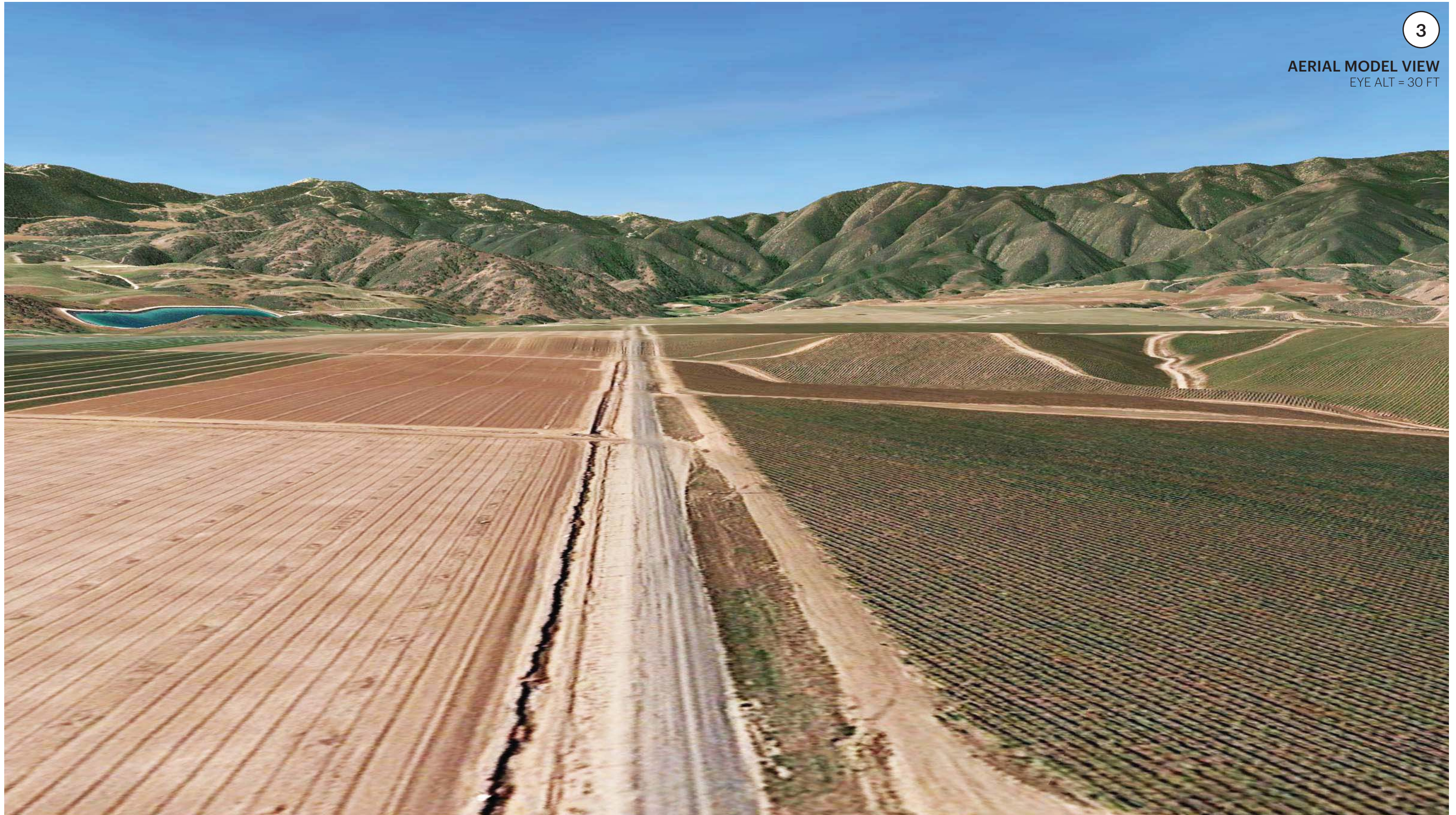


Alternate visual simulation with relocated duplex units as viewed from the intersection of Arroyo Seco Road and Clark Road looking west.

VIEW STUDY 2 ALT
Intersection of Arroyo Seco Road and Clark Road

3

AERIAL MODEL VIEW
EYE ALT = 30 FT



Bird's eye view looking West from Clark Road at the halfway point between Arroyo Seco Road and Paraiso Springs Road.

VIEW STUDY 3
Midpoint of Clark Road

23 AUGUST 2016 11

PARAISO SPRINGS RESORT

SOLEDAD, CALIFORNIA



3

EXISTING STREET VIEW
EYE ALT = 8 FT



Clark Rd

© 2016 Google

Google earth

Existing conditions as viewed from Clark Road at the halfway point between Arroyo Seco Road and Paraiso Springs Road.

VIEW STUDY 3
Midpoint of Clark Road

23 AUGUST 2016 12



Visual simulation as viewed from Clark Road at the halfway point between Arroyo Seco Road and Paraiso Springs Road.

VIEW STUDY 3
Midpoint of Clark Road

23 AUGUST 2016 13

PARAISO SPRINGS RESORT

SOLEDAD, CALIFORNIA



3

VISUAL SIMULATION
EYE ALT = 8 FT



Alternate visual simulation with relocated duplex units as viewed from Clark Road at the halfway point between Arroyo Seco Road and Paraiso Springs Road.

VIEW STUDY 3 ALT
Midpoint of Clark Road

PARAISO SPRINGS RESORT

SOLEDAD, CALIFORNIA

23 AUGUST 2016 14

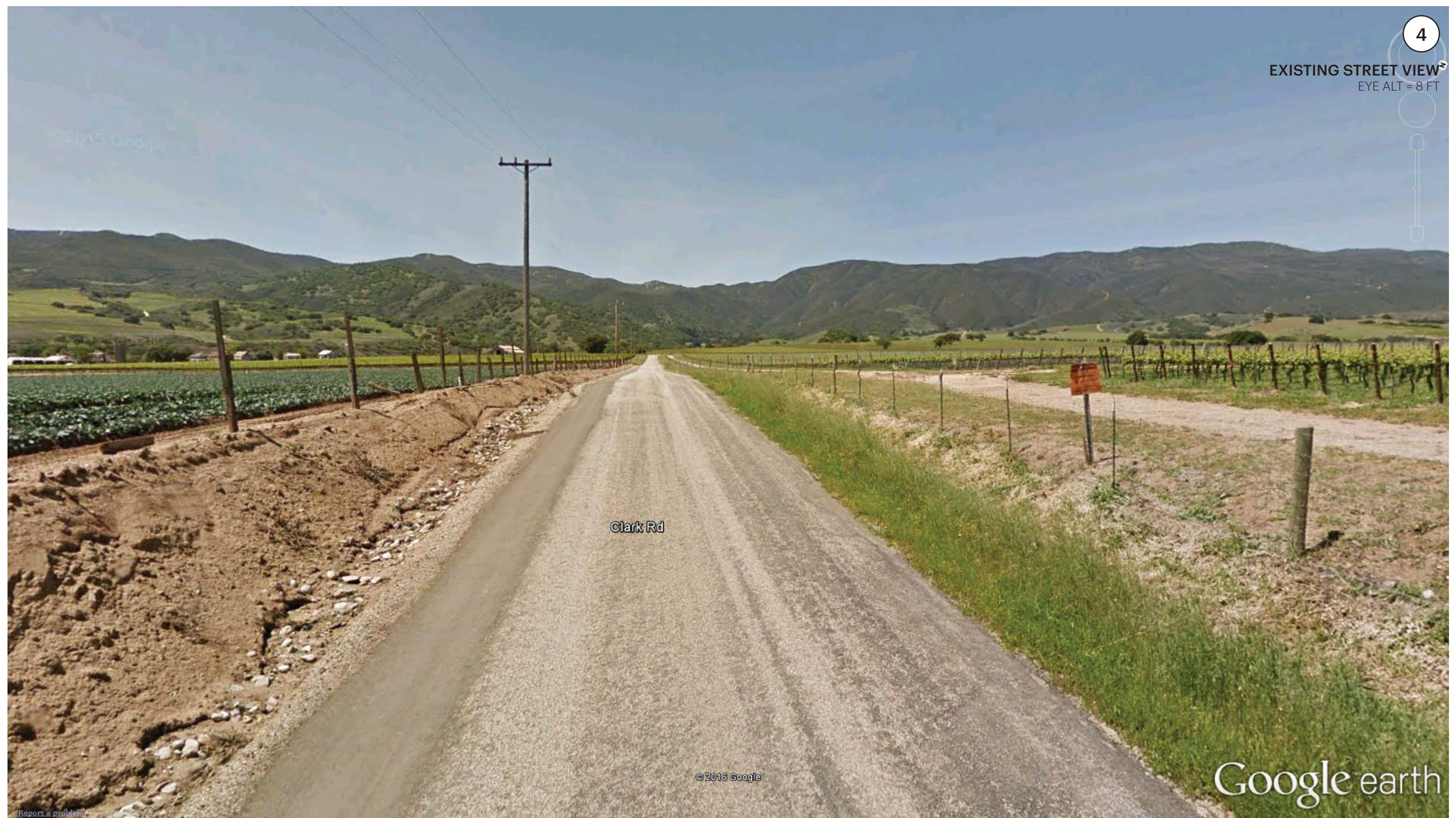




Bird's eye view looking West from Clark Road approaching the Paraiso Springs Road intersection.

4

EXISTING STREET VIEW
EYE ALT = 8 FT



Existing conditions as viewed from westbound Clark Road approaching the Paraiso Springs Road intersection.

VIEW STUDY 4
Clark Road Approaching Paraiso Springs Road Intersection

PARAISO SPRINGS RESORT

SOLEDAD, CALIFORNIA

23 AUGUST 2016 16





Visual simulation as viewed from westbound Clark Road approaching the Paraiso Springs Road intersection.

VIEW STUDY 4
Clark Road Approaching Paraiso Springs Road Intersection

23 AUGUST 2016 17

PARAISO SPRINGS RESORT

SOLEDAD, CALIFORNIA



Alternate visual simulation with relocated duplex units as viewed from westbound Clark Road approaching the Paraiso Springs Road intersection.

VIEW STUDY 4 ALT
Clark Road Approaching Paraiso Springs Road Intersection

PARAISO SPRINGS RESORT

SOLEDAD, CALIFORNIA

23 AUGUST 2016 18

HKS



Bird's eye view looking southwest into the valley from the southbound Paraiso Springs Road.



Existing conditions as viewed from southbound Paraiso Springs Road approaching the Clark Road intersection.

VIEW STUDY 5
Paraiso Springs Road Approaching Clark Road Intersection

PARAISO SPRINGS RESORT

SOLEDAD, CALIFORNIA

23 AUGUST 2016 20

HKS



Visual simulation as viewed from southbound Paraiso Springs Road approaching the Clark Road intersection.

VIEW STUDY 5
Paraiso Springs Road Approaching Clark Road Intersection

23 AUGUST 2016 21

PARAISO SPRINGS RESORT

SOLEDAD, CALIFORNIA



Alternate visual simulation with relocated duplex units as viewed from southbound Paraiso Springs Road approaching the Clark Road intersection.

VIEW STUDY 5 ALT
Paraiso Springs Road Approaching Clark Road Intersection

PARAISO SPRINGS RESORT

SOLEDAD, CALIFORNIA

23 AUGUST 2016 22





Bird's eye view looking west on Paraiso Springs Road approaching the valley.



Existing conditions as viewed from westbound Paraiso Springs Road approaching the valley.



Visual simulation as viewed from westbound Paraiso Springs Road approaching the valley.

VIEW STUDY 6
Passing Reservoir on Paraiso Springs Road

23 AUGUST 2016 25

PARAISO SPRINGS RESORT

SOLEDAD, CALIFORNIA



Alternate visual simulation with relocated duplex units as viewed from westbound Paraiso Springs Road approaching the valley.

VIEW STUDY 6 ALT
Passing Reservoir on Paraiso Springs Road

PARAISO SPRINGS RESORT

SOLEDAD, CALIFORNIA

23 AUGUST 2016 26



Bird's eye view over Paraiso Springs Road curving southwest into the valley.



Existing conditions as viewed from westbound Paraiso Springs Road entering the valley.



Visual simulation as viewed from westbound Paraiso Springs Road entering the valley.

VIEW STUDY 7
Paraiso Springs Road Approaching Valley

23 AUGUST 2016 29

PARAISO SPRINGS RESORT

SOLEDAD, CALIFORNIA



Alternate visual simulation with relocated duplex units as viewed from westbound Paraiso Springs Road entering the valley.

VIEW STUDY 7 ALT
Paraiso Springs Road Approaching Valley

23 AUGUST 2016 30

PARAISO SPRINGS RESORT

SOLEDAD, CALIFORNIA

