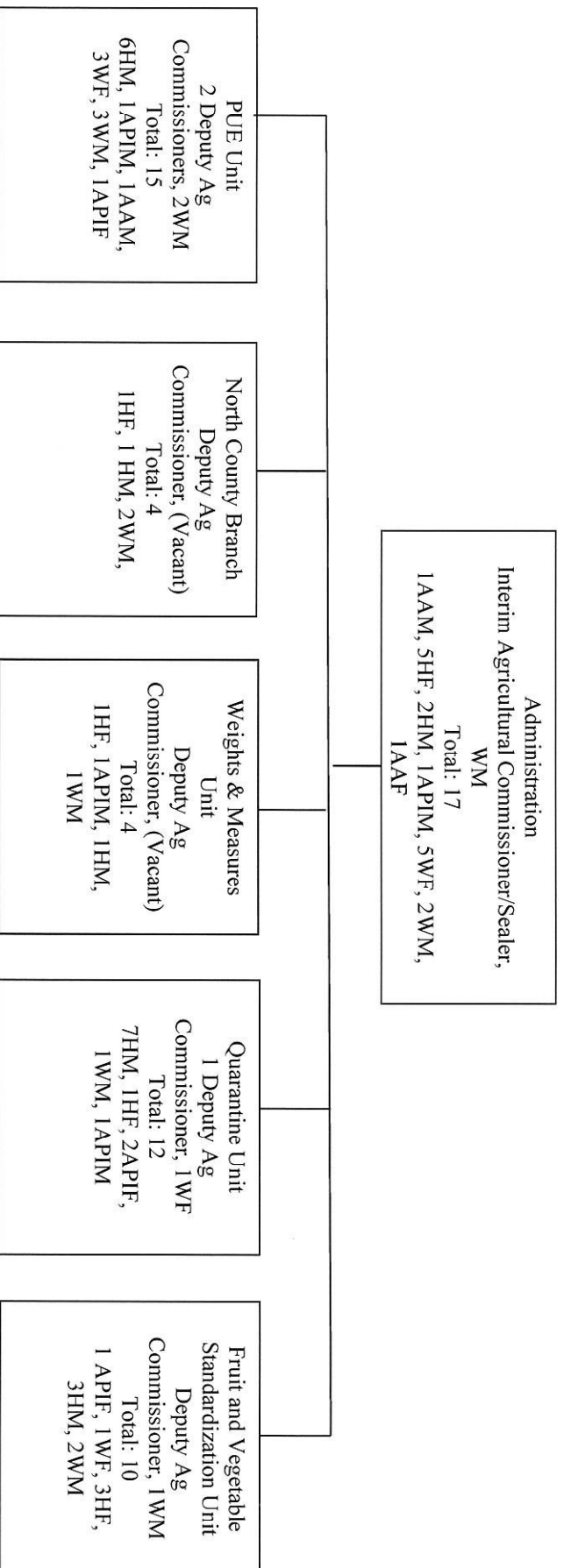


Section 2

Organizational Profile Agricultural Commissioner's Office

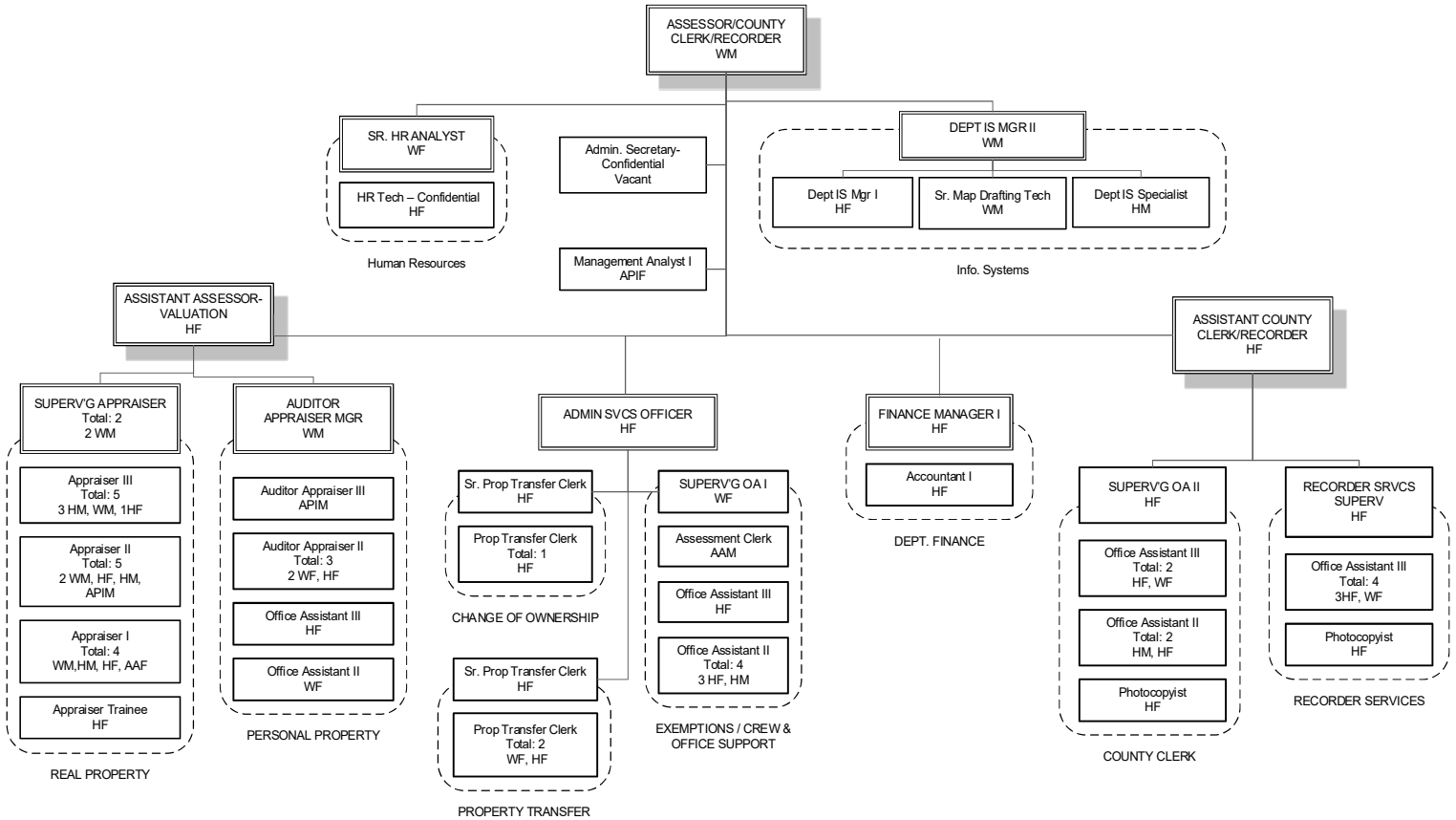


M – Male F – Female

AA - African American; H – Hispanic; API – Asian/Pacific Islander; W - White other than Hispanic; AI – American Indian/Alaskan Native

Section 2

Organizational Profile Assessor, County Clerk-Recorder



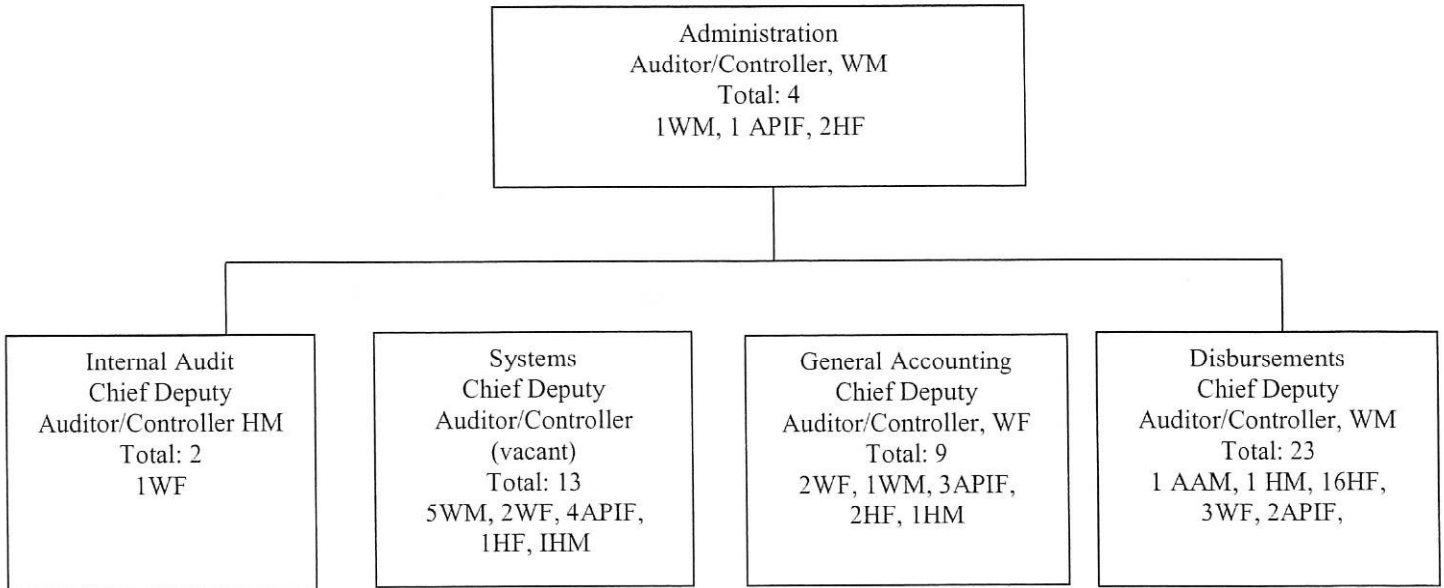
M – Male F – Female

AA - African American; H – Hispanic; API – Asian/Pacific Islander; W - White other than Hispanic;
AI – American Indian/Alaskan Native

Data as of 12/31/17

Section 2

Organizational Profile Auditor-Controller

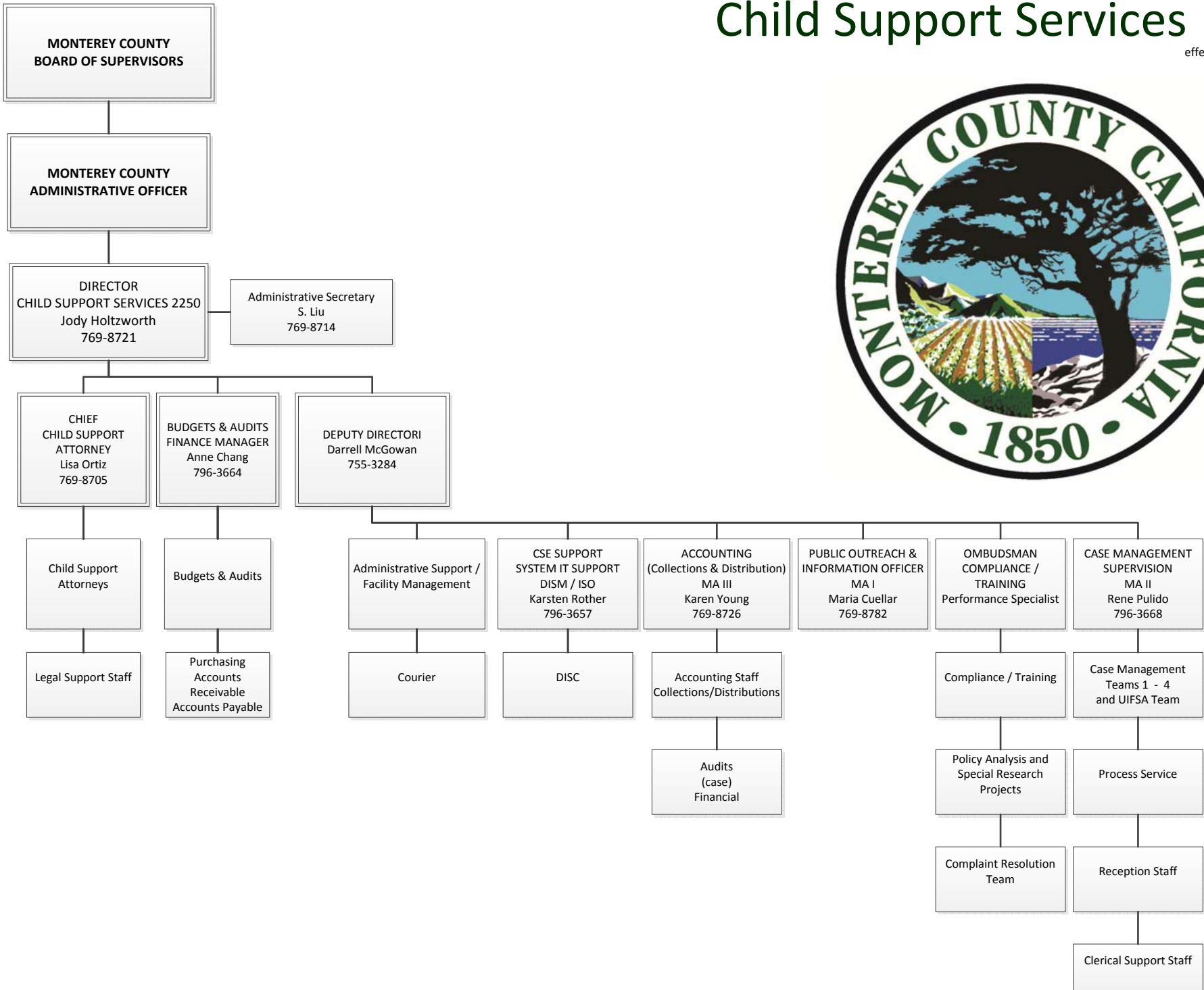


M – Male F – Female

AA - African American; H – Hispanic; API – Asian/Pacific Islander; W - White other than Hispanic; AI – American Indian/Alaskan Native

Child Support Services 2250

effective March 21, 2017



District Attorney

District Attorney, WM

Total = 4
2 - WM
2 - WF

Chief Asst DA,
WM

Total = 10
3 WM
1 APIF
4 WF
2 HF

Finance
Mngr - WM

Total = 3
1 HF
1 WF
1 WM

Asst DA #1, WF

Total = 12
2 WM
7 WF
1 HF
1 HM
1 AAF

Retired-

Total: 6

2- WM
2 WF
1- HM
1-API

Mngr DA #1, WM

Total = 8

4 WF
4 WM

Clerical

Supv - 2 HF

Total = 26

2 HM
6 WF
16 HF
2 APIF

Victims
Mngr - WF

Total = 11
9 HF
1 APIF
1 AAF

Asst DA #2- WF

Total = 17

7 WM
7 WF
3 HF

Asst DA #3- WM

Total = 10

5 WF
3 WM
1 APIF
1 AIM

Investigators

Chief, WM

Total = 34

13 WM
8 WF
1 APIM
1 APIF
5 HF
6 HM

Total = 141

Dec. 31, 2017

**ECONOMIC DEVELOPMENT
DEPARTMENT**

**Director of Economic Development
W/M**

**Senior Secretary
H/F**

HOUSING

**Housing Program Manager
(Vacant)**

**Redevelopment & Housing
Project Analyst II
W/M**

**Redevelopment & Housing
Project Analyst I
H/F**

**Administrative Services
Assistant
W/F**

ECONOMIC DEVELOPMENT

**Management Analyst III
W/F**

**Redevelopment & Housing
Project Analyst II
H/M**

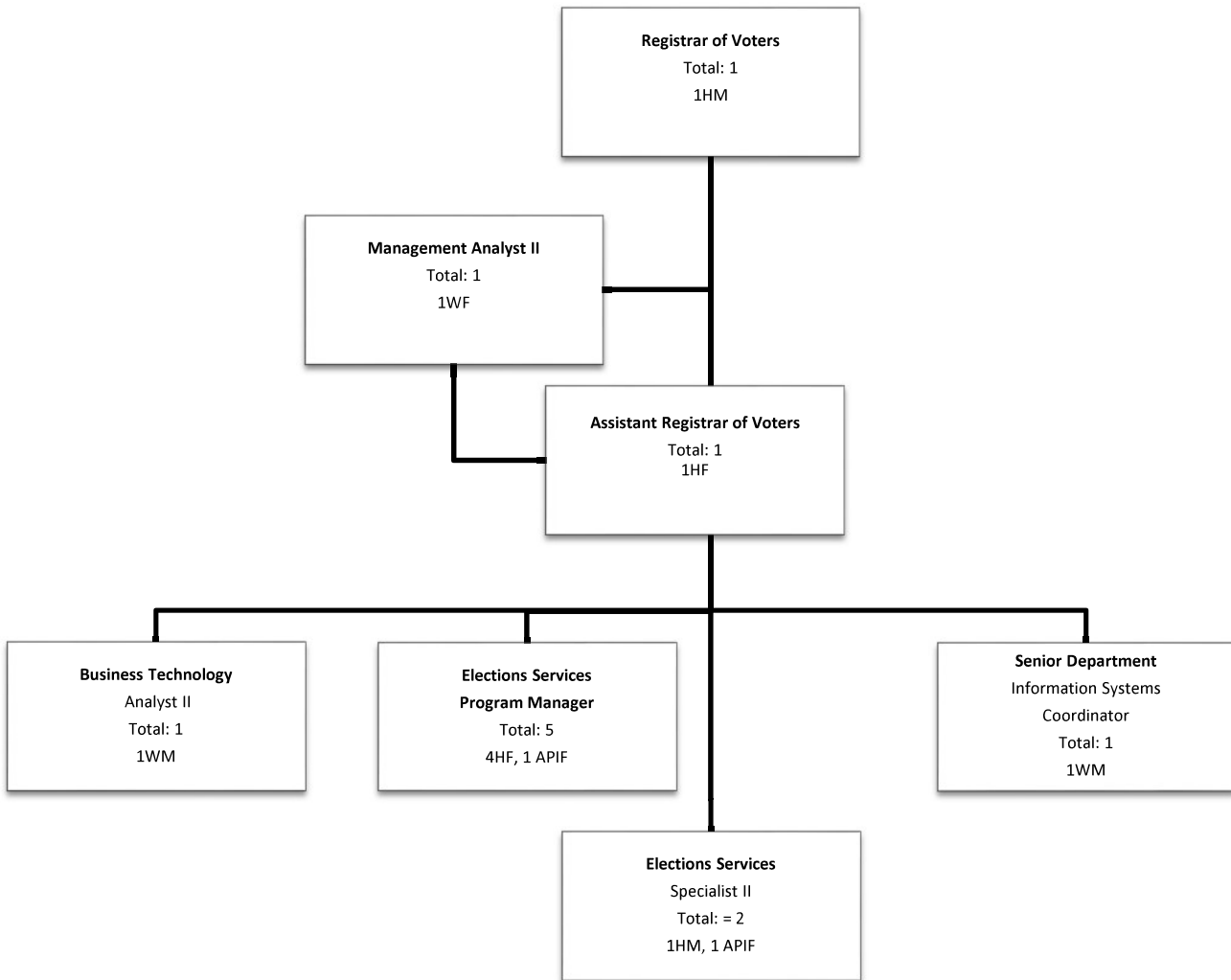
FINANCIAL SUPPORT

**Management Analyst II
A/F**

January 25, 2018

Section 2

Organizational Profile (Elections Department)



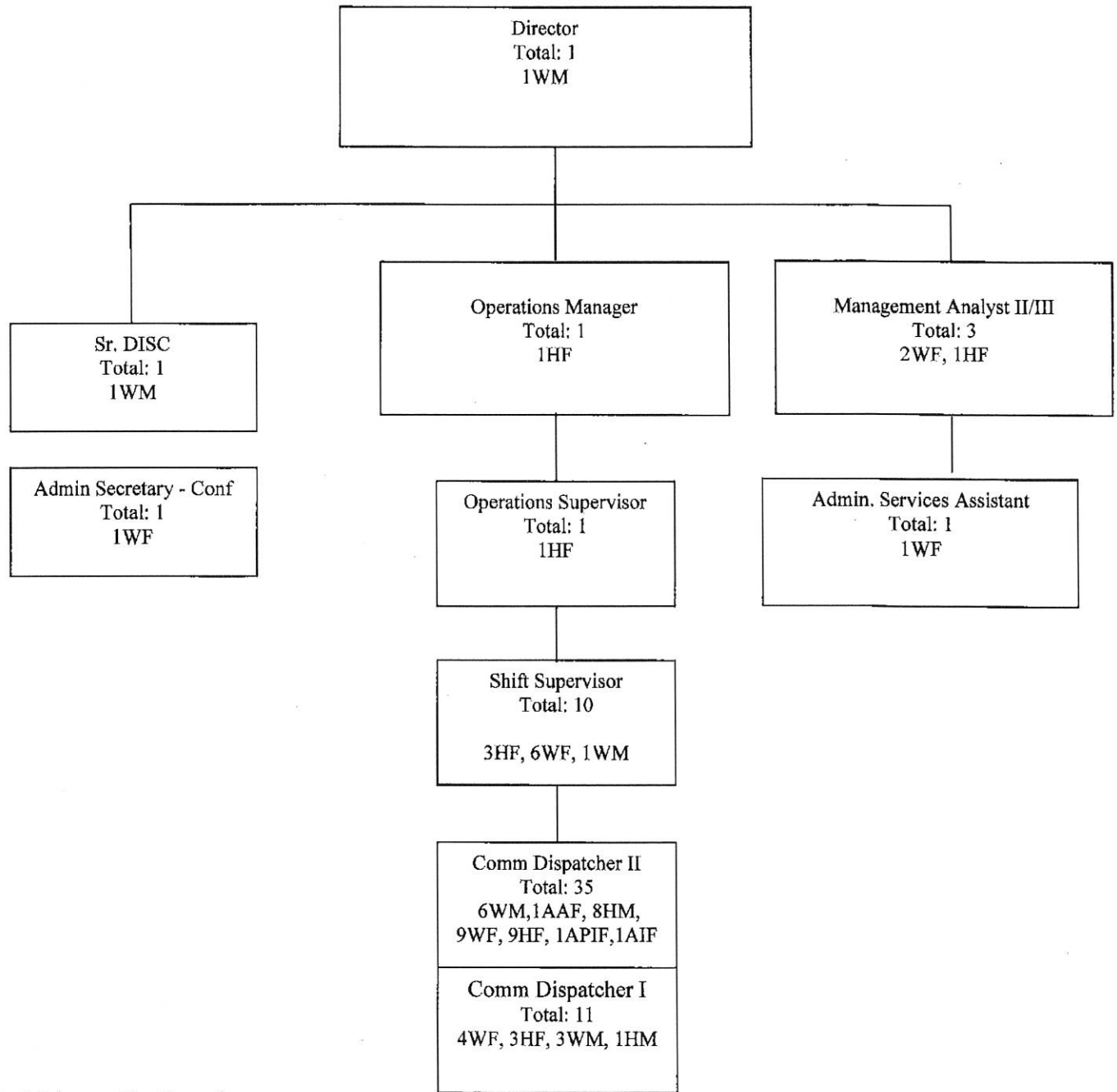
M – Male F – Female

AA - African American; H – Hispanic; API – Asian/Pacific Islander; W - White other than Hispanic;

AI – American Indian/Alaskan Native

Section 2

Organizational Profile (Emergency Communications Center)



M – Male F – Female

AA - African American; H – Hispanic; API – Asian/Pacific Islander; W - White other than Hispanic; AI – American Indian/Alaskan Native



Department of Health Organizational Chart

Assistant CAO
Manny Gonzalez

DIRECTOR OF HEALTH
Elsa Jimenez 755-4525 or 755-4526

COMMUNITY HEALTH CENTER BOARD

Planning, Evaluation, and Policy
Krisa Hann 755-4586
Public Health Program Manager II

Health Equity and Community Planning
Health Equity Coordination
Community Engagement
Med-Cel Outreach and Enrollment
Data and Epidemiology Analytics
Accreditation, Evaluation & Grant Writing

Communications

Public Information Officer
Kiren Smith

PEP - Total 6
1A1PM, 4HF, 1 (OF)

Administration Bureau
Ezequiel Vega Health Bureau Chief

Finance
Accounts Payable & Receivable
Budget Coordination & Oversight
Central Purchasing
Financial Compliance – Guidance & Oversight
General Accounting
Financial Reports
Capital Projects
Facilities Management
Information Technology
Automated Information Systems
PC Technical Support
Procurement & Accounting

ADMIN - Total 19
9HF, 3HM, 3WM, 3MF, 1 (OF)

IT - Total 10
1A1PF, 1A1PM, 1HF, 3HM, 1MF, 3WM

Behavioral Health Bureau
Bhanu Prakash Director
Bureau Chief

Mental Health
Adoption Prevention
Case Management
Community Housing
Crisis Services
Criminal Justice Services
Day Treatment
Dual Diagnosis Programs
Inpatient
Outpatient
Early Intervention Services
Family Preservation & Reunification
Homeless Services
Institutions of Mental Disease
Intensive Home Based Services
Mental Health Court
Outpatient Management
Parenting Education
Peer Counseling
Prevention
School-Based Counseling

Side Hospital
Supportive Employment
Support Groups
Supportive Housing
Wellness Center
Workforce Education & Training

Alcohol & Drug
Drug Offender
Drug Court
Drug Diversion
Narcotic Treatment Programs
Outpatient Services Prevention
Pueblo del Mar – Transitional Housing
Residential
Substance Abuse Treatment
Alcohol and Other Drug Abuse
Mental Illness Prevention

BEHAVIORAL HEALTH - Total 367
21A1PF, 5A1PM, 9AAF, 2AM, 166HF, 40HM, 3AF, 85WF, 25WM

Health Officer/Public Health Bureau
Dr. Edward Moreno 755-4385
Health Officer/Director of Public Health Bureau Chief

Children's Medical Services
California Children's Services
Medical Therapy Unit Child Health & Disability Program
Child Lead Poisoning Prevention
Community Health Regional Centers
Epidemiology and Surveillance
HIV/AIDS Prevention
STD Partner Services
Syringe Exchange

Health Promotion Services
Employee Wellness Program
Safe Routes to School
Teen Pregnancy and STD Prevention
Tobacco Control and Cessation
Violence and Injury Prevention
Maternal and Child Health
Contraceptive Personal Health
Sudden Infant Death Syndrome Program
Nutrition Education and Obesity Prevention
Special Supplemental Food Program for Women, Infants, and Children
Public Health Emergency Preparedness
Hospital Preparedness
Public Health Laboratory
Clinical Testing
Environmental Testing
Vital Records
Birth and Death Certificates
Medical Marijuana Cards

PUBLIC HEALTH - Total 147
14A1PF, 2A1PM, 8AAF, 73HF, 8HM, 35WFM, 7WM

Clinic Services Bureau
Julie Edgcomb 79633700 – (Sr. Clinic Site) Director
Bureau Chief

Clinic Administration, Fiscal & IS Mgmt.
Federally Qualified Health Center Look-Alike (FQHC-LA) Administration Budget, Billing Contracts and Credentialing
Accounts Payable/Accounts Receivable Info Systems Management & Reporting Quality Improvement

FOHC-LA Clinics
Aisal Health Center
Laurel Internal Medicine
Laurel Pediatric Clinic
Monterey County Clinic at Marina Monterey
County Integrated Care Seaside Family Health Center
Beneater Public Health Clinics
Immunizations for Children and Adults
Latent TB Infection
Sexually Transmitted Infection

CLINIC SERVICES - Total 271
13A1PF, 3A1PM, 4AAF, 204HF, 18HM, 1A1F, 1(OM), 23WF, 4VM

Emergency Medical Services Agency
Michael Petrie – 755-4964
EMS Director
Bureau Chief

Quality Assurance & Data Collection
Area Collection and Analysis
Health Care Process
Mainland County-Wide Quality Assurance Program
Public Information & Education

EMS Systems Administration
Advisory Committees
Local EMS Agency/Local EMS Plan
Maddy Funding ** EMS Fund
Medical Control
Certification & Training Standards
Approval & Monitoring of Training

EMS Communications
Early Dispatch
Emergency Medical Technician
First Responder
Paramedics Accreditation
Mobile Intensive Care Nurse Authorization

EMS Medical Services
Disaster Planning
Regional Medical Disaster Planning
Special Event Coordination/Liaison
Specialty Care Center Designation
Paramedic Base/Receiving Hospitals
Tracking of Hospital Ambulance Diversion

EMERGENCY MEDICAL SERVICES
Total 9
1AA4F, 1HF, 2WF, 3WM

Environmental Health Bureau
John Ramirez – 755-4539
Director of Environmental Health Bureau Chief

Refuse Collection Franchise
Administration
Recycling
Solid Waste Management
Body Art Facility & Operator Inspection
Illegal Dumping Enforcement
Liquid Waste Hauler Inspection
Medical Waste Generator
Solid Waste Facility Inspection
Waste Inspection
Environmental Health Review

Animal Services
Dog Inspection
Complaint Investigation
Community Education
Nuisance/Dangerous
Shelter Program
Adoption
Animal Behavior Education & Community Classes
Licensing
Owner Returns
Quarantine Services
Stray Animal Sheltering
Sewer/Neutraler Clinic

Drinking Water Source Assessment
Local Small, LPA, Small and State
Water Sampling & Inspection
Well Water Construction, Repair & Destruction Inspection
Hazardous Materials Management
Aboveground Petroleum Storage Tank Inspection
Accidental Releases Prevention
Emergency Response
Hazardous Waste Generator
Monitoring Wells/Soil Borings
Outreach & Education
Pesticide Exposure
Site Mitigation
Underground and Above Storage Tanks
Remediation
Risk & Resource Research

Accounts Payable/Accounts Receivable
Contracts/PSAs
Invoicing - Monthly, Yearly
Purchasing, Equipment & Supplies
Revenue Vehicle Fleet Maintenance
Consumer Health Protection Services
Agricultural Field Toilet Inspection
Childhood Lead Poisoning Prevention
Employee Housing Inspection
Foodborne illness investigation
General Sanitation
Institutions & Detention Facilities Inspection
Public Swimming Pools/Spas Inspections
Recreational/Beach Water Quality Notification
Retail Food Facility Inspection
Storm Water Pollution Control
Vector Control
Drinking Water Protection Services
Cross Connection Control
Castrolville Sewerwater Infiltration Project Sampling
Collaborative Aquifer Protection
Desalination Treatment Facility Inspection

ADMINISTRATION/FISCAL
Accounts Payable & Receivable
Budget Coordination & Oversight
Central Purchasing
Financial Compliance – Guidance & Oversight
General Accounting
Financial Reports
Capital Projects
Facilities Management
Information Technology
Automated Information Systems
PC Technical Support
Procurement & Accounting

ADMIN - Total 19
9HF, 3HM, 3WM, 3MF, 1 (OF)

IT - Total 10
1A1PF, 1A1PM, 1HF, 3HM, 1MF, 3WM

Human Resources
Cindy Giranc-Berry-755-4547
HR Manager

American with Disabilities Act
Benefits Administration
Classification & Organizational Development
Compliance
DFE/EEOC
Employee Orientation
Employee Relations
Ergonomics
Labor Management of Labor
Understanding
Onboarding/Offboarding
Payroll Processing
Performance Evaluations
Personnel Action Forms
Recruitment/Job Posts
Management
Safety Coordination
Training & Development
Worker's Compensation Files
Worker's Compensation Coordinator

HR - Total 9
2A1PF, 1HF, 3HM, 2WF, 1WM

Public Administrator/ Public Guardian
Elsa Jimenez
Public Administrator

Conservatorships
Decedent estate
Investigation
Information and Referral
Investigation
LPS Conservatorships
Probate Administrator
Public Representative
Powers
PUBLIC GUARDIAN - Total 9
1A1PM, 1HF, 4WF, 3WM

SART Program
Sherree Goldman,
Nurse Practitioner II
SART - Total 3
3WF

1/20/17

**INFORMATION TECHNOLOGY
ADMINISTRATION**

Director, WM
Total: 3
2HF, 1WM

INFRASTRUCTURE
Network, Telephone, Radio

Division Manager, APIM
Total: 22
3APIM, 2AAM, 1HF, 4HM, 12WM

BUSINESS OFFICE
**Fiscal, Contracts, Project
Management**

Division Manager, Vacant
Total: 12
1API, 1APIF, 4HF, 2HM, 4WF

SERVICE DELIVERY
**Desktop Services, Service Desk,
Data Center, Warehouse**

Division Manager, WM
Total: 36
1 APIF, 6APIM, 1AAM, 1HF, 5HM,
1AIM, 3WF, 18WM

APPLICATIONS
Applications Development & Support

Division Manager, APIM
Total:20
2APIF, 3APIM, 2AAM, 6HM, 2WF,
5WM

SECURITY
Threat Hunting & Investigations

Chief Security & Privacy Officer, WM
Total: 3
1HM, 1WF, 1WM

Section 2

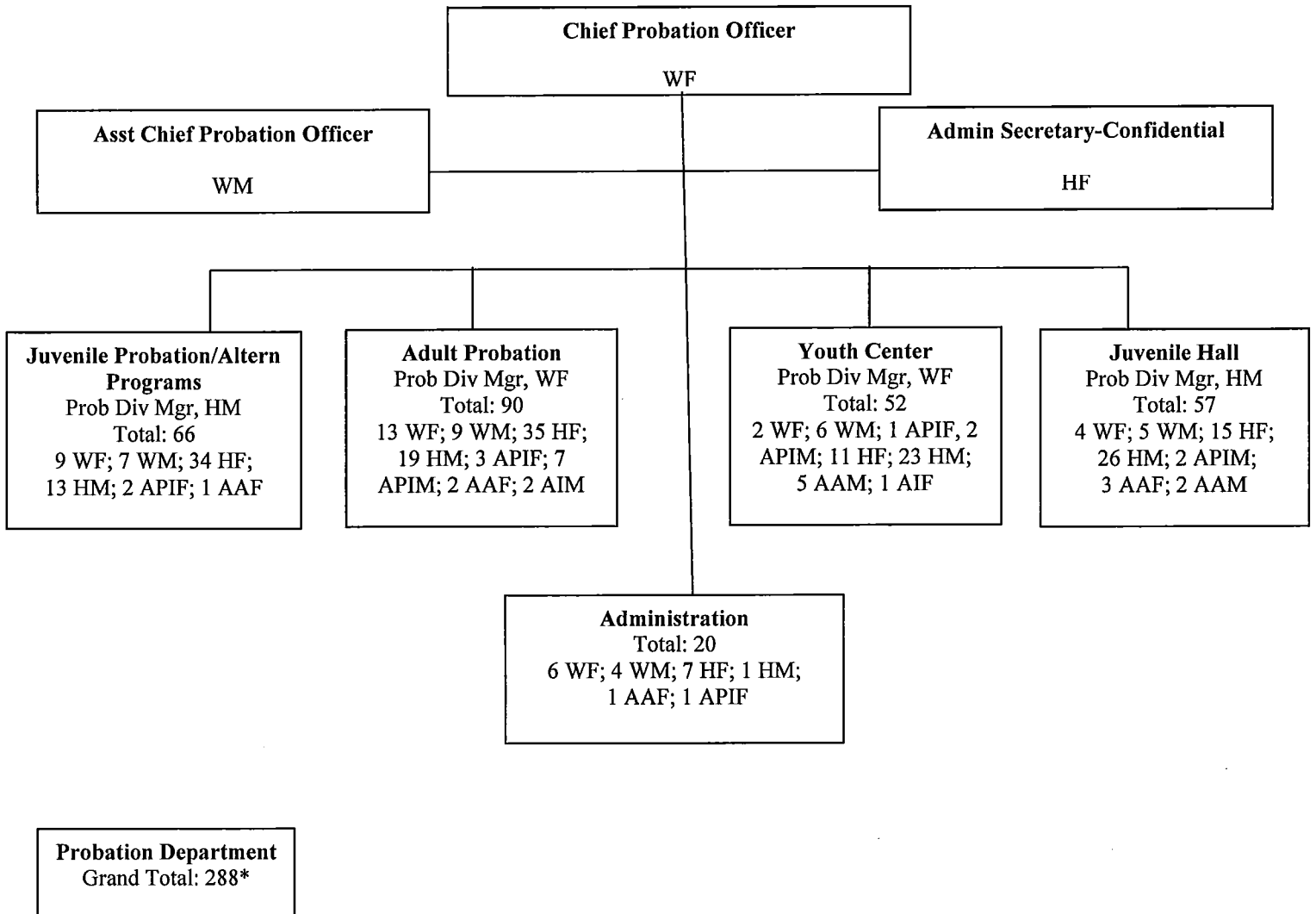
Organizational Profile Natividad Medical Center

NMC CEO
1WM
ADMINISTRATION SUPPORT
TOTAL 3
3HF

CHIEF NURSING OFFICER	CHIEF MEDICAL OFFICER	CHIEF FINANCIAL OFFICER	CHIEF INFORMATION OFFICER	ASSISTANT ADMINISTRATOR- OPERATIONS & SUPPORT	ASSISTANT ADMINISTRATOR- COMMUNITY & ORG. RELATIONS	HUMAN RESOURCES ADMINISTRATOR
1WF	1WM	1AM	1WM	1WF	1WF	1AAF
INTENSIVE CARE UNIT TOTAL 41 11AF, 3AM, 2AAF, 1AAM 10HF, 1HM, 12WF, 1WM	PHYSICIANS TOTAL 36 3HF, 1AF, 10WF, 6AM, 3HM, 11WM, 1UM, 1AAM	PURCHASING & MATERIALS MANAGEMENT TOTAL 16 1AF, 1AM, 1AAM, 4HF, 5HM, 1UF, 2WF, 1WM	INFORMATION TECHNOLOGY TOTAL 18 1AAM, 3HF, 4HM, 1AIM, 2WF, 7WM	DIETARY & CLINICAL NUTRITION TOTAL 38 7AF, 4AM, 1AAF, 18HF, 5HM, 3WF		HUMAN RESOURCES TOTAL 11 1AAF, 1AM, 4HF, 5WF
NEONATAL INTENSIVE CARE UNIT TOTAL 24 8AF, 5HF, 11WF	FAMILY PRACTICE RESIDENCY TOTAL 35 4AF, 4AM, 2AAF, 4HF, 2HM, 3UF, 1UM, 11WF, 4WM	GENERAL ACCOUNTING TOTAL 6 1AF, 1HF, 2HM, 2WF	HEALTH INFORMATION MANAGEMENT TOTAL 22 3AAF, 1AAM, 12HF, 1HM, 1AIF, 4WF	ENVIRONMENTAL SERVICES TOTAL 63 4AF, 3AM, 1AAF, 2AAM, 30HF, 20HM, 1WF, 2WM		EMPLOYEE HEALTH TOTAL 2 1AF, 1HM
MEDICAL SURGICAL UNIT TOTAL 78 32AF, 4AM, 2AAM, 1AAF, 18HF, 5HM, 12WF, 4WM	PHARMACY TOTAL 25 5AF, 3AM, 2AAF, 8HF, 2HM, 3WF, 2WM	PATIENT ACCOUNTING TOTAL 23 18HF, 4WF, 1WM		ENGINEERING & SAFETY TOTAL 17 1AF, 1HF, 6HM, 1AIF, 7WM, 1WF		RECORDS & RETENTION TOTAL 3 1AAF, 2HF
PEDIATRIC UNIT TOTAL 13 2AF, 2HF, 9WF	NATIVIDAD MEDICAL GROUP TOTAL 7 6HF, 1WF	PHYSICIAN BILLING TOTAL 3 3HF		LABORATORY TOTAL 42 14AF, 2AM, 1AAF, 1AAM, 9HF, 4HM, 2AIF, 8WF, 1WM		HOSPITAL EDUCATION TOTAL 1 1HF
MENTAL HEALTH UNIT TOTAL 31 1AF, 2AAF, 1AAF, 1AAM, 10HF, 3HM, 9WF, 4WM	NIDO CLINIC TOTAL 5 4HF, 1HM	ADMITTING & REGISTRATION TOTAL 35 28HF, 4HM, 3WF		RADIOLOGY TOTAL 42 1AF, 2AM, 12HF, 5HM, 15WF, 7WM		CENTRAL TRANSPORTATION TOTAL 8 1AM, 2HF, 3HM, 1WM, 1WF
MATERNAL INFANT & LACTATION/NINOS CLINICS TOTAL 41 14AF, 20HF, 7WF	SPECIALTY CLINIC TOTAL 22 3AF, 14HF, 2HM, 1WF, 1WM, 1AAM	MANAGED CARE/FINANCIAL COUNSELING TOTAL 10 6HF, 1 HM, 3WF		ULTRASOUND TOTAL 10 5WF, 1HF, 1AM, 1HM, 1WM, 1UM		STAFFING RESOURCES TOTAL 3 1HF, 1HM, 1WF
ACUTE REHABILITATION UNIT TOTAL 49 14AF, 3AM, 16HF, 3IF, 6HM, 7WF	INTERPRETER SERVICES TOTAL 4 2HF, 2HM	DECISION SUPPORT TOTAL 2 1HF, 1HM		COMMUNICATIONS TOTAL 8 6HF, 2HM		
EMERGENCY DEPARTMENT TOTAL 62 7AF, 6AM, 2AAF, 1AAM, 18HF, 7HM, 18WF, 3WM	MEDICAL STAFF OFFICE / LIBRARY TOTAL 11 1AF, 3HF, 1HM, 6WF			THERAPY SERVICES TOTAL 18 1AM, 4HF, 1HM, 8WF, 3WM, 1UM		
LABOR & DELIVERY / ANTENATAL TOTAL 60 9AF, 2AAF, 29HF, 20WF	DIABETIC CLINIC TOTAL 2 2HF					
SURGERY & RECOVERY TOTAL 21 7AF, 1AAF, 1AAM, 2HF, 2HM, 4WF, 4WM	QUALITY MANAGEMENT TOTAL 9 1AF, 1HF, 1HM, 6WF					

Section 2

Organizational Profile Probation Department



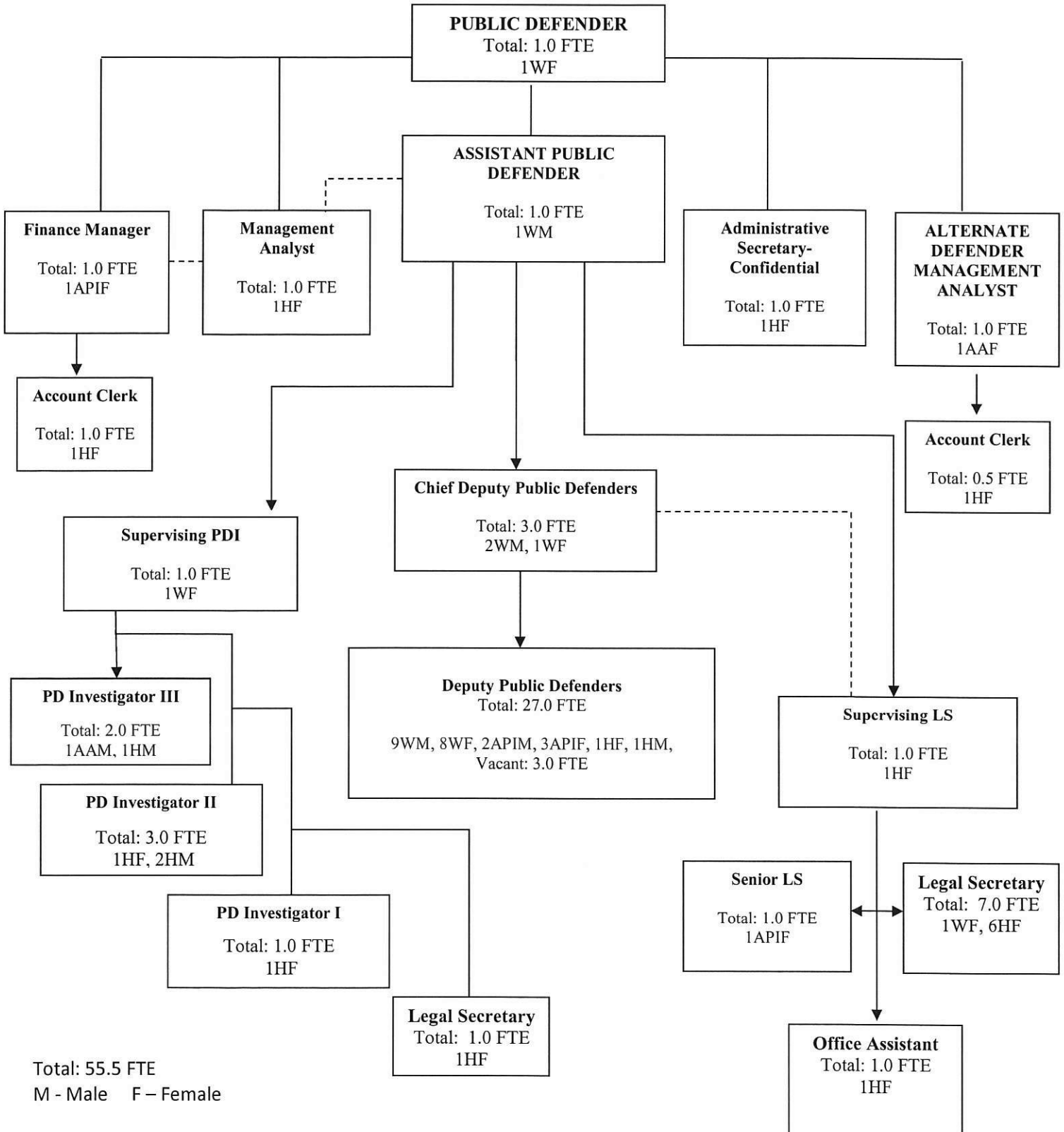
*Total includes all employee separations listed on Section 4 - Personnel Activity

M – Male F – Female

AA - African American; H – Hispanic; API – Asian/Pacific Islander; W - White other than Hispanic; AI – American Indian/Alaskan Native

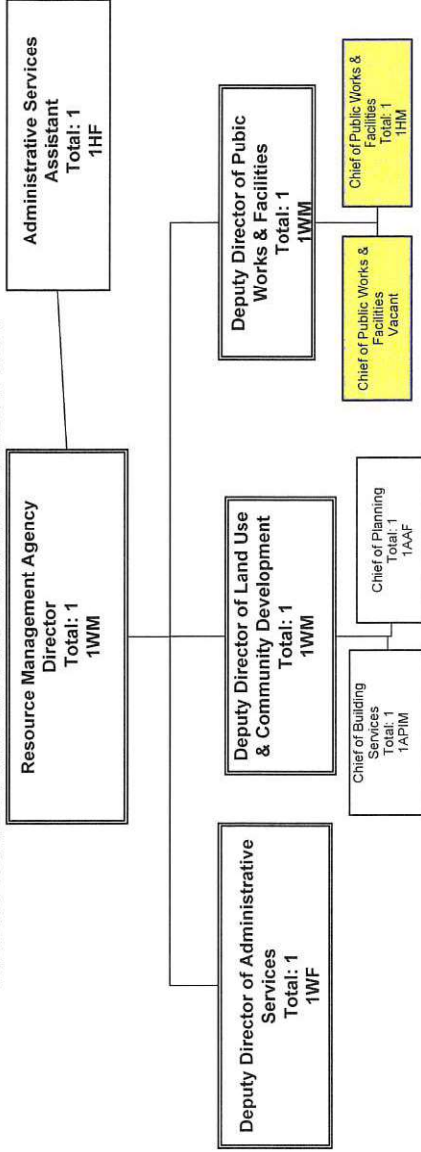
Section 2

Organizational Profile Public Defender



AA- African American; H- Hispanic; API- Asian/Pacific Islander;
W- White Other Than Hispanic; AI- American Indian/Alaskan Native

RESOURCE MANAGEMENT AGENCY



12-23-2017

RESOURCE MANAGEMENT AGENCY

Land Use & Community Development Division

Development Services/Surveys

~~Deputy Director Land~~

Use & Community Development
Total: 1
1WMM

Chief of Surveys
Total: 1
1WMM

Surveys - Crew 331
Assistant Engineer
Total: 1
1HM

Engineering Technician
Total: 1
1HM

GIS Analyst I
Total: 1
1WMM

Student Intern
Total: 1
1WF

Development Services - Crew 550

Civil Engineer
Underfill RMA Srvs Mgr
Total: 1
1AM

Encroachments
Assistant Engineer
Vacant
819641A100001

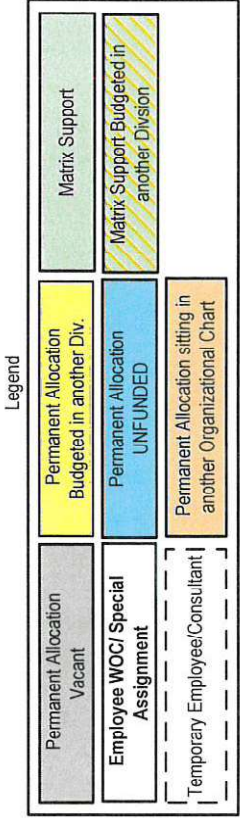
Engineering Technician
Total: 3
2HM
1AM

Engineering Aide III
Total: 1
1HF

Special Projects - Crew 325

Civil Engineer
Total: 1
1WMM

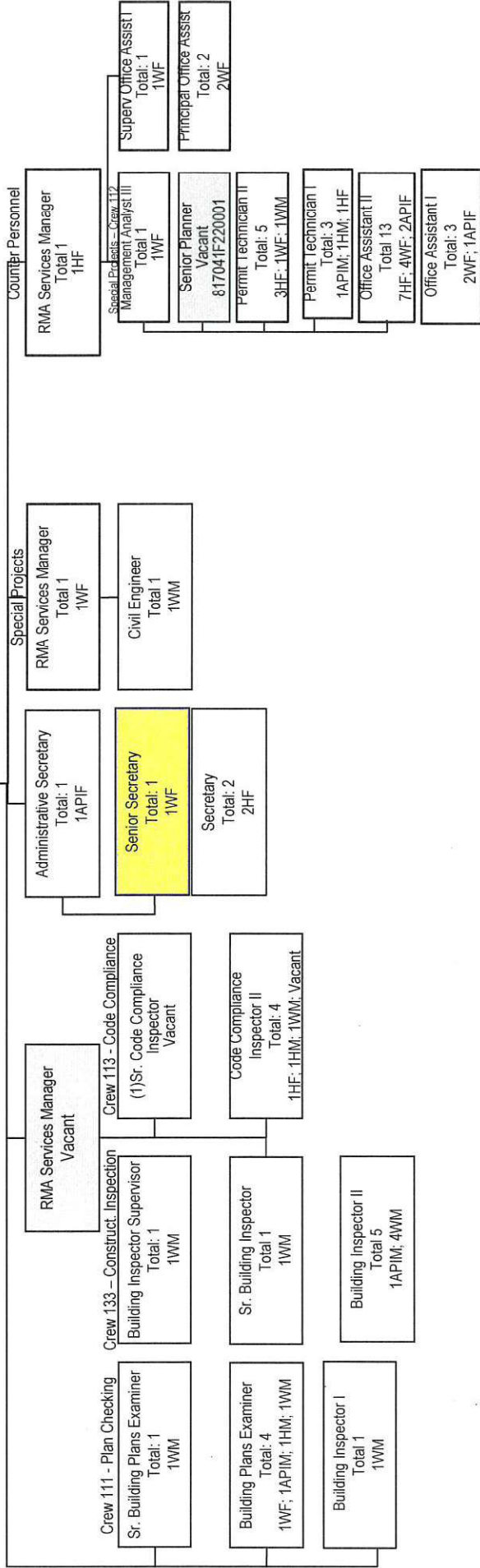
11/06/2017



RESOURCE MANAGEMENT AGENCY
Land Use & Community Development Division
Building Services

Deputy Director of Land Use & Community
 Development Division
 Total: 1
 1WM

Chief of Building Services
 Total: 1
 1APIM



Permit Technician III
 817043C120001
 See Admin Services

Office Assistant I
 8170TEMP
 See Admin Services

12/18/2017

RESOURCE MANAGEMENT AGENCY

Land Use & Community Development Division

Environmental Services

~~Deputy Director Land~~
Use & Community Development
 Total: 1
 1WMM

Senior Water Resources Hydrologist
 Total: 1
 1WMM

Crew 575

Civil Engineer
 Total: 1
 1WMM

Water Resources Hydrologist
 Total: 1
 1WMM

Student Intern
 Total: 2
 1HF
 1WF

Development Review
 Water Resources Technician
 Total: 4
 1HF
 1HM
 1WF
 1Vacant

RMA Services Manager
 Total: 1
 1WF

Management Analyst I
 Total: 1
 1WF

Legend

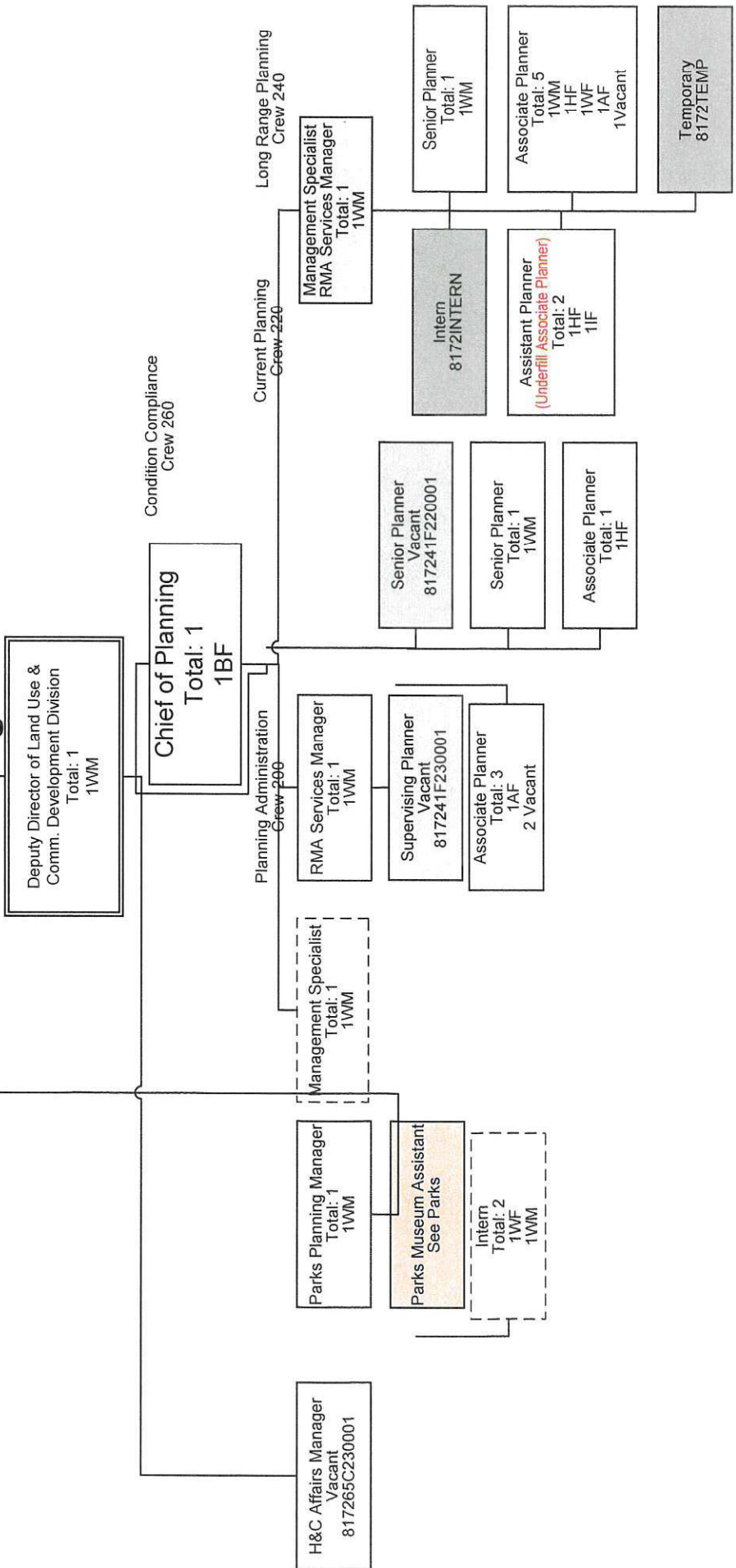
Permanent Allocation Vacant	Permanent Allocation Budgeted in another Div.	Matrix Support
Employee WOC/ Special Assignment	Permanent Allocation UNFUNDED	Matrix Support Budgeted in another Division
Temporary Employee/Consultant	Permanent Allocation sitting in another Organizational Chart	

11/20/17

RESOURCE MANAGEMENT AGENCY

Land Use & Community Development Division

Planning



St. Secretary
817280A320001
See Building Services

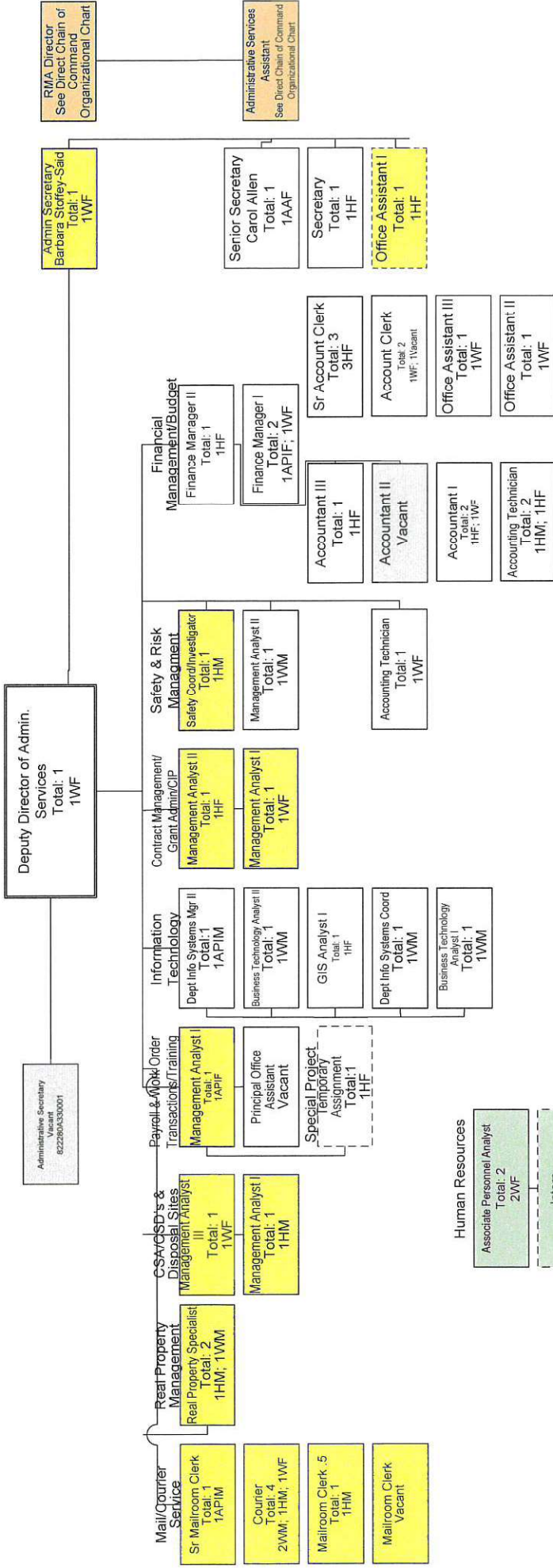
Management Analyst III
817214C310001
See Environmental Services

11/22/2017

Legend

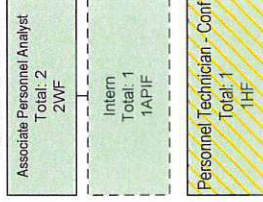
Permanent Allocation Vacant	Permanent Allocation Budgeted in another Div.	Matrix Support
Employee WOCI Special Assignment	Permanent Allocation UNFUNDED	Matrix Support Budgeted in another Division
Temporary Employee/Consultant	Permanent Allocation sitting in another Organizational Chart	

RESOURCE MANAGEMENT AGENCY Administrative Services

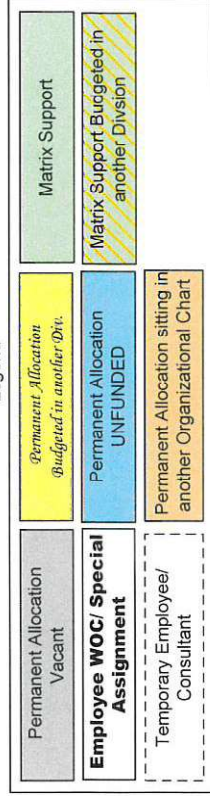


12/23/2017

Human Resources



Legend



PARK OPERATIONS

Deputy Director of Public Works & Facilities
Total: 1
1WM

Acting Chief of Parks
Total: 1
1HM

Admin Operations Manager
Total: 1
1WF

Crew 910

Parks Bld&Grd Wrk Super
Total 1
1HM

Park B&G Worker II
Total: 4
3HM; 1WM

Park Services Aide I
Total: 3
1HF; 1WF; 1HM

Crew 920

Senior Parks U&W Systems Specialist
Total 1
1WM

ParkU&W Systems Specialist
Vacant
84752B400001

ParkU&W Systems Specialist
Vacant
847572B400002

Parks Bld&Grd Wrk Super
Total 1
1HM

WOC Park B&G Worker II
Total: 2
2HM

Park B&G Worker II
Vacant
847572B310003

Park Services Aide II
Total: 2
1WF; 1WM

Crew 200

Parks Museum Assistant
Total 1
1WF

Mechanic II
Total 1
1WM

Park Services Aide III
Total 1
1WM

Park Services Aide III
Total 1
1WM

Park Services Aide I
Total 1
1WF

Temp
Total 1
1WF

County Park Ranger Supervisor
Total: 1
1WM

Range Master
Total 1
1HM

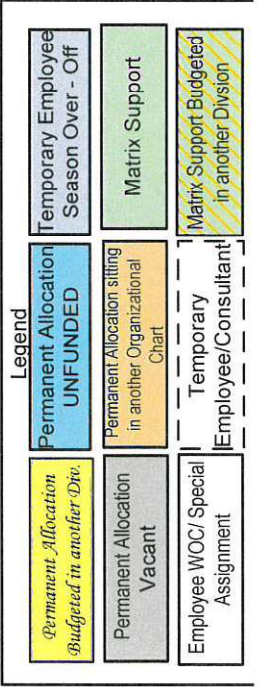
Range Aide
Total 1
1WF

Park Services Aide II
Total 3
3WF

County Park Ranger III
Matt Sweet
847568A430001

County Park Ranger II
Total 4
4WM

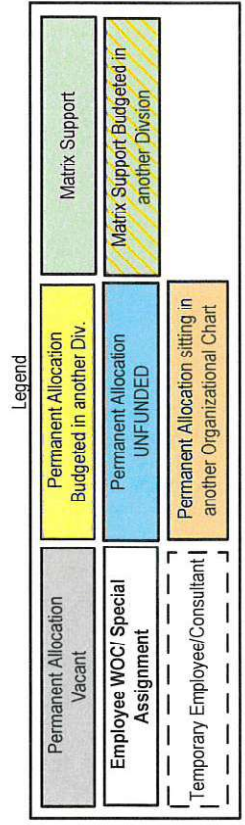
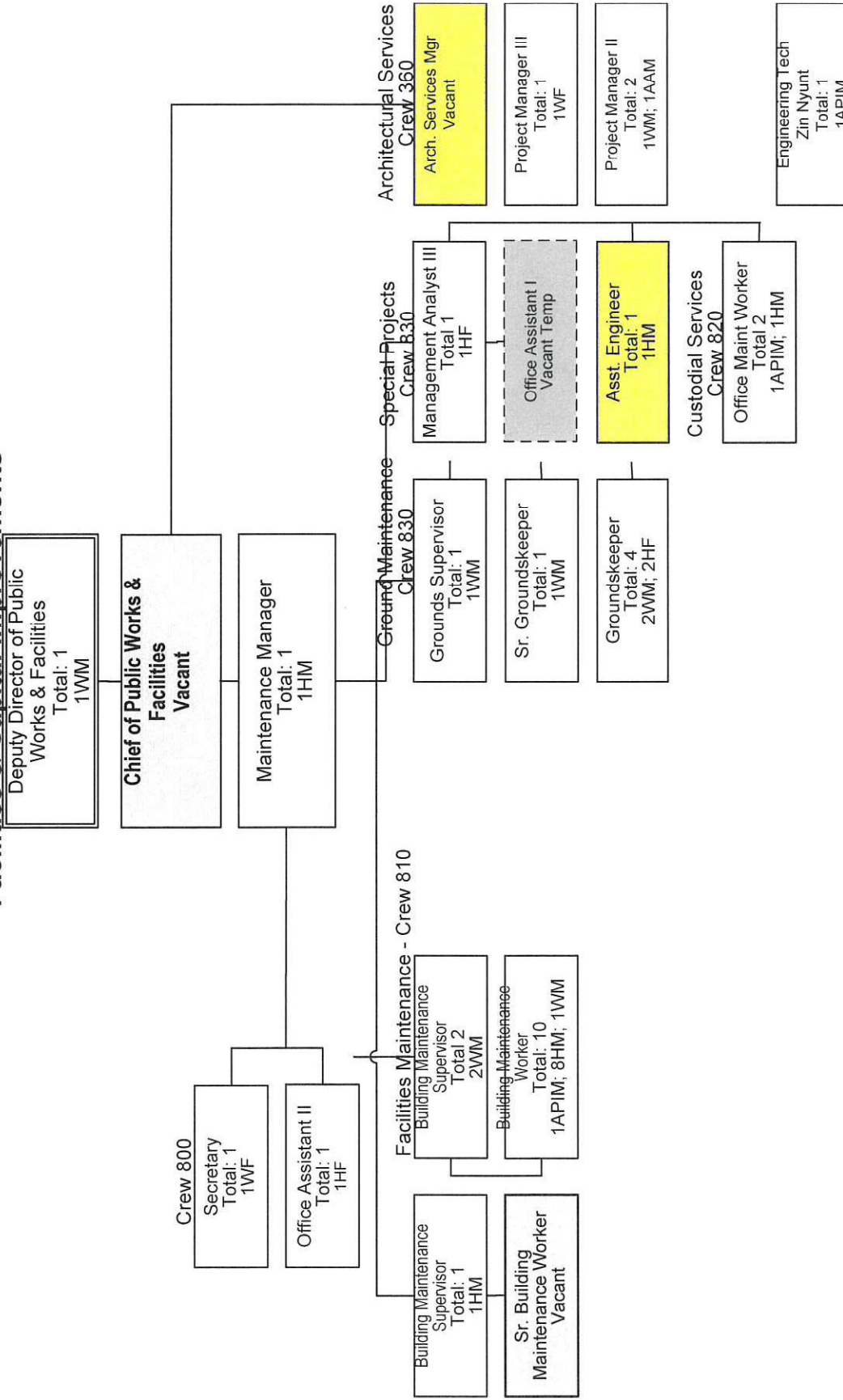
12/15/2017



County Park Ranger Manager
Vacant
847568E010001

County Park Ranger III
Vacant
847568A420002

RESOURCE MANAGEMENT AGENCY Public Works & Facilities Division Facilities & Capital Improvements



12-23-2017

**Public Works, Parks & Facilities Division
Road & Bridge Maintenance Unit**

**Deputy Director of Public Works,
Parks & Facilities**
Total: 1
1WM

Chief of Public Works
Total: 1
1HM

Admin. Services Assistant
Total: 1
1WF

Administrative Secretary
Total: 1
1HF

Secretary
Total: 1
1HF

Office Assistant II
Total: 2
2HF

Prmt Ctr

Road Maint Superintendent
Total: 1
1WM

Management Analyst II
Total: 1
1WF

Assistant Engineer
Underfill Project Mgr I
Total: 1
1HM

Maintenance Manager
Total: 1
1WM

San Miguel Dist - Crew 301
Road Superintendent
Total: 1
1WM

Maintenance Yard Clerk
Total: 1
1HM

Assist Rd Superintendent
Total: 1
1WM

Senior Road Maint. Worker
Total: 2
1HM
1WM

Road Maint. Worker
Total: 6
2WM
3HM
1Vacant

Monterey Rd Dist - Crew 302
Road Superintendent
Total: 1
1HM

Maint Yd & Invent Clerk
Total: 1
1HF

Assist Rd Superintendent
Total: 1
1HM

Senior Road Maint. Worker
Total: 2
2HM

Road Maint. Worker
Senior Road Maint. Worker
Total: 5
4HM
1AM

Road Maint. Helper
Underfill Rd Maint. Wkr
Total: 1
1WM

Greenfield Rd Dist - Crew 303
Assist. Rd Superintendent
Total: 1
1WM

Maintenance Yard Clerk
Total: 1
1WF

Senior Road Maint. Worker
Total: 2
1HM
1WM

Road Maint. Worker
Total: 4
2HM
2WM

San Ardo Rd Dist - Crew 304
Road Superintendent
Total: 1
1WM

Maintenance Yard Clerk
Total: 1
1WF

Assist Rd Superintendent
Total: 1
1WM

Senior Road Maint. Worker
Total: 2
1HM
1WM

Road Maint. Wkr
Total: 3
2WM
1HM

Traffic Maintenance - Crew 305
Traffic Maint. Superintendent
Total: 1
1HM

Traffic Maint Worker
Total: 4
4HM

Bridge Maintenance - Crew 306
Bridge Superintendent
Total: 1
1HM

Maintenance Yard Clerk
Total: 1
1HF

Assist Bridge Superintendent
Vacant
844374E800001

Senior Tree Trimmer
Total: 3
3HM

Sr. Bridge Maint. Worker
Total: 1
1HM

Bridge Maint. Worker
Total: 4
4HM

Crew 525

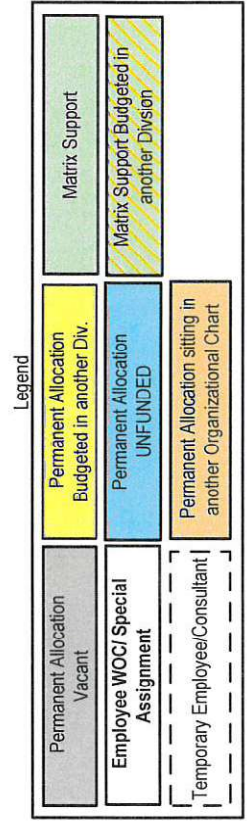
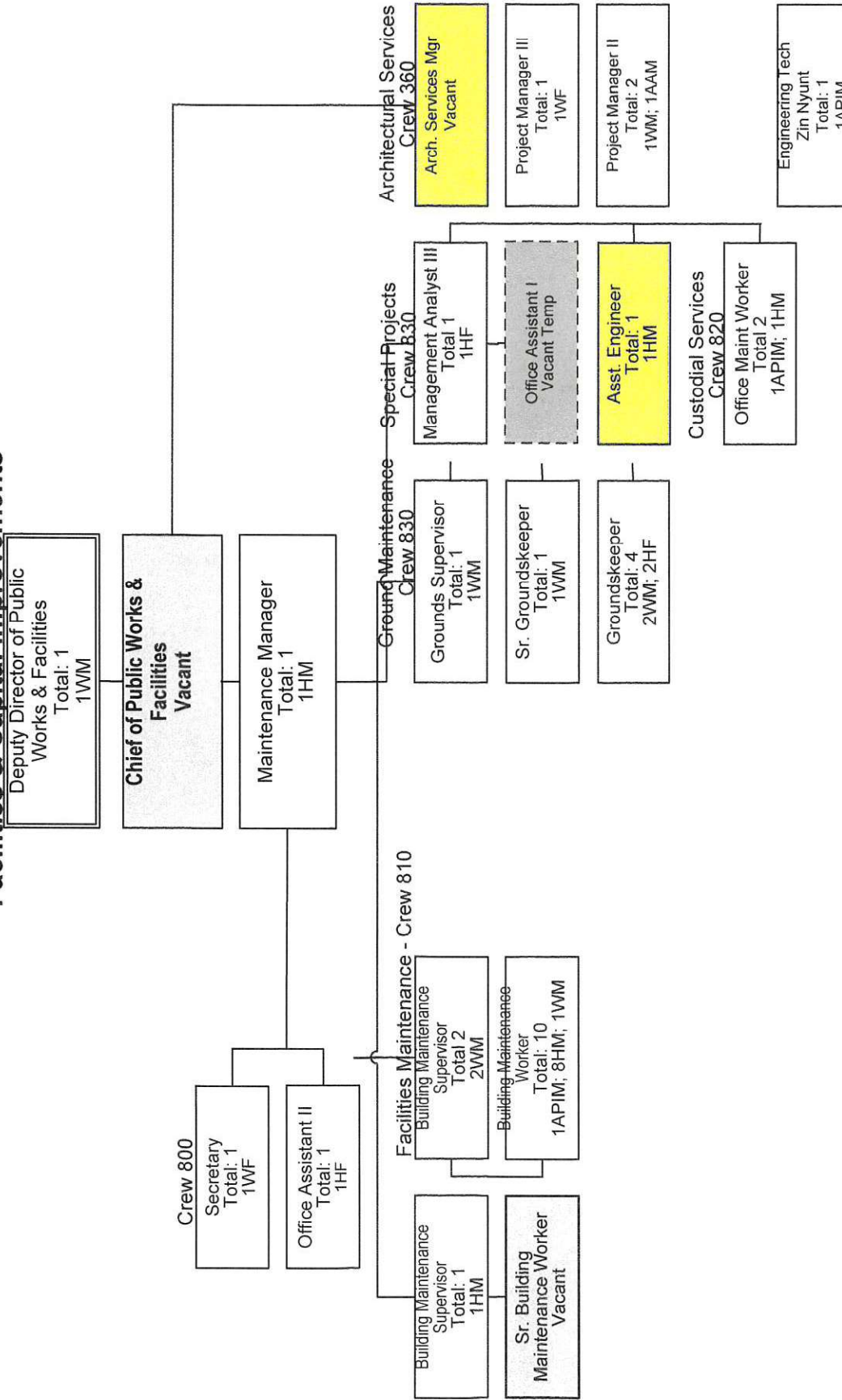
Guard
Total: 2
2HM

Legend

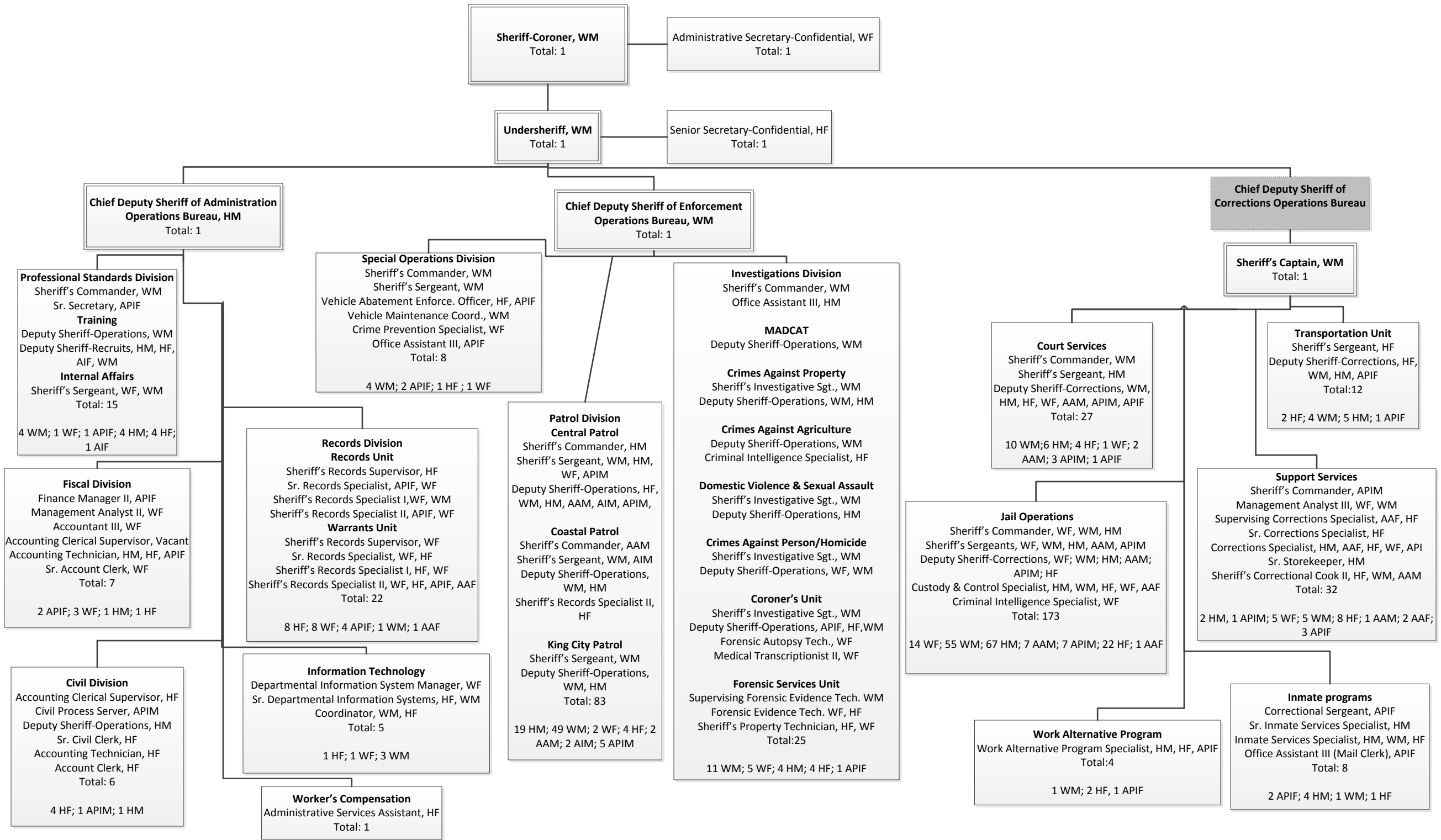
- Matrix Support
- Permanent Allocation Vacant
- Temporary/Employee/Consultant

Updated 03-12-18

RESOURCE MANAGEMENT AGENCY Public Works & Facilities Division Facilities & Capital Improvements

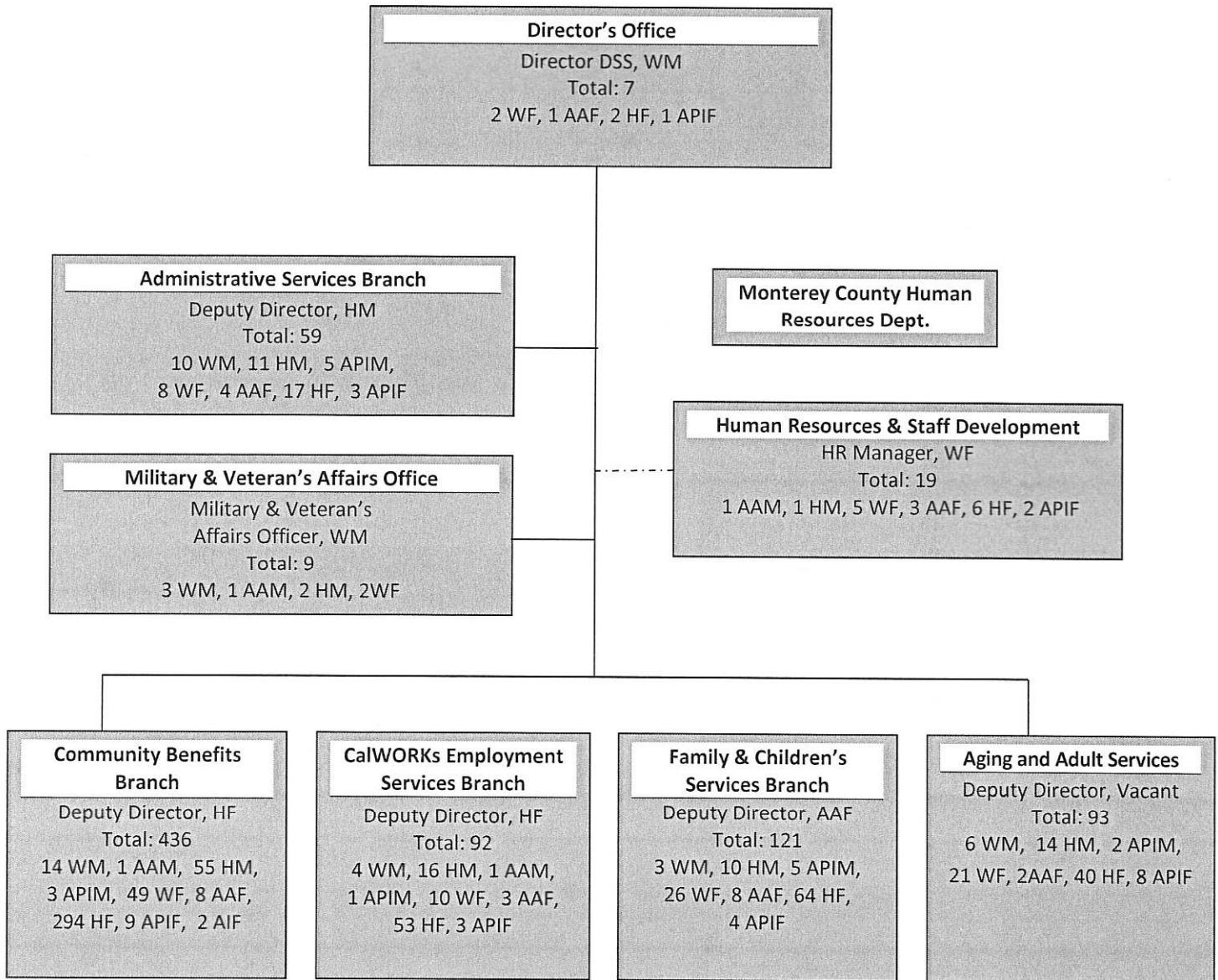


12-23-2017



Section 2

Organizational Profile Department of Social Services

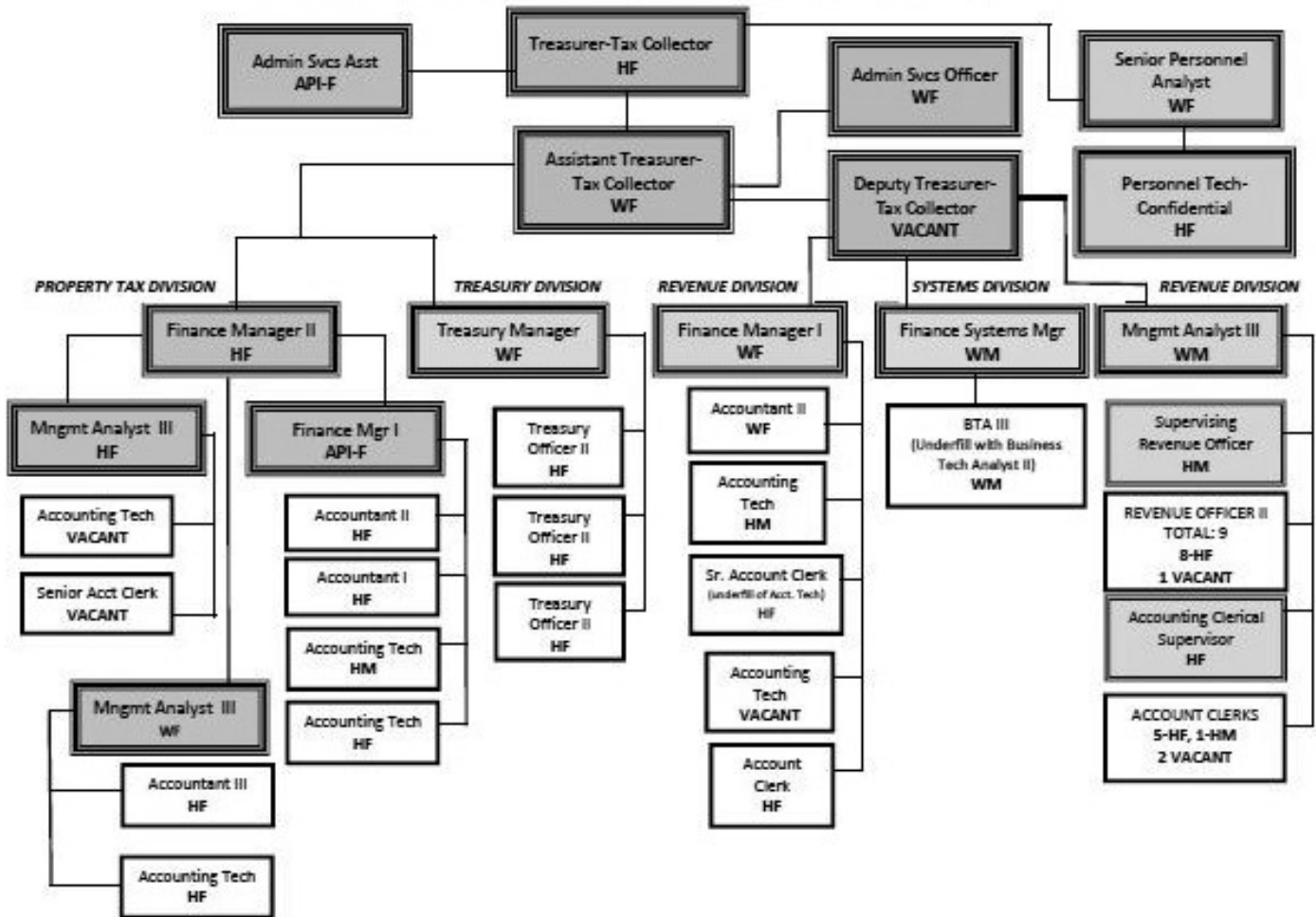


M – Male F – Female

AA - African American; H – Hispanic; API – Asian/Pacific Islander; W – White, Other; AI – American Indian/Alaskan Native

Organizational Profile

TREASURER-TAX COLLECTOR ORGANIZATION CHART (January-December 2017)



M – Male F – Female

AA - African American

W - White other than Hispanic

H – Hispanic

AI – American Indian/Alaskan Native

API – Asian/Pacific Islander