

LAFCO of Monterey County

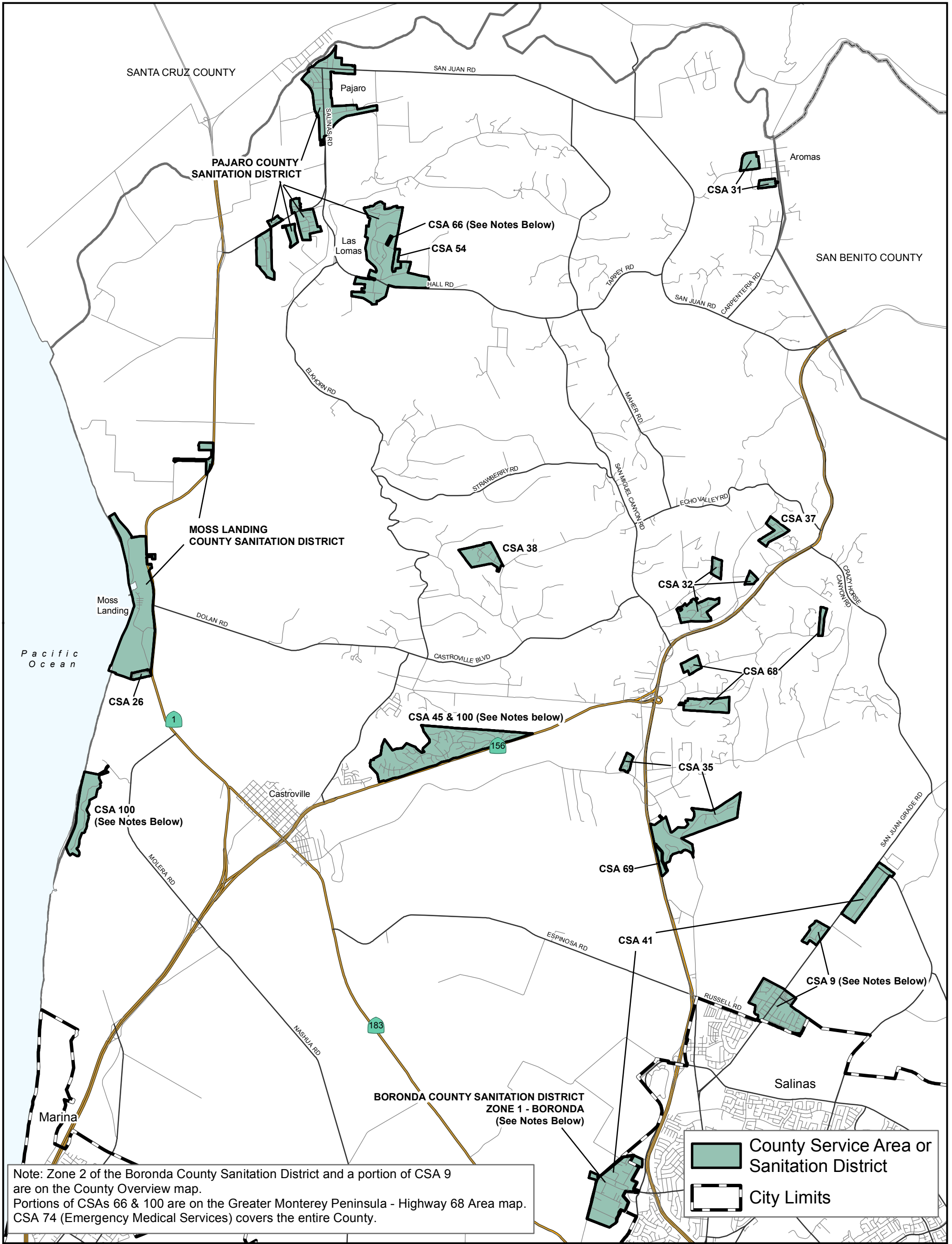
LOCAL AGENCY FORMATION COMMISSION

P.O. Box 1369 132 W. Gabilan St., Suite 102
Salinas, CA 93902 Salinas, CA 93901
Telephone (831) 754-5838 FAX (831) 754-5831


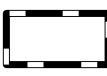


**OVERVIEW OF
COUNTY SERVICE AREAS (CSAs) &
COUNTY SANITATION DISTRICTS**

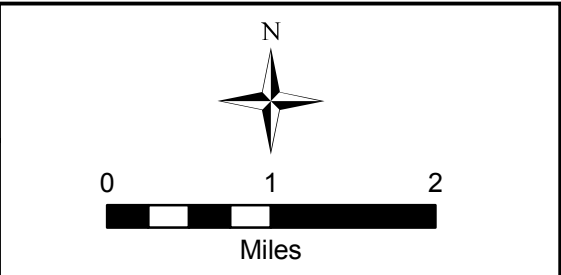
(Map Produced on 2/6/13)



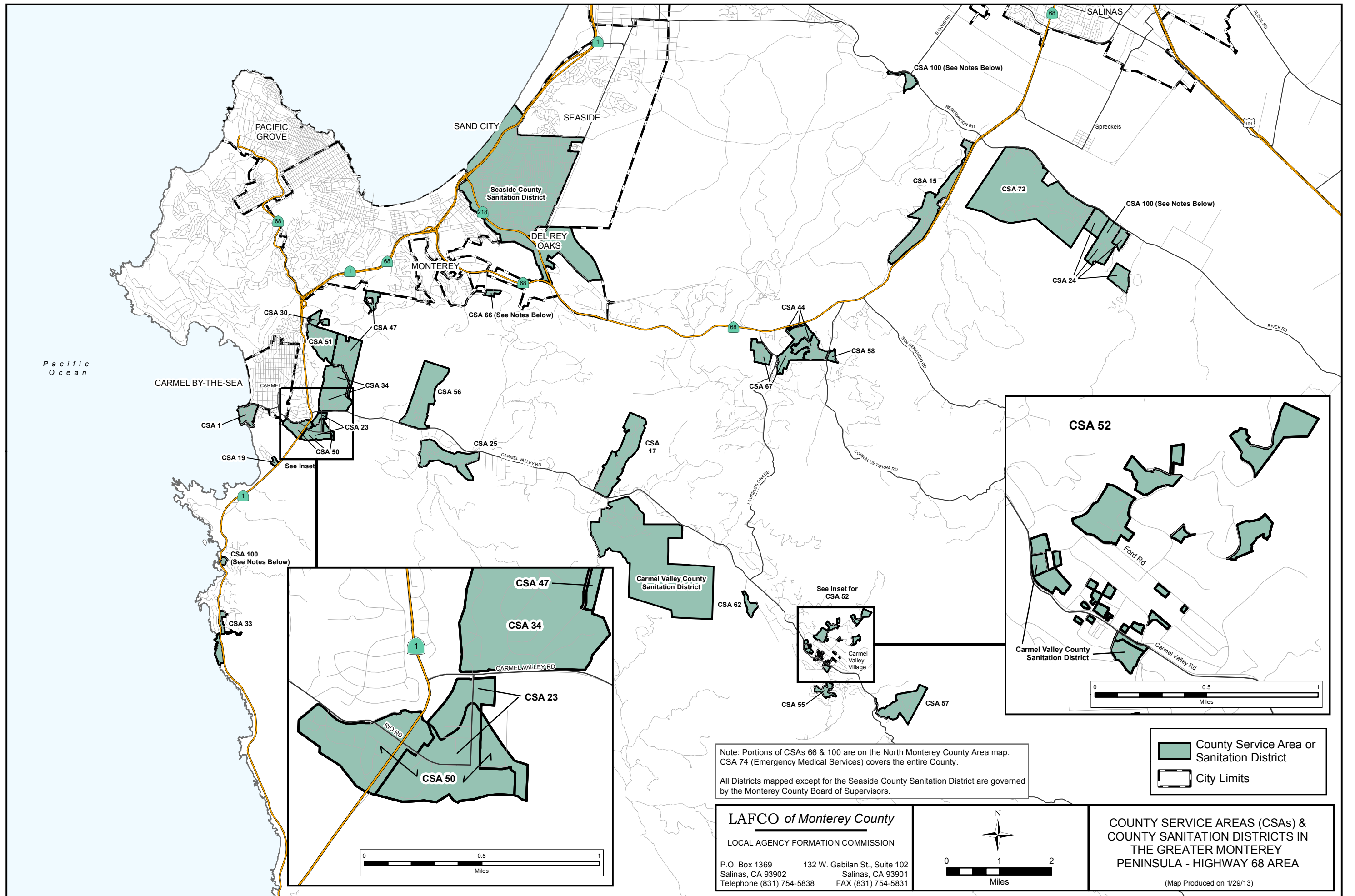
Note: Zone 2 of the Boronda County Sanitation District and a portion of CSA 9 are on the County Overview map.
 Portions of CSAs 66 & 100 are on the Greater Monterey Peninsula - Highway 68 Area map.
 CSA 74 (Emergency Medical Services) covers the entire County.

 County Service Area or Sanitation District
 City Limits

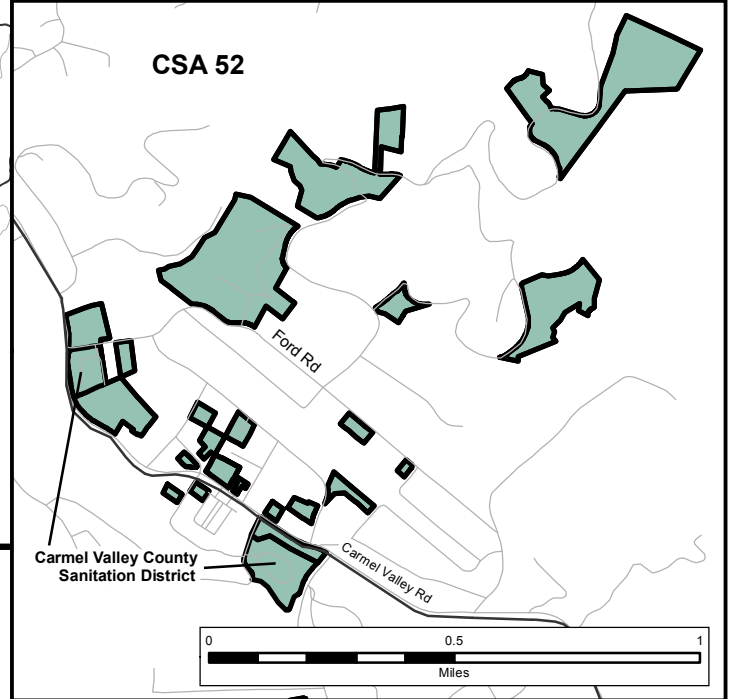
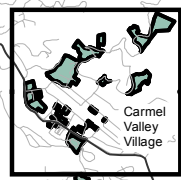
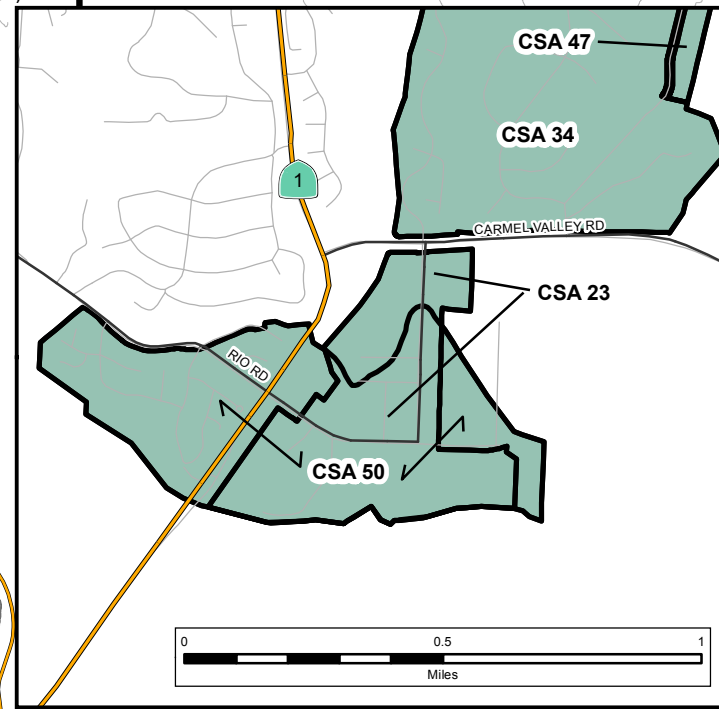
LAFCO of Monterey County
 LOCAL AGENCY FORMATION COMMISSION
 P.O. Box 1369 132 W. Gabilan St., Suite 102
 Salinas, CA 93902 Salinas, CA 93901
 Telephone (831) 754-5838 FAX (831) 754-5831



COUNTY SERVICE AREAS (CSAs) & COUNTY SANITATION DISTRICTS IN NORTH MONTEREY COUNTY
 (Map Produced on 2/6/13)



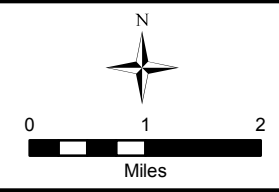
Pacific Ocean



Note: Portions of CSAs 66 & 100 are on the North Monterey County Area map. CSA 74 (Emergency Medical Services) covers the entire County.
 All Districts mapped except for the Seaside County Sanitation District are governed by the Monterey County Board of Supervisors.

County Service Area or Sanitation District
 City Limits

LAFCO of Monterey County
 LOCAL AGENCY FORMATION COMMISSION
 P.O. Box 1369 Salinas, CA 93902 Telephone (831) 754-5838
 132 W. Gabilan St., Suite 102 Salinas, CA 93901 FAX (831) 754-5831



COUNTY SERVICE AREAS (CSAs) & COUNTY SANITATION DISTRICTS IN THE GREATER MONTEREY PENINSULA - HIGHWAY 68 AREA
 (Map Produced on 1/29/13)